

WATER OVER THE DAM

The year 2001, regarded by many as the first year in the new millennium, is now water over the dam. On January 2, 2002, however, we can celebrate our relations with Canada. Since January 2, 1929, Canada and the United States have both honored their original agreement to preserve Niagara Falls, really two waterfalls that flow between southeastern Ontario and western New York State. The Horseshoe, or Canadian Falls are 158 feet high, and the American Falls are 167 feet high. Goat Island separates the two. In 1848, the Falls briefly dried up for the first time in recorded history. Strong winds formed an ice jam on Lake Erie near Buffalo, New York, and blocked the flow of water along Niagara River. Local townspeople were able to explore the riverbed, turning up artifacts from the War of 1812, among other things.



Nature will have her course.

TIP OF THE WEEK

Fruit juices diluted with water or seltzer help remedy a hangover.

BLUE-CHEESE DIP

- 4 ounces cream cheese
- 1/4 cup minced parsley
- 2 tablespoons margarine
- 2 tablespoons chopped fresh basil
- 2 teaspoons minced fresh rosemary
- 1 clove garlic, minced
- 1 teaspoon chopped fresh thyme
- 2 teaspoons Worcestershire sauce
- 1 tablespoon lemon juice
- 1-1/2 ounces blue cheese

Combine all ingredients, except blue cheese, and process or whip until smooth, stirring in the blue cheese at the end. Refrigerate and serve on crackers, or add to a baked potato.

Makes 1 cup



THE OLD FARMER'S WEATHER PROVERBS

In January if the sun appear, March and April will pay full dear

Fog in January brings a wet spring.



The 2002 Old Farmer's Almanac makes every day special. Spread holiday cheer all through the year with a subscription to The Old Farmer's Almanac. Call 800-729-9265, ext 220 or visit www.almanac.com.

Four States Livestock Monday Sale

Hagerstown, Md.
Report Supplied By Auction
December 26, 2001

SLAUGHTER COWS: 125 HEAD, STEADY TO 2.00 HIGHER. BREAKERS 41.00-46.00, BONERS 39.00-44.00, LEAN 37.00-41.00, THIN 37.00 DOWN.
BULLS: YG#2 1932 LBS. AT 53.50.
FED STEERS: 20 HEAD, NO PRIME OFFERED. FEW CHOICE 1200-1450 LBS. 64.50-65.25; OVER 1450 LBS. 61.00-64.00; LOW CHOICE 1100-1300 LBS. 61.00-63.00.
FED HEIFERS: 12 HEAD. HIGH CHOICE 2-4 1200-1400 LBS. 64.50-66.25, LOW CHOICE 1100-1400 LBS. 58.00-63.00; CALVES 345 HEAD. INCLUDES 27 HOLSTEIN HEIFERS. GOOD SLAUGHTER 85-120 LBS. 48.00-60.00; HOLSTEIN BULLS RETURNED TO FARM 5.00 LOWER. #1 95-120 LBS. 120.00-142.00, 84-94 LBS. 100.00-132.00; #2 95-120 LBS. 102.00-125.00, 80-94 LBS. 70.00-100.00.
HOLSTEIN HEIFERS, GOOD DEMAND! #1 90-110 LBS. 500.00-550.00, 1 120 LB. AT 480.00; #2 80-100 LBS. 200.00-450.00, 65-80 LBS. 100.00-170.00. BEEF X BULLS AND HEIFERS #1 90-115 LBS. 97.00-135.00, 1 70 LB. AT 120.00.
BUTCHER HOGS: 14 HEAD. US#1-2 215-260 LBS. 34.50-35.25, FEW 285-385 LBS. TO 37.00; 1 430 LB. AT 27.50.
SOWS: 24 HEAD. 300-400 LBS. FEW TO 32.00, 400-500 LBS. TO 23.00, 500-700 LBS. 24.00-26.50.
STOCK CATTLE: 58 HEAD. STEERS, FEW OFFERED.
HEIFERS: 300-500 LBS. 65.00-70.00, 500-600 LBS. 55.00-62.00, 1 840 LBS. AT 63.00.
BULLS: 200-300 LBS. 84.00-98.00, FEW 400-600 LBS. 72.00-75.00, HOLSTEINS 200-300 LBS. 64.00-77.00; DAIRY REPLACEMENTS 9 HEAD. LARGE SPRINGERS 1275.00-1550.00, 1 OLDER COW AT 1000.00.
LAMBS: 21 HEAD. FEW CHOICE

70-75% lean over 1200 lbs 43.00-44.50. Breakers 70-80% lean over 1100 lbs 42.00-43.50, low dressing 39.00-42.00. Boners 80-85% lean over 1050 lbs 39.00-42.50, low dressing 38.00-39.00. Lean 85-90% lean over 850 lbs 36.50-40.00, low dressing 30.00-36.50.
Barrows and gilts at South St. Paul and Sioux Falls terminal markets sold steady on Wednesday, 220-270 lbs 47-50% lean barrows and gilts sold from 32.50-34.00. The National direct trade prices are based on 185 lbs hog carcass with 0.9-1.1 inch back fat and 6 inch square loin/2.0 inch depth plant delivered. National direct trade closed steady with prices ranging 39.50-49.12, weighted average price 45.36. Iowa-So. Minnesota direct trade trended steady to 50 lower with prices ranging from 39.50-49.12, with weighted average price 45.81. The Western Cornbelt closed mostly 50 lower at 39.50-49.12, weighted average price 45.62. The Eastern Cornbelt trended steady firm with prices ranging 40.55-49.01, an average price 44.95. Hog slaughter under federal inspection estimate on Wednesday was estimated at 368,000 head compared to 384,000 a week ago and 384,000 a year ago. Week to date totals through Wednesday 471,000 head compared to a week ago 1,151,000 head and a year ago actual slaughtered 681,000 head.
CME Future Closes for Lean Hogs: February 55.47, down 30; April 58.8, up 52; May 63.95, unchanged.
Slaughter lambs were steady at So. St. Paul, MN. Shorn: Choice, end Prime 2-3, 110-140 lbs 58.00-60.00; Woolled: Choice, end Prime 2-3, 110-140 lbs 56.00-58.00.
Sheep and lamb slaughter under federal inspection estimate on Wednesday was estimated at 12,000 head compared to 13,000 a week ago and 14,000 a year ago. Week to date slaughter for sheep through Wednesday 16,000 head compared to a week ago 39,000 head and a year ago same day actual slaughtered 23,000 head.
Slaughter cows at South St. Paul traded steady to firm. Premium White

Midwest Daily Livestock Summary

Amarillo, Texas
December 26, 2001
Report Supplied By USDA
Five area direct slaughter cattle trade slow, not enough for market test. STEERS: LIVE BASIS: over 80% Choice 63.50-65.00, weighted average 64.21. DRESSED BASIS: 35-65% Choice 99.00, weighted average price 99.00. SLAUGHTER HEIFERS: LIVE BASIS: Over 80% Choice 62.50-65.00, weighted average price 63.75. DRESSED BASIS: over 80% Choice 102.00, weighted average price 102.00; 65-80% Choice 102.00, weighted average 102.00; 35-65% Choice 100.00, weighted average price 100.00.
At the So. St. Paul terminal market, slaughter steers and heifers steady to firm; Sioux Falls 1.00-2.00 higher, instances 2.50 higher. Steers: Choice 2-3 1165-1435 lbs 63.50-66.00. Heifers: Choice 2-3 1165-1415 lbs 63.00-66.00.
The estimated daily cattle slaughter under federal inspection for Wednesday was estimated at 128,000 head compared to 130,000 a week ago and 117,000 a year ago. Week to date totals through Wednesday 135,000 head compared to 357,000 last week and 227,000 a year ago. CME Futures Closes for Live Cattle: December 66.32, up 15; February 70.75, up 27; April 73.72, up 25.
Slaughter cows at South St. Paul traded steady to firm. Premium White

Livestock Cooperative Auction Market Of North Jersey
Hackettstown, N.J.
Report Supplied by Auction
Tuesday, December 26, 2001
CALVES .02-4.45.
COWS .18-.44.
EASY COWS .26-.42½.
FEEDERS 300-600 LBS .44-.86.
HEIFERS .25-.62
BULLS 39-.59

STEERS .23-.64.
HOGS .22.
ROASTING PIGS EACH, NONE.
BOARS, NONE.
SOWS, NONE.
SHEEP .29-.65.
LAMBS EA. 45.00-111.00.
LAMBS PER LB. .46-1.26.
GOATS EA. 55.00-132.50.
KIDS EA. 20.00-95.00 EA.
HIDES EA. 20.00-24.00.
597 TOTAL HEAD.

Leave the Stinky Stuff to US!
MID-ATLANTIC AGRISYSTEMS

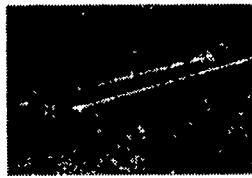
PUMPS & MORE



Houle 32' Lagoon Pump
As-is condition
073-mau



Micro Pivot from Hydrus



Houle 3" Transfer Pump 12'
076-mau



AgriChopper Round Bale Chopper
All hydr. controls.
(Boy sold separately) 064-mau

PUMPS

- 32' Lagoon Super Pump - Rental
- (2) Irrigation Pumps - Rental
- 42' Multi-Purpose AgiPump - New
- 8'-12' Tri Model AgiPump - Rental
- Maxi Pump - Rental

TANKS & SPREADERS

- B-Model Mack w/4000(?) Gallon Tank (030-mau)
- Barron & Brothers 20' Litter Spreader (032-mau)

TANKS & SPREADERS



Balzer 4800 gallon Topfill Truck Tank
Hyd. drive, Hyd. top lid, Exc. shape, 2 yrs old 070-mau
\$8,500



(2) '98 Houle 5250, '97 Houle 4800, '96 Houle 5350
059-mau



2500 gal. Vacuum Tank For Truck w/o Vacuum Pump
071-mau



Better Built 1500 gal. Truck Tank
Top fill 074-mau
\$750

1998 Ford F250
Blue, 5 4L Triton, 78K, 4-Wheel Drive, New Brakes, New Tires, Trailer Hitch 069-mau
\$15,500

SEE US AT AT THE KEYSTONE FARM SHOW
JAN. 8TH, 9TH & 10TH

BOOTH #259

Visit us for more information and prices more equipment online at www.midatlanticagri.com

Proudly Featuring: **HOULE** Top Volume Dealer in the United States 2000
Mid-Atlantic agrisystems
www.midatlanticagri.com

Cadman POWER EQUIPMENT BALZER INC.
LIQUID WASTE EQUIPMENT SPECIALISTS
800-222-2948 • 717-529-2782
4019 Ashville Rd. • Quarryville, PA 17566

INVENTORY REDUCTION SALE
\$4,500 Until Jan. 10, 2002

PROCESS SILAGE
For Increased Nutrition
Install a Silage Mill Conversion Kit on Your Used Harvester

Silage Mill Conversion Kit for John Deere, New Holland, Gehl Harvesters (Patent #6,166,529)

- Wear points lined with stainless steel
- Total weight 880 lbs
- 8 1/2" processing rolls
- Designed for tractors up to 250 hp
- No welding needed on the JD units
- Installation manual included
- Can be installed in one day
- Very affordable

Georgetown Manufacturing, LLC
Christiana, PA
610-593-2753