

**Eighty-Four Livestock Auction**

Eighty-Four, Pa.  
Monday, December 17, 2001  
Report Supplied By USDA  
CATTLE 285...(PDA)...Compared with last week's sale...cows steady to 1.50 higher.  
STEERS: few Standard 1-2 43.00-44.50.  
HOLSTEIN STEERS: couple Standard 1-2 43.00 & 46.00.  
HEIFERS: few Standard 1-2 46.00-50.00.  
COWS: Breakers 75-80% lean, 37.50-41.50, Boners 80-85% lean 35.00-38.50, Lean 85-90% lean 30.50-35.00. Shells 30.00 and down.  
BULLS: one Yield Grade 1 1860 lbs, 51.00, Yield Grade 2 1080-1965 lbs 38.50-47.50.

FEEDER CATTLE: STEERS: Medium and Large 1 325-475 lbs 75.00-91.00, 515-650 lbs 70.00-84.00, Medium and Large 2 385-500 lbs 55.00-65.00, 510-675 lbs 50.00-66.50; HEIFERS: Medium and Large 1 320-500 lbs 68.00-82.00, 505-630 lbs 67.00-74.00, Medium and Large 2 310-500 lbs 47.00-65.00, 505-660 lbs 43.00-60.00; BULLS: Medium and Large 1 320-485 lbs 73.00-82.50, 530-625 lbs 69.50-75.00, few Medium and Large 2 345-640 lbs 50.00-69.00.  
CALVES 165...(All calves sold per cwt). VEALERS: Standard and Good 90-110 lbs 45.00-65.00, 70-85 lbs 36.00-60.00, Utility 50-95 lbs 10.00-31.00.  
FARM CALVES: Holstein bulls steady to 10.00 higher...No 1 Holstein bulls 90-125 lbs 97.50-135.00, No 2 75-115 lbs 67.50-100.00; No 1 Holstein heifers 80-120 lbs 41.00-52.00, No 2 75-95 lbs 15.00-35.00.  
Beef type bulls and heifers 75-115 lbs 137.50-182.50, 150-295 lbs 66.00-93.00.  
HOGS 24...BARROWS AND GILTS: 45-50% lean 210-245 lbs 38.00-43.00, 40-45% lean 210-345 lbs 29.50-35.00.  
SOWS: 1-3 345-470 lbs 26.00-36.00, one 625 lbs 26.00.  
BOARS: one 320 lbs 10.00.  
FEEDER PIGS 0...NO MARKET TEST!  
SHEEP 254...New Crop lambs 30.00 lower. SLAUGHTER LAMBS: High Choice and Prime 100-135 lbs 58.00-69.00, Choice 55-70 lbs 80.00-96.00, few to 120.00, 80-95 lbs 70.00-85.00, one 100.00, Good and Choice 55-75 lbs 60.00-79.00.  
FEEDER LAMBS: Choice 35-50 lbs 60.00-75.00.  
SLAUGHTER SHEEP: 25.00-37.00, few Yearlings 41.00-45.00.

GOATS 50...(All sold by the head). Large Billies 87.00-125.00, Medium 43.00-62.50, Large Nannies and Wethers 41.00-67.00, one 75.00, Medium Nannies 25.00-46.00, Large Kids 20.00-37.50.

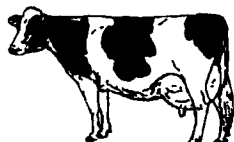
85.00-120.00; #2 95-120 LBS. 97.00-120.00, 80-94 LBS. 65.00-85.00; HOLSTEIN HEIFERS 6 HEAD. #1 95-110 LBS. 475.00-530.00, #2 80-100 LBS. 200.00-400.00; BEEF X HEIFERS 70-110 LBS. 97.00-130.00.  
BUTCHER HOGS: 38 HEAD. #1 AND 2 220-260 LBS. 33.00-34.75, 270-300 LBS. 34.00-36.00, 300-350 LBS. 27.00-34.00, 350-425 LBS. 30.00-35.00; 1 475 LBS. AT 31.50.  
SOWS: 12 HEAD. 1 500 LBS. AT 34.00; THIN 300-400 LBS. 22.00-23.00.  
BOARS: 400-650 LBS. 12.00-13.50.  
STOCK CATTLE: FEW OFFERED.  
STEERS: 1 525 LBS. AT 73.00.  
HEIFERS: 350-500 LBS. 31.00-75.00.  
BULLS: NONE.  
LAMBS: 16 HEAD. HIGH CHOICE TO PRIME 115-130 LBS. 64.00-65.50, 1 LOT 137 LBS. AT 58.50, GOOD TO CHOICE 80-95 LBS. 68.00-78.00.  
GOATS: MED. TO LARGE 45.00-70.00.  
PIGS AND SHOATS: BY THE HEAD, 1 LOT 50 LBS. AT 26.00; BY THE LB. 14 HEAD 110-150 LBS. 44.00-45.00, STOCK BOAR 1 378 LBS. AT 14.50.  
NO SALE MON., DEC. 24. SALE AS USUAL MON., DEC. 31.

**Four States Livestock Monday Sale**

Hagerstown, Md.  
Report Supplied By Auction  
December 17, 2001  
SLAUGHTER COWS: 59 HEAD, ACTIVE BIDDING 1.00-3.00 HIGHER. BREAKERS 40.00-43.25, BONERS 38.00-41.50, LEAN 35.00-38.50, THIN 35.00 DOWN.  
BULLS: 3 HEAD. LOW DRESSING YG#1 49.00-50.25.  
FED STEERS: HIGH CHOICE 1400-1550 LBS. 64.00-66.00, SELECT 1000-1300 LBS. 55.00-58.00.  
FED HEIFERS: LOW CHOICE 1050-1200 LBS. 59.00-60.00, 1 CHOICE 4 1000 LBS. AT 60.00, LOW CHOICE HOLSTEINS 1525 LBS. AT 48.25.  
CALVES: 102 HEAD, GOOD SLAUGHTER. 80-100 LBS. 40.00-60.00; HOLSTEIN BULLS RETURNING TO FARM 5.00-10.00 HIGHER. #1 95-120 LBS. 122.00-137.00, 85-94 LBS.

**Ulti-Mat™ All Rubber Cow Mattress Installation**

Continuous Cow Comfort - **THE ONLY** All Rubber Mattress that recovers to original shape after cow movement.



**Absolutely The Ultimate in Cow Comfort**



- Designed by farmers
- Inert - does not promote fungus or bacterial growth
- 3" nominal thickness
- Water and acid resistant polyurethane binder
- Comfort doesn't change after 4 years in barn and running
- Mattress pads are guaranteed provided the top cover doesn't have holes in it with the original installation

★ Call For References ★

Installation & Financing Available

**THANK YOU**

To Penn State University for installing the Ulti-Mat™ Cow Mattresses in their Tie Stall Barn.

**ZARTMAN FARMS**

820 Hilltop Rd., Ephrata, PA 17522  
717-733-1050  
E-mail: zartmanfarms@dejazzd.com



**Seasons Greetings**

We appreciate your business and wish you God's richest blessings for the year 2002 ~ from all of us at

Henry K. Fisher & Sons, Inc.



Sandblasting, Spray Painting  
687 Hartman Station Rd.  
Lancaster, PA 17601  
(717) 393-6530

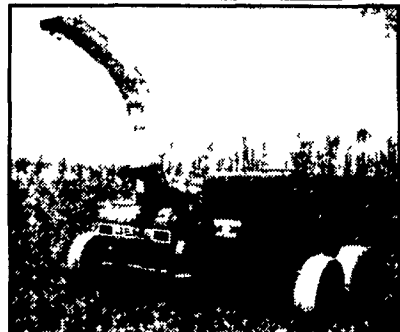
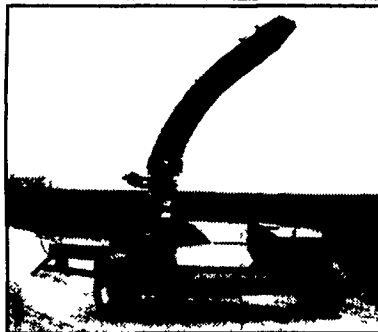
**Float - a - Cow**  
LEE-MAR FARM  
2724 Conestoga Creek Rd.  
Morgantown, PA  
Give Your Down Cow Her Best Chance  
610-286-9052  
Sales & Rentals

**INVENTORY REDUCTION SALE**

\$4,500 Until Jan. 10, 2002

**PROCESS SILAGE**

For Increased Nutrition  
Install a Silage Mill Conversion Kit on Your Used Harvester



Silage Mill Conversion Kit for John Deere, New Holland, Gehl Harvesters (Patent #6,166,529)

- Wear points lined with stainless steel
- Total weight 880 lbs
- 8 1/2" processing rolls.
- Designed for tractors up to 250 hp
- No welding needed on the JD units.
- Installation manual included
- Can be installed in one day
- Very affordable



Georgetown Manufacturing, LLC  
Christiana, PA  
610-593-2753

**IRRIGATION PERFECTION**



**HYDRUS MICRO PIVOT**

Mid-Atlantic AgrSystems is THE place to get a look at the Micro-Pivot. This irrigation system is perfect for separated liquid, hog manure or any situation where a small, efficient, irrigation system is needed. All units are lightweight, easily towed from field to field, and operate at peak performance in fields that range from five acres to seventy acres. We'll be happy to fill you in on more details regarding the Micro Pivot - just swing by and see us.

**Mid-Atlantic is #1 in parts and service for liquid waste handling on your farm.**

- Fully-stocked parts and service department
- Trained, experienced sales and service staff
- New and used equipment sales
- Long and short-term rental equipment

**SAMPLE GUR PROOWNEDS**



Houle 3" Transfer Pump 12'



Houle 32' Lagoon Pump As-Is condition



AgriChopper Round Bale Chopper All hydr controls.



(2) '98 Houle 5250, '97 Houle 4800, '96 Houle 5350



1998 Ford F250 Blue, 5 4L Triton, 78K, 4-Wheel Drive, New Brakes & Tires, Trailer Hitch \$15,000



Better Built 1500 gal. Truck Tank Top fill \$750

Proudly Featuring: HOULE In the United States 2000

Cadman POWER EQUIPMENT RALZER INC. HUSBY

MID ATLANTIC agrisystems

LIQUID WASTE EQUIPMENT SPECIALISTS

800-222-2948 • 717-529-2782

4019 Ashville Rd. • Quarryville, PA 17566

www.midatlanticagri.com