

Westminster Livestock

Hagerstown, Md.
Report Supplied By Auction
December 11, 2001

85 HEAD, STEADY TO 1.00 LOWER. BREAKERS 38.00-41.50, BONERS 35.00-38.50, LEAN 33.00-36.00, THIN 33.00 DOWN.

BULLS: 10 HEAD. YG#1 1100-1600 LBS. 52.00-54.50, YG#2 1300-2400 LBS. 45.00-48.50, LOW DRESSING 44.00-45.00.

FED STEERS: NO BEEF BREEDS OFFERED. HIGH CHOICE HOLSTEINS 1500 LBS. AT 57.75, CHOICE 1300-1600 LBS. 54.00-56.50.

FED HEIFERS: 1.00-2.00 HIGHER. HIGH CHOICE TO PRIME 1200-1400 LBS. 66.00-68.00, CHOICE 1100-1300 LBS. 63.00-65.00, LOW CHOICE 900-1100 LBS. 58.00-60.00.

CALVES 163 HEAD. 1 LOW CHOICE 296 LBS. AT 77.00, GOOD 80-110 LBS. 50.00-60.00; HOLSTEIN BULLS RETURNING TO FARM 15.00-20.00 HIGHER. #1 94-120 LBS. 115.00-132.00, 85-92 LBS. 80.00-107.00; 6 HEAD 130-154 LBS. 92.00-105.00; #2 90-120 LBS. 90.00-115.00, 80-90 LBS. 62.00-80.00; HOLSTEIN HEIFERS NO #1'S. #2 90-115 LBS. 300.00-430.00, 65-85 LBS. 150.00-350.00.

BUTCHER HOGS: 22 HEAD, ALL SOLD TO COUNTRY BUTCHERS. #1 AND 2 200-260 LBS. 34.00-38.50, 260-290 LBS. 33.00-38.50, 300-400 LBS. 32.00-39.75.

SOWS: 15 HEAD, STEADY. 300-400 LBS. 23.00-25.00, 400-600 LBS. 24.00-26.75, 600-750 LBS. TO 24.25.

BOARS: 4 HEAD. 375-675 LBS. 14.00.

STOCK CATTLE: 167 HEAD, PRICES HIGHER. STEERS MED. AND LARGE FRAME 300-500 LBS. 83.00-100.00, 500-700 LBS. 75.00-84.00, 700-950 LBS. 57.00-68.50, 1000-1150 LBS. 60.00-66.00.

HEIFERS; MED. AND LARGE FRAME 2.00-5.00 HIGHER. 300-500 LBS. 72.00-86.00, 500-600 LBS. 68.00-78.00, 600-700 LBS. 62.00-68.00; 5 HEAD 1000-1150 LBS. 60.00-72.00.

BULLS: 300-500 LBS. 80.00-86.00, 500-700 LBS. 62.00-78.00, 800-1000 LBS. 48.00-53.00.

SHEEP: 12 HEAD 36.00-48.00

LAMBS: 123 HEAD, STEADY PRICES. CHOICE TO PRIME 100-120 LBS. 57.00-66.00, 125-155 LBS. 52.00-60.00, 80-100 LBS. 60.00-72.00, 50-80 LBS. 67.00-86.00.

GOATS: 113 HEAD. LARGE BIL-

LIES AND WETHERS 85.00-130.00, MEDIUM 40.00-75.00, NANNIES 45.00-85.00, SMALL FELSHY 35.00-55.00.

PIGS AND SHOATS: 99 HEAD. BY THE HEAD, 20-30 LBS. 19.00-23.00; BY THE LB. 40-60 LBS. 56.00-61.00, 70-110 LBS. 49.00-60.00; STOCK BOARS 5 HEAD 230-350 LBS. 18.00-24.00.

Leesport Livestock Auction

Leesport, Pa.
December 12, 2001
Report Supplied By USDA

CATTLE 272...(PDA)...(Supply included 100 steers and heifers, 102 cows, 13 bulls and 57 feeder cattle)...Compared with last week's sale...steers moderate supply of good beef type steers.

STEERS: Choice 2-3 1155-1475 lbs 64.00-66.75, one 68.25, Select 1-3 59.00-64.00, one Standard 1-2 54.00.

HOLSTEIN STEERS: Choice 2-3 1200-1540 lbs 52.25-55.25, return to feed 53.50-60.00, Select 1-2 49.75-52.50.

HEIFERS: Choice 2-4 1110-1360 lbs 60.00-64.75, heiferettes 44.25-54.25, Select 1-3 54.50-59.00, couple Standard 1-2 50.50 & 53.00.

COWS: Breakers 75-80% lean 37.00-45.00, Boners 80-85% lean 34.50-40.75, Lean 85-90% lean 31.25-38.25. Shells 32.00 and down.

BULLOCKS: one Choice 2-3 62.50, couple Select 1-3 49.00 & 52.00.

BULLS: Yield Grade 1 1495-1645 lbs 50.00-56.00, one 62.25, Yield Grade 2 1465 & 2780 lbs 45.75-51.50.

FEEDER CATTLE: STEERS: one 360 lbs 74.00, Medium 2 265-440 lbs 63.00-67.00, Medium and Large 2 555-960 lbs 46.00-70.00, Large 3 245-435 lbs Holsteins 51.00-57.50, 630-985 lbs 40.50-64.00; HEIFERS: Medium and Large 2 475-920 lbs 46.50-73.00; BULLS: Large 3 535-680 lbs Holsteins 44.00-48.50.

CALVES 177...VEALERS: Standard and Good 70-115 lbs 40.00-60.00, Utility 50-90 lbs 10.00-30.00. FARM CALVES: Holstein bulls and Holstein heifers mostly steady...No 1 Holstein bulls 90-120 lbs 105.00-127.50, No 2 80-120 lbs 60.00-117.50; one No 1 Holstein heifers 110 lbs 440.00, No 2 70-115 lbs 195.00-370.00.

Few beef type bulls and heifers 90-100 lbs 105.00-120.00.

HOGS 28...BARROWS AND GILTS: 40-45% lean 250-305 lbs 28.50-31.00.

SOWS: one 1-3 445 lbs 24.75, one 570 lbs 27.00.

BOARS: one 730 lbs 12.50.

FEEDER PIGS 17... 1-3 60 lbs 77.50. — per head.

SHEEP 65...SLAUGHTER LAMBS: Choice 20-40 lbs 80.00-160.00, 50-80 lbs 76.00-110.00, 90-130 lbs 51.00-67.00.

SLAUGHTER SHEEP: 17.00-34.00, Yearlings 38.00-50.00.

GOATS 25...(All sold by the head). Large Billies 80.00-110.00, Medium 56.00-87.50, couple Medium 60.00 & 61.00, Large Kids 30.00-57.00.

Carlisle Livestock

Carlisle, Pa.
Report Supplied by Auction
Tuesday, December 11, 2001

SLAUGHTER CATTLE: COWS BREAKERS MOSTLY 38.00-40.00, BONERS 36.00-40.00, LEAN 32.00-39.75; BULLS 1545 LBS. 51.00.

FEEDER CATTLE: STEERS, HOLSTEINS AND DAIRY TYPES 600-850 LBS. 52.00-69.00; HEIFERS 500-675 LBS. 60.00-65.00, HOLSTEINS AND DAIRY TYPES 60.00; CALVES RETURNING TO THE FARM, HOLSTEIN BULLS #1 80-130 LBS. 80.00-125.00, HOLSTEIN HEIFERS #1 90-125 LBS. 390.00-510.00, #2 75-130 LBS. 100.00-330.00; BEEF X BULLS 90-120 LBS. 84.00-110.00, BEEF X HEIFERS 80-90 LBS. 100.00.

SWINE: HOGS US#1-3 220-270 LBS. 35.00-38.00, 280-360 LBS. 32.50-38.00; US#2-4 30.00-32.00; SOWS US#1-3 350-550 LBS. 27.00-38.00; FEEDER PIGS BY THE LB. 15-25 LBS. 95.00-150.00, 25-40 LBS. 84.00-130.00.

GOATS: BY THE HEAD, LARGE NANNIES AND BILLIES 50.00-126.00, FANCY KIDS 62.50-72.50, FLESHY KIDS 47.00-61.00, SMALL AND THIN 32.00-46.00.

LAMBS: GOOD 45-60 LBS. 107.00-150.00, 70-150 LBS. 63.00-88.00.

SHEEP: ALL WEIGHTS 30.00-42.50.

SALE EVERY TUES., 5 P.M. FOR RABBITS, POULTRY AND EGGS; 6:30 P.M. FOR LIVESTOCK STARTING WITH CALVES; SPECIAL FAT CATTLE SALE TUES., DEC. 18; SPECIAL FEEDER CATTLE SALE TUES., DEC. 18 13 BEEF X BROOD COWS MOST EXPECTING SECOND TO FIFTH CALF. ALLCK TO ANGUS BULL, 4 YRS. OLD AND WILL BE SOLD FIRST. ALL COWS VET - CHECKED. RED CARPET TACK AND HORSE SALE FRI., JAN 18 STARTING AT 7 P.M. WITH TACK. RECEIVING 5 P.M.

SMALL ANIMAL SALE
December 11, 2001
RABBITS 2.50-6.50.

Five-Area Weekly Average Direct Slaughter Cattle
St Joseph, Mo., Dec. 10, 2001— USDA Market News Service
Sales in Texas/Oklahoma; Kansas; Nebraska; Colorado; and Iowa/Minnesota Feedlots for
Week Ending Sunday, December 9, 2001

Confirmed Sales: 267,550 Week Ago: 131,417

LIVE BASIS SALES:
SLAUGHTER STEERS

	Head Count	Weight Range	Price Range	Avg. Weight	Avg. Price
Over 80% Choice	3,217	900-1,600	63 00-66 00	1,382	65 04
65-80% Choice	8,263	819-1,600	63 50-67 00	1,335	65 43
35-65% Choice	75,882	860-1,600	60 00-66 50	1,381	65 35
1-35% Choice	5,358	925-1,600	63 00-66 25	1,284	65 37

SLAUGHTER HEIFERS

Over 80% Choice	2,918	915-1,525	64 00-66 50	1,279	65 01
65-80% Choice	7,587	900-1,525	63 00-66 75	1,212	65 53
35-65% Choice	70,375	850-1,500	63 00-66 50	1,147	65 52
1-35% Choice	3,546	1,000-1,410	65 00-66 00	1,148	65 44

DRESSED BASIS SALES:
SLAUGHTER STEERS

Over 80% Choice	3,288	593-1,057	101 00-106 00	861	103 86
65-80% Choice	10,783	475-1,041	101 00-106 00	849	104 41
35-65% Choice	24,612	523-1,072	100 50-106 00	837	103 98
1-35% Choice	841	425-1,038	101.50-105 00	831	103 52

SLAUGHTER HEIFERS:

Over 80% Choice	606	626-1,032	104 00-106 00	780	104 94
65-80% Choice	7,764	493- 995	102.00-106 00	775	104 82
35-65% Choice	15,841	425-1,000	100 50-106 00	750	104 43
1-35% Choice					

Weekly Accumulated Weighted Averages (Beef Breeds)

	Head Count	Avg. Weight	Avg. Price
Live Steer	92,720	1,289 2	65 35
Live Heifer	84,426	1,157 0	65 50
Dressed Steer	39,498	841 9	104 08
Dressed Heifer	24,214	765 8	104 57

Week Ago Weighted Averages:

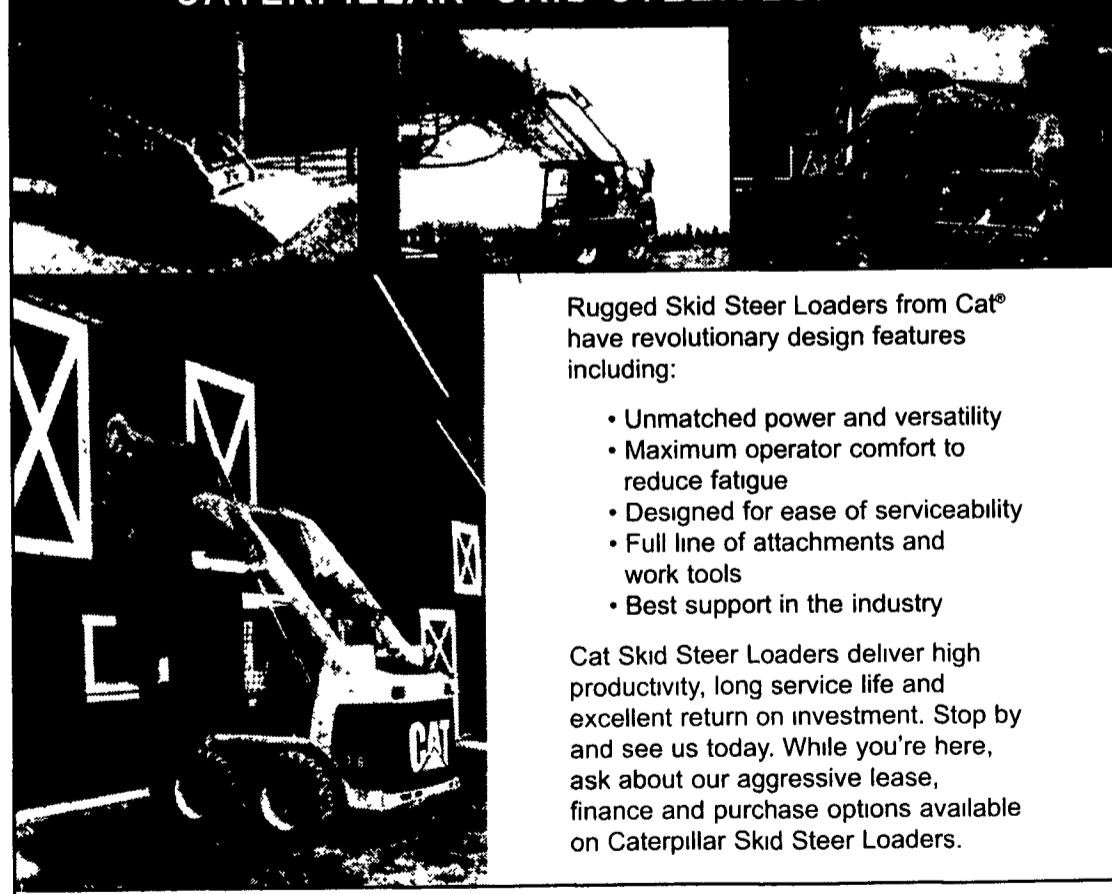
Live Steer	34,908	1,306 1	65 52
Live Heifer	28,724	1,189 7	65 67
Dressed Steer	26,847	842.0	105 28
Dressed Heifer	16,748	765 8	105 42

BUNNIES 1.00-2.25.
CHICKENS .50-4.75.
BANTIES .60-1.85.
PIGEONS 1.50-2.00.
PHEASANTS 3.75-5.25.
GUINEAS PIGS .60-1.35.
DUCKS 1.75-5.50.
GEESE 5.00.
TURKEYS 6.00-7.75.
ALL ANIMALS SOLD BY THE HEAD. SALE STARTS 5 P.M.

Morrison's Cove Livestock
Martinsburg, Pa.
Report Supplied by Auction
Monday, December 10, 2001

CATTLE: 102 HEAD.
STEERS: CHOICE 65.00-67.75, GOOD 60.00-64.75.
HEIFERS: CHOICE 64.50-67.50, GOOD 59.00-63.00.
COWS: UTILITY AND COMMERCIAL 35.50-42.00, CANNER AND LOW CUTTER 25.00-35.00.
BULLOCKS: GOOD & CHOICE 48.00-55.00.
BULLS: 44.00-57.00.
FEEDER CATTLE: STEERS AND BULLS, NO MKT. TEST, HEIFERS 48.00-53.00.
CALVES: 95. PRIME, NO MKT. TEST, CHOICE 85.00-99.00, GOOD 65.00-82.00, STANDARD 25.00-52.00; HOSTEIN BULLS 90-130 LBS. 75.00-110.00, HOLSTEIN HEIFERS 90-130 LBS. 250.00-485.00.
HOGS: 116. US#1-2, 34.00-35.25; US #1-3, 31.00-33.50.
SOWS: US #1-3 26.00-30.00.
BOARS: 13.50-22.00.
FEEDER PIGS: 130. US #1-3 20-50 LBS. 9.00-39.00.
SHEEP: 30 HEAD. CHOICE 60.00-89.00, GOOD 55.00-65.00, SLAUGHTER EWES, NO MKT. TEST.
GOATS: 35.00-125.00 EACH.

CATERPILLAR SKID STEER LOADERS



Rugged Skid Steer Loaders from Cat® have revolutionary design features including:

- Unmatched power and versatility
- Maximum operator comfort to reduce fatigue
- Designed for ease of serviceability
- Full line of attachments and work tools
- Best support in the industry

Cat Skid Steer Loaders deliver high productivity, long service life and excellent return on investment. Stop by and see us today. While you're here, ask about our aggressive lease, finance and purchase options available on Caterpillar Skid Steer Loaders.

Skid Steer Tires, Work Tools & Attachments
In addition to the Caterpillar line of tires & work tools we also carry many high quality allied vendors so we can supply the tires and tools you need for any make of skid steer loader



www.albantractor.com
Maryland & Delaware
800-492-6994



www.clevelandbrothers.com
Pennsylvania
800-482-2374

We sell solutions...

RENAISSANCE NUTRITION, INC.

MAKING SPACE IN THE RATION

Introducing...
OPTIGEN 1200

A REVOLUTIONARY SUPPLEMENT TO ENHANCE MICROBIAL PROTEIN
OPTIGEN® 1200 Controlled Release Nitrogen is a high-density protein source that creates up to 2 lbs of extra space in the diet. You can fill that space with feedstuffs to increase ration fiber and/or energy content, and help to meet almost any business goal.

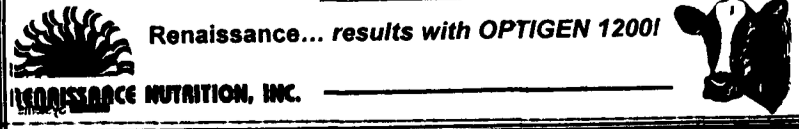
- Increase milk yield and components
- Use more homegrown forages for reduced costs
- Enhance rumen function and digestibility
- Improve heat stress tolerance

TAKE ADVANTAGE OF THE RENAISSANCE PROGRAM
Get Milk & Get Results!

Nutritional Consultants near you! Contact your local Renaissance Consultant or the Renaissance Office. Start on the road to success!

1-800-346-3649

Roaring Spring, PA
www.rennut.com



Renaissance... results with OPTIGEN 1200!