

# WENGLERS OF MYERSTOWN



Salesmen:  
Alvin Martin  
Bill Ryland



## FARM MACHINERY

(717) 866-2135

814 S. COLLEGE ST. (ROUTE 501)

www.wengers.com

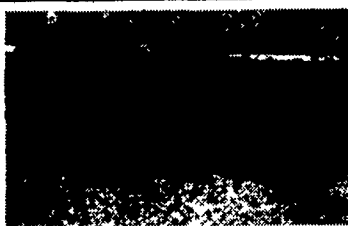
MYERSTOWN, PA 17067



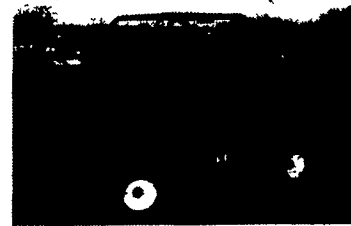
1976 Ford 2600 Diesel w/Loader, 66" Bucket, Front Pump Hydraulics, 28" Ag Tread Tires, Good Condition



Several Gators  
4) JD 6x4 diesels 2) JD 6x4 gas  
2) JD 4x2 turf  
2) Pioneer by Club Car



MF 620 12' Rock Flex Disc, 20" Blades w/Lift Cylinder



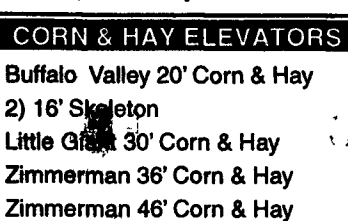
Kawasaki 2510 4x4 Mule, Runs & Works Good, Also We Have 8 Used JD Gators In Stock



Sunflower 4211 7T Soilsaver, very nice



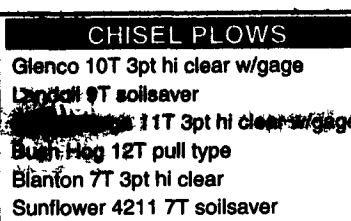
It's That Time Again, Several New 3 Pt. Hitch Snowblowers, 4', 5', 6', 7' and Used 8' and 8 1/2' In Stock



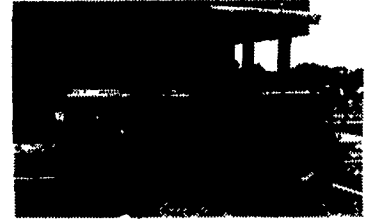
**CORN & HAY ELEVATORS**  
Buffalo Valley 20' Corn & Hay  
2) 16' Skeleton  
Little Chief 30' Corn & Hay  
Zimmerman 36' Corn & Hay  
Zimmerman 46' Corn & Hay  
2) NH 24' Corn & Hay



Case IH 6500 9T Disc Chisel, Very Nice, With Hydraulics On Coulters



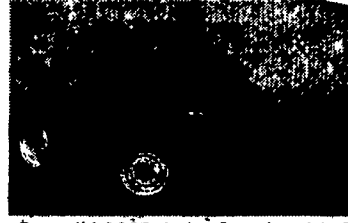
**CHISEL PLOWS**  
Glenco 10T 3pt hi clear w/gage  
Lancaster 9T soilsaver  
Lancaster 11T 3pt hi clear w/gage  
Bush Hog 12T pull type  
Blanton 7T 3pt hi clear  
Sunflower 4211 7T soilsaver  
Case IH 6500 9T soilsaver



1991 Case IH 695, 1354 Hours, Rollbar w/Canopy, 3 Pt., 2 Sets Remotes, Priced Right



Brillion P-16' Crewfoot Packer, Very Good Condition



Case IH 3220 4x4 w/Loader, 1403 Hours, Ag Tires, reverser, 6' Quik Detach Bucket On IH 2250 Quik Detach Loader, Joystick Control Valve



IH 5100 18x7 DD Grain Drill w/Grass Seed Box and Press Wheels  
(2) In Stock, All Are Nice Drills



M-C 15' Stalk Shredder, 1000 PTO w/Lift Cylinder, very nice

www.  
wengers.  
com

**COMPACT TRACTORS**

- Ford NH TC21D 4x4 w/blade
- Ford NH TC29 4x4 w/loader
- Kubota L4200 GST 4x4 w/loader
- Kubota L2650 4x4 w/loader
- Kubota L2550 4x4 loader & backhoe
- Power King 2414 w/3 pt. & PTO
- JD 4100 4x4 (like new)
- JD 870 4x4

**MANURE SPREADERS**

- Ford NH 130, Nice, 128 bu.
- NH 329 PTO Spreader, 138 bu.
- 2) IH Cub Manure Spreader
- NI 351A Spreader
- NI 18 Ground Drive
- NI 17 Ground Drive
- NI 3609 PTO Drive, 90 bu.
- New Idea 14A
- H&S 125 PTO w/pan
- Gehl 524 Slurry Special
- Pequea 50 & 70 ground drive
- Millcreek 125 PTO drive
- JD ground drive
- NH 305 V-Spreader

**DISC HARROWS**

- Krause 2200 13' rockflex
- White 271 18' Rockflex,
- JD 19' 220 Center Fold
- JD 1630 11' Cutting Disk
- JD 620 10' disc, nice
- JD 12' BWF
- JD 8' & 9' Disc
- 2) JD 6' Offset drag disc
- Oliver 9' Transport Disk
- 2) IH 10' Transport Disk
- MF 6' 3pt Offset Disc
- MF 9' 3pt Disc
- MF 620 13' Rock Flex
- IH 8' FH Disk
- Ford 14' Disk
- Ford 10' 3pt Disc
- Case 8' Offset
- Several Small 3pt Discs

**PLOWS**

- Case 4x16 Auto Reset
- Several Dearborn and Ford plows
- Several Farmall Cub and Super A
- Several IH Fast Hitch Plows
- IH 5x16 on Land Rollover
- IH, JD and Oliver Pull Type
- IH 710 5x16
- IH 450 3x3 pt. ASR
- IH 420 2x14 3pt (nice)
- JD 3600 5x18 Automatic Pull Type
- JD 1350 4x18
- White 508 4x18 ASR

**TRACTORS**

- Case-IH 3220 4x4 w/loader, very nice
- Case IH 695 LGC w/canopy
- IH 986, cab, low hours
- IH 1086, ROPS
- IH 1066, cab
- IH 1466, YAR cab
- IH 274 offset w/cultivator
- JD 4020G, canopy 2R
- JD 4020 D side console
- JD 4020 D side console, hi-crop
- JD 3020 D side console
- JD 3020 D powershift
- JD 3020 G powershift, tricycle
- JD 900 HC w/cultivator
- JD 2040 D w/loader & canopy
- JD 2630D
- JD 302D low utility
- JD 620 gas, tricycle, 3 pt.
- JD 630 try, 3 pt, fenders
- JD 720 D try, 3 pt, pony start
- JD A unstyled
- JD AR, restored, nice
- 3) JD B, 1 is unstyled
- JD 'D', pto - new tires
- JD H hand start, nice
- Ford NH 6610, 4x4, Canopy, low hours
- Ford NH 3930 w/canopy
- Ford 3910 w/side sickle
- Ford 2600 Diesel w/Loader
- Ford 2600 Gas, P.S.
- Ford 860
- Ferguson 40 cream color
- MF 240 w/Bush Hog Loader
- Case 530 gas w/ldr.
- Case/David Brown 885 diesel, nice
- AC D12 w/3 pt.
- AC D17 Series IV Gas, Wide Front
- AC D17D tricycle
- AC WD 45 diesel
- Farmall Cub, any attach. available
- 2) Farmall Super MTA
- Farmall C and Super C
- 3) Farmall 140 most attach available
- Farmall Super A w/Cult.
- Farmall Super A-1 w/sickle mower
- Farmall 100 w/FH & cultivator
- Farmall 200 w/FH & wide front

**CULTIMULCHERS & PACKERS**

- Brillion 21' X fold, Sharp
- Brillion 13'8" Cultimulcher
- Dunham 12' Cultimulcher
- Brillion 16' Transport Packer, late style
- Brillion 10' Packers
- Brillion 12' Packers
- Brillion 14' end transport
- Brillion 16' end transport
- Brillion 3', & 4' Packer Pups

**ROTARY and SICKLE MOWERS**

- Woods 2126 10' mower
- Woods 121 10' Mower
- Woods 208 8'4" Rotary
- Woods 5' Snap Coupler Rotary
- Woods 6' 3 pt. Rotary
- Woods 5', 6' and 7' rear discharge estate
- Befco 15' Turf Batwing
- Rhino 24' Turf Batwing
- Rhino TW96 8', 3 pt. Mower
- Ford 88" 3 pt. Flail Mower
- King Kutter 5' 3 pt., 6' 3pt.
- Super A Sickle Mower
- Ford 515 3 pt. Sickle
- 3) JD 350 7' and 9' 3 pt. Sickle
- 3) IH 7' Fast Hitch Sickle
- 2) IH 7' 3 pt. Sickle
- Kuhn 5'6" 3pt. Sickle (For Compacts)
- 2) NH 455 Pull Type Sickle

**GRAIN DRILLS**

- (2) IH 5100 18x7 DD w/Grass & Press
- JD 8200 21x10 DD soybean drill
- (2) JD FB-B 15x7 w/Grass
- JD FB 17x7 SD w/Grass & Fert.
- JD B 14x7 SD w/Grass
- Oliver 13x7 DD w/Grass & Fert.
- Ontario 14x7 SD on rubber

**MISCELLANEOUS**

- 4) JD 6x4 diesel Gator
- 2) JD 6x4 Gator
- 2) JD 4x2 Gator
- Kawasaki 2510 4x4 Mule
- 18.4x38 Open Center Duals
- Axle Duals to Fit JD 7400
- 52", 60" & 72" Woods 3 Pt. Rototiller
- NH 38 Flail Chopper
- Brady 722 Flail Chopper
- Corn Pro 12' Stock/Horse Trailer
- Danuser post-hole digger & others
- Cub & Super A cultivators
- Several loader attachments
- Several Steel & Wood Hay Wagons
- JD 1065 wagon gears
- Woods 6500 & 7500 3 pt. backhoe attachment
- Kubota 650 3 pt. backhoe attachment
- Degelman Rock Picker
- Leon Rock Picker
- NH 816 Forage Wagon w/roof, nice
- M-C 15' Stalk Shredder, Nice
- IH 12-1/2' Stalk Shredder
- FNH LX485 Skid Steer (low hours)
- Kuhn GMD 500 7' 3 pt. Disc Mower

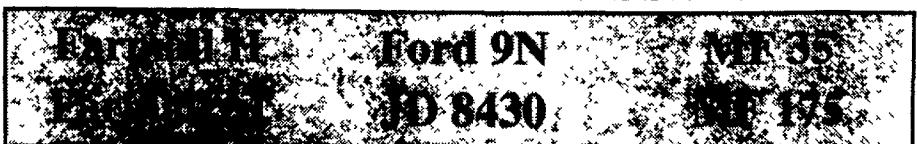
### FARM TRACTOR PARTS

USED - RECONDITIONED - NEW

800-451-5240 (717) 866-2135 Fax 717-866-7866

Mon.-Fri. 7:30 AM to 5:00 PM • Sat. 7:30 to Noon

Largest Computerized Inventory In The East  
RECENTLY ARRIVED FOR SALVAGE



FARM TOY SALE - 15% DISCOUNT ON ALL FARM TOYS

In Stock Including Pedal Tractors & Wagons

Thru December 31, 2001

tractorparts@wengers.com

www.wengers.com

