

FORKLIFTS

2,000 TO 15,000 LB.

\$2,000 & upwards

GAS/LP-DIESEL-ELECTRIC

Cushion-Pneumatic-Rough Terrain

New Komatsu Forklifts Available

PA INDUSTRIAL EQUIPMENT

(610) 369-9778

RUNNING SAWMILL

Forestall modular mill with vertical edger, 56 inch saw, 150hp motor

- 60 foot Fulgum vibrating conveyor
- Morbark 48" chipper with 150hp motor
- 30 foot green chain conveyor
- 20 foot roof top conveyor, 3 strand
- 12 foot transfer deck, 4 strand
- 20hp air compressor
- 30 foot log deck, 3 strand to the debarker
- HMC debarker with evenender & bark conveyor
- 30 foot log deck to mill
- Berlin machine band resaw
- 213 dairy feed
- Webster vibrating conveyor
- All bark & sawdust conveyors, motors, disconnects, etc.
- 235KW generator set

Asking \$85,000 540-721-2643



Tampo RS166A Roller \$4,500.00

Heavy Equipment Loader Parts

Rt. 22 Grantville, PA

(717) 469-0039

help10070.com

- #8112 Case 580SL Loader Backhoe, 1998, 4WD, Cab w/Air, Ext. Hoe, 2525 Hrs.....\$37,900
- #8110 AC 840 Wheel Loader, 1973, 1 1/2 Cu. Yd. Bkt.....\$11,900
- #7926 Case 580K Loader Backhoe, 1987, 2WD, Cab, Ex.....\$14,900
- #8088 Case 580K Loader Backhoe, 1990, 2WD, Can, Ex.....\$14,500
- #8086 Case 580SL Loader Backhoe, 1997, 4WD, Cab with A/C, Ex, 3550 Hrs.\$34,900
- #8050 Case 1845C Uniloader, 1996, Aux. Hyd, Drt Bkt, 1750 Hrs.\$12,900
- #8026 Case 580SL Loader Backhoe, 4WD, Cab, Ext, 1400 Hrs.....\$39,900
- #7975 Case 580SL Loader Backhoe, 1997, 4WD, Cab, Ext, AC, 2612 Hrs.....\$37,900
- #7976 Case 580K Loader Backhoe, 1987, Cab, 4WD, Ext, 7000 Hrs.....\$20,900
- #7923 New Holland LX885 Skidloader, 1997, cab, good tires, tracks, 2500 hrs.....\$16,900
- #7786 Case 580L Loader Backhoe, 1998, 4WD, Cab, Ex, 1274 Hrs.....\$43,900
- #7668 Gradall G660 Excavator, 22,000 Miles, 422 Hrs., 36" & 60" Buckets.....\$17,900
- #7699 Case 580K Loader Backhoe, 1987, 2WD, Can, Ext.....\$17,500
- #7822 Case 580C Loader Backhoe, 1977, 2WD, Can, Std, Very Good Cond., 6300 Hrs.\$10,900
- #7723 Case 1845C Uniloader, 1986, Aux. Hyd, Drt. Bkt, New Tires, 2740 Hrs.....\$13,900
- #7491 Case 1840 Uniloader, 1998, Aux. Hyd., Drt. Bkt., 1212 Hrs.....\$14,500
- #7517 Case 580K Loader Backhoe, 1987, 2WD, Can, Ex., 4661 Hrs.....\$16,900
- #7516 Case 580K Loader Backhoe, 1989, 2WD, Cab, Ex., 5917 Hrs.....\$19,900
- #7364 Case 95XT Uniloader, 1997, Cab w/Heat, Hyd. Coupler, 82" Bucket, 1550 Hrs.....\$27,900
- #7362 JD 410 Loader Backhoe, 1978, 2WD, Canopy, Standard, 3100 Hrs.....\$12,900
- #7870 Case 570LXT Tractor/Loader, 1996, 4WD, Canopy, 3 Point Hitch, Filled Tires, 500 Hrs.....\$24,900

Vernon E. Stup Co.

5859 Urbana Pike, Frederick, MD 21701

301/663-3185



JD 544-C Payloader, 21/2 yard Quick-fach Bucket, Rebuilt Cylinders, Radial Tires, Heat, Good Paint, Excellent Shape...\$22,500



JLG Highlift, 45', Works Good \$5,500



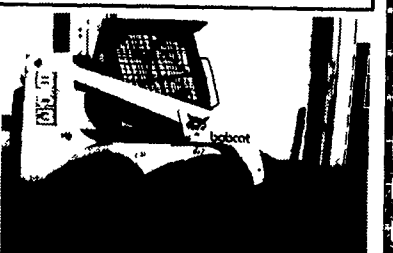
JD 450 Crawler Loader, New Steering Clutches, New Hoses & Rebuilt Cylinders, Good Under-Carriage, Excellent Shape \$8,500

(717) 273-3823

100% Financing w/Good Credit at 8% or less Int. in PA



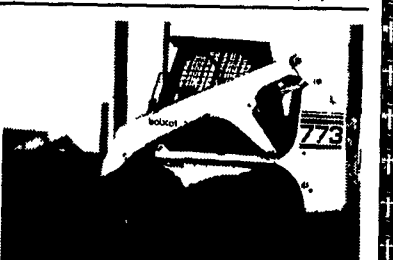
JD 550G w/6-Way & Ripper Low Hrs.....\$32,500



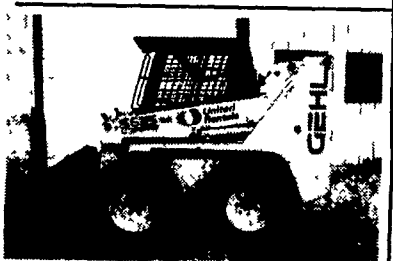
94 Bobcat 853, 1300 Hrs., New Rubber.....\$9,500



97 Bobcat 763 w/4-in-1 Bucket, 900 Hrs.....\$12,500



89 Bobcat 773, 1200 Hrs.....\$11,500



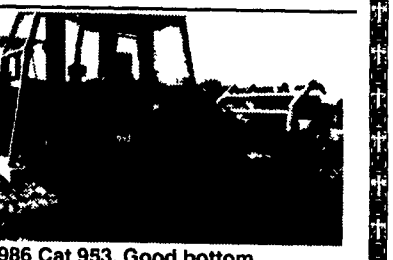
1997 Gehl Skid Loader, Model 5635, 14" Rubber, 900 Hrs.....\$13,500



96 Gehl 4625 Skid Loader, 900 Hours.....\$9,500



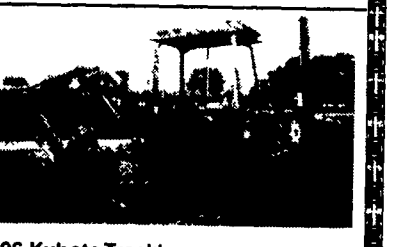
90 JD 744E Wheel Loader, New Paint, Runs Nice.....\$46,000



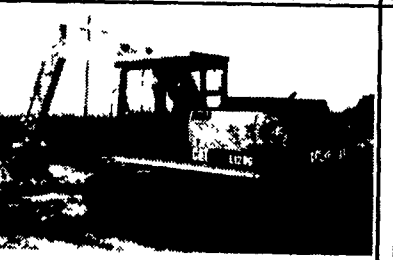
1986 Cat 953, Good bottom, LGP, with Root Rake.....\$37,000



2000 Case TLB 4+4 Extendahoe, 1230 Hrs.....\$27,500



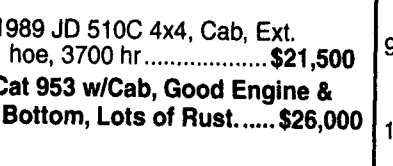
1996 Kubota Trackhoe, Rubber Tracks, Blade, 2900 Hrs., Rebuilt Engine.....\$12,500



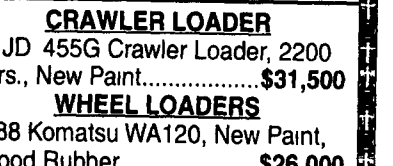
Cat E120 Hydraulic Ex. 1989 New Paint, Nice.....\$24,000



JCB 215S TLB, Cab, Air, Pallet Forks on Bucket, 3400 Hrs.....\$32,500



1989 JD 510C 4x4, Cab, Ext. hoe, 3700 hr.....\$21,500
Cat 953 w/Cab, Good Engine & Bottom, Lots of Rust.....\$26,000



CRAWLER LOADER
95 JD 455G Crawler Loader, 2200 Hrs., New Paint.....\$31,500
WHEEL LOADERS
1988 Komatsu WA120, New Paint, Good Rubber.....\$26,000

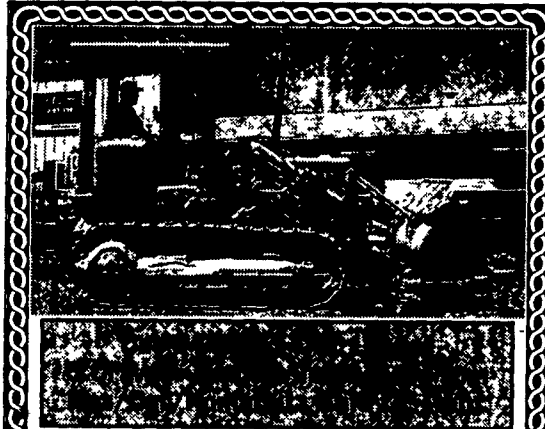
AA Equipment

717/529-2512

No Sunday Calls

1797 Robert Fulton Hwy., Quarryville, PA 17566

• We Buy & Sell • Financing Available



Heavy Equipment Loader Parts, Inc.

10070 Allentown Blvd, Grantville, PA 17028

No Sunday Calls (717) 469-0039



1995 Grove AMZ40BE

345 Hrs., 40' Reach,

48 Volt Electric

New Holland, PA

1-877-999-8267

Mid Maryland Rentals, Inc.

www.midmd.com

midmdal@fred.net

8865 Baltimore National Pike

P.O. Box 186 Middletown, MD 21769

Phone: (301) 371-5500

Fax: (301) 371-9299

Financing Available



1988 Cat 953LGP factory cab, gp bucket w/teeth, new undercarriage, v.g. condition, work ready \$43,000



1997 ASV HD4500 rubber tracks, gp bucket, 1,200 hours, v.g. condition, work ready, \$23,000



1986 Cat 943LGP, factory cab, gp bucket w/teeth, good undercarriage & condition, work ready, \$32,500



1993 Cat 312 26,000 lb. excavator new 36" bucket, VG, cond., work ready, \$32,500



1983 Case 850C 4 in 1 bucket, backhoe attachment, crops/sweeps, good undercarriage & condition, work ready. \$18,500



1989 John Deere 650G crops, 6 way blade, lever steer, v.g undercarriage & condition, work ready \$27,500

ALSO AVAILABLE

- 1990 Liebherr 621B, Cab, GP Bucket, VG Cond., Work Ready \$26,000
- 1989 Cat E120B 28,000 lb excavator, 36" bucket, fresh paint, v.g. undercarriage, 3,500 hours, work ready \$25,500
- Shooting boom forklifts, 5,000-8,000lbs, all work ready, from \$18,500
- Rubber tired backhoes, Case, Cat & JCB 2-4 wheel drive, from \$11,500
- Int 100C Crawler Loader GP Bucket, VG U/C, fresh paint, work ready \$11,000
- 1998 Bobcat 751, gp bucket w/teeth, Kubota diesel, auxiliary hydraulics, fresh paint, 1,600 hours, work ready, \$9,000 00