

Public Auction Register

Closing Date Monday 5:00 P.M.
of each week's publication
Internet Sale Register will be updated
every Sat. at 2:23 P.M.

TUES NOV 20 - 7:45 PM Feeder Cattle Sales Carlisle Livestock Market 548 Alexander Spring Rd Carlisle Pa
WED NOV 21 - 9AM Mowrey Auctin Co Machinery Auction tractors, combines and heads tillage and forage pieces Mowrey /aucton Co 301 E Frederick St., Millford Illinois 815-889-4191
WED NOV 21 - 9AM Quilt & Craft A&C Dffenbach Auction Inc 100 W Jackson St Box 186

New Holland, Pa Alan Dffenbach Auct AU-2258-L
WED NOV 21 - 4PM 7.95 acre farmette 665 Mt Airy Rd Rt 272 David S & Velma H Leid owners Kline, Kreider & Good aucts #2116 #499 #3433 717-445-4309
FRI NOV 23 - Farm Equipment 109 N Maple Ave., Leola, Pa Wolgemuth Aucts #2357
FRI NOV 23 - Farm machinery

dispersal sale lthyre Rd, Smithsburg, Md Floyd Davis
FRI NOV 23 - 10AM 1280 Co Rd 23 Penn Yan, NY Farm Machinery Dispersal Pirrung Aucts 716-728-2520

FRI NOV 23 - 10AM Loc Ridge Fire Co, along Rt 23, between Phoenixville PA and Rt 100 Antique Toy Auction, Corn Banks Auct Ted Maurer AU-000593-L 610-323-1573 or 610-367-5024

COMPLETE APPLE GRADING AND PACKING LINE

INCLUDES dip tank, grader, waxer, dryer, picking table, sizer, 2 electric baggers, with belts & round table, six picking tubs, two FMC bin fillers & all conveyors, belts and tracks. Make an Offer, Want To Sell
Call 570-539-2121
Ask for Roger or Guy

EASTERN PANHANDLE CONTRACTORS AUCTION

SATURDAY, NOVEMBER 17, 2001 AT 9:00 AM

MARTINSBURG WV

DIRECTIONS: FROM Rt 81 - Take Exit 12. Follow Rt 45 East to the 3rd light. Make a Right onto Rt 11 South 1.6 Mile, Turn Right (Beside U-Lock-It Self Storage) Approx 7/10 mile back lane to Sale Site

PARTIAL LISTING ONLY

CRAWLER LOADERS - CAT 963, Orops, GP bkt, S/N 2120507; CAT 953, Orops, GP bkt w/teeth; Liebherr 631, cab, GP bkt w/teeth; JD 555A; CASE 450B; CAT 955L, Orops, GP bkt, Big Bottom; (2) CAT 955L, GP bkt, Orops; (2) AC 76, 1 w/hoe, not running.

CRAWLER DOZERS - JD 450G, Orops, 6-w bld, S/N 753498; JD 550B, Orops, 6-w bld, S/N 725473; CAT D3B, Orops, 6-w bld; TD8C

WHEEL LOADERS - IH 510; W-20C; JD 544C, cab, 2 cu yd bkt, aux hyd, S/N 404072.

EXCAVATORS - CAT 312; CAT E120B; CAT 110B; LINKBELT 2650; HITACHI 120; HITACHI EX200 LC; BOBCAT 56 mini; CAT 225 B LC.

BACKHOES - '93 CAT 416B, cab, 4x4, extendahoe, CASE 580SK 4x4, ext hoe, Orops; FORD 555, CAT 416C, 4x4, cab, ext hoe, A/C, like new, S/N 4ZN06639; CAT 416, Orops, bckhoe; JD 310 D, Orops, std hoe, S/N 791872; CASE 580 D; CASE 680 G

SKIDSTEER - '97 NH LX885 turbo, exc cond; NH L555, S/N 627701, '88 CASE 1845C; MUSTANG 940; CLARK M174 w/tree shear; GEHL 5625 DX.

MOTOR SCRAPERS & GRADERS & FORKLIFTS - (2) CAT 631 B cushion hitch, S/N's - 13G4375, 14G4369; HONCOCK 292 motorscraper; CHAMPION 715 Erops, 12' bld, S/N 13676; GALION 104; WABCO 4-A; '96 JCB 506B, 36', 6,000 lbs. rental return; CAT 12,000 lb, TAYLOR 5,000 LB, bad motor, Elec warehouse w/charger

FARM & UTIL. TRACTORS - CASE/IH 485 util, dsl, 3 pt pto, Open canopy, JCB tractor & ldr
ROAD TRACTORS - '93 KW, Detroit dsl, 10 spd trans, air ride, 60" bunk, '87 FORD T/A tractor, Cummins, '85 MACK T/A 400 Cummins, Wetline; '89 FORD c/o, Cat eng; '87 FORD c/o, Cat eng, '87 R model MACK, T/A; '85 IHC S/A, tractor

CAB & CHASSIS - '93 FORD CF 7000 5.9 Cummins, 5 spd, P/S, A/B, 33,000 gvw; '92 GMC Topkick 3116 Cat, 5 spd, P/S, A/C; '92 IHC, HD, A/B; '88 FORD F7000, 6 6 dsl, Allison auto, P/S, A/B, GMC 6000.

DUMPS - '94 FORD F-450 stakebody dump, 7 3 dsl, auto trans, 12' body, '93 IH T/A DT466, 9 spd, 25' flat dump; '92 IHC 4700 S/A, IHC dsl, 6 spd, A/B, 10' body w/tarp, '92 FORD Aeromax, rebilt on 60 series D-eng, T/A; '91 FORD F700 S/A Ford dsl, 6 spd, A/B, 10' body; '88 FORD F-600 S/A landscape 10' dump, gas eng, 23k orig mi; '86 IH T/A, Cummins dsl, 9 spd, Jake brake, alum dump, reftb in '95, new cab, hood, body, central hyd for plow & sprdr; DM MACK T/A 14' steel dump & auto tarp; '87 IHC S/A dump, dsl, auto.

UTILITIES & SPECIALTIES - '89 FORD F-450 S mech, 7 3 dsl, 5 spd trans, util body, underhood air w/lmt 2015 mech crane; '96 CHEVY 3500 V8, auto trans, 12' u-body; '95 FORD F-250, 4x4, util; '99 FORD F-450, V-10, flatbed; '94 FORD F-250 ext cab, V8, auto, util; '90 FORD F-250 ext cab, V-8, auto, util, '88 CHEVY C-30, 6 2 GM dsl, 4 spd trans, util body; '82 FORD F-250 util, '86 CHEVY C-70, tow trk, gas eng, 5&2 trans, w/Holmes 500 wrecker, 42k

miles, '86 FORD F-250 6 cyl eng, 4 spd trans, util; '90 IH 4300 w/new 15 ton rllbd; CHEVY C65 auger trk; '89 FORD F-700 bus, dsl, Allison auto trans; '88 AUTO CAR w/lift off body; '79 OTTWA yd jockey w/Cummins dsl.

EX-BELL ATLANTIC VEHICLES - (2) DODGE cargo vans, auto, gas, low miles; '88 GMC cargo van, auto, gas, 24,000 act Miles; '88 GMC 3500, 29' TEZSEA bkt trk, auto, gas, w/generator, 85,900 act miles; '88 GMC hi-cube van, box trk, auto, gas, generator, air comp, hot air htr in rear; '89 FORD cube van, box trk, auto, gas, 23,356 act miles; '88 FORD F-450 Super Duty, util body, trk, dsl, auto; '89 FORD F-350 util body, auto gas, 35,057 act miles.

PICKUPS & VEHICLES - '97 FORD F-250 V8, auto trans; '96 CHEVY 1500 4x4, V8, auto; '90 FORD F-350 dually, dsl w/liftgate; '96 TOYOTA T-100; '96 FORD E-350 15 pass van, V8, auto; '94 CHEVY work van, V6, auto, P/S; '93 FORD ext cab, pu, auto gas; '87 DODGE Dakota, 4x4, gas, auto; '85 CHEVY stakebody, 4x4, auto, gas; '89 FORD F-150, w/side boxes; '86 DODGE D-150.

TRAILERS - '95 WITZCO 30 ton, detach, w/28' deck; '94 WITZCO Tri-A, 50 ton, detach w/Beaver tail; '94 FONTAINE 48' drop deck, air ride; '90 EAGER BEAVER 35 ton T/A, new pony motor; '87 EAGER BEAVER detach, Quad/A, Wetline; '93 JJ trash trl w/hyd ram; (2) '85 PAMO trash trls w/hyd ram; '91 TRASCRAFT 45' flatbed, air ride, spread axle; '90 TRASCRAFT 45' flatbed; 45' flat trl; '89 WITZCO RG 35 detach lowboy, 22' deck, 2-1/2' wide; EAGER BEAVER 12,000 lb tagalong; APPALACHIAN gooseneck 25', 20k lb; '97 LOAD RITE boat trl; Storage trls - 48', 45', 40', 25'; (6) Landscape trls; 22' steel dump trl; BECK skdstr trl; Dorsey trl, for 20 or 40' cont.;

EQUIP & MISC - NEW THOMAS Pro 400 screen; SULLAIR 375 a/c, dsl, 105 hrs w/trl, Titan sandblstr, 700 lb cap, remote ctrl, air feed & helmet; VERMEER boring machine; 6' snowblwr for skdstr; (10) 20' cont; (6) 40' cont; (2) '97 club cars, golf carts; (2) tar pots; Wisconsin air cooled, 4 cyl, gas, generator; Multiquip - dual weld 500 amp & generator; 11' svc body; VERMEER walk behind stump grinder; New & used fireplace Inserts; Pallet racking; Concrete tarps; EFCO concrete forms, 1000+ sq ft, w/acc's; Flat plate steel; (2) New 2001 ROBOLASER, tripod, grade rod; (2) New 2001 GEOTOP, auto level, tripod, grade rod; Trailer load Oak staircases, steps, handrails; Tri New office furn & supplies; Misc Lumber & Used Office furniture and Many Additional items Too Numerous to List...

PRE-SALE FINANCING AVAILABLE:
CONTACT BY Nov 9th-- Telmark LLC at 800-451-3322
or Keystone Leasing Co at 800-444-8333, ext 168.

SALE SITE PHONE: 304-264-8643

TERMS OF SALE: Complete Payment On Sale Day with CASH or CASHIERS CHECK. Company or Personal check accepted only if accompanied by a "Current Bank Letter of Guaranteed Payment". Visa & Mastercard accepted - a 5% administrative fee charged on all non-cash/non-check purchases.

PRE-SALE INSPECTION:
November 16th, 10 to 4

SALE CONDUCTED BY:



INDUSTRIAL AUCTIONS, INC.

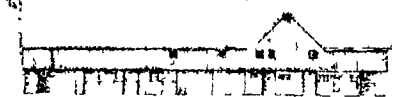
(800)443-9580 • (301)898-0340

9801 Hansonville Rd., Frederick, MD 21702

W.V. #665

AUCTION

November 17
9:00 am



185 ft. x 44 ft.

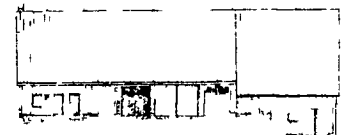


**1840 Post and Beam Barn
Hand Hewned Oak and Chestnut**

Professionally Disassembled and ID'd for potential reassembly
Items Sold Separately. Hand Hewn Beams up to 44', Hand Hewn Rafters, 2" Tongue & Groove Flooring, Tongue & Groove Beading Siding, Various Width Wide Planks, Gable Vents, Double Dutch Doors, Grainery.

Directions: 5 mi. E. of Harrisburg,
Rt. 39 Dauphin Co., Pa.
Linglestown Square South West Corner -
Look FOR SIGNS

Contact Jim Snyder
Linglestown Restoration Group
at (717) 651-5877 with Inquiries
Auctioneer Richard E. Snyder
License #AU1770L



Coffee, pastries, lunch available St Thomas Roaster
VHS video of disassembly available
Not responsible for accidents or personal injuries

REAL ESTATE AUCTION!

CHARMING 48 ACRE GENTLEMAN'S FARM WITH DEVELOPMENT POTENTIAL, TO SETTLE THE ESTATE OF PAUL C. FLAHARTY.

**SATURDAY, DECEMBER 8, 2001
10:00 A.M.**

On the premises at 580 Cool Creek Rd., Wrightsville, York County, PA. Follow Rt. 30 east or west to the Wrightsville Exit. Go south on Cool Springs Rd. 1/2 mi. to traffic signal, continue straight ahead on Cool Creek Rd. 3/4 mi. to property on right.



A gentleman's farm of singular beauty, which pre-dates the Civil War, with frontage on both sides of Cool Creek Rd., consisting of 48 acres, m/l, of which 38 acres are tillable farmland and the balance is woodland and lawn area around the buildings Improved with a stately 2 1/2 story Pennsylvania German style brick and stone dwelling with central air-conditioning. The first floor has a large eat-in kitchen, living room with fireplace and dining room with fireplace. The second floor has 3 bedrooms and bath, and a storage area by the stars to the attic.

An open basement with lovely pointed stone foundation has a family room with fireplace, half-bath and storage and laundry areas. Other features include oil FHA heat, oil-fired water heater, 200 amp. electrical service and never-failing water well and on-site septic.

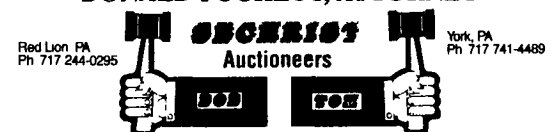


There is a large bank barn built in 1859, a corn barn, wagon shed and other outbuildings. The property is enrolled in the PA Clean and Green Tax Program. This is a near once-in-a-lifetime opportunity to own a beautiful showplace for horses or other uses limited only by your imagination. Public water, sewer and gas lines go right through the farm parallel to Cool Creek Rd. Interested parties should also investigate the development potential.

INSPECT: Open House Sessions will be held Saturday, Nov. 17th from 9:00 A.M. until Noon, and Sundays, Nov. 18th and 25th from 1:00 to 4:00 P.M. For a private showing, Phone: 717-244-0295. Sellers Disclosure Statements will be on display at Open House sessions. The property is being auctioned to settle an estate and is being offered in as-is condition.

TERMS: A non-refundable down-payment of 10% of the gavel price is required on day of auction. Balance due in-full on-or-before February 8, 2002 at closing.

**SUZANNE OLIVER AND KATHLEEN FLAHARTY, EXECUTORS
DONALD PUCKETT, ATTORNEY**



Lic. Nos. 820 & 821

Website address: www.sechristauctions.com