

# BRUBAKER'S AUTO SALES

PH. 717-866-5237

Hours: Mon.-Fri. 8 a.m.- 9 p.m.; Sat. 8 a.m. - 6 p.m.

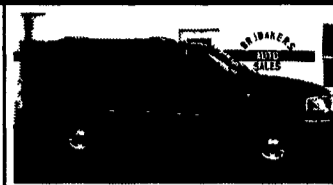
ROUTE 422  
MYERSTOWN, PA



**99 GMC SIERRA CLASSIC SLE 1500**, 4x4, Ext-Cab, Green, 350 V8, AT, AC, PW, PL, CC, Tilt, Pwr Seat, Keyless Entry, AM/FM/Cass/CD, 51,857 Mi **\$18,900**



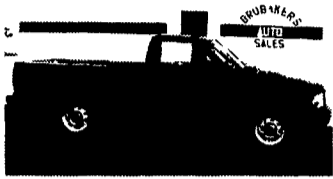
**99 FORD EXPLORER LIMITED 4X4**, Green, SOHC V6 AT, AC, PW, PL, CC, AM/FM/Cass/CD, Sunroof, Leather, CD Changer P Seats, 50,325 Mi **\$16,800**



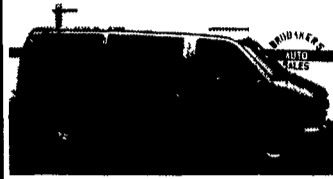
**99 FORD EXPEDITION XLT**, 4x4, 8 Pass, Black, 4.6 V8, AT, AM-FM Cass, PW, PL, CC Dual-AC, Pwr Seat, AM/FM/Cass/CD, Leather, Keyless 72,890 Mi **\$17,900**



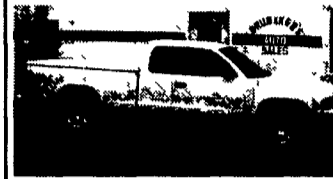
**98 DODGE GRAND CARAVAN**, Sport, White, 3.3 V6, AT, AM-FM Cass, PW, PL, CC, Tilt Dual AC, Quad-Seats, Keyless Entry, 57,975 Mi **\$11,900**



**98 GMC SONOMA SL, 2WD**, Black, 4 Cyl, AT, AM-FM Cass, AC, 28,420 Mi **\$8,900**



**97 CHEVY EXPRESS 2500**, 8 Pass, Gray, 5.7 V8, AT, AM-FM ST, AC, CC, Tilt, 58,430 Mi **\$12,900**



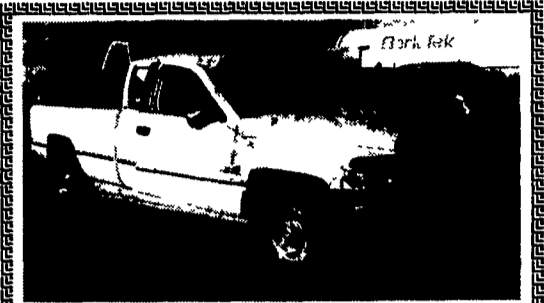
**00 DODGE DAKOTA R/T, 2WD**, Ext Cab, White, 360 V8, AT, AC, PW, PL, CC, Tilt, Keyless Entry, AM/FM/Cass/CD, 37,675 Mi **\$16,900**



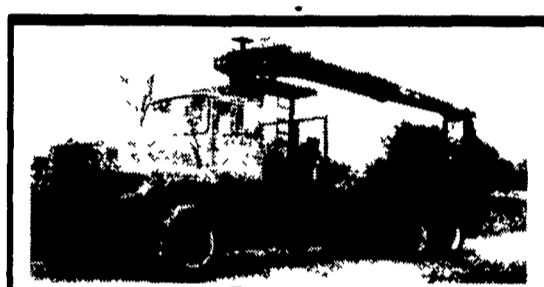
**00 FORD EXPLORER SPORT 4x4**, Green, SOHC, V6, AT, AC, PW, PL, CC, Tilt, AM/FM/Cass/CD, Pwr Seat, Keyless Entry, 21,665 Mi **\$15,900**



**1973 Spread Axle Drop Deck Flat Trailer**  
Asking \$2,500 or Best Offer  
**570-389-1139**



**1996 DODGE RAM 2500 X-Cab 2WD**, 5.9 Cummins Turbo Diesel, PW, PDL, 118,000 Miles, Rollover - Runs & Moves  
**\$5,800** Cab Available  
**717-355-0644**



**85 Ford L9000**  
Tandem Axles, w/Dry Wall Hoist  
**\$13,000**

**Weaver's Truck and Equipment Sales**  
Milton, PA  
**570/523/9598**



**Pickup Truck Rack**

- Angle frame - allows you to attach straps anywhere
- 3/4" plate
- Expanded-metal catwalk
- Custom built
- Option-diamond plate floor plate

**C. K. Manufacturing**

99 East White Oak Rd., Paradise, PA 17562  
(Between Nickel Mines & Rte. 896)  
**610-593-7938**



**FALL SPECIALS**

**CORN PRO**

**SKID LOADER TRAILERS and STOCK TRAILERS IN STOCK**

Nice Selection of Pequea Trailers In Stock



Rt. 22 West, Fredericksburg, PA  
**717-865-7575**



Trailer Financing Available or



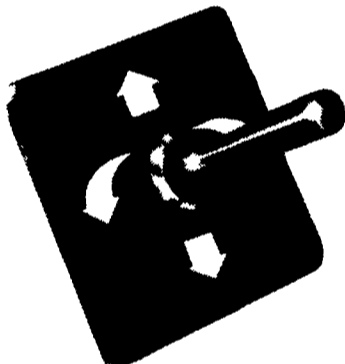
**Truck & Trailer Parts & Accessories**  
Distributor

**HOURS**  
Mon, Tues, Wed & Fri 8-5,  
Thurs 8-8, Sat 8-2

7760 Allentown Blvd.  
**Harrisburg 717-671-9115**

6250 Carlisle Pike  
**Mechanicsburg 717-795-9116**

**Trailer Repairs & Fabrication 717-795-9902**  
Orders 800-622-7003



**SLIK-STIK®**

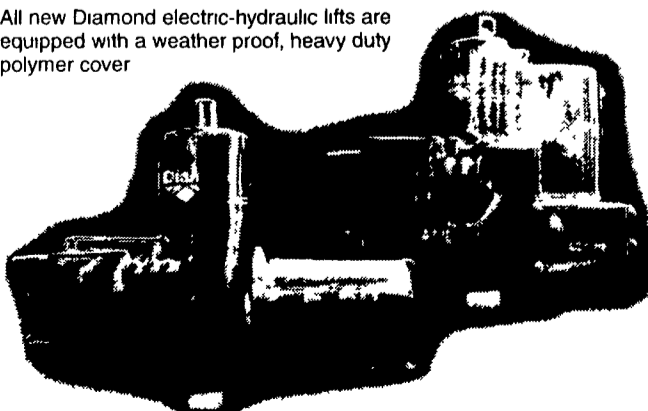


**ELECTRO-TOUCH®**



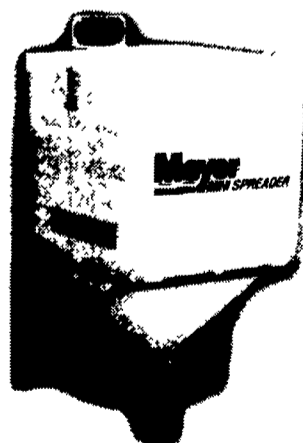
**LIFT COVERS**

All new Diamond electric-hydraulic lifts are equipped with a weather proof, heavy duty polymer cover



**PULL-AWAY™ SYSTEM**

- Pull-Away™ offers quick disconnect hydraulic couplers - an important feature when it's time for general maintenance, service or to change hydraulic oil
- Pull-Away™ is designed to place snow plow weight close to the front axle for better overall weight distribution
- Pull-Away™ has hardened steel receiver tubes with adjustable slack control, for easy on and easy off while maintaining a perfect snug fit



**The Diamond Insert Hopper Spreader by Meyer**

