

50 Enclosed Trailers In Stock



Bumper Pull Horse & Stock Trailers In Stock

TRADE-INS WANTED

Your Old Trailer May Be Worth More Than You Think!



Big Tex Single Axle
Starting at \$550
4x8 up to 6x12 \$1,144 - all sizes in between



WESTERN SNOW PLOWS
Quickly and Easily Removed
When Not In Use.



16' Bison Stock Trailer
7' W x 7' H



14' Bison Stock Trailer
7' W x 7' H

YARNALL'S EQUIPMENT CO., INC.

4171 Horseshoe Pike (Rt. 322) Honey Brook, PA 19344

1-866-228-0408 Toll Free

Open 6 Days - Til 7:00 P.M. Tuesdays

FINANCING AVAILABLE - TRADE-INS ACCEPTED

7511 Allentown Blvd.
Harrisburg, PA 17112

**75 TRUCKS
IN STOCK**

AFFORDABLE CARS AND TRUCKS, INC.

717-652-1925

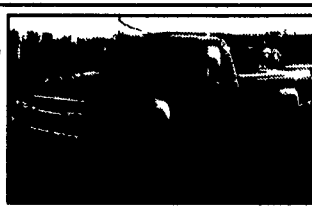
FAX 717-652-4888

www.autotrader.com/view/
affordable car and truck

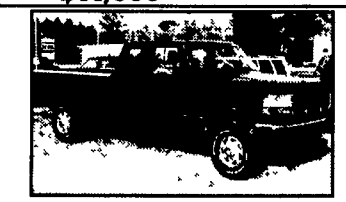
"You Gotta Believe!!"

New Exit #72A, Rt. 81 N; Rt. 22 East of Harrisburg; 3 Miles North of Hershey Park

95 CHEV 2500 SILVERADO H.D.
4x4 6.5 Turbo DSL, 5 Sp, AC, PW, Pdl, Stereo, Absolutely Flawless, 1 Owner Truck, 100,000 Miles
\$11,500



96 FORD F-250 XLT 4X4
Ext Cab Longbed, 2 Tone Paint, AT, AC, PW, Pdl, Stereo, Alloys & More, 3 Available, All 100,000 Mi
All \$14,995



94 FORD F250 XLT 4X4 EXT. CAB
Long Bed, 7.3 Powerstroke Dsl, 5 Speed, AC, All Power Options, All Black & Real Sharp Truck, 100,000+
\$13,500



97 FORD F350 XLTS
All 4x4, 1 Ton, 7.3 Powerstroke, AT, AC & Loaded, Black-Silver or Red, All 100 to 150K **\$14,500 ea.**



89 FORD F250 XL
4X4, EXT Long Bed, 7.3 International Diesel, Only 70,000 Mi, 5 Sp, AC, Cloth, 2-Tone Paint & More, 2 Local Owner, Perfect Shape, **\$9,650**



99 DODGE 2500 SLT LARAMIE
4x4, Quad Cab, Longbed Cummins, Diesel, AT, AC, PW, Cruise, All Black, Only 60,000 Miles, Absolutely Perfect
\$22,900



**97 FORD F350 XLT 4x4 Crew Cab, Long Bed, 1-Owner, 7.3 Powerstroke Dsl, AT, AC, PW, Tilt & More, Includes Reading Utility Cap Matched Red, Flawless Truck, 139K
\$19,900**



CHEVY 84 SILVERADO C-20
4x4, H D, 8600 GVW, 350 V8, Turbo 350 Trans, AC & Loaded, Sharp, 1 Owner With Over 100,000 Miles, Flawless! **\$4,995**



97 DODGE RAM 2500 SLT
4x4 Ext Cab Longbed, Cummins Dsl, AT, AC, PW, PDL, 2 Tone Paint, Alloys & More, Only 112K, Must See!
\$16,995



95 FORD F250 H.D.
4x4, PU, 351 V8, AT, AC, Only 120K, Real Good, Solid & Clean Work Truck
\$6,995



85 CHEVY 3500 1 TON 4X4
Crew Cab, Long Bed, 6.2 Diesel, 5 Speed, Loaded, Real Rare Truck, In Superb Condition, Over 100,000 Mi
\$5,495



99 CHEVY 2500 LS CREW CAB
4x4 Short Bed, 454 AT, All The Equip., Leather, CD, Gold, 35K Mi.

OVER 120 TRUCKS
Preferred Warranties Available on Most Trucks

Robby Gerhart's Truck World

2400 E. Cumberland St.
Rt. 422
Lancaster, PA
17602
717-298-7995



99 DODGE RAM 3500 QUAD CAB DUALY SLT
Cummins Turbo Diesel, 5-Spd., A/C, Most options, CD Player, 23,000 Miles, Black #D366



94 FORD F350 CREW CAB DUALY
4x4, Turbo Diesel, Pacifica Conversion AT, A/C, Most Options, CD Player, 100,000 Miles, Ex. Cond., Black & Silver



97 FORD F450 SUPER DUTY DUMP
Power Stroke Diesel, 5 Spd., 14,500 GVW, Only 23,000 Miles, Red, Excellent Condition #F1067



99 FORD F350 4X4 CREW CAB DUALY POWER STROKE DIESEL
XLT, AT, A/C, CD Player, Most Options, 18,000 Miles, DK. Blue #F1041



96 FORD F350 CREW CAB DUALY
Power Stroke Diesel, ATS Intercooler, Xlt, AT, A/C, Most Options, 165,000 Miles



95 DODGE RAM 3500 4x4 DUMP
w/8 1/2' Plow & Spreader, 5 Sp., 360, 44K Mi., Green



94 FORD F250 SUPER CAB
XLT 4x4 7.3 Turbo Diesel, AT, A/C, Most Options, 82,000 Miles Black #F1062



99 CHEV 3500 HD 10 FT. STAKE BODY DUMP
454 V8, AT, A/C, Silverado, Most Options, 29,000 Miles, 14,500 GVW, Excellent Condition White #C609



96 FORD F600 LO-PRO
w/18 Morgan Box V8, AT, PS, PB, A/C, PW, AM/FM/Stereo, 22,500 GVW, 139,000 Miles, Excellent Condition #F1064



94 FORD F350 CREW CAB 4x4
XLT, 7.3 Turbo Diesel, AT, A/C, Most Options, 118,000 Miles, Red & Silver #F1068



92 CHEVY KODIAK
16 Flatbed Dump, 6 Sp., Cat Diesel, 98K Mi., Gray



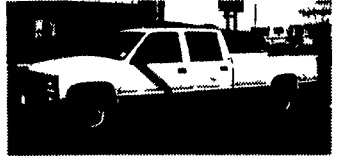
95 DODGE RAM 3500 CLUB CAB DUALY SLT w/Tool Boxes Cummins Turbo Diesel, AT A/C Most Options, 84,000 Miles, White #D365



96 CHEV 3500 EXT. CAB DUALY
Austin Conversion Pkg., AT, A/C, Most Options, 74,000 Miles, Maroon #C606



93 FORD F350 CREW CAB
4x4, XLT, AT, All Equip., CD Player, White, 81K Mi.



98 CHEV 3500 CREW CAB 2WD
6.5 Turbo Diesel, Cheyenne Pkg. AT, A/C, AM/FM, 67,000 Miles, White #C608



99 CHEV 3500 CREW CAB DUALY 4X4, 454 V8, AT, A/C, Silverado, Most Options, 68,000 Miles, White #C607



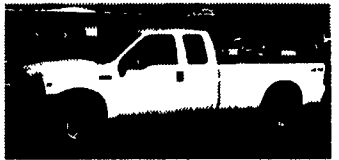
95 DODGE RAM 2500 4X4 SLT
Cummins Turbo Diesel, AT, A/C, Most Options, 119,000 Miles, Pewter #D358



96 CHEV KODIAK 10 FT. DUMP
33,000 GVW 200 HP Cat Turbo Diesel 5 Spd 2 Spd Rear Pintlehook & Trailer Brake System, 29,000 Miles Exc. Condition #C603



99 FORD F350 QUAD CAB DUALY
Power Stroke Diesel, 6 Speed, A/C, Most Options, 35,000 Miles, Red #F1054



2000 FORD F250 QUAD CAB 4X4 V10, AT, A/C, XL Trm, PS, PB, C.T., 72,000 Miles, White, Nice Condition #F1061



99 FORD F550 w/14 ft. STAKE BODY Power Stroke Diesel, AT, AM/FM, 17,500 GVW, 65,000 Miles, White #1657



95 DODGE RAM 2500 CLUB CAB SLT 4.4 Cummins Turbo Diesel, AT A/C, Most Options, 112,000 Miles, Blue #D362



99 FORD F350 CREW CAB DUALY
2WD, Power Stroke Diesel, 5 Spd., XLT-A/C, Most Options, 41,000 Miles, White #F1019



88 FORD F450 SUPER DUTY
10 Ft. Stake Dump, 460 V8, AT, AM/FM, Only 70,000 Miles, Red #F1059



89 FORD F450 SUPER DUTY 10 FT. CONTRACTOR DUMP
460 V8, 5 Spd., 89,000 Miles, 14,000 GVW, Red #F1063



95 DODGE RAM 2500 SLT 4x4
AT, A/C, 360 V8, Most Options, 120,000 Miles, Green, #D361