

Going Out Of Business Sale!

1984, 85, 86 Volvo & 12, 28 Tandem Dump, 350 HP., T-Ride, engine TD121, trans. SR70, 15-1/2 alum. Benson body, A/C, 12 sp.,
\$13,500/ea. OBO.
(410) 877-1904

GMC Step Vans 12' to 18'
 89-94 Great Condition
 V-8 Auto trans., 4 to choose from
 Starting at **\$3,500**

MACK 24' Box Trucks
 89 & 91 Good Condition
 2 to choose from
800/541-8973

7511 Allentown Blvd.
 Harrisburg, PA 17112

**75 TRUCKS
 IN STOCK**

**AFFORDABLE
 CARS AND TRUCKS, INC.**

"You Gotta Believe!!"

717-652-1925

FAX 717-652-4888

www.autotrader.com/view/
 affordable car and truck

New Exit #72A, Rt. 81 N; Rt. 22 East of Harrisburg; 3 Miles North of Hershey Park

98 Dodge Ram 3500 SLT

4x4 Laramie, Sport, Dually Quad Cab, Cummins Dsl AT, AC, PW, Loaded, Black Truck, Extra Nice, R-Code, 150K **\$18,500**



97 Dodge Ram 2500 SLT Laramie Sport 4x4

Ext Long Bed, Cummins Dsl, AT, AC, PW, PSeat, Leather, Showroom Condition 3 Available, All 100,000 + **\$17,995**



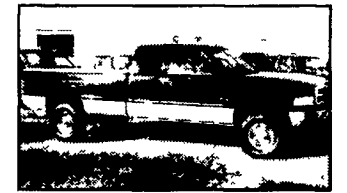
94 FORD F250 4X4 EXT. CAB
 Long Bed, 7.3 Powerstroke Dsl 5 Speed, AC, All Power Options, All Black & Real Sharp Truck 100,000+
\$13,500



97 Ford F350 XLs
 All 4x4, 1 Ton, 7.3 Powerstroke, AT, AC & Loaded, Black-Silver or Red, All 100 to 150K **\$14,500 ea.**



89 Ford F250 XL
 4x4, EXT Long Bed, 7.3 International Diesel, Only 70,000 Mi, 5 Sp, AC, Cloth, 2-Tone Paint & More, 2 Local Owner, Perfect Shape, **\$9,650**



99 Dodge 2500 SLT Laramie
 4x4, Quad Cab, Longbed Cummins, Diesel, AT, AC, PW, Cruise, All Black, Only 60,000 Miles, Absolutely Perfect
\$22,900



97 FORD F350 XL 4x4 Crew Cab, Long Bed, 1-Owner, 7.3 Powerstroke Dsl, AT, AC, PW, Tilt & More, Includes Reading Utility Cap Matched Red, Flawless Truck, 139K
\$19,900



CHEVY 84 SILVERADO C-20
 4x4, H.D., 8600 GVW, 350 V8, Turbo 350 Trans, AC & Loaded, Sharp, 1 Owner With Over 100,000 Miles, Flawless! **\$4,995**



92 FORD F250 XL
 4x4 H.D., 7.3 Diesel, AT, AC, PW, Pdl, Tilt & More, 150K, Extra Clean, Very Well Maintained Truck, All Black
\$8,495



95 FORD F250 H.D.
 4x4, PU, 351 V8, AT, AC, Only 120K, Real Good, Solid & Clean Work Truck
\$6,995



85 Chev 3500 1 Ton 4x4
 Crew Cab, Long Bed, 6.2 Diesel, 5 Speed, Loaded, Real Rare Truck, In Superb Condition, Over 100,000 Mi.
\$5,495

For Rent: Modern dairy facilities for 60 to 90 cows. Available Mar 1, 2002. Northern Lanc Co. 717-653-1079

(4) 3 & 1/3 acre lots bordering State Game Lands near Black Moshannon State Park. 814-342-2553.

Farm for sale, 100.9 ac., consisting of house, barn, numerous tractor sheds, pond, East Hanover Twp., Lebanon Co., 717-865-4353.

57 acres of rolling & flat farm land located in Perry Twp, Berks Co, PA. For information and appointment to see land call 610-285-6900, 610-682-4342, 610-562-0332.

20 Ac mountain ground, close to State Game Lands, 13 mi from Beech Creek, Clinton Co., PA. \$28,500. More parcels avail. 717-242-2945. 717-248-6628

Wanted: Farm in Perry Co, min. 75 acres, some tillable, some woods, stream, view, quiet setting all a plus. 717/933-1308

19,422 acres located in Blair's Mills. Serious inquiries only. 717/349-4018

78 Ac Mifflin Co. located 5 ml. east of Mt. Union along 22-522. Property has fields, woods, stream & a great view! Good hunting and close to Lake Raystown, approved septic, \$1,500/Ac. 717-866-6390 X306 for map.

SULLIVAN CO. 4 partials, totaling 59 ac., next to SGL, secluded, top of mount., \$119,000. 610-589-4683.

3 bdrm Rancher on 14.68 ac., 2 baths & sunroom. Eastern Shore, MD. \$172,500. 410-957-0951.

40 cow tie stall Dairy farm, located in central Wisconsin w/40 acres. Additional land ava. All new or modern buildings, 715-352-2805.

For Rent: Beautiful new 2BR cottage, deck overlooking woods & private lake, \$700 + utilities. Also ava., first class 2 horse barn. 610-670-1418.

Lowville, NY. 300 ac, good soils, located on dead-end road, bordering Black & Deer Rivers, 90 stanchion barn, pipeline, 2 bulk tanks, 3 silos, grain unit, workshop, 5br house, \$250,000. 315-493-8468 before 9pm

5 acre dairy farm, 72 tie stall barn, TMR, mattresses, tunnel ventilation, manure storage. 4BR ranch house. Bradford Co. 570/358-3742

26 Ac operating broiler farm w/productive farm market, 4br, 1 1/2 ba house. Strasburg Twp. For details call Hostetter Realty 717-442-4114

FLORIDA - Nice high & dry wooded building lots near St. Augustine. Have use of joining lake & state forest, (1) \$2900, (10) \$25,000, (25) \$55,000, (50) \$100,000, (100) \$190,000. Owner. 717-532-4882

Cambria Co., 10 acres, level, 3000' long, 2 water wells, electric, on good road. Ideal for hunting camp, area north of Ebensburg, PA. 814-674-8756

Very nice dairy facility for rent: 34 tie stalls plus 6 free stalls, 2 silos, feedlot, good pasture, ready to milk. Chester Co., 610-857-0168.

S. Huntingdon Co Farm, 150A, 60 tillable, 20 pasture, 70 wooded, exc hunting, house, barn, other out buildings, secluded area, 814-259-3781.

FARM WANTED: Retired woman from Philadelphia area looking for stone or brick farmhouse and barn for horses. Needs 40 or more acres. Prefers Lebanon Co, Berks Co., Schuylkill Co. or Northern Lancaster area. Cash Buyer. Will pay up to \$600,000 for the right place. Call Francis Ullshney at 717/272-2989 or SUBURBAN REALTY 717/867-4487

For sale: 11 acre farmette in northern Lebanon Co., PA. Brick home, bank barn, outbuilding, large pond. Great for horses. Commercial land, rent or buy along I-81 near Grantville, Lebanon Co., PA. Ulrich Professionals Realty, 717/273-9366

Peaceful setting Lancaster Co., PA 1850 6BR stone home, dairy bank barn, tobacco shed on 74 acs. AG preserve avail. Town & County Realty 717-299-4885 Nelson Hess 717-203-3231 (toll free)

105 acres in Bedford Co, exc hunting, approx 35 A tillable, asking \$165,000. Call 717-935-5262 or 717-935-2224.

350 Acre farm, Monroe Twp, Bedford Co, PA. 70A tillable, rest in pasture & woodland. Barn & outbuildings, 5BR farmhouse. 814-847-2260

Wanted: Young couple wants to buy small farm/acreage (20-80ac) Southern half of Bedford or Somerset Co., PA. 412-638-0535 iv msg

Christmas Tree Farm & Land, Bloomsburg Area, 72 Ac. 40,000 Christmas Trees, Doug Fir 5'-Up. Great Hunting, Fishing Locally, Spectacular Views. \$150,000. 610-269-1893. Discount Available for Quick Settlement

650-700 acres of land, 15 minutes from Fredericksburg, good investment, excellent hunting, asking price \$950,000 Financing available Call Ronnie at F&P Land And Timber. L.C. (804) 561-2790 or (804) 314-6444, www.fandpgroup.com

2 Huntingdon County Farms:
 275 Acs. & 61 Acs.
 Call Pete Norton at Carriage House Realty **814-643-3350**

FARMS FOR SALE
 All Sizes Dairy Farms For Sale In The Heart of Daryland Call Ken, Brian, Gerald, Scott, Ted For Free Catalog.
CHRISTENSEN SALES CORP
 Abbotsford, WI (715) 223-6345
 website: www.christensensales.com
 e-mail: info@christensensales.com

95 ACRE DAIRY FARM, LANCASTER CO.
 41 Stanchion Barn & Milkhouse Built in 1968, Large Heifer Barn, 18x60 Stave and 10x50 Solid Concrete Silos, Large Tobacco Shed, 73 Acres Tillable. 4 BR Frame House, 1-1/2 Baths, Hot Water Heat w/Oil Furnace.
 By Owner
(610) 273-3818

CENTRAL VIRGINIA: Farms and land available from 5 to 500 acres, reasonable prices, very low taxes, farmer friendly communities, agricultural economy.
State Wide Realty Co.
 Farmville, Virginia
804-392-6163
 www.vastatewiderealty.com

Dairy Farm, 176 acres Schuylkill Co, PA
 Spring water, 2 fish ponds, 2 wells, like new 80 tie stall barn w/mattresses & gravity flow manure, 300,000 gal. storage, 3 box stalls, concrete loading ramp, summer tunnel & winter eave ventilation, gas water heater w/free heater, office gas heated w/rest room & storage, utility rm, milkhouse, tank, pipeline milkers, connected feed & bedding shed, equip. shed, bank barn, free stall barn w/feed room, heated shop, 55kw generator, 3 Harvestore & 1 stave silo. 2-Story home, also like new ranch home. 570/648-8878

MISSOURI

FREE Brochure of dairy farms and ranches.
 Low prices, long growing season.
417-469-2316
 Baker Realty
 Box 36
 Willow Springs, MO 65793
 http://www.bakerealty.com

3 FARMS WANTED

I have buyers for 3 farms in Lancaster/Lebanon Counties
 • 30 Acres +, must be very good soils
 • 30 Acres +/- w/house & barn & seclusion
 • Farm w/broiler houses
 Call your realtor or call me
Kenneth H. Greider
 Realtor
 717-872-9002

ALL STAR

New Trucks

(1) 2002 Mack CV703
 E7-427 w/Engine Brake
 T2130B, 18 Frt., 46 Rear,
 227 W.B.

Used Trucks

(2) 1993 CH613 E7-350,
 Axle Back, \$11,500.00 ea.
 1995 CH613 42 in. High-Rise
 1997 CH613, Axle Back, E 7-350, 10-Spd.
 (1) E 7-427 V-Mac II Used Engine

Many other Trucks in Stock - Call For Details.

LESHER

Mack

Mack

SALES & SERVICE

2700 Cumberland Sts. Lebanon, Pa. 17042

(Route 422 West)

website: www.leshermack.com

717-273-4535

36 REAL ESTATE

14 acre farmette in Eastern Leb. Co., 10 acres tillable, 3 bedroom, 1 1/2 bath farmhouse, bank barn, pond, equipment shed, quiet private setting, 239k. 717/933-1308

Loyal Farm: exceptionally nice dairy farm on 196 acres of gently rolling land, 3 homes, 100x60 veal barn, machine shed and much more. All buildings are in very good condition, \$355,000. Harry Machtan Realty, 317 Oak St, Baraboo, WI, 608-356-8339.

Perry Co., PA. Farm, 120 Acs, 86 tillable, house, outbuildings, \$350,000. 717-944-3384

Operating dairy farm for sale. 175 acs, 135 tillable, ex soil, tie stall barn, TMR mixer, machinery shed, 3 silos, 9 room home. Managed pasture for rotational grazing. 12 miles from NY thruway. 315-858-2847

For rent, 2BR mobile home, located in the country, prefer a couple w/no children & no pets, non-smoking facility, \$500/mo + utilities, Elizabethtown area, 717-665-7284.