

Morrison's Cove Poultry & Rabbit

Martinsburg, Pa.
 Report Supplied by Auction
 Monday, October 22, 2001
 ROOSTERS 3.50-6.25.
 BANTY ROOSTERS 1.50-2.50.
 HEAVY HENS .50-1.75.
 BANTY HENS 1.00-2.50.
 PIGEONS 1.20-2.00.
 DUCKS 2.00.
 MUSCOVY HENS 3.00.
 MUSCOVY DRAKES 3.00.
 BUNNIERS .25-2.25.
 RABBITS 1.50-6.50.
 AUCTION EVERY MON., 7:30 P.M.

Daily National Grain Market Summary

St. Joseph, MO
 October 24, 2001
 Report Supplied By USDA
 Daily National Grain Market Summary

Wheat bids were mostly steady, corn and soybeans bids slightly higher. Added moisture this week may slow down harvest progress offered light support. Traders are optimistic for a good export sales number tomorrow, could lend a spark in the demand picture. Wheat bids were steady to 1 cent lower. Corn 3 to 7 cents higher. Sorghum 5 cents higher. Soybean bids were 2 to 5 cents higher. Wheat bids finished unchanged as mixed news favored today's market. Recent rains have delayed winter wheat planting areas and hampering harvest progress. Lack of export news this week despite recent purchased from Egypt, limiting losses. Corn prices slightly higher due weather conditions slowing down harvest duties. Colder temperatures are expected could lead to more losses in the fields. Soybean bids were higher as demand news is now becoming slightly more important than the estimated crop size numbers.

EXPORT SALES: PURCHASER COMMODITY TONNAGE DELIVERY DATE South Korea 11.5 pct protein HRW 3,700 Nov-Jan 14.0 pct protein DNS 8,400 White Wheat 9,400 Egypt Hard Red Winter 165,000 Nov-Dec Soft Red Winter 55,000
 Total: Wheat 241,500 tonnes.
 THESE MAY NOT BE THE ONLY

EXPORT SALES THAT HAVE TRANSPIRED, BUT THEY ARE THE ONLY SALES THAT COULD BE CONFIRMED BY USDA GRAIN MARKET NEWS.

DATE CHANGE YEAR AGO TRUCK BIDS: 10/24/01 10/23/01 10/25/00 Wheat: Kansas City (HRW ORD) 2.92-2.94 unch 2.89 Minneapolis (DNS) 3.52 ¼ dn ¼ 3.46 Portland (SWW) 3.77-3.78 unch 2.84-2.85 St. Louis (SRW) 2.78-2.79 unch-dn 1 2.34-2.35

Corn, US 2 Yellow: Kansas City 1.85-1.89 up 3 1.84 Minneapolis 1.82 ½ up 3 ¼ 1.87 ¼ So. Iowa 1.82 ½-1.83 dn ½ up 2 1.90-1.94 Omaha 1.79-1.80 up 3-7 1.81-1.83 Soybeans, US 1 Yellow: Kansas City 4.13 up 2 4.61 Minneapolis 4.10 ½ up 5 ¼ 4.58 So. Iowa 4.11-4.12 dn 3-up 1 4.61-4.65 Cent. II Processor 4.15 ½-4.21 ½ up 3 ¼ 4.65-4.72 Minneapolis truck - to arrive 20 days

FUTURES: Kansas City (Dec) Wheat 2.92 ¼ up ½ 3.03 ¼ Minneapolis (Dec) Wheat 3.12 ¼ dn ¼ 3.19 Chicago (Dec) Wheat 2.83 ¼ dn 1 ¼ 2.55 ½ Chicago (Dec) Corn 2.06 ½ up 2 ¼ 2.03 ¼ Chicago (Nov) Soybeans 4.24 ½ up 3 ¼ 4.67 EXPORT BIDS: Barge bids out of Port of New Orleans or Rail out of North Texas Gulf. Bids per bushel except sorghum per cwt.

US 1 HRW Wheat, Ord Protein: Rail 3.36 ¼-3.42 ½ unch-up ¼ 3.38 ¾-3.42 ¾ US 2 Soft Red Winter Wheat: Barge 3.16 ¼ dn 1 ¼-2 ¼ 2.72 ½-2.74 US 2 Yellow Corn Barge 2.21-2.21 ½ up 2 ¼ 2.17 ¼-2.17 ¾ US 2 Yellow Sorghum Rail 4.22-4.31 dn 2-unch 4.00-4.11 Barge 4.45-4.47 up 3-4 4.34-4.45 US 2 Yellow Soybeans Barge 4.53 ½ up 2 ¼ 4.93-4.94

Kutztown Produce Hay Auction

Fleetwood, Pa.
 Report Supplied by Auction
 Saturday, October 20, 2001
 Hay—Straw—Grain
 ALFALFA HAY: 80.00-170.00.
 MIXED HAY: 80.00-165.00.
 GRASS HAY: 90.00-132.00.
 TIMOTHY HAY: 145.00-150.00.
 HAY BY THE BALE: 3.10.
 RYE SEED: 5.25.
 FIREWOOD: 50.00-80.00.
 EAR CORN: 80.00 PICK-UP LOAD.
 HAY, STRAW, FIREWOOD SALE EVERY SAT., 9 A.M.

Corn Belt Feedstuff

St. Joseph, Mo.
 October 23, 2001
 Report Supplied By USDA
 Corn Belt Feedstuff Wholesale Bids. Truck or Rail dollars per ton. Feedstuff prices were mostly lower for the week. Board weakness was a major factor along with harvest pressure. USDA increased their production estimates for this year's corn and soybean crops last week. Export demand continued slow.

SOYBEAN MEAL: 44 percent rail bids .50 to 2.50 lower at 151.50-154.50. 48 percent rail 1.50 to 2.50 lower at 157.50-162.50 Truck 44 percent 50 to 1.50 lower at 153.50-158.50. 48 percent 1.50 lower at 159.50-166.50 per ton.

CORN BY-PRODUCTS: Gluten Feed 21 percent, Interior Points, 6.00 lower at 60.00-70.00; Chicago 1.00 lower to 5.00 higher at 65.00-75.00. 60 percent Gluten Meal, Interior Points, 5.00 lower to 5.00 higher at 255.00-260.00; Chicago steady to 10.00 lower at 255.00-265.00 per ton. Rail Hominy Feed, Central Illinois Points, steady to 2.00 lower at 58.00-64.00; truck steady to 2.00 lower at 60.00-65.00. Crude Corn Oil steady to 25 points lower at 17.00-17.50 cents per lb.

MIDDINGS: Northwest 1.00 to 2.00 lower at 60.00-64.00; Buffalo 1.00-2.00 higher at 53.00-64.00 per ton.

ALFALFA PELLETS: Toledo, Ohio 17 percent dehydrated, steady at 140.00-165.00; 15 percent steady at 125.00-162.50 per ton.

DISTILLER'S DRIED GRAINS: Central Illinois steady to 1.00 higher at 90.00-93.00; Chicago steady to 3.00 lower at 92.00-98.00; Lawrenceburg, IL steady at 92.00. Nebraska 3.00 to 5.00 lower at 97.00-100.00; Minneapolis 1.00 lower to 5.00 higher at 85.00 per ton.

BREWER'S DRIED GRAINS: Newark, NJ steady at 77.00; Williamsburg, VA steady at 67.00 per ton.

Pa. Grain Report

October 22, 2001
 Report Supplied By PDA
 COMPARED WITH LAST MONDAY'S MARKET FOR EASTERN AND CENTRAL PENNSYLVANIA
 Corn mostly .03 to .05 lower. Wheat mostly .10 to .15 higher. Barley and Oats steady to strong. Soybeans .10 to .15 lower. Ear Corn and New Ear Corn

mostly steady. PRICES PAID DELIVERED TO DEALERS DOCK, All prices per bushel, except Ear Corn per ton.

SOUTHEASTERN PENNSYLVANIA
 CORN NO. 2-Y range 2.09-2.25, average 2.19. WHEAT NO. 2 range 2.75-3.01, average 2.89; contract for harvest 2.75-2.95. BARLEY NO. 3, 1.50-1.70, average 1.64; contract for harvest 1.25 OATS NO. 2 range 1.60-1.75, average 1.71. SOYBEANS range 3.85-4.05, average 3.95. GR. SORGHUM 2.06; EAR CORN range 60.00-70.00, average 63.83 New Ear Corn, average moisture, 50-58 00, average 55.57.

SOUTH CENTRAL PENNSYLVANIA
 CORN NO. 2-Y range 1.96-2.25, average 2.13; WHEAT NO. 2 range 2.30-2.75, average 2.43; BARLEY NO. 3 range 1.30-1.60, average 1.52; OATS NO. 2 range 1.10-1.50, average 1.31; SOYBEANS NO. 1 range 3.64-4.00, average 3.84; EAR CORN range 60 00-

Westminster Hay

Westminster, Maryland
 Report Supplied By Auction
 October 23, 2001
 Hay—Straw—Grain
 135 LOTS.
 ALFALFA: 1.50-4.40 BALE.
 TIMOTHY: 1.70-3.90 BALE, 18.00-20.00 LARGE ROUND.
 MIXED HAY: 1.20-4.30 BALE, 15 00 LARGE ROUND.
 GRASS: 90-2.50 BALE, 12.00-20.00 LARGE ROUND.
 CLOVER MIX: 1.70-2.70 BALE.
 STRAW: 2.20-3.00 BALE.
 BEAN STRUBBLE: .20 BALE
 OATS: 4.25-4.75 BAG.
 HORSE FEED: 6.00-7 00 BAG.
 FIREWOOD: 82 00-90 00 CORD.

Kirkwood Hay

Kirkwood, Pa.
 Report Supplied By Auction
 Tuesday, October 23, 2001
 41 LOTS.
 MIXED HAY: 1ST CUTTING 65.00-160.00, 2ND CUTTING 80 00-180.00.
 TIMOTHY: 159.00-185 00
 ALFALFA: 1ST CUTTING 130 00-147.00, 2ND 141.00-185.00, 4TH 150.00-215.00.

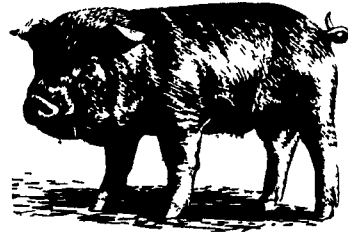
CLOVER: 107.00
 GRASS: 65.00-135.00.
 WHEAT STRAW: 80.00-172 00.
 BARLEY STRAW: 142.00-150 00.
 OAT STRAW: 132.00.
 CORN FODDER: 95.00-101.00.
 SALE DAY TUES. 10 A.M.

Livestock Cooperative Auction Market Of North Jersey

Hackettstown, N.J.
 Report Supplied by Auction
 Tuesday, October 23, 2001
 Hay—Straw—Grain
 ALFALFA 4 LOTS, 2.80-4.00 BALE
 MIXED HAY 33 LOTS, .75-3 00 BALE.
 TIMOTHY: 5 LOTS, 1.60-2.00 BALE
 GRASS: 12 LOTS, 1.10-3.00 BALE
 MULCH: 1.30.
 OAT STRAW: 7 LOTS, 1.00-2.30
 WHEAT STRAW: 2.60.
 CORN SCREENINGS 3 90.
 64 LOTS TOTAL.

Middleburg Hay

Middleburg, Pa.
 Report Supplied by Auction
 Tuesday, October 23, 2001
 HAY: 29 LOTS, 46 LOTS TOTAL
 ALFALFA: 2 LOTS, 115 00 AND 137.50.
 MIXED HAY 16 LOTS, 47 50-155.00.
 TIMOTHY: 9 LOTS, 85 00-120 00
 ROUND BALES: 28.00-45 00
 ORCHARDGRASS: 65 00 AND 92 50.
 STRAW: 115 00.
 EAR CORN: 10 LOTS, 75 00-110 00
 FIREWOOD: 40.00 AND 57 50 LOAD.
 OATS: 2 LOTS, 2.45-2 60 BU.
 RYE 4.10 AND 6.50 BU.



for the personal touch
McCoy Cattle Co.
 Lancaster Stockyards
 Your Marketing Link
 to the Eastern Cattle Feeder
 Contact: Bill McCoy Pat McCoy
 Office: 717-397-5122 Res: 717-656-0296
 Res: 717-569-5044 Cell: 717-475-5122

Belleville Hay
 Belleville, Pa.
 Report Supplied By Auction
 Wednesday, October 24, 2001
 Hay—Straw—Grain
 ALFALFA HAY: 85.00-147.50.
 MIXED HAY: 80.00-145.00.
 STRAW: 140.00.

A&C Diffenbach Auction Inc.
 100 West Jackson Street • New Holland, Pennsylvania 17557
 Office: (717) 355-7253 • FAX: (717) 355-9547
HAY & GRAIN SALE EVERY MONDAY - 10:00 A.M.

WED	NOV 7	WINROSS, HESS, FARM TRAC & TOYS	6 30 PM
FRI	NOV 9	TRACTORS, FARM EQ & SUPPLIES	9 00 AM
TUES	NOV 20	QUILT, CRAFT & BUGGY	9 00 AM
WED	NOV 21	QUILT & CRAFT	9 00 AM

EQUIPPED FOR AN AUCTION AT YOUR PLACE OR OURS
 ALAN DIFFENBACH AUCT. -AU2258-L

automatic farm systems
 608 E. Evergreen Road, Lebanon, PA 17042
 Phone: 717-274-5333
 e-mail: afa@nbn.com

ON FARM STORAGE FOR MAXIMUM PROFITS

GSI

- FARM BINS
- GALVANIZED FANS AND HEATERS
- TOP DRY SYSTEMS
- GRAIN DRYERS
- HOPPER BOTTOM TANKS
- COMMERCIAL FLAT BOTTOM
- FLEX-FLO FEED SYSTEMS
- SAFETY ACCESS EQUIPMENT

We Supply Expert Installation and Service
 Check Our Prices Before You Buy

GSI FEED BINS

Automatic Farm System
BIN UNLOADER
 Ensures Dense Material Flow

Expert Installation

Are You Interested In Extra Farm Income?

We have swine finishing contracts available

We Offer

- Qualified Service Personnel
- Sound Genetic Program
- Building Management/Environmental Monitoring
- Facility Planning
- Technical Support
- Cash Flow Projections
- Competitive Contract Payments
- Purina Feeding Programs

For more information Call
1-800-518-6458 Ext. 292

Purina Mills, Inc.
 Serving The Needs Of Agriculture

WE CUSTOM MANUFACTURE
 Painted, Steel, Galvanized and Stainless Steel
 Fabrication, Feed Bins, Hoppers,
 Dump Pits, Augers, and Control Systems
 to Automate Your Operation.