

**Leola Produce**

Leola, Pa

Report Supplied by Auction  
October 16, 2001

APPLES: 1.00-4.00 1/2 BU.  
BEANS: GREEN 12.00-20.00 BU.  
BROCCOLI: .25-.70 HEAD.  
CABBAGE: RED .30-.45, GREEN .20-.60 HEAD  
CAULIFLOWER: 1.00-1.75 EACH  
CIDER: 1.25-1.50 GAL  
EGGPLANT: 12.00-14.00 BU.  
PEARS: 3.00-6.00 1/2 BU.  
PEPPERS: GREEN SM. TO LRGE 3.00-7.00 1/2 BU., RED 10.00-16.00 BU  
POTATOES: RED AND WHITE 3.00-6.00 50 LBS.; SWEET 4.00-6.00 1/2 BU

RADISHES: 4.00-6.00 1/2 BU.  
RED BEETS: 2.00-4.00 1/2 BU. CUT  
SPINACH: 12.00-15.00 BOX.  
SQUASH: ACORN 1.00-3.00, BUTTERNUT 3.00-5.00, BOTH BU  
TOMATOES: RED SM. TO LRGE 12.00-35.00, YELLOW 18.00-24.00, GRAPE 18.00-20.00 12 PINT FLAT  
TURNIPS: 3.00-8.00 25 LBS.  
FLOWERS: MUMS 1.00-1.25.  
ORNAMENTALS: FACE PUMPKINS 1.00-2.50; PRIZE WINNERS 10.00-32.00; GOURDS 1.00-3.00 1/2 BU.; JBL 8.00-10.00 1/2 BU.; BABY PAMS .10-.30, INDIAN CORN .20-1.00 BUNCH  
SALE DAYS: MON., TUES., THURS., FRI., 8:30 A.M.

**Weaverland Produce Auction**

New Holland, Pa.

Report Supplied by Auction  
October 18, 2001

APPLES: 1.50-6.50.  
BROCCOLI: 25-.55 HEAD.  
CABBAGE: GREEN .35-.50 HEAD.

CAULIFLOWER: 1.00-2.00.  
CIDER: .75-1.75 GAL.  
EGGPLANT: 1.00-1.75 1/2 BU.  
ONIONS: SPANISH 5.25-6.25 50 LBS.  
PEPPERS: GREEN SM. TO LRGE. 2.00-4.00, RED SM. TO LRGE. 1.00-6.00, BOTH BU., HOT SM. TO LRGE 2.00-2.25 1/2 BU.  
POTATOES: RED 4.00-7.00; WHITE 3.00-6.50, BOTH 50 LBS.; SWEET 2.00-6.00 1/2 BU.  
PUMPKINS: NECK .10-1.35.  
RED BEETS: 10 CT. 1.00-6.00.  
SPINACH: 6.00 1/2 BU.  
SQUASH: SUMMER .25-.27, WINTER .10-.17, ACORN .10-.25, BUTTERNUT .05-.35, SPAGHETTI .15-.20.

TOMATOES: RED SM. TO LRGE. 12.00-20.00.  
FLOWERS: MUMS .25-3.00.  
ORNAMENTALS: PRIZE WINNERS, BIG MACS 1.00-6.00; GOURDS .05-.55; GOOSE GOURDS 1.00-1.25; JBL 4.00-5.25 1/2 BU.; INDIAN CORN .15-1.75; INDIAN FINGERS .10-.45; POPCORN .05-1.00.  
NEXT WEEK'S SALE DAYS: TUES., THURS., FRI., 9 A.M. CRAFT AUCTION NOV. 10, 9 A.M.

**Kirkwood Produce**

Kirkwood, Pa

Report Supplied by Auction  
Tuesday, October 16, 2001

APPLES: 1.00-4.50 1/2 BU.  
BEANS: GREEN 4.00, LIMA 10.00-13.00, BOTH 1/2 BU., SHELLED 1.75-2.50 PINT.  
BROCCOLI: .24-.66 HEAD.  
CABBAGE: GREEN 3.50-5.50 50 LBS.  
CAULIFLOWER: 1.10-1.75 EA.  
EGGPLANT: 2.00-4.00 BU.  
ONIONS: KANDY 7.00-8.00 1/2 BU.

PEARS: KOREAN 5.50 1/2 BU.  
PEPPERS: GREEN SM. TO LRGE. 5.00-6.00 1/2 BU.  
POTATOES: RED 1.50-2.00 20 LBS.; WHITE 1.25-2.00 20 LBS.; SWEET 2.50-5.00 1/2 BU.  
SQUASH: BUTTERNUT 2.00-2.50, CARNIVAL 2.00-3.50 1/2 BU., ACORN 1.00-2.00 BU., SPAGHETTI 2.00-3.00 1/2 BU.  
TOMATOES: SM. TO LRGE. RED 5.00-23.00 25 LBS.  
TURNIPS: 2.50-5.00 BAG  
FLOWERS: MUMS .35-3.50; FLOWERING KALE .75-1.00.  
ORNAMENTALS: FACE PUMPKINS SM. TO LRGE. .10-5.50, PRIZE WINNERS, BIG MACS 3.25-5.50, BABY PAMS .05-.17 EACH, INDIAN CORN .10-.55 BUNCH; FINGER CORN .05-.15 BUNCH, GOURDS .25-3.50 1/2 BU.; GOOSE GOURDS .10-1.50 EA.; MINI STRAW BALES 1.50.  
SALE DAYS: TUES. AND THURS., 9 A.M.

**Shippensburg Produce Auction**

Shippensburg, Pa.

Report Supplied by Auction  
Oct. 11 and 16

APPLES: 1.50-3.75 1/2 BU.  
BROCCOLI: 7.50-9.00 BU.  
CABBAGE: 3.50-5.00 50 LBS.  
GRAPES: 6.00-10.00 PECK.  
ONIONS: 7.00-11.00 50 LBS.  
PEACHES: 4.50-8.50 1/2 BU.  
PEARS: 8.50-9.50 1/2 BU.  
PEPPERS: 3.00-6.00 1/2 BU.; HOT 2.00-10.00 1/2 BU.  
POTATOES: 3.50-8.50 50 LBS.; SWEET 5.50-10.00 1/2 BU.  
PUMPKINS: NECK .70-1.00 EACH.  
RED BEETS: 4.50-6.50 1/2 BU.  
SQUASH: 2.00-4.00 1/2 BU.  
SWEET CORN: 1.20-1.90 DOZ.

TOMATOES: RED 9.00-22.00 25 LBS.  
TURNIPS: 7.00-8.00 1/2 BU.  
FLOWERS: MUMS .20-3.50, JUMBO 5.00-6.00; PANSIES 7.50 FLAT.  
ORNAMENTALS: FACE PUMPKINS SM. TO LRGE. .10-4.10; BABY PAMS AND MYSTIC .03-.60; JBL 2.50-6.00 1/2 BU.; GOURDS 2.00-4.00 1/2 BU.; INDIAN CORN .20-1.80 BUNCH, FINGERS AND STRAWBERRY .10-.35; MINI BALES 1.20-1.70.  
NEXT WEEK'S SALE DAYS: TUES. AND THURS. AT 9 A.M.

**Four States Livestock**

Hagerstown, Maryland

Report Supplied by Auction  
October 17, 2001

SLAUGHTER COWS: 95 HEAD, STEADY TO 1.00 HIGHER. BREAKERS 37.00-43.00, BONERS 37.00-42.00, LEAN 33.00-38.00, THIN 32.00 DOWN.  
BULLS: 9 HEAD. YG#1 50.00-54.00, HIGH DRESSING LIMOUSIN AT 58.00, YG#2 44.00-49.00.  
FED STEERS: 25 HEAD, 1.00 HIGHER. HIGH CHOICE TO PRIME 1200-1475 LBS. 68.00-71.25, CHOICE 2-3 67.00-70.50, LOW CHOICE 62.00-67.00, LOW CHOICE HOLSTEINS 1400-1600 LBS. 53.00-56.50.  
FED HEIFERS: HIGH CHOICE 2-4 1100-1375 LBS. 65.00-68.75, LOW CHOICE 63.00-66.00, HIGH CHOICE 3-4 950-1100 LBS. 62.00-64.00.  
CALVES: 141 HEAD, GOOD SLAUGHTER. 80-110 LBS. 40.00-55.00; HOLSTEIN BULLS RETURNING TO FARM 5.00 LOWER. #1 90-110 LBS. 100.00-120.00, 80-90 LBS. 75.00-100.00; #2 90-120 LBS. 80.00-100.00; STARTED BULLS 125-175 LBS. 70.00-90.00; HOLSTEIN HEIFERS 15 HEAD. #2 100-115 LBS. TO 485.00, 80-100 LBS. 280.00-440.00; BEEF X BULLS AND HEIFERS TO 135.00.  
BUTCHER HOGS: NO TOP WEIGHTS OFFERED. 300-400 LBS. 31.00-32.50; 1 494 LBS. AT 34.00.  
SOWS: 25 HEAD. 300-500 LBS. 29.00-32.25, 500-650 LBS. 30.00-34.25.

BOARS: 2 HEAD. 400-700 LBS. 20.00-21.00.  
STOCK CATTLE: 125 HEAD, INCLUDES 42 HOLSTEIN HEIFERS. STEERS, FEW OFFERED. 300-500 LBS. 75.00-86.00, 500-700 LBS. 65.00-75.00.  
HEIFERS: 5.00 LOWER. 300-500 LBS. 63.00-75.00, 500-700 LBS. TO 63.00, 700-900 LBS. TO 61.00 BULLS: MED. AND LARGE FRAME 200-400 LBS. 80.00-93.00, 400-600 LBS. 70.00-81.00, 600-700 LBS. 50.00-60.00, 1 ANGUS 885 LBS. AT 54.00.

DAIRY REPLACEMENTS: 28 HEAD, ACTIVE BIDDING. LARGE FANCY SPRINGERS 1400.00-1760.00, LARGE FRESH, 1 AT 1250.00, MEDIUM FRESH 650.00-975.00, LARGE SHORT BREDS 900.00-1160.00, LARGE OPEN HEIFERS 800.00-950.00, 4 REGISTERED 975.00-1175.00, MEDIUM OPEN 500.00-800.00, SMALL OPEN 300.00-600.00, SERVICE HOLSTEIN BULLS 560.00-685.00.

GOATS: 15 HEAD. MEDIUM 30.00-40.00, SMALL 20.00-30.00.  
PIGS AND SHOATS: 32 HEAD. BY THE HEAD, 5 HEAD 75 LBS. AT 28.00; BY THE LB. CULLS 100-125 LBS. 41.00-48.00.  
NEXT WED., OCT. 24, SPECIAL FEEDER CATTLE SALE, APPROX. 7:45 P.M.

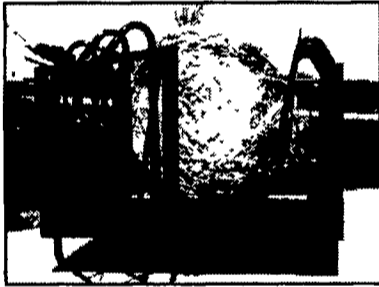
**Dewart Livestock**

Dewart, Pa.

Report Supplied by Auction  
Monday, October 15, 2001

STEERS: 60.00-71.00.  
HEIFERS: TOO FEW TO QUOTE.  
GOOD COWS: 38.00-42.50.  
CANNERS AND CUTTERS: 25.00-38.00.  
BULLS: 43.00-49.00.  
VEAL: 90-190 LBS. 100.00-515.00; 70-90 LBS. 50.00-100.00.  
HOGS: 32.00-37.00.  
SOWS: NONE.  
FEEDER PIGS: 30.00-46.00 HEAD.

Can You Afford To Waste Hay? Try the **BALE BOSS Hay Saver** Barn Equipment



- ❖ Free Stalls
- ❖ Sand Traps™
- ❖ Self-locks
- ❖ Waterers
- ❖ Gates
- ❖ Bale Boss Hay Savers

Call: Joe Speicher  
(814) 624-0370  
1-888-605-2422

Quality Barn Equipment  
at Economical Prices

**Efficient Designs to Meet Your Needs**



**OFFICE FACILITY**

- Site Layout
- Building Design
- Construction

- Horse Stall Barns and Riding Arenas
- Ag Workshop/Machinery Storage
- Commercial • Industrial
- Churches • Retail • Offices

**AGRI-INC.**

The Construction Professionals

Designing and Building Quality Facilities for More Than 33 Years  
10 Parkview Heights Rd., Ephrata, PA 17522

WWW.AGRIINC.COM e-mail buildings@agriinc.com

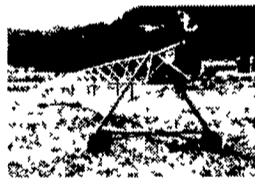
717-721-3535 • 800-717-2474



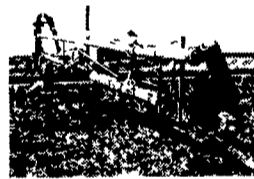
**Fertilize THIS Fall**  
WITH MID-ATLANTIC



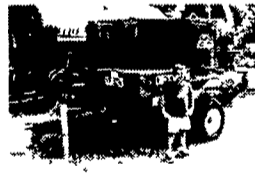
**PUMPS & MORE**



Micro Pivot from Hydrus



New Houle 42' Multi-Purpose Lagoon Pump  
034 mau



AgriChopper Round Bale Chopper  
All hydr controls (Boy sold separately) 064 mau

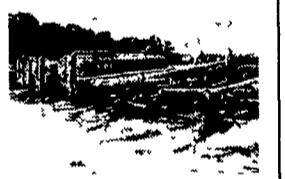


Gehl Lagoon Pump  
068 mau

**TANKS & SPREAD**



Hydra Spread Model 275  
066 mau



Good Selection of new tanks and pumps available for fall spreading.  
065 mau

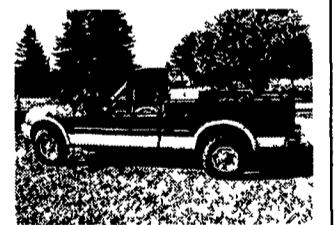
**JUST ARRIVED!**

**1998 Ford F250**

Blue, 5.4L Triton, 78K, 4-Wheel Drive, New Brakes, New Tires, Trailer Hitch

**\$15,500**

069 mau



**PUMPS**

- 32' Lagoon Super Pump - Rental
- 32' Multi-Purpose AgiPump - Used
- 42' Lagoon AgiPumps
- (2) Irrigation Pumps - Rental
- 42' Multi-Purpose AgiPump - New
- 8'-12' Tri Model AgiPump - Rental
- Maxi Pump - Rental

**TANKS & SPREADERS**

- B-Model Mack w/4000(?) Gallon Tank (030-mau)
- Barron & Brothers 20' Litter Spreader (032-mau)
- 5,250 Gal Houle Spreader - used

**MISCELLANEOUS**

- Rubber Tire Scraper for Skid Steer (011-mau)
- 1990 Case 1H 7140 Magnum (013-mau)
- (2) Cadman Hose Reels
- SEVERAL USED IRRIGATION REELS AVAILABLE

CALL US FOR MORE INFORMATION AND PRICING  
See more equipment online at [www.midatlanticagri.com](http://www.midatlanticagri.com)

Proudly Featuring:



**agri systems**

[www.midatlanticagri.com](http://www.midatlanticagri.com)

**LIQUID WASTE EQUIPMENT SPECIALISTS**

800-222-2948 • 717-529-2782

4019 Ashville Rd. • Quarryville, PA 17566