

**WILLIAM H. WESSELS  
USED CARS**



00 Ford Econoline V-6, Auto, AC, 15,000 Miles, Balance of Factory Warr. **\$13,900**



00 GMC G2500 Extended Cargo 5.0L V8, Auto, A/C, 29,000 miles **\$15,900**



00 Dodge 15 Pass. Van, Dual AC & Heat, 11,200 Miles, Factory Warranty **\$18,900**



00 GMC K2500 4x4, V-8, Auto, AC, 17,110 Miles **\$18,900**



99 Ford 12 Passenger Van, V8, PW&L, 23,000 Miles **\$15,900**



98 Honda Accord LX, 5 Speed, Black, 19,000 Miles **\$13,900**



99 Ford F150 Ex. Cab XLT, 4x4, 5.4L, V8, Auto, Quad Cab, 51,329 Miles **\$19,900**



99 Dodge Ram 2500 Extra Cab, V8, Auto, AC, 84,811 Miles **\$13,900**



98 Honda Accord LX, Auto, 22,000 Miles **\$13,900**



98 Chevy K2500 4x4, V-8, Auto, AC, 28,000 Miles **\$17,900**



98 Dodge 1/2 Ton Cargo Van, 3.9 6 Cyl, Auto, AC, 101,075 Miles **\$8,900**



98 Ford F250 Ex Cab 4x4, V8, Auto, AC, 105,676 Miles **\$11,900**



98 Dodge Durango SLT 4x4, V-8, Auto, AC, Nicely Equipped, 54,000 Miles **\$17,900**



98 Chevy 3500 Crew Cab, V-8, Auto, AC, 45,000 Miles **\$20,900**



98 Jeep Cherokee Sport, 4.0 L, 6 Cyl., Auto, AC, 16,110 Miles **\$15,900**



95 Chevy K2500 Ext. Cab 4x4, 350 V-8, Auto, AC, 102,000 Miles **\$10,900**



97 Chevy 14' Box Truck, V8, Auto, AC, Only 15,500 Miles **\$17,900**



97 GMC C6500 20' Box Truck, Rail Lift Gate, 3116 Cat Diesel, 25,600 GVW **\$16,900**



97 Ford F250 Utility w/Lift Gate, V-8, Auto, AC, 110,300 Miles **\$7,900**



96 Freightliner Day Cab; Cummins M11, 330Hp, 10 Speed, Air Brakes, 600,000 Miles **\$18,900**



97 Ford F150 XLT 4x4, 4.6 V-8, Auto, 51,000 Miles **\$14,900**



97 GMC Suburban SLT, 61,000 Miles, Blue & Silver **\$20,900** **\$19,900**



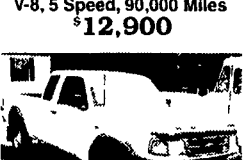
96 Ford F350 Stake Dump, V-8, 5 Speed, 90,000 Miles **\$12,900**



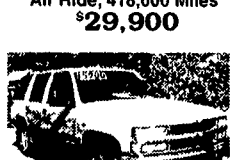
94 Kenworth W900L, 3406 Cat Eng. w/Jake Brake, Sleeper, 10 Speed Eaton Fuller Trans., Air Ride, 418,000 Miles **\$29,900**



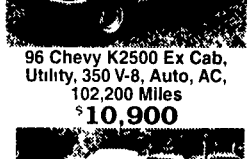
96 Chevy K2500 Ex Cab, Utility, 350 V-8, Auto, AC, 102,200 Miles **\$10,900**



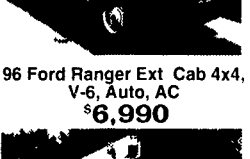
96 Ford Ranger Ext Cab 4x4, V-6, Auto, AC **\$6,990**



96 Chevy Tahoe LS 350 V8, Auto, AC, Barn Drs., 77,411 Miles **\$15,900**



95 Ford F250 Ex Cab, 5.8 V-8, 5 Speed, AC, Long Bed, 113,208 Miles **\$10,900**



95 Ford F350 Bucket Truck, 460 V-8, 5 Speed, AC, 85,236 Miles **\$13,900**



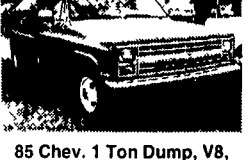
85 Chev. 1 Ton Dump, V8, 4 Speed, 90,107 Miles **\$7,990**



94 Ford F150, V8, Auto, AC, 133,000 Miles **\$4,990**



93 Toyota Land Cruiser, 4x4, Leather, Sun Roof, 99,000 Miles **\$14,900**



73 Office Trailer, 8'x28', Heat & AC **\$2,250**

**WILLIAM H. WESSELS  
USED CARS**

811 Route 15 Dillsburg, PA  
1-800-440-4433 1-717-432-2918  
Notary Public - Temporary Tags

**CHEVROLET**

**GMC**

**Sutliff**

**GM PARTS**

**GENUINE GM PARTS FOR ALL GM VEHICLES  
800-932-0284**

**Free Delivery Routes In  
12 Counties In Central PA  
Call For Specifics**

**25 PARTS PROFESSIONALS TO SERVE YOU  
ENGINES - TRANSMISSIONS  
A.C. DELCO - SHEET METAL  
ALL IN STOCK AND PRICED RIGHT  
IF YOU NEED GM PARTS  
WE'VE GOT WHAT YOU NEED**

**SUTLIFF GM PARTS**

13th & Paxton  
Harrisburg, PA



We Want Your Business

**A GM Goodwrench Service Plus Dealer**

*The Plus means better.*

**CHEVY TRUCK**

**OLDS**

**BUICK**

**CADILLAC**

**PONTIAC**



Trailer Financing Available or

**Truck & Trailer Parts & Accessories**  
Distributor

**HOURS**  
Mon, Tues.  
Wed & Fri 8-5,  
Thurs 8-8, Sat 8-2

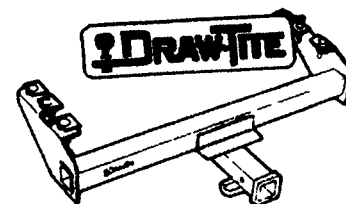
7760 Allentown Blvd.  
Harrisburg 717-671-9115

6250 Carlisle Pike  
Mechanicsburg 717-795-9116

Trailer Repairs & Fabrication 717-795-9902  
Orders 800-622-7003



**WORTHINGTON TRAILERS**  
Snowmobile Trailer w/Lift Top All Aluminum w/Front Acc Door



**ALL CLASS OF HITCHES**

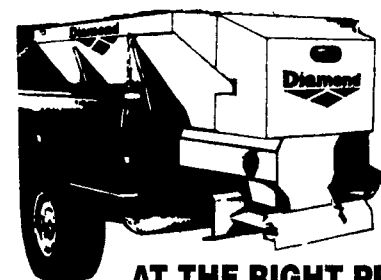
**A.R.E. TRUCK CAP & LIDS • TRUCK ACCESSORIES**



**SNOW PLOWS by Meyer**

- ◆ Trip Edge Design
- ◆ More Pronounced Blade Curve
- ◆ Lift Unit - Electric Hydraulic
- ◆ Pull-Away™ Mounting & Easy Hitch Attaching System
- ◆ Diamond Snow Plows Meet Your Demand
- ◆ All Sizes To Fit The Following Vehicles:  
Sub Compact SUVs & Pickups  
Mid Size SUVs & Pickups  
Full Size SUVs, Pickups, Commercial

**DIAMOND HAS SPREADERS...**



**...AT THE RIGHT PRICE**

- ◆ Self Contained
- ◆ 2 Yard Capacity
- ◆ 8' Length for Heavy Duty Pickups
- ◆ Variety of Options
- ◆ In Cab Electric Speed Control
- ◆ 10.5 HP Commercial Grade Briggs & Stratton Gas Engine
- ◆ All Sizes

**DRAW-TITE HITCH & TOWING PRODUCTS**

**BEDLINERS • SNOWPLOWS**

Authorized Sales & Service

**TRAILER PARTS & ACCESSORIES • TRAILER INSPECTION & SERVICE**