

Mercer Livestock Auction
 Mercer, Pa.
 October 9, 2001
 Report Supplied By USDA
 CATTLE 404...(PDA).
 STEERS. Choice 2-3 1200-1500 lbs 66.75-70.75, few 1500-1655 lbs 55.75-62.50, Select 1-3 58.75-66.00, Standard 1-2 50.00-59.25.

HOLSTEIN STEERS Choice 2-3 1100-1525 lbs 57.25-60.60, few Select 1-2 54.00-56.00.

HEIFERS: few High Choice and Prime 2-4 1125-1150 lbs 67.00-68.50, Choice 2-4 1000-1325 lbs 64.00-68.00, few Select 1-3 60.00-64.00, few Standard 1-2 47.00-56.50.

COWS: Breakers 75-80% lean 40.00-43.50, Boners 80-85% lean 37.00-40.00, Lean 85-90% lean 33.00-38.00. Shells down to 25.00.

BULLOCKS: few Select 1-3 1085-1115 lbs 49.75-51.75.

BULLS: few Yield Grade 1 1525-1750 lbs 48.00-49.25, Yield Grade 2 900-2395 lbs 39.50-47.75, one down to 30.00.

FEEDER CATTLE: STEERS: Medium and Large 1 375-600 lbs 76.00-85.00, 600-825 lbs 63.00-72.00, Medium 2 350-600 lbs 52.00-76.00; HEIFERS: Medium 1 300-500 lbs 65.00-75.00, Large 1 500-600 lbs 77.50-84.00, Medium 2 300-500 lbs 52.00-55.00, 500-700 lbs 48.00-69.00; BULLS: Medium 1 325-525 lbs 68.00-82.00, 525-625 lbs 63.00-82.00, Medium 2 300-500 lbs 60.00-68.00, 625-775 lbs 50.00-59.00.

CALVES 63...VEALERS: Standard and Good 70-100 lbs 20.00-45.00, Utility 50-75 lbs 10.00-20.00.

FARM CALVES: No 1 Holstein bulls 90-115 lbs 90.00-110.00, one 115.00, No 2 80-110 lbs 60.00-90.00; few No 1 Holstein heifers 90-110 lbs 45.00-47.50, few No 2 75-90 lbs 130.00-390.00.

Few beef type bulls and heifers 90-110 lbs 100.00-110.00.

HOGS 36...BARROWS AND GILTS:

49-54% lean 230-260 lbs 44.00-44.85, 45-50% lean 240-260 lbs 40.00-41.50.
 SOWS: few 1-3 450-615 lbs 34.00-37.00.

BOARS. few 455-740 lbs 19.00-21.25, one 280 lbs 28.00.

FEEDER PIGS 0.. NO MARKET TEST!

SHEEP 4...NO MARKET TEST!

GOATS 7.. NO MARKET TEST!

West Virginia Feeder Cattle

Charleston, W. Va.
 October 9, 2001

Report Supplied By USDA

FEEDER CATTLE: Regular Sales from Greenbrier Valley, Parkersburg and Weston, W. Va., Oct. 5 and 6. Prices per hundredweight

STEERS: 489 head. Med. and Lge. 1: 200-300 lb 94-105.00, 300-400 lb 98-108.00; 400-500 lb 83-99.00; 500-600 lb 76-88.00; 600-700 lb 75-87.00; 700-800 lb 70-84.00; 800-900 lb 62-79.00; 900-1000 lb 55-67.00; 1000-1200 lb 52.50-57.50 Med. and Lge. 2. 200-300 lb 95-105.00, 300-400 lb 85-92.00; 400-500 lb 84-100.00; 500-600 lb 80-86.00; 600-700 lb 75-83.00; 700-800 lb 70-79.00. Small 1-2: 200-300 lb 91-105.00; 300-400 lb 80-85.00; 400-500 lb 80-90.00; 500-600 lb 72-80.00, 600-700 lb 62-74.00; 700-800 lb 58-60.00; 800-900 lb 53.00.

HEIFERS. 559 head. Med. and Lge. 1. 200-300 lb 80-84.00, 300-400 lb 77-90.00; 400-500 lb 76-84.00, 500-600 lb 70-78.00, 700-800 lb 62-74.00; 800-900 lb 53-68.00, 900-1000 lb 43-60.00 Med and Lge 2 200-300 lb 75-80.00, 300-400 lb 75-86.00, 400-500 lb 68.50-72.00; 500-600 lb 60-71.00; 600-700 lb 60-68.00; 700-800 lb 67.00. Small 1-2: 200-300 lb 71-82.50; 300-400 lb 61-72.50, 400-500 lb 65-71.50, 500-600 lb 57.50-66.00, 600-700 lb 54-64.00, 700-800 lb 54-64.00

BULLS 219 head Med and Lge 1 200-300 lb 94-105.00, 300-400 lb 101-107.00 400-500 lb 81.94.00 500-600 lb

78-85.00, 600-700 lb 62-73.00, 700-800 lb 59-67.00, 800-900 lb 43-58.00 Med and Lge 2 300-400 lb 83.00 400-500 lb 84.00, 500-600 lb 73-75.00, 600-700 lb 57-65.00, 800-1000 lb 48.50-49.00 Small 1-2 200-300 lb 75.50-87.50, 300-400 lb 78-81.00, 400-500 lb 75-80.00, 500-600 lb 55-65.00, 600-700 lb 50-58.00, 700-800 lb 45-58.00; 800-1000 lb 43.00

New Holland Special Feeder Cattle Sale

New Holland, Pa.
 October 9, 2001

Report Supplied By USDA

FEEDER CATTLE 590 head A good crowd of buyers were on hand for the special feeder cattle sale held on Friday Trading was active, with good demand for steers weighing over 600 lbs The next feeder cattle sale will be on October 26, 2001 at 6:00 p.m.

FEEDER STEERS: Medium and Large 1: few 450-500 lbs 92.00-94.00, lot 581 lbs 89.50, 600-650 lbs 81.00-81.50, few 750-800 lbs 74.00-78.00; 850-950 lbs 72.50-79.50. Medium and Large 2 600-700 lbs 66.50-74.50; 700-800 lbs 68.50-72.00; 800-950 lbs 62.00-67.00.

FEEDER HOLSTEIN STEERS Large 2 600-675 lbs 70.00-73.50, 700-775 lbs 70.00-71.00, 800-900 lbs 68.00-69.50.

FEEDER HEIFERS: Medium and Large 1: couple 513 lbs 70.00; 600-700 lbs 68.00-70.00; few 740 lbs 64.50. Medium and Large 2 400-450 lbs 63.50-75.00, 550-600 lbs 60.00-62.00; 600-700 lbs 60.00-67.00.

BUY, SELL, TRADE OR RENT THROUGH THE CLASSIFIED ADS IN Lancaster Farming

PHONE

717-626-1164

OR

717-394-3047

Five-Area Weekly Average Direct Slaughter Cattle

St. Joseph, Mo., Oct 8, 2001- USDA Market News Service

Sales in Texas/Oklahoma; Kansas; Nebraska;

Colorado; and Iowa/Minnesota Feedlots for

Week Ending Sunday, October 7, 2001

Confirmed Sales. 148,182 Week Ago: 200,373

LIVE BASIS SALES:

SLAUGHTER STEERS

	Head Count	Weight Range	Price Range	Avg. Weight	Avg. Price
Over 80% Choice	4,611	762-1,600	64.00-68.00	1,314	65.92
65-80% Choice	4,391	822-1,600	65.00-68.00	1,330	66.24
35-65% Choice	32,671	900-1,600	63.00-68.50	1,263	67.30
1-35% Choice	5,709	1,025-1,525	66.00-68.25	1,285	67.46

SLAUGHTER HEIFERS:

Over 80% Choice	2,206	950-1,475	64.00-68.50	1,192	65.70
65-80% Choice	4,451	930-1,440	65.00-68.50	1,197	66.68
35-65% Choice	33,025	850-1,485	65.00-68.50	1,140	67.36
1-35% Choice	1,920	575-1,330	66.00-68.00	1,132	67.35

DRESSED BASIS SALES:

SLAUGHTER STEERS:

Over 80% Choice	2,551	612-1,012	103.00-108.00	866	105.79
65-80% Choice	16,042	593-1,060	103.00-108.00	849	105.80
35-65% Choice	8,052	581-1,041	102.00-108.00	847	106.10
1-35% Choice	90	597- 747	106.00-106.00	672	106.00

SLAUGHTER HEIFERS:

Over 80% Choice	366	530- 956	103.00-108.00	738	105.83
65-80% Choice	9,098	472-1,014	102.00-108.00	755	106.28
35-65% Choice	9,556	563- 960	103.00-108.00	737	106.96
1-35% Choice					

Weekly Accumulated Weighted Averages (Beef Breeds):

	Head Count	Avg. Weight	Avg. Price
Live Steer	47,384	1,278.0	67.09
Live Heifer	41,602	1,148.5	67.20
Dressed Steer	26,735	849.5	105.89
Dressed Heifer	19,021	745.7	106.61

Week Ago Weighted Averages:

Live Steer	58,572	1,277.7	66.21
Live Heifer	47,880	1,146.4	66.16
Dressed Steer	29,537	835.3	109.05
Dressed Heifer	30,277	747.7	106.12

Ulti-Mat™
All Rubber Mattress Installation
 Continuous Cow Comfort -
THE ONLY All Rubber Mattress
 that recovers to original shape
 after cow movement.



Absolutely The Ultimate in Cow Comfort

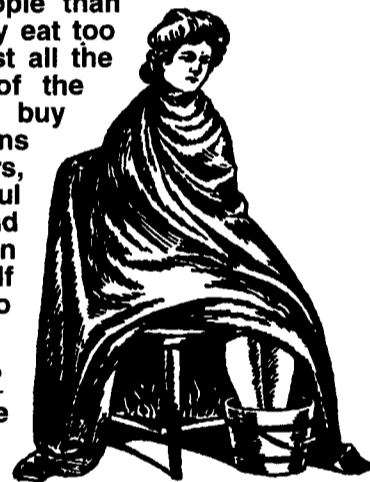
- Designed by farmers
- Inert does not promote fungus or bacterial growth
- 3" nominal thickness
- Water and acid resistant polyurethane binder
- 3 year warranty

★ Call For References ★
 Installation & Financing Available

ZARTMAN FARMS
 820 Hilltop Rd., Ephrata, PA 17522
717-733-1050
 E-mail: www.zartmanfarms@dejazzd.com

Why Be Sick And Tired?

America has more sick people than most countries, because they eat too much cooked food which lost all the enzymes and up to 80% of the nutrition. Most food you buy contains harmful toxins because they use weed killers, insecticides and many harmful chemicals in growing it, and then more chemicals in processing to increase shelf life. But there is a solution to the problem.



Be Healthy And Energetic?

May doctors and people are now using a new and safer way to remove toxins and poisons from the body, clean out the arteries and develop a strong immune system so it can fight off diseases with amazing results, without any drugs. This program supplies the immune system with killer cells, memory and suppresser cells activity and training, which is like manpower and equipment to any army. It provides the immune system with all natural, organically grown fruit, grain and vegetables" which is like good food and ammunition to an army.

Over 40 million dollars were spent in research, and over 3000 sheets of scientific documented studies by doctors supports many positive clinical experiences, and backs up the patented process in providing proven products. The cost is considerable less than drugs, chelation, radiation, chemotherapy and operations. It does NOT interfere with medication. There are now viruses that can not be stopped with antibiotics, but these all natural products are producing excellent results with supervision from doctors.

Over 3000 Doctors Have Already Switched

They have switched from drugs to alternative medicine in order to help people recover from cancer, heart attacks, arthritis diabetes, lupus, fibromyalgia, allergies, fatigue and many other health problems without any side effects. We make no health claims. We work with doctors in giving the body all natural food grade products it needs to heal itself. There is also a Prevention Program to help you from getting sick. "An ounce of prevention costs far less, and is so much better than a pound of cure" (doctor and hospital bills). Which would you prefer, \$149 a year to help prevent a heart attack, or a \$50,000 by pass operation? The choice is yours. Let us try to help you prevent health problems.

For more information contact:

UNI Health Products, Inc.

520 Prescott Rd. Lebanon, Pa. 17042

Phone 717-866-4555, E-mail UNI@nbn.net

Inquire for distributor opportunities

Incredible Prices !!!

UP TO 60% OFF
SUPER HEAVY STEEL
 ■ Equipment Storage!
 ■ Workshops!



FAST AND SIMPLE TO ERECT!!
NO CRANE NEEDED!!

AVAILABLE MODELS
 30 x 50 (2 LEFT) 40 x 64 (3 LEFT)
 45 x 80 (2 LEFT) 52 x 100 (1 LEFT)
 55 x 120 (2 LEFT)

EXCELLENT FOR HAY AND GRAIN STORAGE

800/825-5059

