

## PUBLIC AUCTION

**MON., OCT. 8, 2001**  
@ 12:00 PM

Murry Auction Emporium  
23 N Water Street / Lititz, PA 17543  
717 626-2636

Featuring large clean lot of quality sets (wrenches, screwdrivers, etc.) of hand tools, tool bench and other related items. 3818 McCulloch Chain Saw used 5 hrs. Also Variety of nice small power tools.

Inventory of local craftsman of tinware (nice Xmas gifts), general household items along with collectibles, furniture, appliances, decorator items, outside box lots and other items of value not mentioned.

There will be an Antique Auction on November 19, 2001 @ 8:30 AM. Consignment is being accepted.

10% Buyer Premium / Visa & Master Card

**Elmer Murry Auctions, Inc.**  
-AU-648-L-

Professional Auctioneer, Appraiser and Advisor  
Our Services Are Not a Sideline  
(717) 626-2636 Fax (717) 627-6757

## PUBLIC AUCTION

### BRICK RANCHER - 2 CAR GAR. - 3.38 ACRES

PERSONAL PROP. - UTILITY BLDG. - FARMALL  
SUPER A TRACTOR

**THURS., OCT. 18, 2001**  
2 PM - REAL ESTATE 4 PM

952 State Rt 501 South (corner Rt 501 & Mastle Rd.) From Brickerville take Rt 501 N 2 1/2 miles to property on right or 3 miles South of Schaefferstown to property on left Heidelberg Twp Custom built "one owner" brick rancher 1 862 SF finished area on 1st floor & 900 SF finished lower level Country kitchen family & living rms., 3 bdrms., 1 1/2 baths, 1st floor laundry lower level rec/fam rm Oil heat 14'x24' storage bldg country 3 acre lot w/spring fed pond

Spacious one level home For color brochure, land plotting & financing call Auctioneers (717) 733-1006 Inspection by Appt or Open House Sats., Sept 29 Oct 6 & 13 from 1 to 4 PM

**MICHAEL Z. &  
MABEL S. HORNING**  
(717) 949-2487

Auction By:  
Randal V. Kline, Roy E. Good, Jr.,  
Keith Snyder, Auctioneers  
(717) 733-1006

Lic. #499L - #2116L - #3433



## Public Auction Register

Closing Date Monday 5:00 P.M.

of each week's publication

Internet Sale Register will be updated  
every Sat. at 2:23 P.M.

### ATTENTION AUCTIONEERS

All sales register info needs complete address,  
street, town, county & state.



## PUBLIC AUCTION

of Household Goods, Antiques,  
Tools & Riding Mower

**Wed., Oct. 10, 2001**

Sale at 5:30 P.M.

Located at 3424 West Newport Rd. Interchange Lanc Co PA  
One mile North of Intercourse on Rt 772

**Furniture:** Hippelwhite Style Chest of Drawers, Dresser, 2 Night Stands, School Desk, Full Bed, Single Bed Entertainment Center, Gooseneck Rocker, Pine Rocker, Day Bed, Sewing Table, Chest of Drawers, Lawn Furniture Records from 40's, 10 TV Mirror Display Shelf, Christmas Items, Utility Cabinets, Toys, Small Appliances, Humidifier, Oscillating Fan on Stand, 30 Cup Coffee Percolator, Typewriter, Bedding, Blankets, Throw Rugs, Oriental Type Rugs - 5 1/2'x7 1/2', 5 1/2'x7', 5'x7', **Some Glassware** - Corolle Dinnerware, Cups, Plates, Canning Jars

**Lawn Supplies & Tools:** Ranch King Riding Mower, 7 Speed 12H P. 38" Cut w/Grass Catcher, Garden Tools, Craftsman Wet & Dry Vac, Craftsman Chest on Chest, Craftsman Tool Boxes, All kinds of Hand Tools, Organizers, Work Bench w/2 Wood Vises, Wall Display Cabinet, Miter Box, Soldering Iron, Drills, Elect Tools, 2 Ton Floor Jack, Bag Wagon, Car Ramps, American Flyer Sled, 16' Dahon Folding Bike, many other items not mentioned

TERMS BY:

**CHARLOTTE M. OHMER**

Aucts Robert J. Ohmer (deceased)  
Robert E., Jeffrey R & Michael L Martin 656-7770  
AU000580L Randall L Ranck

No Out of State Checks Refreshments Available

SAT OCT 27 - 8:30AM, 11AM  
Horses Middleburg Livestock  
Auction PO Box 185 Middleburg,  
Pa Clarence Shirk 717-656-  
8793, John Shirk 570-837-9935

SAT OCT 27- 9AM Real Estate,  
1781 Emerald Ave., York Pa F  
Dolores Townsend Owner Ken-  
neth Keeny AU2797L 717-993-  
3448 Marlette Thomas AU3251L  
Paul Miller AA2823L

SAT OCT 27 - 9AM Real estate  
antiques & collectibles, household  
goods At 789 Church St, Millers  
burg Pa Mrs Grace Weaver  
owner David Deibler, Ed Shoop  
aucts 362-2942 AU001213-L,  
AU000842-L

SAT OCT 27 9AM Estate auc-  
tion along Rt 25 midway between  
Hegins and Fountain in Western  
Schuylkill Co Pa 14 miles west  
of Pottsville and 3 miles west of I  
81 Estate of Gloria H Felty Deb-  
ert Auct AU1599 L 570 425 2256

SAT OCT 27 9AM Take 81 N to  
exit 170B take 309N to rt 29  
right onto Keelersburg Rd 4 mile  
to sale site For Stuard & Virginia  
Vosburg Wolgemuth Auction  
Service #1534 717 665 6684

SAT OCT 27 - 9AM Real Estate  
at 11am Personal Property &  
Antiques 44 McCormick Rd  
Robeson Twp Berks Co Terms  
by Clar L Troop Estate Horning  
Farm Agency Inc 610-286 5183

SAT OCT 27 9:30AM Farm  
auction tractors & skidloaders  
hay equip misc equip milking  
equip shop tools hay From  
Frederick take Rt 26 E to Liber-  
tytown continue on 267 E to  
side of Libertytown turn right  
onto Dollyhyde Rd 2.1 mi to  
farm on left White Oak Farm  
owners Wolfe Aucts 800-443  
3580

SAT OCT 27 - 10AM 248 Acres  
3 Todd Co Trenton Area near  
Ky-Tn State line Heirs of Wm Bill  
Peters Owners Turner & Associ-  
ates 270 887 9977

SAT OCT 27 10AM Belleville  
livestock market Belleville Pa  
Fall Heifer Sale Eugene Glick  
717 667 2703

SAT OCT 27 10AM Passenger  
vehicles Trucks Construction &  
arm Machinery 1450 New York  
Ave Wilmington DE 302-573  
005 Nationwide Auction Sys

## 9+ Acre Farmette being sold at

## PUBLIC AUCTION

**SAT., OCT. 13, 2001**

9:00 A.M.

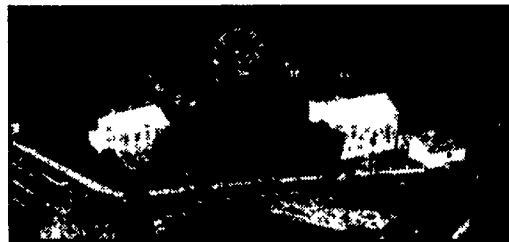
PERSONAL PROPERTY

12:00 P.M. - REAL ESTATE

(Corner of Rt. 343 and Greble Rd.)

603 Greble Road, Lebanon, PA 17046

Bethel Twp., Lebanon County, PA



**REAL ESTATE:** Consists of 9+ acres. About 7 acres is cropland in a high state of cultivation currently planted in corn. Improvements therein consist of a traditional 2-1/2 story brick farmhouse with 3 bedrooms, 1-1/2 baths, living room, dining room, kitchen, den, enclosed out-porch, oil warm-air furnace, full basement and attic, 2-car detached garage, barn and various outbuildings, unique old stone root cellar cave, drilled well, on-site septic. Zoned agricultural, this property has over 700 ft. of hard road frontage. This property adjoins Fireman's Park.

**INSPECTION:** By calling Auctioneer

**TERMS:** 10% down day of auction, balance due in 45 days at Final Settlement.

**PERSONAL PROPERTY:** Furniture - 4 decorated plank seat chairs, Victorian marble top wash stand, slant top desk china closet, oak cane seated arm chair, Dunken Fife dining rm suite, curved front painted dresser, cedar chest, Waterfall bedroom suite, early rocker, cane seated porch rockers, kitchen table w/chairs, drop leaf table, Victorian living rm suite, sewing machines, old wooden high chair, television, modern corner china closet, maple dressers, porch benches. **GLASSWARE:** Fine china-Green depression glass, carnival glass, Halls cookie jar, Halls china bowls, cut glass, pressed glass, old glass candy containers, peanut butter glasses, milk glass items. **ANTIQUES AND COLLECTIBLES:** Old tin toys, Lucky Strike purse, large piggy bank, Gone with the Wind lamp, old quilts, pitcher and bowl set, crazy quilt tops, old-metal banks, old material, old cook-books, decorated Hershey milk can, old fashioned Coca Cola cooler, many figurines, large salt and pepper collection, St. Lawrence and Wengerts milk boxes. **HOUSEHOLD:** Microwave, lifetime cookware, floor lamps, baking pans, flatware, everyday dishes, foot locker, punch bowl set, old Christmas decorations. **TOOLS:** Shovels, potato fork, hand tools. Many more items too numerous to mention.

**CONDITIONS:** By Shirley Smith, POA for Ellen Ream.

**ATTORNEY:** John Zimmerman

AUCTION CONDUCTED BY:  
**NELSON L. EBERSOLE AUCTIONEER**  
LICENSE# - AU-001307  
PHONE (717) 867-5221  
FAX (717) 867-5606  
30 WEST MAIN STREET  
ANNVILLE, PA 17003

## PUBLIC AUCTION

Complete Liquidation of  
Gus Farm Equip.

Former MM, White, MF, Dealer

2191 Seven Valleys Rd., Seven Valleys,  
York County, PA

**Sat., Oct. 13, 2001 8:30 AM**

**Dir:** From Rt. 30 West of York Take Rt. 616 S 4 miles, turn right auction on left. Watch for signs.  
**11:30 AM Real Estate 11:30 AM**

3 4 acres in North Codorus Twp., York County, improved w/frame showroom/ office & metal garage/ workshop, lot is fenced, building has propane heat, showroom is an cond., on site well & septic.

**Terms:** 10% down day of auction balance due in 45 days. Shown by appt 717-428-1967 717-225-6491.

### Tractors Equipment Trucks Tools Adv.

**Tractor:** Oliver 1550 Gas Industrial w/Loader & Rear Fork Lift

**Equipment:** (2) M.F 510 Diesel Combines (1 Good & 1 Parts), M.F 44-4 Row Corn Head & Parts, Wagner Loader, Quik-Tach Loader Fits M.F Manure Bucket, Sauder Model-D Loader, Farmall A Plow, N.I Flail Spreader, N.I 6' Flail Mower, Oliver 3 BTM Trailer Plow, 14' Transport Harrow, 2 Gang Mowers, GT370 Grain Dryer, N.H. Baler, N.I PTO Rake, N.I Spreader, AC 333 6x30 Air Planter, 3 Pt. 2 Row Planter, I.H Grain Drill w/Fertilizer, 3 Pt Dearborn Blade, Haben Sickle for Riding Tractor, M.F 360-300 Series Mower Deck, M.F. 1023 & M.F. 1231 Mower Decks, M.F 231 Roll Bar, 6' Blade, Ariens Emperor Mower w/Bagger

**Trucks & Trailer:** 1981 White Freightliner Truck Tractor, 1983 Ford Custom 350 - 1 to N. Truck, Axle Flat Bed Trailer, Truck Bed Tool Rack.

**Shop Equip. & Tools:** Waste Oil Burner Unit, Air Compressor, Hyd Press, Power hacksaw, Portable Band Saw, 400 & 600 AMP Lincoln Welders, Parts Washer, Shop Hoist, Drill Press, Pedestal Grinder, 3 Battery Chargers, Elec. Drills, Grinder, Knife Grinder, Riveter, Work Benches & Vises Tool Boxes, Hand Tools, Hyd. Bottle Jacks, Welding Rods, Hyd. Testers, Hyd. Hose Making Machine & Fittings, Specialty MF & White Service Tools, Sleeve Puller, Fuel Oil Tanks 600' of 39" High Page Fencing, Pallets of Flat Angle Iron.

**Parts:** MF Head & Cranks, Many MF Parts of all Descriptions White, Moline, MF-Fox Parts: Plow Parts, Generators, Starters, Hyd. Valves, Injection Pumps, Top Links, PTO Parts, Mower Blades 3 Pt. hitch, Final Drive, Wide Front, White Diesel Engine, (2) 354 Perkins Diesel Engines, 6 Cyl. Diesel Motor.

**Adv.:** Large White & MF Signs, Microfish & Cards, Tech Parts Books, Binders, Sales Lit., MF Banners, Videos, Office Equipment & Adj Shelving, Time Clock, Etc

**Terms:** Cash or Good Check

SELLER:

**GUS FARM EQUIP. INC.**

Rentzel's Auction Service  
Emigsville, Pa 717-764-6412  
Blaine Rentzel AU 761-L  
Todd Hatterer AU 3440-L  
Dave Conley AU 3269-L

## RAYMOND R. (ANDY) GUEST JR. -ESTATE AUCTION-

TRACTORS - TRUCKS - FARM & HAY EQUIPMENT  
2 GOLF COURSE MOWERS & OTHER LAWN EQPT.

- ALFALFA & GRASS HAY -

1940s BOYER WILLYS JEEP FIRE TRUCK - PUMPER

**SAT., OCT. 13 @ 10:30 AM**

ROCK HILL FARM - WARREN COUNTY, VA

**DIRECTIONS:** Travel Rt. 522 4 miles north from Front Royal, VA -OR- Rt. 522 10.6 miles South from Winchester, VA. Turn East on Fairgrounds Rd. and proceed 3 miles. Turn North on Milldale Rd. and proceed 2/10 mile. Turn East on Rock Hill Farm Rd. and proceed to Auction on Right. **NOTE:** Green barns on left are not Rock Hill Farm. Please do not enter this area.

**John Deere 5500 4x4 (73HP) diesel w/cab, AC, 2172 hrs., dual remotes - with Deere 540 Loader ... John Deere 4300 HST, 4x4 Diesel Tractors (27HP) w/60 hrs. and Category 1 3 pt. Hitch, John Deere 2940 (81 HP), Diesel Tractor w/dual remotes (4614 hrs.); Massey Ferguson 165 Diesel Tractor (51 HP) w/single remote and 6050 hours; New Holland 853 Round Baler (chain type), John Deere 1219 mower conditioner, 2 New Holland Rollabar Hay Rakes (#258 left) #260 right) & Rolling Drawbar for tandem hook up, N.H. 451 3 pt. sickle bar mower, Worksaver 3 pt. hydraulic bale moving arms, (2) 3 pt. forks, 4 bale spears, Bush Hog #2615 Legend Bat Wing Rotary Mower, cuts 15' (has been used very little); **Almost New Bush Hog T.D. 15 Bat Wing Finish Mower (cuts 15')**, other older Bush Hog Bat Wing Cutter (cuts approx. 18'); Land Pride 15-60 Light Duty 3 pt. Cutter, New Pequea (Mod. 85) Ground Driven Manure Spreader (8 ft.), Danhuser 3 pt. post hole digger w/down pressure attachment; Work Saver 3 pt. Heavy Duty (8 1/2") Post Driver, New Priefert Cattle Head Catch, Western Mfg. Co. 8'6" Hyd. angle Snow Blade and all mounting gear (good condition); J. Deere 10' Transport Disc., Brillion 14 Spout Drill/Cultipacker, M.F. 3 & 5 Bottom 3 pt. Plows, M.F. 3 pt. Subsoil Ripper, 15' Flat Bed Wagon.**

**TRUCKS & TRAILERS:** 1995 Ford XL 350 1 Ton Flatbed 4x4, 5 speed (OD), gas, AC, w/Deweze Flatbed w/#378 pick up bale arms & gooseneck trailer ball; 1973 Hanover tri-axle stock trailer w/27' bed - new floor & appears in good condition, 1993 Ford 150 4x4 Short Bed "Flare Side" pick-up 8 cyl., automatic, 51,260 miles - loaded... 1985 Ford 150 4x4, 6 cyl. automatic, 1974 Ford 3/4 ton P.U., V8 Automatic, Ford 700 Dump Truck - 9 ft. bed w/391/V8-Farm use; 1969 Dodge D500 Water Truck (farm use).

### -GOLF COURSE TURF & LAWN EQPT. -

Toro 7 Gang Reel Type Mower w/6 cyl. gas G.M. motor - cuts approx. 15' (used for Polo Field); Late Model Worthington - Jacobsen Mfg. Co. 6 Gang Reel Type Mower (cuts 11ft.) ground driven, almost new Bush Hog T.D. 15 Bat Wing Finish Mower (cuts approx. 15 ft.), come see this mower, it is essentially brand new. John Deere #180 Lawn Tractor/Mower, Old Ford 3 pt. 77" Hammermill Mower, New Fimco Elec. 25 gal. Spot Sprayer, 210 gal. Poly Water Tank, New John Deere (1128 DE) 28" Snow Blower w/Tecumseh Motor, almost new "Yardman" Rear Tine Tiller, Devilbliss 5000 Watt Elec. Gen, Homelite & Stihl Water Pumps, Husqvarna Chain Saw & More... Misc. Farm Fencing, Shop Items, Gates, Wood Stove, Anvil, 55 gal. Drum of Shell Rotella & Shell Donax Hyd. Fluid & More!

**HAY:** Alfalfa small bales - approx. 778 from Year 2001 & 2000; Alfalfa Lg. Round Bales approx. 77 from Year 2001 & 2000; Mixed Grass hay 20 Rolls from Year 2000.

**RARE:** 1940s Antique Willys (Boyer) Jeep Utility. Rebuilt by Boyer Fire Apparatus Co. to be a Fire Truck - Pumper w/P.T.O. (needs restoration). For Jeep Information Check http: www.film.queensu.ca/CJ3B/Fire/BoyerList/html

**TERMS:** All items sold as-is for Cash or Check w/Proper I.D. Few Lg. items may be subject to reasonable reserve. Announcements at auction takes precedence.

**Wm. B. WATKINS (VA.)**  
-AUCTIONEER-  
540-955-3606

ESTATE OF  
**RAYMOND R. GUEST, JR.**  
MARY SCOTT GUEST  
-EXECUTRIX-

-TELL A FRIEND ABOUT THIS AUCTION-