

Don Hershey Receives PennAg Industries Distinguished Service Award

HARRISBURG (Dauphin Co.) — Lancaster County's Donald C. Hershey received the 2001 Distinguished Service Award for Industry Accomplishments from PennAg Industries at its annual convention Sept. 16-18 at the Pocono Manor Inn and Golf Resort.

Presented annually by the association, the award is its highest acknowledgment of lifetime achievement in agribusiness.

Hershey has dedicated his life to the development of the poultry industry in Pennsylvania. Born in Lancaster County in 1936, he went to work on a crop and turkey farm in Washington Boro when he was 16. At the age of 19, an eastern states feed representative and poultry farmer hired him to farm and tend his layer flock near Millersville.

In 1957, 21 years old and recently married, Hershey moved to his own Manor Township farm to tend to layer chickens and to get a start in the egg production

business.

After many years of tending to his own layer and egg business, Hershey began to service and install equipment for other layer and broiler farms. He formed Hershey Equipment Company in 1964.

In 1973, Hershey Equipment Co. became the Big Dutchman distributor for the Mid-Atlantic region and, by 1977, it was the leader in Big Dutchman poultry equipment sales and service worldwide.

Hershey's company now employs more than 100 persons full time and contracts an additional 100 individuals that design and build operations for the largest egg, feed and grain producers nationwide. They are recognized in the poultry industry across the country for providing quality products and professional installation services.

Dr. Leach Honored For Poultry Research

Dr. Roland M. Leach, Jr., Penn State professor of poultry science, received the 2001 Distinguished Award for Non-Industry Accomplishments from PennAg Industries for his achievements that have benefited agribusiness.

Leach has an outstanding record of research accomplishments in poultry science spanning more than four decades. It all started for him at the age of seven when his grandfather, whose trade was farming, gave him a few chickens to start his own egg business.

Years later, while studying for his PhD. at Cornell University, Dr. Leach was captivated by the fact that minute quantities of trace elements could have major impacts on skeletal metabolism. This fascination has shaped his career.

Dr. Leach is a worldwide leader in the field of trace element metabolism. He is most widely recognized for having identified,

company a number of connective tissue and skeletal disorders.

Leach's findings have transcended species and are of tremendous relevance to both poultry and human diseases, such as arthritis and osteoporosis. He is one of the most highly respected scientists in his field and has gained worldwide recognition.

Adams Receives PennAg Past Presidents Award

Jim Adams, vice president and chief operating officer of Wenger Feeds, located in Rheems, received the 2001 Past Presidents Award from PennAg Industries for his time and devotion spent over the past year for the advancement of the association.

Adams' dedication as president has resulted in many accomplishments over the last year. A successful merger of the former

Ag Coalition with PennAg took place. Adams saw this as a positive move that strengthened a legislative voice and blended the best of the two groups. Also, the PennAg web site, a new service in 2001, continued to expand its usefulness to PennAg members, governmental personnel and the general public.

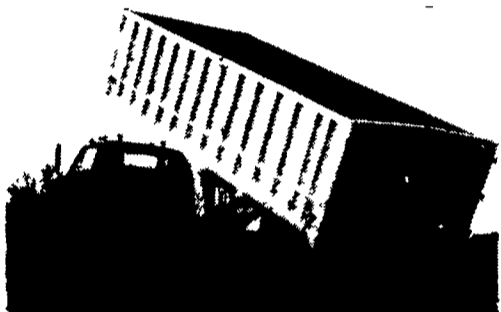
Pennsylvania agriculture is reaching global markets now more than ever before. Adams sees Pennsylvania agriculture's position in the global marketplace as one of the key factors of future success.

Adams will go on to become a member of PennAg's Past Presidents Council. Dennis Mullane, Taylor By-Products, Inc. located in Wyalusing, is the incoming PennAg president for 2002.

ALUMINUM GRAIN BODIES & ALUMINUM REPAIRS by



Rugged Strength



Dependable Performance

These ultra-light bodies are designed for strength through engineering, not strength with bulk. For example, a 16' grain body with tailgate and 48" sides weighs only 1490 lbs. complete. We'll build you any length or any side height up to 60"

Also available:

- Double swinging hay hauling tailgate
- Barn door type tailgate
- Slide out cattle chutes
- Diamond flooring
- Pull out panel tailgates
- Any size grain chute

HEWEY WELDING

1045 Wampler Rd. Lebanon, PA 17042 (717)867-5222

characterized and named a major skeletal disease of poultry known as tibial dyschondroplasia (TD).

TD costs the poultry industry million of dollars annually and Dr. Leach's research has provided valuable information on the functional changes that ac-

CORN TALK INCLUDES PMCGA NEWS



Corn Talk, the newsletter of the Pennsylvania Master Corn Growers Association (PMCGA), is included with the Oct 13 issue of Lancaster Farming. Scheduled are several features, including one on corn maze marketing, grower news from a drought year, seed placement strategies, and National Corn Growers Association (NCGA) and PMCGA news

NATURAL POND TREATMENT BARLEY STRAW Easy-To-Use Kit



- Suppresses Algae
- Environment Friendly
- Easy To Apply

Treats Up To 10,000 Sq Ft

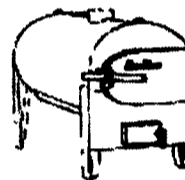
To Order: 1-888-422-5243

www.baleinabag.net

Aqua-Therm

Outside Wood Burning Furnace

- Clean
- Safe
- Easy
- Efficient



Buy the top of the line!

- *Stainless Steel Fire Box
- *Ash Removal Auger
- *15 Year Warranty
- *Thermostatically Controlled

Heat your house, shop and/or hot water with one unit

For more information,

call 717-838-9270 or 1-888-382-8170

Email: mkoowell@paonline.com



THANK YOU TO THE 2001 SOLANCO FAIR LIVESTOCK BUYERS



Grand Champion Steer: Ferguson and Hassler	\$4.20
Reserve Champion Steer: Musser's Market	\$1.40
Grand Champion Holstein Feeder Calf: First Union Bank	\$1.30
Reserve Champion Holstein Feeder Calf: Quarryville Agway	\$1.50
Grand Champion Lamb: Quarryville Family Dentistry	\$7.80
Reserve Champion Lamb: Tom & Kathie Kreider	\$8.00
Grand Champion Hog: Farmers First Bank	\$5.50
Reserve Champion Hog: The Advertiser	\$3.50

New Holland Sales Stables
Powl's Feed Service
Representative John Barley
Groff and Groff Lumber
Rhoads Energy
Central Manor Bakery and Grill
Nostalgia Oak Warehouse
Quality Stone and Vencer
Lancaster Ford Tractor
Quarryville Family
Chiropractic
Quarryville Herd Health
Meadow View Farm
Brown, McMullen & Wisse
Strasburg Market Basket
Drs Clark & Holloway
Gene Hnshuk
Tanglewood Manor

Hatfield Packing
Prevent Distributors
Herr and Leaman
Equipment
Bank of Lancaster County
James G Kreider
Hooper, Inc
Paul Risk Associates
Edgar M Herr, Inc
Spring Hill Farm
Milky Springs Dairy
Strickler's Barber Shop
Breezy Hollow Farm
National Bank of
Rising Sun
Southern End Self Storage
Jeff Peinhardt
Jeff Derr
Elaine Knight

Good's Livestock
Weaver Insurance
Welk-Crest Holsteins
Edgefield Farm
Huber Builders
Fulton Bank
Carl Killian Trucking
Triple H Equipment
Village Greens
Groffdale Farm
Welk Acres
Ruth Akers
Diane Neff
Mark Welk
Robert Kauffman
Risser Grain
Paul Welk

Thanks to: Larry Whyte, Robert E. Martin, Randy Ranck, Auctioneers
The Kirkwood Ag Auction
for providing auction services and equipment.

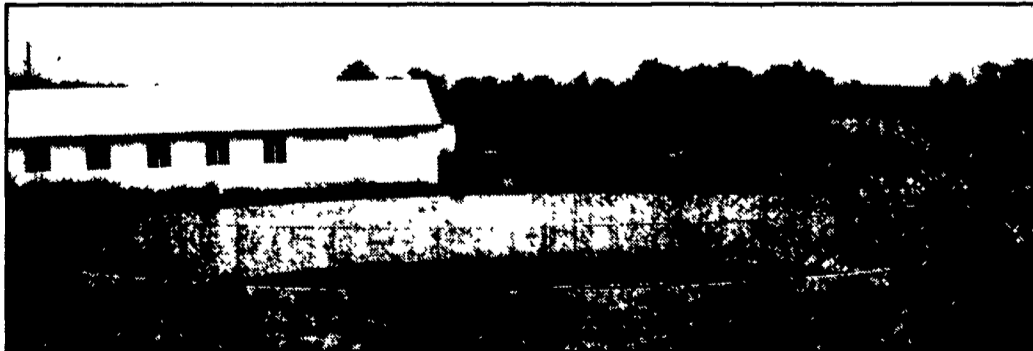
PRECISE CONCRETE WALLS, INC.

For All Your Concrete Walls And Construction Needs

Agriculture - Residential - Commercial

- Buildings • Basement • Floors
- Retaining Walls • Footer
- NRCS Approved Tank Designs
- All Types Of Flat Work

Specializing In Manure Storage
Round or Rectangular,
In-Ground or Above-Ground



Invest in concrete, quality work that will last a lifetime.

CALL FOR FREE ESTIMATES AND SEE HOW AFFORDABLE CONCRETE WALLS CAN BE

CONTACT ROY SENSENIG 717-355-0726

Authorized Dealer For Keystone Concrete Products

PRECISE CONCRETE WALLS, INC.

601 Overly Grove Rd., New Holland, PA 17557