

Expo Has Successful Debut

(Continued from Page A1)

busy" were heard throughout the two-day event conducted recently at the West End Fairgrounds, Gilbert.

So busy in fact was Carl Givler of Y-Knot Alpacas, Ore-field, that the cup of coffee and snack he wanted to enjoy after setting up their display area on the first morning was not to be had until late that afternoon. Wife, JoAnne, and daughter, Amy, conducted several demonstrations in the Alpaca obstacle course throughout the expo. JoAnne said she was amazed at the number of people that kept flowing past their area and all the questions and interest they had in their animals.

The Givler family who are members of the Alpaca Owners and Breeders Association started raising their Alpacas three years ago and raise their animals for breeding, pets, and fiber. There are two breeds of alpaca with the main difference being the type of fleece they produce. Y-Knot Alpacas had both the suri and huacaya on display for visitors to see. Alpacas are safe and pleasant to be around with their primary product being the soft and luxurious fleece that is sheared once a

year. You can usually raise about five to 10 alpacas per acre and they are environmentally friendly as their soft, padded feet cause little compaction to damage the terrain.

Boyd and Janet Smith of Kunkletown, breeders of poultry and Rambouillet sheep, presented several demonstrations on fancy fowl and raising sheep. Boyd said he was told that at least 60 people had been listening to him during one of his demonstrations, a fact he had not been aware of. Throughout the event crowds were frequently seen near the Smith's barred rock chickens and petite ducks listening as Smith explained the various aspects of raising poultry in the rural setting.

Presentations on traditional cattle breeds were done by Kevin Milz. Proudly representing the N.J. Polled Hereford Association was Benny Przewozny, 10, of B & B Farm, Chalfont, N.J. Przewozny, along with his parents, brought his cow-calf pair, DHF Suzanne J7 with her first calf, Duke, for display. Suzanne is the foundation of Przewozy's breeding herd with Duke intended to be next year's 4-H market steer project.

Przewozny is looking forward to showing his cattle at the 2003

National Junior Hereford Show at the Farm Complex, Harrisburg.

The Przewozny family was busy answering questions throughout the event as was Joe Keifer of JH Keifer Farm, Bangor, representing the Pennsylvania Angus Association with his registered Angus heifer.

Milz also presented demonstrations on special breed cattle along with Darcy Gannon of Mountain View Farm, Kunkletown. Gannon and husband, Boyd, brought two pair to pygmy zebu to the expo. The pygmy zebu originated in Sri Lanka and reach weights of 200-400 pounds at maturity with heights of 38-42 inches. Boyd said he prefers to use the pygmy zebu to train his cutting horses as they remain agile and ready to move due to their small size and nature. Domestic cattle tend to get lazy as they gain weight as well as becoming accustomed to the horses.

In addition to using the zebu to train their horses, Mountain View Farm has sold pairs to individuals who have sold their horses but still have pasture land that needed to be maintained. Pygmy zebu are ideal for small areas where the larger traditional cattle breeds may not be suitable.

The parade of horse breeds and horse and oxen driving demonstrations were popular events on both days.

Tom Mulea, with his assistant Shawn Beam, of Twin Pines Farm, Oxford, N.J., brought his 2,360-pound 6-year-old Red and White Holstein ox, Tom. Mulea



Tom Mulea, Oxford N.J., with his 2,360 pound ox, Tom, prior to his demonstration during the Small Farm and Rural Living Expo, Gilbert. Mulea does demonstrations at historical farms throughout the area and uses ox on his farm to perform daily chores.

uses his ox for logging and daily farm chores. Mulea also uses Tom for many demonstrations at historical farms throughout the area. He also brought a young team of oxen that are currently in training to the expo.

Also a part of the horse driving and breed demonstration was Craig Brodt, 15, of Saylorburg. Brodt is in the ninth grade in the Pleasant Valley school district. Brodt purchased his 4-year-old POA (Ponies of America) mare, DeeDee, this past February and has since trained her to ride and drive. Brodt has four POAs at home.

The driving demonstration included Hackney Ponies and an Arabian with the highlight being the pair of Percheron geldings of

Arminda Seese, Reeders. Bob and Bill, both 7, were purchased five years ago from Roger and Sandy Burger who were in the audience to cheer them on. Seese, assisted by Bernice Keiper, drove the pair pulling a wagon and later a snow-white carriage that is used in weddings. Seese has entered her horses in local fairs and recently entered a plowing contest where she was the only woman in the competition.

One of the most popular animal demonstrations was the herding Border Collies owned by Gene Sheninger of Wayside Farm, Boonton, N.J. Sheninger raises 130 sheep on 70 acres and uses the dogs regularly in herding his sheep. He also does extensive travel doing demonstrations with his dogs. Sheninger has competed in trial competitions along the east coast. The U.S. Border Collie Handlers Association (USBCHA), of which Sheninger belongs, is the organization that supports the U.S. National Finals, accumulating points for each dog throughout the show year. Only 150 dogs qualify to compete each year at the National Finals and Sheninger has qualified each year since 1990.

Land O'Lakes Establishes Fluid Milk Marketing Division

ARDEN HILLS, Minn. — Land O'Lakes, Inc. announced the establishment of a new Fluid Milk Marketing Division focused on enhancing the company's ability to efficiently serve its current fluid-milk customers, expanding the national cooperative's ability to serve new customers in the fluid-milk marketplace and delivering the full potential of Land O'Lakes milk-supply agreement with Dean Foods.

"This initiative reflects Land O'Lakes commitment, not only to participating in the fluid-milk industry, but also to establishing a strong presence and leadership role in better serving consolidating Fluid Bottling and Dairy manufacturing customers," said

Land O'Lakes President and Chief Executive Officer (CEO) John E. Gherty.

Gherty also announced that the Fluid Milk Marketing Division will be headquartered in Land O'Lakes Arden Hills, Minn. home office and led by Don Berg. Berg has been with Land O'Lakes for more than 30 years, including seven years as a dairy foods field services manager and 17 years as vice president for dairy foods procurement and membership.

Berg and the new division will also provide perspective and leadership in relation to federal milk marketing orders and pooling, as well as promote member interests in relation to national dairy policy, Gherty said.

All-American Eastern Elite Sale Tops At \$14,400

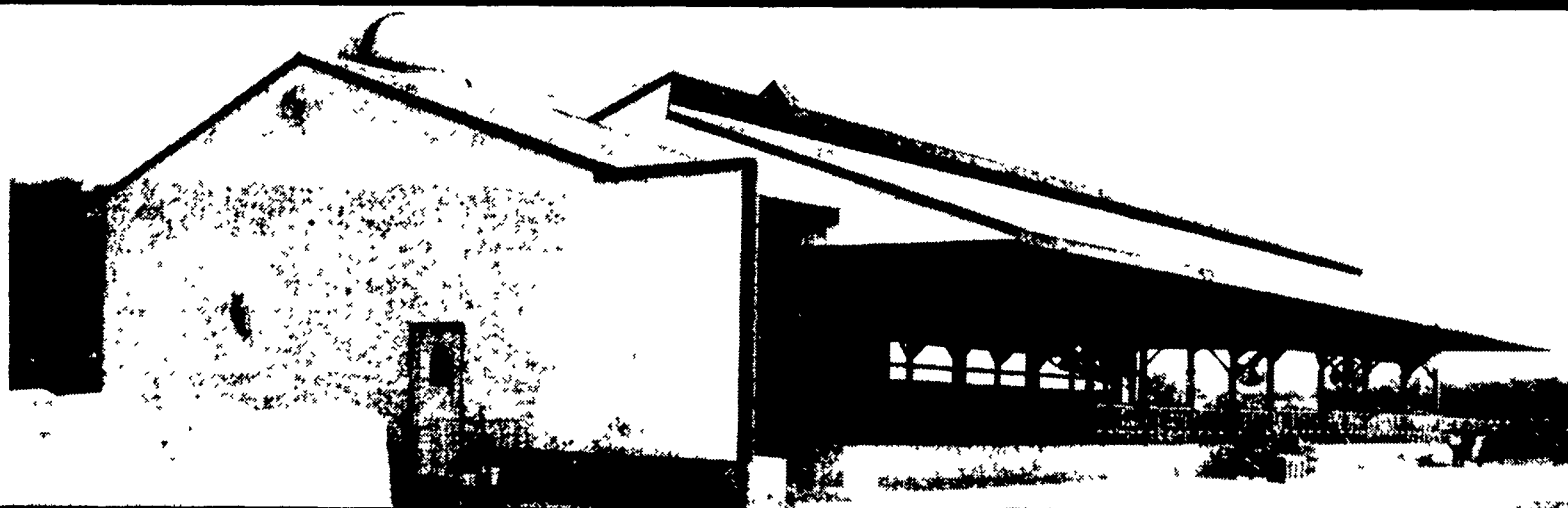
HARRISBURG (Dauphin Co.) — Seventy-eight lots were offered at the Eastern Elite Holstein Sale Sept. 26 during the All-American Dairy Show.

Sponsored by the Pennsylvania Holstein Association, the Eastern Elite Sale offered some of the best genetics in the Holstein breed for purchase by breeders. The sale averaged \$4,062.

Topping the sale with a selling price of \$14,400 was first choice of four pregnancies from Kent Vandyk and Mark Rueth of Jefferson, Wis., purchased by Pure Paradise Syndicate. The highest selling animal was Ladys-Manor Tawmy-ET, owned by Robert and Mary Smith of Monkton, Md. Plushanski Farms of Kutztown purchased "Tawmy" for \$12,500.

Mike and Heather Iager

for their new Heifer Barn and Storage Bay



35'x112'x12' Heifer Barn with 35'x16'x14' Storage Bay

Other Features:

• McDermitt supplied concrete • Galvanized Headlocks, Custom Fencing and Custom Gates from Norbco

KING CONSTRUCTION

601 Overly Grove Rd., New Holland, PA 17557

(717) 354-4740

Phil Van Lieu (Home) - (717) 259-9077

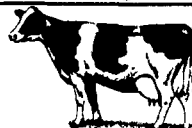
We build in PA, MD, DE & NJ



NORBCO
4754 State Rt. 233 P.O. Box 370 Westmoreland, NY 13490

315-853-3936

Barn Equipment for the Commercial Dairyman



MCDERMITT, INC.

TRANSIT MIXED CONCRETE & ASPHALT
SERVING: (MD) CARROLL & FREDERICK
(PA) ADAMS, YORK, FRANKLIN &
CUMBERLAND COUNTIES

DISPATCH: 800-635-4376 FAX: 717-334-1372

AGRICULTURAL LIME - \$3.00/TON