

Agricultural Education Loan Forgiveness Program Applications Available

HARRISBURG (Dauphin Co.) — Applications for the Agricultural Education Loan Forgiveness Program, benefiting agriculture and veterinary medicine graduates, are now available, said Rep. Thomas E. Armstrong (R-98).

The program, administered by the Pennsylvania Higher Education Assistance Agency (PHEAA), repays up to \$2,000 annually to borrowers of PHEAA-guaranteed student loans for each year the borrower is employed full time in an agri-

cultural-related field. It covers only PHEAA-guaranteed loans, excluding personal and commercial loans, and the borrower is allowed a lifetime maximum of \$10,000 in forgiveness payments. The application deadline is Nov. 16, 2001.

The Agricultural Education Loan Forgiveness Program was approved by the General Assembly and signed into law in 1992. Preference is given to all eligible renewal applicants. However, first-time applicants will be considered if funding is available. Applications are available by

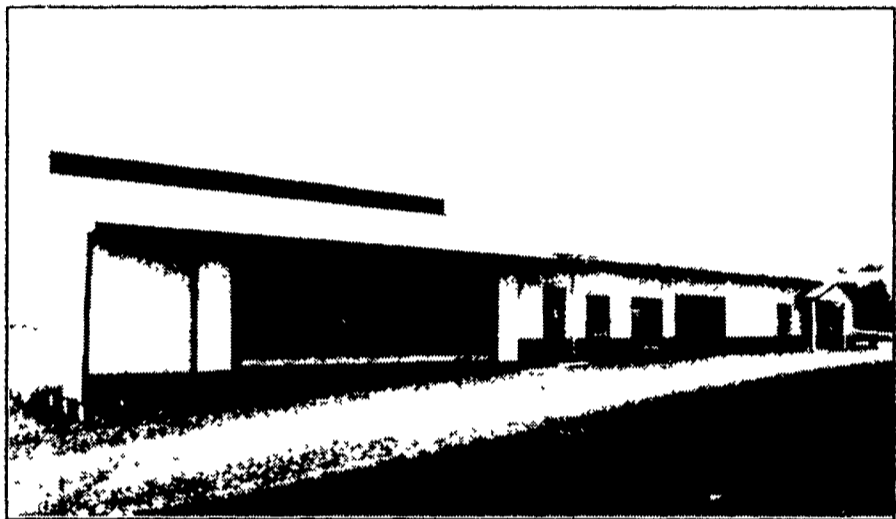
contacting Armstrong's district offices located at 430 Locust Street, Columbia, telephone (717) 684-5525, and 222 South Market Street, Elizabethtown, telephone (717) 367-5525. Additional information is also available at PHEAA's Web site, www.pheaa.org.

NEW FARM

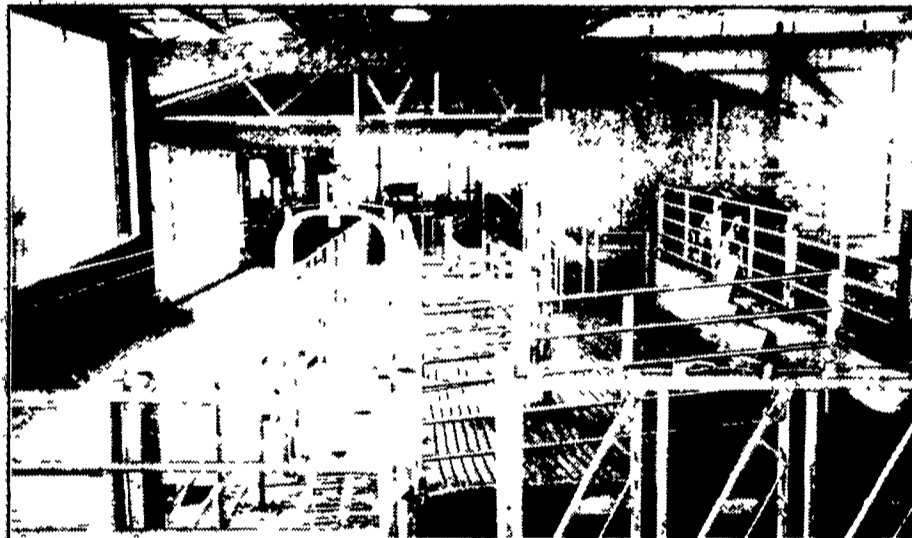
LY, CANTON, PA (BRADFORD CO.)

October 12, 10-2

Center Featuring a Westfalia • Surge Autorotor Parlor



unique special needs barn, observation area, slatted floor built by Triple H Construction, Ephrata, PA



SPECIAL FEATURES

- Keystone Concrete slatted floor
- Norbco stalls, gates, fencing, dump waterers
- North Brook Farms cow mattresses
- Jimmy Automatic Drive-thru Gate System
- Aerotech tunnel ventilation
- Mueller 5,000-6,000 gallon tanks with Energy Star cooling units
- Mueller plate cooler

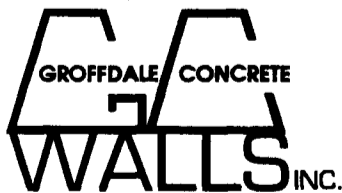


DIRECTIONS

Take Route 11-15 and 15 North to Route 14 North. In Canton, turn right on Route 414. Go two (2) miles to East Canton. Turn left on Glory Barn Road. Follow Glory Barn Road to Good View Farm. Farm is on the left.



477 East Farmersville Rd., New Holland, PA
(717) 355-2361



430 Concrete Ave., Leola, PA
717-656-2016



Rt. 422, One Mile East of Myerstown, PA

Ken Mansfield
1-800-431-7709
(erected 7 silos on farm)