

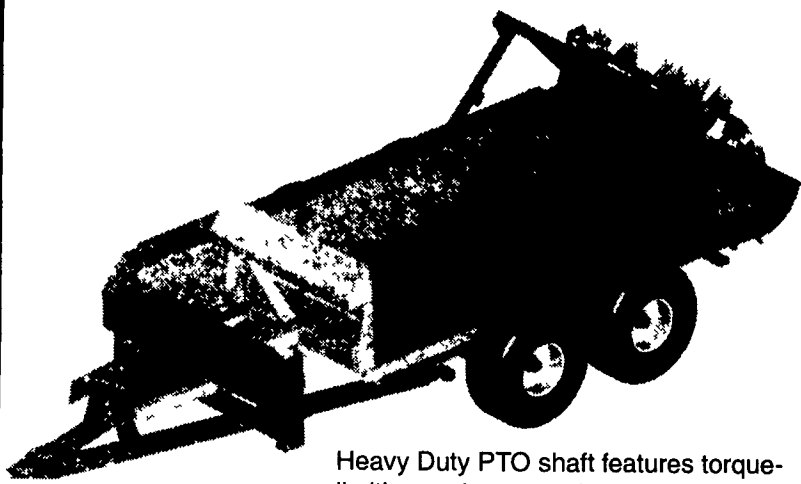
1 FARM EQUIPMENT

pikrite

providing tomorrow's technology

The new Hydra-Ram Spreader from Pik Rite, Inc. is a unique design that utilizes hydraulic cylinders to push the load off - as opposed to augers or apron chains. This machine has fewer moving parts; providing longer life and service.

**Call today for more information
1-800-306-4763
or e-mail ryan@pikrite.com**



Heavy Duty PTO shaft features torque-limiting and overrunning clutch.

**STANDBY POWER FOR YOUR FARM,
CONFINEMENT OPERATION, DAIRY,
GREENHOUSE, HOME,
OR IN THE FIELD**



HAS THE POWER

**STANDARD CEP PACKAGES
INCLUDE:**

- Engine alternator set on a steel sub-base
 - Automatic voltage regulator with integral voltage adjust
 - Automatic reset over-excitation protection and under-frequency compensation
 - Lead-acid battery, floor standing marine grade battery box and battery cables
 - Automatic battery float charger
 - Engine pre-heater with thermostat (water heater on water-cooled units)
 - Flexible fuel connector
 - Fuel solenoid valve where required
 - Industrial grade muffler
 - Oil drain extension
 - Flexible exhaust connector
 - Pad type vibration dampeners
 - Instruction Manual
- A unit mounted Katolight Model 45 standard control panel with a KASSEC solid state automatic engine control providing two wire remote start capability and safety shutdowns for low oil pressure, high temperature, low coolant level, overcrank, and overspeed with 4 LED failure indicator lights, a 3-position (auto-off-manual) mode selector switch, AC voltmeter, AC ammeter, frequency meter and combination selector switch. Standard engine gauges include: battery charging ammeter, oil pressure, engine water temperature and running time meter

Katolight's (CEP) Controlled Environment Packages have been designed and equipped to include the options and accessories required to meet the needs of most standby power applications.

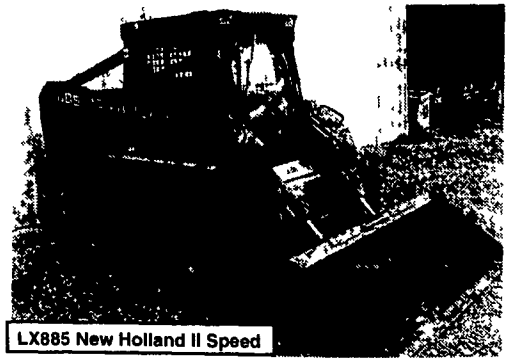
Volvo Diesel Generator Sets			
75 KW	\$9,800	175 KW	\$19,900
90 KW	\$10,900	200 KW	\$21,500
125 KW	\$15,900	225 KW	\$24,000
140 KW	\$16,500	250 KW	\$26,000

DISTRIBUTOR FOR NY, NJ & PA
WALLIS GENERATORS
800/231-2968

KELLER'S FARM MACHINERY

116 Richlandtown Pike, Quakertown, PA 18951
215-536-4046

- NH TN 75, 4x4 w/Loader
- Ford 1510 w/Ford Loader
- NH 1920, 4x4 w/Ford loader
- Ford 3910, 4x4 w/loader
- Ford 4630, 4x4 cab & Ford loader
- Ford 1210, 4x4 w/5' belly mower
- Ford 345C, 4x4 w/loader, 3 pt. PTO
- Ford 8670, 4x4, cab, duals, super steer
- Ford 2000 Dexta, diesel, LPTO
- Ford 5000D 8 Speed, PS
- Ford 2600, PS, live PTO w/Loader
- JD 3020D NF, 3 pt.
- JD 1520D, 3 pt., WF
- IH 444 w/loader, 3 pt., PS
- Case 1845C Skid Loader
- Kubota B20 4x4 w/loader & backhoe
- MF 135D, PS, Live PTO
- NI 362 PTO manure spreader
- NH 851 round baler
- NI 4643 round baler
- NH 258 rake



LX885 New Holland II Speed
Cab with Heater; 1,540 hrs.; Exc. Cond.; \$18,000



JD 7800
2,838 Hrs.; 145 HP; MFWD; Powershift Trans.; Exc. Cond.; \$56,000

- NH 258 Side Delivery Rake, New Cond \$3,800
- JD 9500 2WDCombine, 4,613 Hrs, Hydro Trans, C/B Type \$42,000
- 6 Row Corn Head \$7,000
- JD 435 Round Baler, Bale/Track Auto Monitor, Surface Wrap, Floatation Tires \$11,500

Carlyle & Martin, Inc.
18138 Maugans Ave., Hagerstown, MD 21740
1-301-733-1873

At **ZIMMERMAN** We Sell and Service...

CASE IH GLEANER **HESSTON** **NEW IDEA**

MILLER PRO **MAYRATH WOODS**

WHITE

Glencoe

WESTFIELD **WEAVERLINE**

Best Buys in Used Equipment

TRACTORS

- CIH MX110, MFD, Cab
- CIH MX110, MFD, Cab, Loader
- CIH MX110 MFD, ROPS
- CIH 2096 MFD, Cab
- CIH 8930
- Case 1690
- Case 4490
- IH 186 Hydro
- IH 414
- IH 784 w/Loader (Nice)
- Ford 801 w/Loader
- Ferguson 30

IH 1066 Mechanics Special \$4,500

- IH 1486
- IH 1586
- IH 3088

HARVESTING EQUIPMENT

- **Badger 1050, 18 ft. Wagon**
- **Miller Pro 4012 Dump Box**
- **Richardton 700 Dump Box**
- Gehl 970 Forage Wagon
- Miller Pro Forage Wagon
- JD Forage Wagon
- Grove Hyd. Drive Wagon
- NH 770 Harvester, 2 Heads
- Gehl 1000 Forage Harvester
- Hesston 7020 Harvester
- NI 767 Forage Harvester
- (2) NI 2-Row Corn Picker
- Case IH 600 Blower
- Gehl 1540 Blower
- JD 100 Blower
- (3) Blowers.....ea. \$100
- Trailer Grain Cart

TILLAGE

- IH 6 B18 Plow
- JD 2500 6B Plow
- Glencoe 7 Shank Soil Saver
- IH 370 12 ft. Disc
- Bush Hog 14 ft. Disc
- AC 20 ft. Wing Disc
- IH 4500 18' Cultivator

HAY EQUIPMENT

- JD 510 Round Baler...\$1,500
- **JD 456 Silage Special**
- NI 486 Round Baler
- **Hesston 4755 Baler-\$29,800**
- **Case IH 8580 Baler**
- Kverneland Bale Wrapper
- CIH 8350 Mower
- **NH 617 Disc Mower**
- NH 12 ft. Self-propelled Mower
- Case IH 8370 Mower
- JD 1219 Mower Conditioner
- NI 10'4" 3 pt. Mower
- Hesston 1090
- 6 ft., 3 pt. Disc Mower
- NI 5-Bar Rake
- (2) Miller Pro Rakes
- 18 Wheel Bi-Fold Rake
- JD 5-Bar Rake
- NI Wheel Rake
- Hesston 4-Star Tedder

MISCELLANEOUS

- 30 ft. Elevators
- White 5100 6R Planter
- IH 800 4RN Planter
- CIH Grain Drill (Like New)
- JD 8350 Drill - 21x 7
- Brillion Seeder
- Weaverline 430
- NI 3726 Spreader... Coming In
- Meyers 3245 Manure Spreader
- Farmmaster TMR
- Woods 14 ft. Rotary Mower
- NI 5 ft. Rotary Cutter
- 8 ft. Frt. Mtd Blade
- 20.8x42 Axle Duals
- 18x42 Axle Duals
- K&S 285 Mixer Wagon
- Zimmerman Funnel Mixer
- IH 1250 Grinder\$800
- CIH 2250 Loader
- 20x38 Duals

SKID LOADERS

- (5) Case 1840
- Case 580B
- Case 584 Forklift
- Case 580SL
- Gehl 5635
- Mustang 1700
- Woods 9000 Backhoe

ZIMMERMAN
FARM SERVICE, INC. BETHEL, PA
717-933-4114

Visit us on the Internet at <http://www.casecorp.com>
Case IH is registered trademark of Case Corporation

CASE IH