

85 Ford L9000, Tandem Axles, w/Dry Wall Hoist \$13,000  
Tandem Axle Enclosed Trailer, 10,000 Lb GVW,  
Galv Frame, Alum. Sides. \$4,800 OBO

**Weaver's Truck and Equipment Sales**

Milton, PA

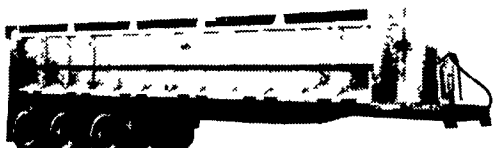
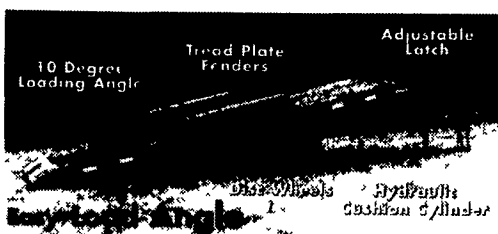
570/523/9598

**NORTH EAST ENTERPRISES**

SALES - SERVICE - PARTS - RENTALS



10 DEGREE LOADING ANGLE



CALL TOLL FREE 1-877-526-3655

After Hours: 410-658-0818 M-F 6-9 PM EST

Web Address: www.etrailersales.com

Email: trailerinfo@neent.com

Ask for Wayne or Julie

**PINE GROVE AUTO SALES & SERVICE, INC.**

Large Selection of Used Cars & Trucks • Trades, Financing, & Extended Warranties

RD5, Route 443, Pine Grove, PA 17963

Phone: (570) 345-2556 • Fax: (570) 345-3515



1992 Ford F150 XLT - Auto, 4x4  
Mileage 81,000, Bedliner, 8' Box - 2 Tone,  
V8, AC Excellent Condition \$7,995



1999 Chevrolet Silverado 1500 Black, Ext  
Cab, Auto 4x2 Every Option Available  
Pretty Truck!!!, 14,000 Miles \$17,995



Good Shape -  
400 Cummins Jake Brake \$8,000 OBO



1994 Ford F150 XL 4x4 8' Box  
Bedliner Ext Cab, Auto, V8 Nice Work  
Tk \$8,500



1996 Plymouth Grand Voyager - White  
4 Dr. Auto, CC, DRL, 64K, 7 Pass Seating  
Cold A/C. Very Nice!! \$7,450 w/warranty



1996 Ford Explorer XLT, 4x4 Auto Fully  
Loaded Green w/Tan Cloth Roof Rack Alum  
Wheel 32K \$9,950



2000 Ford Ranger XLT, 4x2 8' Box Red  
5 Spd 16K Cloth Interior \$8,500 Neg.



1987 Ford Ranger, 4x2 Blue w/Topper 5 Spd  
130K Runs 100% \$3,500 Neg.



**1995 GMC SIERRA SL**

1500 4x4 4.3 V6, 5 Speed, PS, PB,  
AM-FM Cass, 44,000 Miles, Teal

\$9,900

**A&J AUTO SALES**

798 E. Main St., Rt. 322 East, Ephrata, PA 17522

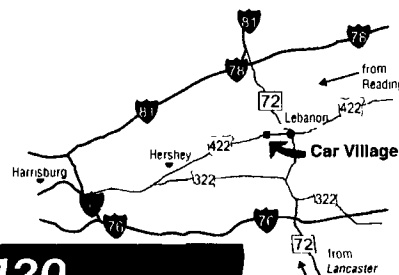
• 717-733-2873

**Business Hours:**  
Mon.-Fri. 9 to 9;  
Sat. 9-4

2300 W.  
CUMBERLAND ST.  
(Rt. 422)  
LEBANON, PA 17042  
(Across From  
Lebanon Valley Mall)

**CAR VILLAGE**

HEAVY DUTY TRUCKS



PHONE 717-274-2000 Toll Free 1-800-650-1420



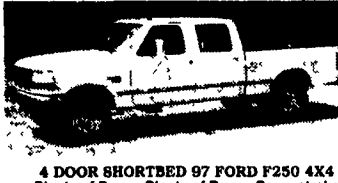
GRAIN HAULER, 99 FORD 550 4X4 DUMP  
14 Foot Body, Solid Sides, Swing Open Rear Doors,  
Only 36,000 Miles, Heavy 17,500 GVW, A Rare Find



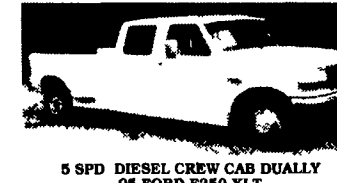
SNOWPLOW - GENERATOR  
96 FORD F350 4X4 ENCLOSED UTILITY  
Only 41,000 Miles, V8, Auto.



4X4 DODGE CLUB CAB, 97 DODGE 2500 4X4  
Very Nice Tk, Only 48,000 Miles,  
Cummins Turbo Diesel, AT, A/C, Loaded, All Options,  
You Will Like This One



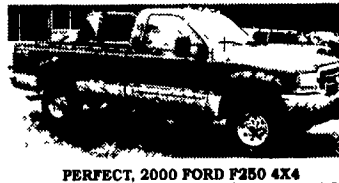
4 DOOR SHORTBED 97 FORD F250 4X4  
Plenty of Power, Plenty of Room, Powerstroke  
Turbo Diesel, AT, A/C, Loaded XLT, Tow Pkg,  
Aluminum Wheels, Dual Tanks, All The Good Stuff



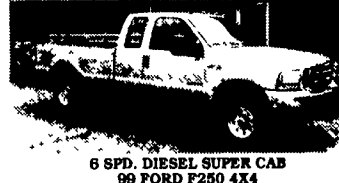
5 SPD DIESEL CREW CAB DUALLY  
96 FORD F350 XLT  
Only 60,000 Miles, Powerstroke Turbo Diesel, A/C, Tow  
Pkg, Big Swing Out Mirrors, Chrome Simulators



FLAT DUMP, 97 FORD F350  
9 Foot Steel Body, Only 50,000 Very Clean Miles, Fuel Inj  
351 V8, Auto, 4 10 Gear, A Nice One, Only \$17,900



PERFECT, 2000 FORD F250 4X4  
Only 7,000 Miles, Remaining New Tk Warranty, 6 Sp,  
Powerstroke, Turbo Diesel, A/C, Pkg, Aluminum Wheels,  
Look At This One



6 SPD DIESEL SUPER CAB  
99 FORD F250 4X4  
Nice, Clean, Only 27,000 Miles, Powerstroke Turbo  
Diesel, 6 Spd, Load XLT, 40/20/40 Seat, Tow Pkg  
Aluminum Wheels, New Tk Warranty



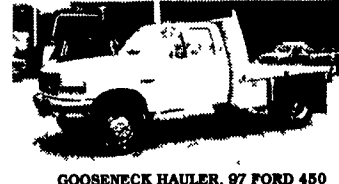
GAS, 4 DOOR 2000 FORD F250 SUPER DUTY  
4x4, XLT, Lariat, It is Perfect, Gorgeous Two Tone 5 4  
Triton At Alloy Wheel, Two Tone Would Look Great In  
Your Driveway



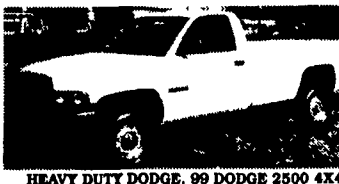
DIESEL 4 DOOR, 99 FORD F350 4X4  
Gorgeous XLT Single Wheel, Strong Powerstroke  
Turbo Diesel, AT, A/C, Capt Chairs, Console  
Aluminum Wheels, Tow Pkg, New Tk Warranty,  
Only 38,000 Miles



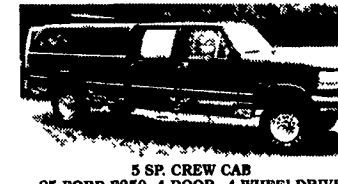
4X4 550 DUMP  
2000 FORD  
Heavy 17,500 GVW, Big Payload,  
Powerstroke Turbo Diesel, AT, A/C, 3 Yard, Dump Body



GOOSENECK HAULER, 97 FORD 450  
SUPER DUTY, Aluminum Flatbed With Gooseneck  
Hitch, Powerstroke Turbo Diesel, 5 Spd., AC,  
51,000 Miles, Very Strong Truck



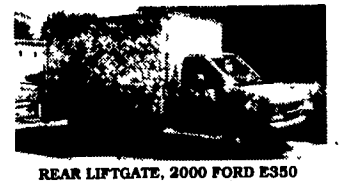
HEAVY DUTY DODGE, 99 DODGE 2500 4X4  
Not Fancy Inside, Vinyl Floor, 24 Valve Cummins Turbo  
Diesel, AT, A/C, New Tk Warranty, Only 48,000 Miles,  
Tow Pkg & Ready To Go \$22,900



5 SP CREW CAB  
95 FORD F350, 4 DOOR, 4 WHEEL DRIVE  
Powerstroke Diesel, 5 Sp, A/C, Loaded, XLT,  
You've Been Looking For This One



SHORT BED SUPER CAB  
2000 FORD F250  
4 Wheel Drive, Powerstroke Turbo, Diesel, AT,  
A/C, Loaded XLT, Tow Pkg, New Tk Warranty,  
Only 18,000 Miles



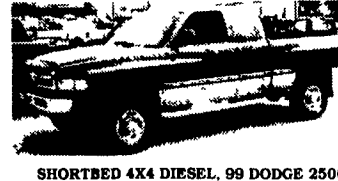
REAR LIFTGATE, 2000 FORD E350  
Just Right For Your Business  
New Tk Warranty Only 12,000 Miles, Powerstroke  
Diesel, AT, A/C, It's Like New



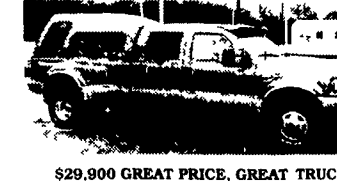
4X4 FLATBED, 99 FORD F350  
Nice, Clean, Only 30,000 Miles, Powerstroke Diesel, 6 Spd,  
A/C, 12 Ft Body Tool Boxes, Tow Pkg, New Tk Warranty



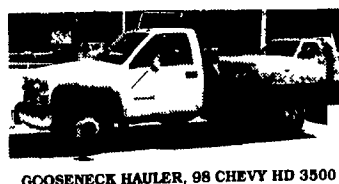
GREAT TOW MACHINE, 99 FORD F350 4X4  
Dually, Perfect Only 13,000 Miles, New Tk Warranty,  
Powerstroke Diesel, 6 Sp., A/C, Loaded XLT, Heavy Duty  
Tow Pkg, Aluminum Wheels, Very Strong



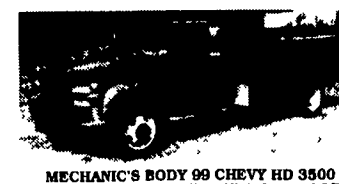
SHORTBED 4X4 DIESEL, 99 DODGE 2500  
QUAD CAB  
Great Driver, Powerful 24 Valve Cummins, Turbo Diesel,  
AT, AC, Tow Pkg, Laramie SLT



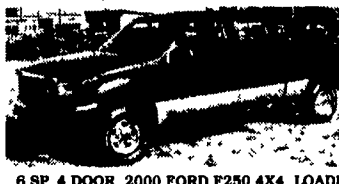
\$29,900 GREAT PRICE, GREAT TRUCK  
99 FORD F350 CREW CAB DUALLY 4X4  
Powerstroke Diesel, AT, Loaded Lariat XLT, Capt  
Chairs, Console, Aluminum Wheels, Tow Pkg



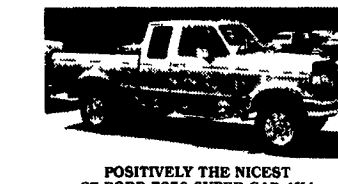
GOOSENECK HAULER, 98 CHEVY HD 3500  
Steel Bed, Gooseneck & Class 4 Hitch, High Output,  
6.5 Turbo, Diesel, AT, A/C, Big Swing Out Mirrors,  
Asking \$17,900



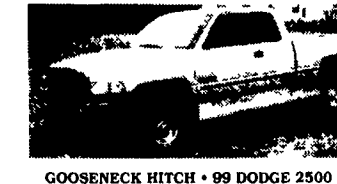
MECHANIC'S BODY 99 CHEVY HD 3500  
Super Clean, Only 27,000 Miles, High Output 6 5 Turbo  
Diesel, AT, A/C, 11 Ft Reading Body, Tow Pkg,  
Remaining New Tk Warranty



6 SP 4 DOOR, 2000 FORD F250 4X4, LOADED  
XLT LARIAT, Great To Look At & Super Clean Inside &  
Out, Powerstroke Diesel, 6 Sp Trans, Soft & Easy To  
Clean Leather Seats, Aluminum Wheels & Plenty More



POSITIVELY THE NICEST  
97 FORD F250 SUPER CAB 4X4  
You Should See This One Only 35,000 Miles,  
Beautiful XLT Trim, Powerstroke Turbo Diesel,  
5 Spd, A/C, Tow Pkg, Aluminum Wheels



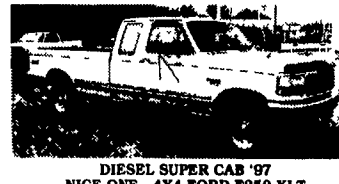
GOOSENECK HITCH • 99 DODGE 2500 4X4  
24 Valve Cummins Turbo Diesel, 5 Spd, A/C, Pwr Drive  
Seat, Dana Fnt & Rear Axles, Only 33,000 Miles,  
Gorgeous Truck



FLATBED DUMP 95 FORD F350 12 FT BODY  
Powerstroke Diesel, 5 Spd, A/C, Vinyl Seat & Floor,  
Ready To Work



4X4 Chassis, 99 FORD F350 XLT  
Ready For Your Body, Short 141 W B, 60" C A,  
Powerstroke Turbo Diesel, 6 Sp, A/C,  
Remaining New Tk Warranty, Runs Great



DIESEL SUPER CAB '97  
NICE ONE 4X4 FORD F250 XLT  
Heavy Duty 3/4 Ton, Powerstroke Turbo Diesel,  
AT, A/C, 40/20/40 Seat, Aluminum Wheels  
Limited Slip Gear, Dual Tank



2000 FORD F350 SUPER CAB DUALLY  
Opening Rear Doors, Strong Powerstroke Turbo Diesel,  
6 Sp, A/C, Capt Chairs, Console, Loaded, XLT,  
Limited Slip Axle, Tow Pkg, New Tk Warranty



ONLY 14,000 MILES, NEW TK WARRANTY,  
99 FORD F250 SUPERCAB 4X4  
Impressive Tk, Powerstroke Diesel, AT, AC, 40/20/40  
Seat, Tow Pkg, Aluminum Wheels & More Check It Out