

1995 Dodge 3500 w/Eby 9 ft alum stake, 4x4, 5.9, V8, 5 spd, AC, 6 new tires, Posl 2000# lift gate, 59k miles, tow pkg, \$13,500. 610-286-5519 M-F 8-5

1979 Ford Bronco, ex mechanical cond, some rust, w/Sno-Way down pressure hyd angle snowplow, \$3000 obo. 717-569-4264

'88 IH 22 ft box van truck w/lift gate, 28,000 GVW, \$4900. 610-921-1971

'86 Volvo 22 ft box van truck w/lift gate & rear camera, 28,500 GVW, good cond, \$4200. 610-921-1971

'89 Standard 45 ft flatbed trailer, dbl drop, 27,000 GVW, \$3400. 610-921-1971

'84 Utility 28 ft reefer van trailer, good cond, \$3900. 610-921-1971

82 LTL9000 Ford, fix up or for parts. \$1500 OBO. 610-942-0239

'90 Ford Ranger XLT, long bed, V6 auto, PS, PB, AM-FM, dark green, 76,000 miles, excellent condition, \$3,975. 717-733-2873

'94 Ford XL F150 super cab, 2WD, 300 EFI, 5 spd, PS, PB, AM-FM cassette w/cap, excellent condition, \$6,700. 717-733-2873

'95 Ford XL F150 4x4 super cab, short bed, 300 6 cyl, 5 spd, PS, PB, air, new radials, 55,000 miles, excellent condition, \$10,500. 717-733-2873

'92 Chevy Silverado 2500 extended cab, 2WD, 454 auto, PS, PB, cruise, tilt, air, towing package, 8,600 GVW, 67,000 miles, excellent condition, \$8,975. 717-733-2873

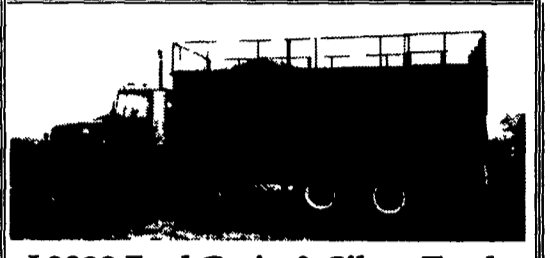
'68 Ford F750, dump, \$1700. '68 Chevy C30, dump, \$1100. '86 Ford F350, flatbed, \$2600. Or best offers. Sch Co. 570-739-4650

Used swinging Pullrite towing hitch, 5 ton cap, fits med & HD Ford trucks, new \$1900, sell for \$400. 717-532-3957

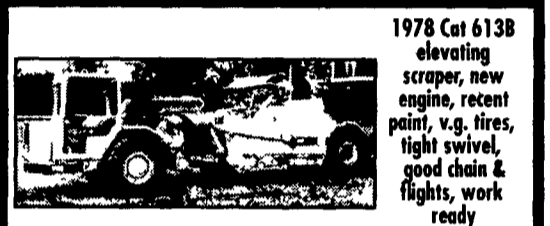
'69 Mack tandem cab & chassis, 38k, camelback rears, 250hp, long wheel base (180" c.f.) cab ex cond. 570-784-0111 days, 570-784-6359 eves



1993 Tri-Brook 18 1/2 foot Dump Body
with Hoist, Automatic Taper Heated Body with Coal Door, Like Brand New
\$10,500 O.B.O.
Phone 570-726-4707 after 6 P.M.
R. C. Bowman, Inc., Mill Hall, PA



L9000 Ford Grain & Silage Truck,
13 Speed, 20 Foot Bed, With Hydraulic Tailgate, New Radiator, Jake Brake, 75% Rubber, 30,000 Mile On Rebuilt Motor
\$16,500 Or Best Offer
Call (540) 234-9043



1978 Cat 613B
elevating scraper, new engine, recent paint, v.g. tires, tight swivel, good chain & flights, work ready
\$27,000

(301) 371-5500 (301) 662-0926
www.midmd.com



1997 Case 1845C,
gp bucket, hi-flow auxiliary hydraulics, 1,300 hours, v.g condition, work ready
\$15,000

(301) 371-5500 (301) 662-0926
www.midmd.com

Anthony L.
LANDIS
AUTO SALES
3394 Division Hwy., New Holland, PA 17557
Rt 322, 1-1/2 mi west of Blue Ball (717) 355-0644

95 Ford F-250 XL
4x4, 5.8, AT, A/C, 38K Mi., 8600 GVW, 4.10 Rear, Dark Green
\$9,950

1987 Volvo FE-615, 6 Cyl. Turbo Diesel,
6 Spd., Double Frame w/Lift Axle, 46,900 GVW
\$5,800 Offer/Trade

1979 Volvo FE-613, 6 Cyl. Turbo Diesel,
5 Spd., Air/Hyd. Brakes, Long W.B.
\$2,000 Offer/Trade

1977 Freightliner, c/o 350 Detroit. 9 Spd.,
Air Ride w/22 ft. Jerr-Dann Rollback Body, Power Up & Down w/Hyd. Tow Bar
\$6,000 Offer/Trade
570-204-1513
570-437-3669

SEE BINKLEY & HURST BROS. INC. FOR TRAILERS, FARM TRUCK BODIES, PARTS & ACCESSORIES

IN STOCK AT BINKLEY & HURST BROS. INC.!
A TRAILER THAT DOES IT ALL!
Haul your skid loader OR mini-excavator to the job, then haul the dirt away and bring in the crushed stone or whatever material you need to haul!

Deck Overs w/Flip Tail Hay Hauler Special

Optional Slide In Ramps

Skid Loader Models

82" Inside Fender Width

Deck Overs

Also Miscellaneous Truck Bodies

Call Binkley & Hurst Bros. For Trailer & Parts Accessories

2,000-22,500 Lb. Axles & Suspensions
Metal Trailer Components
Lights & Electrical Supplies
Brakes, Tires and Wheels
Jacks, Couplers & Hitches
Hardwood Accessories & Much More

Check Our Prices On Receiver Hitches!
Buy Where The Quality is #1 At the Right Price

BINKLEY & HURST BROS. - YOUR DEALER FOR QUALITY TRUCK HITCH EQUIPMENT

UNA-GOOSE

Introducing the **Removable Ball Goose-neck Trailer Hitch** from **UNA-GOOSE**

Unique patented design requires no welding or alteration
(Avoids possible electronic damage to late model trucks from welding)

Bolts under the bed directly to the frame without removing truck bed (Will pass DOT inspection)

- Strong Enough For Maximum Load

Call Binkley & Hurst Bros. Inc. today for a unique hitch for your pickup truck.

UNA GOOSE HITCHES

In Stock for Immediate Installation!

TRUCK	YEAR	WEIGHT	MODEL
Chevy	1988 1998	1/2 3/4 1 Ton	Chev
Chevy	1999 2000	1 Ton	Chev
Chevy	NBS 1999 2001	1/2 Light 3/4 Ton	NBS Chev
Chevy	NBS HD 2001	3/4 Ton	NBS HD Chev
Chevy	NBS HD 2001	Dually 1 Ton	No Hitch
Chevy	1987 & Older Models	1/2 - 3/4 1 Ton	Uni Hitch
Ford	1988 2001	1/2 3/4 1 Ton	Ford
Ford & Chevy	1997 1998	Light 3/4 Tapered Frames	Chev & Ford
Ford	1987 & Older Models	1/2 3/4 1 Ton	Uni Hitch
Dodge	1994 - 2001	1/2 3/4 1 Ton	Dodge
Dodge	1993 & Older Models	1/2 3/4 1 Ton	Uni Hitch

BINKLEY & HURST BROS. INC.

133 Rothsville Station Rd.
P.O. Box 0395, Lititz, PA 17543-0395
(717) 626-4705 1-800-414-4705 Fax (717) 626-0996

KEENS SERVICE, INC.

“(Since 1963)”

(717) 626-5420
Lititz, PA

- Sales
- Rentals
- Service

Storage Trailers For Sale \$1000-\$1500

DIESEL PERFORMANCE

Ford Powerstroke: 30% More HP!
100 lbs. More Torque!

GMC 6.5L Turbo: 40% More HP!
60-90 lbs. More Torque!

Dodge Ram Diesel: 50-150 More HP!
100-300 lbs. More Torque!

- High Flow Exhaust & Intake Systems
- Performance Chips
- Torque Converters, Throttle Bodies, Auto Lock Kits, Heavy Duty Clutches
- Exhaust Brakes
- Performance/High Flow Injectors

SPECIAL!
FREE Glow Plugs w/6.9, 7.3, 6.2, 6.5 liter Pump Injector Purchase!

From The Diesel Specialists For Over 45 Years

Penn Diesel Service Co.
Interstate 81 Exit 77, Harrisburg, PA
(800) 535-2913

JONES

GM Parts

THE FEELING IS GENUINE

GM GOODWRENCH 350 V8 1973-85
Part Number 10067353
New Engine - Not Rebuilt
36 Month or 50,000 Mile Warranty
\$1,299⁰⁰

New Engine - No Core Fee

WE'LL MATCH ANY COMPETITOR'S PRICE!

Goodwrench Transmissions Now In Stock! Call For Great Prices

Call 394-0711 for prices on other New or Remanufactured Goodwrench Engines. 2.5 Liter thru 454 cid. Gas and Diesel

Chevrolet - Pontiac - Olds - Buick - Cadillac - GMC

JONES GM PARTS CENTER
1335 Manheim Pike, Lancaster, PA 17604
Easily Located on Rt. 72 Just off of Rts. 283 & 30
Hours: Mon-Fri 7:30 a.m. - 8 p.m. Sat 7:30-3
(717) 394-0711

MORE THAN JUST POWER.