

Public Auction Register

Closing Date Monday 5:00 P.M.

of each week's publication

Internet Sale Register will be updated every Sat. at 2:23 P.M.

PUBLIC AUCTION

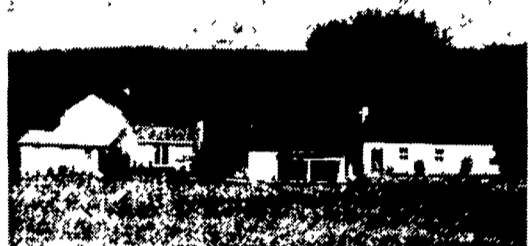
VALUABLE REAL ESTATE

18.6 ACRE FARMETTE

SPRUCE HILL TWP. - JUNIATA COUNTY

TUES., SEPTEMBER 18, 2 PM

LOCATION: R R 1 Ox Bow Road, Honey Grove, PA Take Rt 322 W from Harrisburg or E of State College to Rt 75 Port Royal Exit Take Rt 75 South of Port Royal approx 10 miles to T Lane Rd Turn right approx 1/2 mile cross small bridge & immediately bear right on macadam rd approx 1 mile to where Rd makes sharp left curve, turn right macadam approx 1/2 mile top property on right



18.6 ACRE farmette w/spectacular view of Juniata Valley 2 1/2 sty log & frame house 1,820 sq ft, 3 bdrms, country kitchen, 1st floor family rm, living rm, den/office, Barn is masonry & frame w/lean-to, shop/garage is 28'x40' masonry bldg, 2 pole bldgs, .8 acres fenced pasture, 4 acres woods & balance tillable Approx 1,250, road frontage & 900' Tuscarora Creek Frontage **NOTE:** This is truly a "one of a kind" farmette in move in condition w/super setting Gentleman farmette ideal for horses, cattle, etc Inspection by appointment or Open House Sats, Sept 1, 8 & 15 from 1 to 4 PM For color brochure, land plotting & financing call Auctioneers 717-733-1006

MELVIN W. & ERMA N. WEAVER
717-527-4420

Randal V. Kline,
Roy E. Good, Jr.
Keith Snyder, Auctioneers
(717)733-1006
Lic. #499, #2116, #3433



SAT SEPT 29 - 9AM For L Robert Frame Estate Trucks, Cars, Tractors, Farm Equipment, Sleighs & Wagons, 655 Little Conestoga Rd, Uwchland, Pa John D Stauffer Auct AU-1509
SAT SEPT 29 - 10AM Loc Hard woodmerchants, In c Forge Rd Meyersdale, PA Dozer, Logging Loaders, Trucks & more Auct
John C Kimbel 800-334-4395 or 865-376-7009
SAT SEPT 29 - 10AM Loc Rt 279 go past Travel America Truck Stop towards Delaware Garage Behind Pat's Liquors Automotive Auction Hunters Auct Srvc 410-658-6400
SAT SEPT 29 - 8 30AM 20+ Hit N-Miss Engines, Tractors, Equip-

ment, consignments Welcome Dir 1 1/20 mi N of Manchester, PA along Rt 181 in York Co. Turn right at Gray Rock Auction Barn Sign Just N Off I-83 & Rt 30 Intersection in York Pa Seller Wilson Little & Others Rentzels Auct 717-764-6512
SAT SEPT 29 - 10AM Farm Equipment, Tools, Household Goods Loc traveling N on Rt 897 to the sq of Fivepointville, turn L onto Fivepointville Rd, proceed 1/2 mile to sale on left Sale for Edward N Martin Auct Mart

in's Auction Service 717-354-7186, AU1078L
SAT SEPT 29 - Farm Equip HH Goods, Tools Loc 577 Fivepointville Rd Denver Owner Edward N Martin Martin's Auct Service #1078
SAT SEPT 29 - 12 Noon A I Herds, Spring Bred Cows, Bull Calves and many more Mercer Angus 330-868-6334 Auct
SAT SEPT 29 - 8AM Tractors, parts tractors, farm & const eq, parts & antiques At our yard on

US Rte 20 4 mi E of Sharon Springs, NY MacFaddens 18-284-2090
SAT SEPT 29 - 8AM Consignment Auction wanted Tractors Farm Equip, Farm Items Lawn & Garden, Collectibles Located 11790 Canning House Rd Felton, PA Auct Rick Foreman AU1163L, 717-927-1305
SAT SEPT 29 - 8 30AM, Horses 11 AM Horse Sale Middleburg Livestock Auction PO Box 185 Middleburg, Pa Clarence Shirk 717-656-8793, John Shirk 570-837-9935
SAT SEPT 29 10AM Finger Lakes Livestock Exchange Canandaigua NY
SAT SEPT 29 9AM Farm Equip, Tools Household Items and Antiques Located 105 Linden Grove Rd New Holland PA Aaron H and Edna Zimmerman Groff Auctioneering #AU1471-L
SAT SEPT 29 - 9AM Location 41 Franklin St New Freedom York Co PA Real Estate Furniture Household Glassware Antiques Guns Coins Tools Owner Ethel Nonemaker Auct Kenneth Keeny AU2797L 717-933 3448
SAT SEPT 29 10 30AM For the estate of Earl L Wert Loc in Pennington, NJ Estate Farm Equipment Auction Auct Col Fred R Daniel 908-369-4784
SAT SEPT 29 - 10AM Held at Ridge Fire Co Along Rt 23 Between Phoenixville & Rt 100 Pavilion Parvin Estate Train Collection, Blue Room Parvin Estate Dinky Toy Collection Ted Maurer AU-000593-L 610-323-1573 or 610-367 5024
SAT SEPT 29 - 9AM Real Estate 111 Acre Farm Loc 2608 Shippen Dam Rd Upper Paxton Twp, Millersburg PA Owner Rosalie Strait Auct David Deibler 362 2942 AU001213 L & Ed Shoop 896-8305 AU000842-L
SAT SEPT 29 9AM Ranch Style Home Antiques and Personal Property for Amos Musser & Susanna at 230 Ponorama Dr Brecknock Township Lanc Co Auct Leroy S Horst & Paul W Horst

Auction at the farm of Dean Lenhart, Stahlstown, Pa From Donegal Exit of Pa. Turnpike take Rt. 31 east to Rt. 711 north, travel 5 miles, then Rt. 130 east 1 mile, turn onto Kreger Rd. Follow auction arrows.

Saturday, Sept. 22, 2001 9:30 a.m.

Farm & Horse Drawn Equipment GMC Rollback Truck

Farm Equipment: (2) AC D17 gas tractors, JD 720 diesel tractor; AC D15 w/f 3 pt. gas tractor (40 h.p.) w/loader; AC model G tractor w/scraper blade & cultivators; Ontario 16 disc grain drill; Int. #82 pull-type combine; nice JD 494A 4 row (wide row) corn planter; Int. 430 baler w/thrower; 3 sets of plows; 12' disc; chisel plow; Wood's 15' batwing mower, Wood's 6' brush mower; Int. 1150 grinder mixer; hay wagons, JD single row forage harvester, 18' Custom Fab stock trailer; AC 7' side mounted mower; 12' lime spreader; 3 pt. spin spreader; (3) grain augers; grain cleaner w/sacker, (2) drying fans for metal grain bins..

Horse Equipment: Nice Kramer horse drawn wagon, complete w/hoops & canvas; Amish buggy; Montgomery Ward covered wagon; McCormick ensilage cutter w/4 knives; McCormick corn binder; McCormick #7 horse mower (6 ft); McCormick #9 horse mower (6 ft.); JD horse drawn manure spreader, all original, on steel; hillside plow. 1974 GMC roll-back truck.

Miscellaneous: platform scales; cider press; Biro meat band saw; lots of wagon wheels, parts & running gear and lots more.

Auctioneer's note: All equipment kept in buildings, and is field ready.

Terms: Cash (lunch available)
Louis H. Kuznik & Associates AU #524-L
724-423-4631

REDDING AUCTION SERVICE



Late Model Tractors - Farm Equipment John Deere Crawler-Loader - Combine Trucks - All Terrain Vehicles

Shop Equipment - Tools - Guns - Household
The undersigned having sold farm, will sell at public auction located taking the US Route 15 By-Pass 14-miles North of Gettysburg, PA or 16-miles South of Camp Hill, PA turn (at the York Springs Auto Auction) onto Bonners Hill Road and sale site - on

Monday, September 17 3:00 P.M.

Auctioneer's Note - Don't Miss This Auction - Lot As-New & Very Well Kept Items - Lot Special Pieces - Plan To Attend! - SALE INSPECTION - SEPT. 15, SEPT. 16 & SALE DAY ONLY!

TERMS - Cash or Acceptable PA Check - Out of state buyers must have letter of credit for this auction unless known by owner or auctioneer Lunch Truck

OWNER JEFF SEIFERT
Cell Phone - 870-8160

Redding Auction Service - PA NO. RH-78-L
Gettysburg, PA - Ph: 717-334-6941

STATE OF NEW JERSEY STATE AGRICULTURE DEVELOPMENT COMMITTEE

PUBLIC AUCTIONS

OF 8 PERMANENTLY PRESERVED FARMS

73 Acres, Springfield Twp., Burlington County
Old residence, outbuildings
Auction: December 14, 2001
Minimum Bid: \$240,000

180 Acres, N. Hanover Twp., Burlington County
One Residential "Opportunity"
Auction: November 30, 2001
Minimum Bid: \$365,000

43 Acres, Hamilton Twp., Mercer County
One Residential "Opportunity"
Auction: November 2, 2001
Minimum Bid: \$150,500

82 Acres, Delaware Twp., Hunterdon County
2 old residences, outbuildings
Auction: December 7, 2001
Minimum Bid: \$540,000

48 Acres, Manalapan Twp., Monmouth County
One Residential "Opportunity"
Auction November 8, 2001
Minimum Bid \$165,000

94 Acres, Holmdel Twp., Monmouth County
Circa-1760 house, frame barn, shed
Auction: December 13, 2001
Minimum Bid: To be determined

96 Acres, Holmdel Twp., Monmouth County
Frame house, 2 barns, 2 equip sheds
Auction: December 13, 2001
Minimum Bid: To be determined

120 Acres, Harmony Twp., Warren County
2-story house, dairy barn, sheds
Auction: Friday, November 9, 2001
Minimum Bid: \$350,000

Farmland Preservation Projects
For Details, Call (800) 474-5314

PUBLIC AUCTION

Farmette & Personal Property Friday, October 12, 2001 @ 3:00 P.M.

Valuable 11 acre farmette and personal property located at 5254 Diem Road, Salesbury Township, Lancaster County, PA. (from 1 mile east of Blue Ball and Route 322, take Route 897 approximately 3 miles to Diem Road, turn right/ or from Route 340 between Intercourse and White Horse take Route 897 north approximately 3 miles to Diem Road, turn left.

Real Estate is to be offered at 5:30 PM and consists of a parcel of land containing 11 acres +/-, with a paved driveway leading to a two (2) story stone and frame house with 3 bedrooms, 2 baths, sewing room, family room w/fireplace, spacious living room and an eat in kitchen. Heat is provided by an oil fired hot air heat system. There is an electric water heater and a water softener. You are invited to inspect this property September 22, from 10:00 AM until 2:00 PM or by appointment.

Also... at the same location the adjoining 1.24 acre building lot will be offered for sale by James W and Bonita Diem. Auction time will be 6:00 PM and the property is numbered 5346 Southview Drive, New Holland, PA. You will appreciate the location of the south side of the mountain. There are some mature trees to enjoy. Planning your new home? Take a look at this lot.

Personal Property consists of a Farmall A tractor, cultivator and plow, Simplicity rear tine tiller (used 2 seasons (#516RT)), utility cart, berry crates and boxes, pickers trays, meat grinder, misc. garden tools, push cultivator, lawn sweeper, rotary mower, potato plow, Lambert single row cultivator, 24" aluminum extension ladder, used lumber, 3 wood shaking forks, (one signed C Musser), 2 wood picnic table and benches, red-wood chairs, foot stool, 2 wood bar stools, corner stand with shelves, metal cabinets, bird cage and stand, 5 pc. mahogany bedroom suite, TV stand, kerosene lamps, bracket lamp, lamp chimneys, hand made copper pitcher, silver plate tea set, variety of collectible paper and magazines, cooking and sewing books, blue and clear glass jars, variety of box lots, also items of value not listed.

AUCTION FOR JOHN F AND STELLA I MURRY

Elmer Murry Auctions, Inc.
-AU-648-L-

Professional Auctioneer, Appraiser and Advisor
Our Services Are Not a Sidelime
(717) 626-2636 Fax (717) 627-6757
Gibble Kraybill & Hess - Attys.

COMPLETE AUCTIONEERING SERVICE

PUBLIC AUCTION WED., SEPT. 19, 2001 @ 9:00 A.M.

Sunbury, PA

Complete Liquidation Of A Local Vending Machine Business

DIRECTIONS From Harrisburg travel north on Rts 11 & 15 Exit to Sunbury & Rt 61 and continue through town on Rt 61 When leaving the city exit onto Rt 890 Travel 1/4 mile, auction just ahead on the right at the former Performance Chevrolet Buildings.

TRUCKS & EQUIPMENT

1993 Ford Econoline 350 Cube Van, V8 Automatic, (2) 1987 Ford Econoline 350 Cube Vans; V8 Automatic; 1992 Chevy C-30 Cube Van, V8 Automatic, 8500 GVW, 1994 Ford F-250 Truck, Automatic w/Air, 5.8 Liter V8, Liftgate & Tool Boxes; 1986 Ford F-250, V8 Automatic w/Lift Gate; Hyster Forklift MD H40H w/Sideshift, 5100 lbs. Lift, 2 Multi-Tron Pallet Jacks, 5000 lbs & 5500 lbs Lift, Electric Appliance Starr Cart, 1500 lbs Lift, 15+ Bag Carts, 2 Loading Ramps

225+ VENDING MACHINES

52 Soda Machines Including Pepsi, Very Fine, Dr. Pepper, Cold Drinks & Juice Drinks; 31 Sandwich Machines, 52 Snack Machines By Rowe, Snacktron & Others; 11 Milk Machines; 13 Cup Soda Machines; 4 Hot Food Machines, 9 Ice Cream Machines, 2 Cigarette Machines, 4 Refrigerators, 21 Microwaves & Carts, 30 Change Machines, 4 Chest Freezers, 43 Coffee Machines, Old Mirrored Fresh Hot Coffee or Chocolate Machine; Star Manufacturing Hot Dog Roaster MD 25C, Cappuccino Machine; 1960's First All Electric Cigarette Machine, 24 CO2 Bottles; Bunn Ice Tea Machine, Electric French Fryer; Jet Spray Drink Cooler; Cash Counting Machine; Brandy Commercial Coin Sorter & Counter Md 958; Lots Of Condiment Counters

COOLERS & RELATED EQUIPMENT

10'x12' Capital Walk In Freezer w/3' Door; 16'x12' Bally Walk In Cooler, 3' Door, 6'x6' Capital Freezer w/6'x6' Cooler Combo, 3' Doors, 6'x8' Bally Cooler, 3' Doors; (Coolers Presently Operating & Must Be Removed); 2 Howard 2 Door Upright Coolers/Freezers; Garland Commercial Convention Oven, Howard 1 Door Upright Cooler, Cecilware Md HDC-27 Gas Grill; Raetone 2 Door Freezer, Metal Lockers, Ice Cream Freezer, 6' Ansil System, Typewriter, Table Saw, File Cabinets, Step Ladders, Office Desk & Chairs, Wayne Trash Pump, Misc. Tools, Utility Carts, Coke Clock, Chairs, Trash Cans, Parts Bins, Milk Crates, Apt Frig, Warming Lights, Napkin Holders, Stainless Steel Double Sink, Cast Fan

KENNETH E. HASSINGER
RR 02, Box 985
McClure, PA 17841
(570) 658-3536
AU-001532-L

NEIL A. COURTNEY
R.D. #1 Box 239
Richfield, PA 17086
(570) 539-8791
AU-002651-L

PUBLIC AUCTION

For Paradise Equipment

THURSDAY, SEPT. 27, 2001

Forklifts, Wood & Metal Working Equipment, Restaurant Equipment, Scissor Lift, Miscellaneous, Office Equipment

At Paradise Sale Barn, Paradise, PA

Directions: Approximately 8 miles East of Lancaster, PA on Route 30 turn on Meadow Lane to sale on right.

WATCH FOR NEXT WEEK'S AD FOR FULL LISTING

For more information call Larry Goolsby at 687-0990.

Terms By:
Paradise Equipment
Larry & Mitch

All Advertised Items Subject to Prior Sale
Cash or Honorable PA Check Only
All Announcements Sale Day Take Precedence Over All Advertising.
Not Responsible for Accidents
Food on Premises

Auctioneer: Mel Hoover
AU-003111-L

717-354-8397 Home or 717-354-6431 Barn

