

Allentown Fair Results

(Continued from Page A24)

4-H
 Champion Berkshire boar: Todd Lee Bennecoff Jr.
 Reserve champion Berkshire boar: Todd Lee Bennecoff Jr.
 Champion Chester White boar: Daniel Billig.
 Reserve champion Chester White boar: Daniel Billig.
 Champion Duroc boar: Jared Treichler.
 Reserve champion Duroc boar: Todd Lee Bennecoff Jr.
 Champion Hampshire boar: John Strawbridge.

Reserve champion Hampshire boar: John Strawbridge.
 Champion Landrace boar: George Billig.
 Reserve champion Landrace: George Billig.
 Champion Poland China boar: Melana Lovell.
 Reserve champion Poland China boar: Melana Lovell.
 Champion Spotted Poland China boar: John Strawbridge.
 Reserve champion Spotted Poland China boar: John Strawbridge.
 Champion Yorkshire: Samantha Rabenold.

Reserve champion Yorkshire: Samantha Rabenold.
 Champion Berkshire gilt: Todd Lee Bennecoff Jr.
 Reserve champion Berkshire gilt: Todd Lee Bennecoff Jr.

SWINE MARKET SHOW RESULTS OPEN

Champion lightweight: Samantha Rabenold.
 Champion medium weight: George Billig.
 Champion heavyweight: John Strawbridge.

GRAND CHAMPION

George Billig
4-H
 Champion lightweight: Jeremy Gonzalez.
 Reserve champion lightweight: Samantha Rabenold.
 Champion medium weight: George Billig.
 Reserve champion medium weight: Justine Bennecoff.
 Champion heavyweight: John Strawbridge.
 Reserve champion heavyweight: John Strawbridge.

GRAND CHAMPION

George Billig
RESERVE GRAND CHAMPION
 John Strawbridge
SUPREME CHAMPION
 George Billig
SHOWMANSHIP RESULTS
4-H
 Champion: Daniel Billig
SUPREME CHAMPION
 Daniel Billig
STEER MARKET SHOW RESULTS OPEN

Champion lightweight: Samantha Rabenold.
 Champion medium weight: George Billig.
 Champion heavyweight: John Strawbridge.

GRAND CHAMPION

George Billig
4-H
 Champion lightweight: Jeremy Gonzalez.
 Reserve champion lightweight: Samantha Rabenold.
 Champion medium weight: George Billig.
 Reserve champion medium weight: Justine Bennecoff.
 Champion heavyweight: John Strawbridge.
 Reserve heavyweight: John Strawbridge.

GRAND CHAMPION

George Billig
RESERVE GRAND CHAMPION
 John Strawbridge
SUPREME CHAMPION
 George Billig
SHOWMANSHIP RESULTS
4-H
 Champion: Daniel Billig.
SUPREME CHAMPION
 Daniel Billig
BREEDING BEEF SHOW RESULTS OPEN

Champion Angus bull: Jamie Hower
 Champion Simmental bull: Shelby Ranck.

SUPREME CHAMPION

Jamie Hower
 Champion Angus heifer: Jennifer Hower.
 Reserve champion Angus heifer: Jamie Hower.

Champion Hereford heifer: Luke Lichtenwalner.
 Reserve champion Hereford heifer: Kyle Newlin.
 Champion Limousin heifer: Shelby Ranck.
 Champion Simmental heifer: Jesse Polskiewicz.
 Reserve champion Simmental heifer: Eliza Walton.

SUPREME CHAMPION

Jesse Polskiewicz
4-H
 Champion Angus heifer: Jennifer Hower
 Reserve Angus heifer: Elena Polskiewicz.
 Champion Hereford heifer: Luke Lichtenwalner.
 Reserve champion Hereford heifer: Kyle Newlin.

Champion Limousin: Shelby Ranck.
 Champion Simmental heifer: Jesse Polskiewicz.
 Reserve champion Simmental heifer: Eliza Walton.

MARKET BEEF SHOW RESULTS

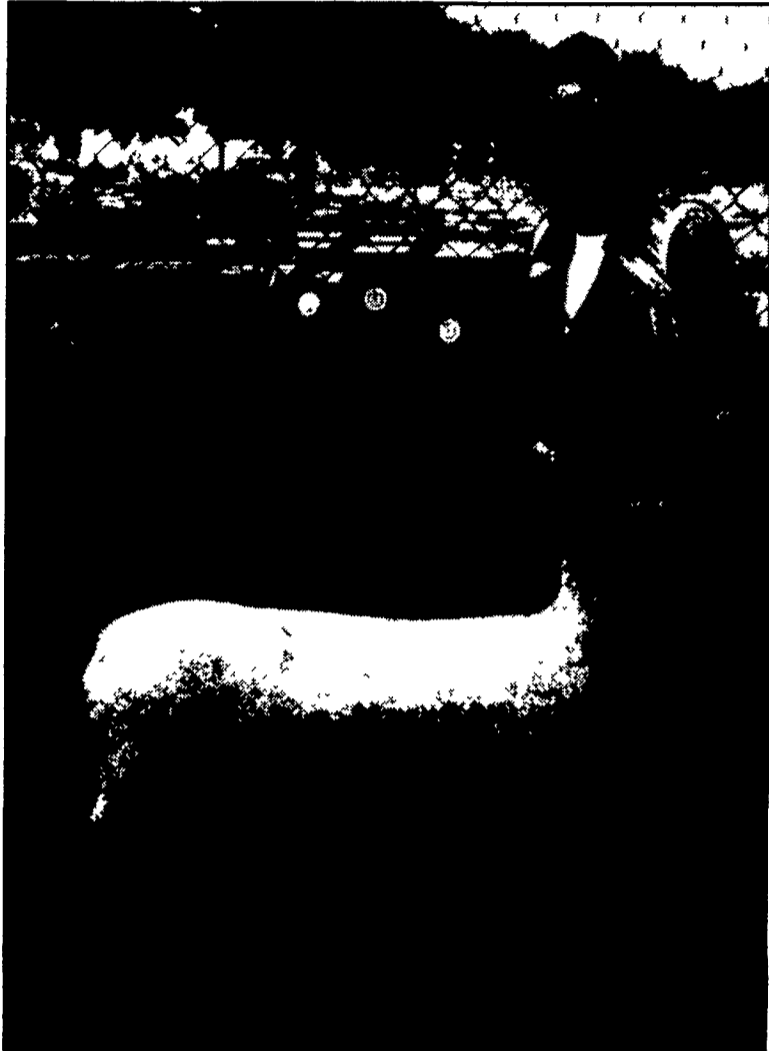
4-H
 Champion: Jennifer Hower.
 Reserve champion: Shelby Ranck.

AG-ED

Champion: Jill Nelman.
SUPREME CHAMPION
 Jennifer Hower
SHOWMANSHIP RESULTS
4-H

Champion: Jennifer Hower.
AG-ED

Champion: Jill Nelman
SUPREME CHAMPION
 Jennifer Hower



Winner of grand champion 4-H market lamb honors was Melana Lovell. Melana also took home the champion showman placing.

Farm Production Expenditures Up 2.4 Percent In 2000

WASHINGTON, D.C. — U.S. farm production expenditures totaled \$188.5 billion in 2000, up 2.4 percent from the revised 1999 total of \$184.1 billion, according to the National Agricultural Statistics Service (NASS).

The largest contributors to the increase were: fuels, up 32.0 percent; farm improvements and construction, up 18.0 percent; livestock and poultry purchases, up 7.1 percent; and other farm machinery, up 2.9 percent.

The increases were partially offset by decreases in: farm supplies and repairs, down 1.6 percent; farm services, down 1.2 percent; and ag chemicals, down 1.2 percent.

The largest two expenditure categories were farm services which accounted for 13.5 percent of the U.S. total production expenses, and feed which accounted for 13.0 percent of the U.S. total production expenses.

The farm services category includes expense items such as custom work, utilities, marketing charges, veterinary services, transportation costs, and miscellaneous business expenses.

The average expenditures per U.S. farm in 2000 were \$87,035

compared to \$84,195, as revised for 1999.

On the average, U.S. farm operations in 2000 spent \$11,728 on farm services; \$11,312 on feed; \$9,142 on labor; \$8,311 on livestock and poultry purchases; and \$7,434 on rent.

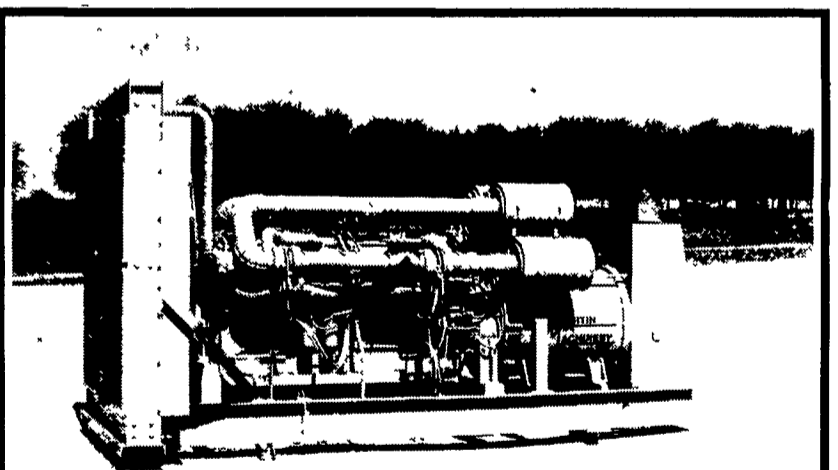
Revised estimates for 1999 indicated that U.S. farms spent an average of \$11,757 on farm services; \$11,208 on feed; \$9,012 on labor; \$7,685 on livestock and poultry purchases; and \$7,274 on rent.

The Northeast Farm Production Region (Connecticut, Delaware, Maine, Maryland, Massachusetts, New Hampshire, New Jersey, New York, Pennsylvania, Rhode Island, Vermont) contributed \$11.9 billion or 6.2 percent of the 2000 U.S. total for farm production expenditures.

The regions with the highest total expenditures were: the Corn Belt (IL, IN, IA, MO, OH) at \$35.3 billion; Pacific Region (CA, OR, WA) at \$31.2 billion; Northern Plains (KS, NE, ND, SD) at \$24.2 billion; Lake States (MI, MN, WI) at \$19.4 billion; and the Southern Plains (OK, TX) at \$16.0 billion.

See Lancaster Farming CowCam

Visit our Website at www.lancasterfarming.com



GENERATORS

Sales ★ Service ★ Rentals
 Complete Generator Systems
 PTO • Portables • 2-1600 KW
 We Service It If You Have It,
 And Sell It If You Need It.



34 W. Mohler Church Rd.
 Ephrata, PA 17522
 Tel: 717-738-0300
 Fax: 717-738-4329

FEED GOES IN..... MANURE COMES OUT!

FEED AND FORAGE ANALYSIS = ANIMAL HEALTH AND PRODUCTION
 MANURE ANALYSIS = FERTILIZER VALUE FOR NUTRIENT PLANNING
 TIMELY ANALYSIS = BEST MANAGEMENT PRACTICES

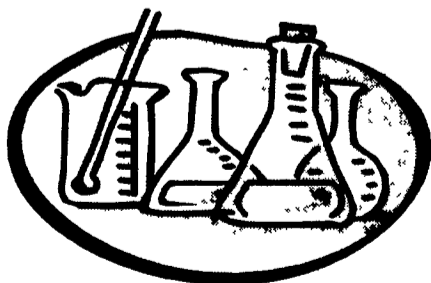
AGRI ANALYSIS, INC.

IS YOUR SINGLE SOURCE FOR AGRICULTURAL TESTING SERVICES

RESULTS IN 2-4 DAYS
 PICK-UP SERVICE AVAILABLE
 PREPAID MAILERS FOR FEED SAMPLES
 FAX OR E-MAIL RESULTS

NIRS RESULTS IN 8-24 HOURS
 FREE SAMPLE KITS / CONTAINERS
 11 MANURE ANALYSIS OPTIONS
 2 STAFF AGRONOMISTS

ALSO TEST: SOIL, PLANT TISSUE, WATER, MYCOTOXINS, LIME AND FERTILIZER



Agri Analysis, Incorporated

AGRICULTURAL PRODUCTS TESTING LABORATORY SINCE 1983

Prompt Results For Profitable Decisions

Phone (717) 656-9326
 Fax (717) 656-0910

280 Newport Road
 P.O. Box 483
 Leola, PA 17540

E-mail
jackagri@aol.com