

South Dakota Welcomes European Dairy Delegation

MILBANK, S.D. — Dairy producers from the Netherlands and Belgium are considering selling their dairy operations in Europe and moving to South Dakota to dairy. They spent time recently touring dairies and cheese factories and talking to dairy industry insiders about what it would take to set up shop in the Upper Midwest.

On Thursday, the Valley Queen Cheese Factory and the Midwest Dairy Institute gave the Europeans a taste of South Dakota hospitality with a reception and dinner at the Chalet Educational and Visitor Center

BVD

(Continued from Page 32)

Some producers say their herd is "closed" so they don't need to vaccinate.

In this day of high cattle numbers and movement of people and cattle between farms, I don't believe that a "closed" herd is possible or at least not worth taking the risk that this assumption involves.

With the testing and vaccines that are available today, there's really no reason to continue to see "BVD disasters."

on the MDI campus. Many local leaders and businesspeople were in attendance.

The after-dinner program included comments by South Dakota Agriculture Secretary Larry Gabriel and Dairy Development Specialist Roger Scheibe. Both men echoed the importance of increasing the number of dairy cows in the state to keep both crop producers and processing plants viable. Gabriel emphasized the importance of "capturing the value" that exists in our raw agricultural products before we ship them out of state. He believes strongly that increasing livestock numbers in a responsible way is a large part of the solution.

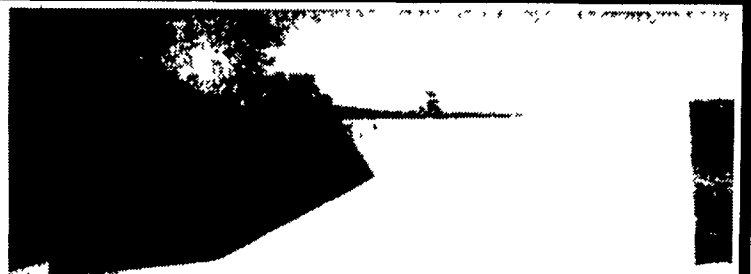
The Europeans are considering moving to South Dakota because of the pressures exerted upon them by ever-increasing urban and suburban populations in their homeland. For the most part, they run small family dairies with 100 cows or less.

Milbank has a fine tradition of welcoming immigrants and helping them build new lives in America. The visitor center where the reception was conducted was donated by the families of Alfred Nef and Alfred Gonzenbach. The "Alfreds" were themselves immigrants from Switzerland who moved to Milbank in 1929 to found the Valley Queen Cheese Factory.

QUALITY POURED CONCRETE WALLS

Specializing:

- Bunker Walls
- Foundation Walls
- Manure Storage



STOLTZFUS CONCRETE CONSTRUCTION

717-423-6974

Cumberland Co.
Newburg, PA