



Farm Calendar

Tuesday, September 25

Dairy Feeding Systems Management, Lebanon, also Oct. 2 and 9. Contact Tim Beck, (717) 840-7408.

Wednesday, September 26

Intro to Windows I, Lebanon County Extension Office, thru Sept. 27.

Thursday, September 27

Lebanon County Grazing Walk, David Williams, Swatara Road, Lebanon, 10 a.m.-noon.

Saturday, September 29

Hay Field and Pasture Management Workshop, University of Delaware Extension at university farm, Newark, Del., 9:30 a.m.-noon.

Tuesday, October 2

Intro to Windows I, Lancaster County Extension Office, thru Oct. 3.

Friday, October 5

Transition Cow Workshop, York County.

Wednesday, October 10

Windows II, Cumberland County Extension Office, thru Oct. 11.

Saturday, October 13

Beef and Forage Day, Eastern Ohio Research and Development Center, Caldwell, Ohio. (740) 732-2682.

Monday, October 15

Intro to Windows I, Franklin County Extension Office, thru Oct. 16.

Wednesday, October 17

Pasture Walk, Canyon Livestock Company, Jim and Beth Weaver.

Monday, October 22 (tentative)

2001 Pa. Ag Symposium, Grantville, thru Oct. 23.

Wednesday, October 24

Managing Price Volatility, Shippensburg, also Oct. 31 and Nov. 7.

Thursday, October 25

Managing Price Volatility, Lebanon, also Nov. 1 and 8.

Friday, October 26

Managing Price Volatility, Lancaster, also Nov. 2 and 9.

Monday, October 29

PFGC Certified Crop Consultant Training, Grantville, thru Oct. 30. Contact Paul Craig, (800) 328-0058.

Tuesday, October 30

Spreadsheets II, Adams County Extension Office, thru Oct. 31.

Tuesday, November 6

Penn State Dairy Nutrition Conference, Grantville, thru Nov. 7.

Tuesday, November 13

Alfalfa Intensive Training Seminar, Boise, Idaho, contact Marvin Hall, (814) 863-1019.

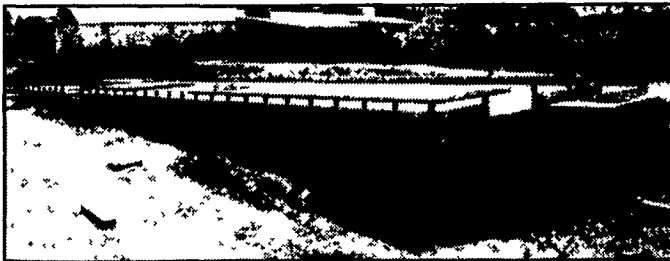
Wednesday, November 14

Pasture Walk. Don and Eugene Chamberlain.

(Turn to Page 26)

Invest In Concrete, Quality That Will Last A Lifetime

Specializing in Manure Storage - Round or Rectangular Inground or Above Ground



Slatted pit for freestall barn

Call for **FREE** estimates and see how affordable concrete walls can be.

PRECISE CONCRETE WALLS, INC.

531 Hollander Rd., New Holland, PA 17557

For all your Concrete Walls and Construction Needs

10' Deep circular manure storage



Contact Roy Sensenig
717-355-0726