

**Indiana Livestock**

Homer City, Pa.

Thursday, September 13, 2001  
Report Supplied By Auction

CATTLE: 85. COWS: STEADY. HEIFERS: STEADY 3.00 LOWER. STEERS: CHOICE 2-3 1190/1415 LBS. 68.00, 70.25. SELECT 1-3 63.00, 65.00. STANDARD 1-2 52.75, 59.75. HEIFERS: FEW CHOICE 2-4 1225/1560 LBS. 64.00, 68.25. SELECT FEW 1-3 62.00, 63.50. STANDARD 1-2 48.25, 56.50.

COWS: BREAKERS 75-80% LEAN 42.00, 45.25. BONERS 80-85% LEAN 38.25, 42.50, LEAN 85-90% LEAN 34.25, 39.00, SHELLS DOWN TO 34.50 & DOWN. BULLS: YIELD GRADE 1 1982 LBS. ONE AT 54.25. YIELD GRADE 2 1645 & 1760 LBS. 51.75 & 52.00. FEW JERSEY'S 36.00, 38.50. FEEDER CATTLE: STEERS: NO MARKET TEST. HEIFERS: NO MARKET TEST. BULLS: NO MARKET TEST.

CALVES: 90. CH 250 LBS. ONE AT 86.00. STANDARD & GOOD 95/110 LBS. 45.00, 77.50. STANDARD & GOOD 65/85 LBS. 57.50, 65.00. FARM CALVES: HOLSTEIN BULLS STEADY. NO. 1 90/130 LBS. 117.50, 142.50. NO. 2 80/130 LBS. 77.50, 115.00. HOLSTEIN HEIFERS: NO. 1 85/120 LBS. 410.00, 550.00. NO. 2 70/85 LBS. 160.00, 370.00. BEEF TYPE BULLS & HEIFERS 85/110 LBS. 115.00, 235.00.

HOGS: 60. BARROW & GILTS STEADY TO 2.00 LOWER. 49-54% LEAN 235/265 LB. 42.25, 43.25. 45-50% 230/275 LB. 39.00, 42.00. 40-45% 220/280 LB. 35.00, 39.75. SOWS: 1-3

240/450 LBS. COUPLE 33.00 & 33.25. FEEDER PIGS: 4. 1-3 40 LBS. 46.00/HD. GOATS: 4. MEDIUM 41.00, 46.00/HD.

**Pennsylvania Livestock Auction**

Waynesburg, Pa.  
Thursday, September 13, 2001  
Report Supplied By Auction

Cattle: STOCK COWS: 40.00-54.50. SLAUGHTER COWS: Utility & Commercial 38.00-48.25; Canner & Boning Utility 39.00-46.00; Cutter & Boning Utility 31.00-37.00; Canner & Low Cutter 36.50-39.00; Shells 35.00 & down.

BULLS: YIELD GRADE 1 1500#-2000# 50.00-60.00; YIELD GRADE 2 1000#-1400# Fat 47.00-58.00.

FEEDER STEERS: M & L 1 300-500# 75.00-100.00; 250-280# 80.00-118.00; M 600-900# 60.00-85.00.

HEIFERS M 1 & L 1 300-500# 84.00-102.00; L 1 400-650# 75.00-90.00.

BULLS M & L 1 300-620# 85.00-104.00.

CALVES: Veal Prime 85.00-103.00; Choice 55.00-97.00; Good 35.00-70.00; Farm Calves #1 Holstein Bulls 90-120# Few 35.00-110.00; #2 Holstein Bulls 80-100# Few 12.50-50.00; Beef — Bull & Hfrs./HD. 50.00-185.00.

HOGS: Barrows & Gilts #1-2 210-255# 46.00-50.00; #2-3 255-280# 40.00-47.00; Sows #1-3 300-500# 31.00-40.00; Feeder Pigs: 1-3 15-20# 5.00-17.00/HD. 1-3 25-35# 10.00-41.00/HD.

LAMBS: High Choice 80-100# 50.00-70.00; Choice 40-75# 85.00-112.00; Feeder Lambs Good 60.00-90.00; Sheep 20.00-40.00; Fat Sheep 39.00 and down.

GOATS: Large 45.00-106.00/HD.; Medium 30.00-60.00/HD.; Small 10.00-37.00/HD. HORSES: Horses 25.00-54.50; Ponies 20.00-50.00.

(Continued from Page A2)

slaughter lambs sold steady to 5.00 lower. Slaughter ewes traded 5.00 lower.

SLAUGHTER LAMBS: Good and Choice 1-3 40-60 lbs 85.00-120.00; 60-100 lbs 65.00-85.00; few 100-150 lbs 55.00-65.00.

SLAUGHTER EWES: Good and Choice Yearlings and 2 year-olds no test. Utility and Good 1-3 20.00-40.00.

GOATS: (All sold by the head) Billies: Large 100.00-120.00. Medium 75.00-100.00. Mutton : Choice and Prime 75.00-100.00. Yearlings: Choice and Prime 60.00-90.00. Nannies: Medium and Large 40.00-80.00. Kids: Choice and Prime 40.00-70.00. Good 20.00-40.00.

**Lancaster County Weekly Cattle**

New Holland, Pa.

Report Supplied By USDA  
Friday, Sept. 14, 2001

	CATTLE	CALVES
THIS WEEK	2145	1644
LAST WEEK	2277	1608
LAST YEAR	2525	1711

CATTLE: Compared to last week's closing prices, slaughter steers closed 2.00 lower. Monday's steer market opened steady but as the week progressed packer and kosher demand became light as orders were being canceled due to the terrorist attacks on the World Trade Center and other areas.

Local holstein steer prices traded .50-1.00 lower. Slaughter heifers were not well tested but a lower undertone noted. Feedlots in the Plains and Midwest reported live cattle at 69.00-70.25 avg 69.71 and 109.00-111.00 avg 110.75 dressed basis. Slaughter cows traded active and prices were steady to 1.00 higher for the week. Slaughter bulls sold steady. Supply included 35 percent steers, 6 percent heifers, 43 percent cows, 8 percent bulls, with the balance feeders.

SLAUGHTER STEERS: High Choice and Prime 2-3 1225-1495 lbs 69.00-72.00, mostly 69.00-71.75, few up to 73.00. Choice 2-3 1095-1495 lbs 67.75-71.50, mostly 67.75-70.75, high dressing 1-2 up to 73.00; 1505-1660 lbs 62.50-67.75.

Select and low Choice 2-3 1075-1485 lbs 65.75-70.00, mostly 65.75-68.60. Select 1-3 1050-1435 lbs 62.25-66.75.

HOLSTEIN STEERS: Choice 2-3 1355-1600 lbs 61.60-63.75; 1710-1790 lbs 58.00-60.10. Select and low Choice 2-3 1200-1595 lbs 59.35-61.60. Select 1-2 1220-1430 lbs 55.35-60.50; 1095-1120 lbs 59.10-59.75 returning to the country.

SLAUGHTER HEIFERS: Select and low Choice 2-3 few 1100-1305 lbs 64.00-69.25. Heiferettes: Commercial and Standard 2-4 few 1375-1410 lbs 60.00-61.00.

SLAUGHTER COWS: Breakers 75-80 percent lean over-1400 lbs 47.00-48.75 low dressing 43.00-47.00 Boners 80-85 over-1200 lbs 44.00-47.00 low dressing 40.25-44.00 Lean (Hi-Yield) 85-88 percent lean over-1200 lbs 41.00-45.75 low dressing 37.00-42.25 Lean 88-90 percent lean over-1000 lbs 38.00-43.00 low dressing 35.00-39.00 Lean

(Light-Wt) 85-90 percent lean 750-1000 lbs 37.00-41.25 low dressing 35.00-38.00  
SLAUGHTER BULLS: Yield Grade 1, 1110-2110 lbs 55.00-62.00. Yield Grade 2, 1050-2505 lbs 48.00-57.75.

CALVES: Compared to last week vealers sold steady to 3.00 higher. Large slaughter calves were not well tested. Holstein bulls suitable for special-fed veal barns traded 5.00-8.00 lower from last week. Holstein heifers were very active and prices were sharply higher setting another record high for Lancaster County.

VEALERS: Standard and Good 90-115 lbs 40.00-55.00. Utility 55-105 lbs 11.00-40.00.

SLAUGHTER CALVES: Good and Choice few 210-420 lbs 70.00-92.00; few 455-555 lbs 64.00-69.00.

RETURNED TO FARM: Holstein bulls 95-125 lbs 125.00-159.00; 80-90 lb 105.00-137.00; 75-80 lbs 117.00. Plainer type bulls 80-120 lbs 100.00-140.00; 75-80 lbs 70.00-75.00, weaker calves 70-110 lbs 25.00-67.00. Holstein heifers 80-115 lbs 500.00-690.00; individual 95 lbs 705.00. Plainer type heifers 80-115 lbs 200.00-490.00; 70-75 lbs 100.00-230.00; pen 74 lbs 445.00; 65 lbs 100.00-160.00. Beef type bulls and heifers 70-120 lbs 150.00-235.00.

**See Lancaster Farming CowCam**

Visit our Website at [www.lancasterfarming.com](http://www.lancasterfarming.com)

FARM SHOW COMPLEX  
2301 NORTH CAMERON ST.  
HARRISBURG,  
PENNSYLVANIA 17110-9408  
PHONE (717) 787-2905

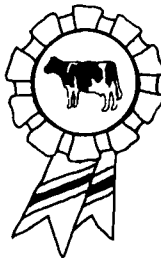


**September 23 - 27**

**THE SIX BREED SHOW OF ALL AMERICANS**

~ Plus ~

- \$1,000 Scholarship!** Jr. Dairy Management Contest - Tuesday
- All Youth Eligible** Youth Showmanship Contest - Sunday
- Featuring Guernsey Items** All-Dairy Antiques & Collectibles Show  
Sat. 10a.m.-5p.m.; Sun. 10a.m.-8p.m.; Mon. & Tues. 8a.m.-5p.m.; Wed. 8a.m.-8p.m.
- Silent Auction!** Commercial Exhibits & Trade Show - Daily
- Energy Exhibitor Eligible** Drawing for a Moritz Livestock Trailer
- Quality!** Eastern Elite Holstein Sale  
7 p.m., Wed., Sept. 26



**SCHEDULE OF EVENTS**

**Saturday, September 22**

10:00 a.m. to 5:00 p.m. - Dairy Antiques & Collectibles Show, Dairy Activity Center  
6:30 p.m. - Pennsylvania Dairy Princess Pageant, Sheraton Harrisburg East

**Sunday through Thursday - September 23 thru 27**

12:00 Noon to 8:00 p.m. - Country Craft Market, Dairy Activity Center

**Sunday, September 23**

10:00 a.m. to 8:00 p.m. - Dairy Antiques and Collectibles Show, Dairy Activity Center  
1:00 p.m. - Youth Showmanship Contest, Large Arena  
5:00 p.m. - Senior Division Fitting Competition, Small Arena  
6:00 p.m. - Pennsylvania Junior Guernsey Breeders Meeting & Social, Room D  
7:00 p.m. - Pennsylvania Ayrshire Youth Meeting & Social, Room E  
7:00 p.m. - Pennsylvania Junior Jersey Meeting, Room C  
7:00 p.m. - Careers and Opportunities Night, Dairy Activity Center  
8:00 p.m. - Junior Dairy Show Olympics, Small Arena

**Monday and Tuesday - September 24 thru 25**

8:00 a.m. to 5:00 p.m. - Dairy Antiques and Collectibles Show, Dairy Activity Center

**Monday, September 24**

8:00 a.m. - Invitational Youth Dairy Cattle Judging Contest (4-H, FFA, and Collegiate) Small Arena  
8:00 a.m. - Pennsylvania Junior Dairy Show, Large Arena  
7:00 p.m. - Judging Contest Awards Banquet, Sheraton Harrisburg East

**Tuesday, September 25**

8:00 a.m. - All-American Ayrshire Show, Large Arena  
9:00 a.m. - Pennsylvania Fall Holstein Championship Show, Large Arena  
9:00 a.m. to 3 p.m. - "Meet a Cow" Day, Maclay Street Lobby  
10:00 a.m. - Junior Dairy Management Contest, Second Floor, Main Building  
10:00 a.m. - Pennsylvania 4-H and FFA Dairy Judging Forum, Small Arena  
3:00 p.m. - All American Milking Shorthorn Show, Large Arena

**Wednesday, September 26**

8:00 a.m. to 8:00 p.m. - Dairy Antiques and Collectibles Show, Dairy Activity Center  
9:00 a.m. - National Guernsey Show - Large Arena  
9:00 a.m. - Eastern National Brown Swiss Show - Large Arena  
6:00 p.m. - All American Buffet - Dairy Activity Center  
7:00 p.m. - The Eastern Elite Holstein Sale, Small Arena

**Thursday, September 27**

8:00 a.m. - Eastern National Holstein Show, Large Arena  
8:00 a.m. - Mid-Atlantic Regional Jersey Show, Large Arena

\*\*\*\* - Supreme Champion (selection following the Holstein and Jersey shows), Large Arena

**PLAN TO ATTEND!**

**ATTENTION FARMOWNERS**

ARE YOU PAYING TOO MUCH FOR FARM INSURANCE?



Find out by calling

**1-888-647-BARN (2276)**

We know farming. Farm Family was founded to serve the unique insurance needs of farmers and the agribusiness community. Many of our agents and employees have agricultural backgrounds which helps us understand the daily challenges of farming. Our business is protecting your business from the pitfalls associated with farming.

Call Farm Family today for a free quote



**Philip Baker, Agent**  
Serving Pennsylvania  
888-647-2276 Toll Free

Property/casualty insurance products offered by United Farm Family Insurance Company, Glenmont, NY, in MD and PA, and Farm Family Casualty Insurance Company, Glenmont, NY, in CT, DE, MA, ME, NH, NJ, NY, RI, VT, and WV

**Painting**

All Types Interior/ Exterior Painting  
\* Agricultural Buildings, Industrial Buildings, Residential Homes, Church Buildings, Historical Buildings, Etc.

**Specializing In:**

- Spray Painting
- Hand Painting
- Water Blasting
- Roof Restoration and Coating
- Roofing Systems of Special Coatings
- Polyurethane Foam for Roofs
- Cool Roof Coatings {save up to 20% on cooling costs}
- Deck Restoration and Sealing
- Stone and Brick Restoration
- Fences

**Capital Painting**  
Call 717-768-0979

Free- Estimates Roof Inspections  
Painting Consultations  
Formerly Partner of B&M Fisher Painting