

National Dairy Women's Conference Set

TEMPE, Ariz. — A "One-Step Ahead" National Dairy Women's Conference will be conducted here Nov. 8-10, at Wyndham Buttes Resort.

Today's women dairy producers recognize the challenging roles they face. Changes in management trends and production technologies require them to evaluate new management systems, consult with dairy support professionals, and implement improvements with a keen eye on day-to-day performance of the operation.

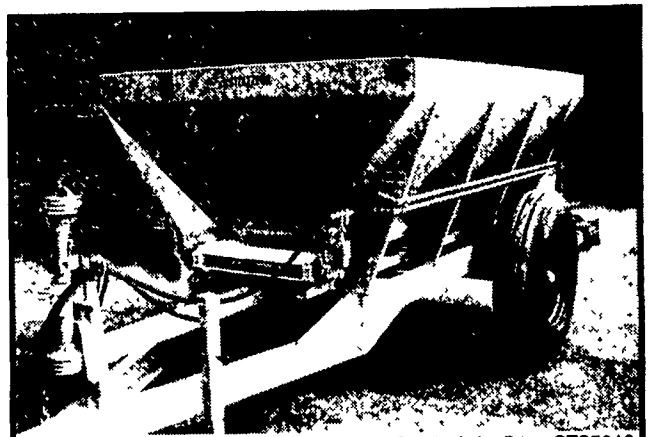
Monsanto Dairy Business has assembled a group of experts to help women dairy producers stay "One-Step Ahead" on the path to success by tackling some of today's practical dairy issues, including:

- **Marginality — Making Sound Economic Decisions on Your Dairy** by Dr. Sandra Godden — University of Minnesota, Assistant Professor.
- **Are Facilities Limiting the Profit Potential of Your Dairy?** by Dr. Dennis Armstrong — University of Arizona, Extension Dairy Specialist.
- **How Environmental Regulations May Affect Your Ability to Farm** by Mr. Dennis Frame — University of Wisconsin, Associate Professor.
- **A Look At Milk Quality on Your Farm** by Dr. Hank Spencer — Monsanto Dairy Business, Technical Service Specialist.
- **What Does It Take to Have a Successful Heifer Program?** by Dr. Magdalena Kurz — Monsanto Dairy Business, Area Market Manager.
- **High Production and Sound Reproductive Performance** by Dr. Charlene McLaughlin — Monsanto Dairy Business, Technical Service Specialist.

Conference activities also include a producer panel where Linda Lussier, Lussier Dairy Inc., Hawthorne, Fla.; Maria Nye, Mountain View Dairy of Delta Utah; Susan Pierson, Sar Ben Farms Inc., St. Paul, Ore.; and Zeba Schouten, MJ Schouten Dairy, Hico, Texas, will share personal dairy experiences on herd health, nutrition, financial record keeping, and employee management.

In addition to an opportunity to mingle with some of today's top dairy industry leaders, come prepared for fun and laughter with both old-time friends and new-found acquaintances you'll meet in Phoenix. We hope you will join us for this year's National Dairy Women's Conference to learn how we can help keep producers "One-Step Ahead" on the path to success.

For more information about the conference or to request a registration packet, please contact Colleen Walsh at (816) 512-2373 or via e-mail at walsh@fleshman.com.



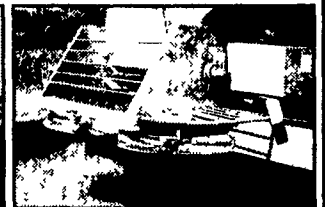
Single Axle, 5 ton STS5010

The **STOLTZFUS TIME SAVER STS 5010**

**Side-dresser With A
12" Belt for Mulch,
Compost, Lime, Sand,
Wood Shavings...**

Plus

**Dual Spinner Unit For
Lime And Fertilizer**



Interchangeable belt and dual spinners

 **Stoltzfus Spreaders**

C.U. STOLTZFUS MFG., INC.

121 Morgan Way, PO Box 527, Morgantown, PA 19543

Phone: 800-843-8731

www.stoltzfusmfg.com