

7511 Allentown Blvd.  
Harrisburg, PA 17112

**75 TRUCKS  
IN STOCK**

**AFFORDABLE  
CARS AND TRUCKS, INC.**

**717-652-1925**  
FAX 717-652-4888

www.affordablecarandtruck.com

**"You Gotta Believe!!"**

New Exit #72A, Rt. 81 N; Rt. 22 East of Harrisburg; 3 Miles North of Hershey Park

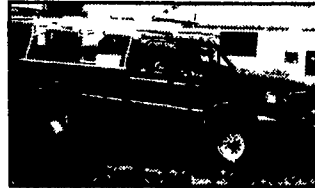
**94 Ford F250**  
H.D. XL Ext. Cab, 4x4,  
Powerstroke, Turbo  
Diesel, 5 Speed, AC,  
Stereo, Only 45,000  
Local Actual Miles,  
Flawless Truck!  
**\$16,995**



**99 Ford F350**  
XLT Lariat 4x4, Crew  
Cab, 7 3 Powerstroke  
Turbo Diesel, 6 Speed,  
373 Rears, AC, PW,  
PDL, Cruise, CD Stereo,  
& More, Flawless, Black  
Beauty, 80,000 Mi  
**\$25,995**



**93 GMC 2500 H.D. 4x4 \$9,850**  
**90 Chev 2500 H.D. 4x4 \$7,495**  
Both 8600 GVW, 100,000 Mi. &  
Showroom Cond., Silverado's AT, AC,  
Full Power Options Also 1994 5-Speed.



**95 Ford F350 XLT 4x4,**  
7 3 Powerstroke, Diesel, AT, AC, PW,  
PDL, Stereo, All Black Orig Paint,  
Truck Is Immaculate! 130K, Alum  
Racks Sold Separately! **\$14,995**



**93 Ford F250 XLT,**  
4x4, HD, 7.3 Int. Turbo Diesel, 5 Spd.,  
AC, All Options, Only 70,000 Miles,  
Absolutely Flawless Truck & Rare Find!  
**\$12,500**



**96 Ford F350 4x4 Crew Cab**  
7 3 Int, Power Stroke Dsl, 5 Speed,  
Stereo, Cloth Seats & More, Only  
10K, Like New  
**\$16,500**



**97 Ford F250 XLT 4x4,**  
Ext. Cab, Longbed, 7 3 Powerstroke  
Diesel, 5 Speed, AC, PW, PDL,  
Stereo, Alloys, Absolutely Beautiful In  
& Out, Only 90,000 Mi. **\$18,995**



**98 Dodge Ram 3500  
SLT Laramie**  
4x4, Quad Cab, Dually, Cummins 24V  
Turbo, 5 Spd., AC, Leather, PW, PDL,  
All Highway Pampered, 100,000 mi.,  
must see & drive! **\$21,900**



**93 Ford F250 XLT Ext. Cab,**  
Longbed, 4x4, 7 3 International  
Diesel, AT, AC, PW, PDL, Stereo, Tilt,  
Cruise & More, Real Clean Truck,  
Local 2nd Owner, 119K **\$12,595**



**95 Dodge Ram 2500 4x4 SLT  
Laramie** Cummins Turbo Diesel, AT,  
A/C, PW, PDL, P Seat & More, Only  
79,975 1-Owner Miles, Perfect In  
Every Way **\$16,995 - \$16,500**



**96 Dodge Ram 2500 HD**  
4x4, Laramie SLT, Cummins Turbo  
Diesel, AT, AC, PW, PDL, Tilt, Cruise &  
More, All Black/Gray Cloth, Like New  
Bumper To Bumper, 120K  
**\$18,995**

**87 Peterbilt**  
**\$6,900 OBO**

Rebuilt 8.3 Cummins, 6 Speed, 29,700 GVW,  
Good Condition With 24 Ft. Flatbed.  
**(717) 626-1394**

**'90 GMC  
Topkick**  
**\$8,500**

Available  
in October

5 Speed, Cat Diesel, 26,000 GVW, Air Brakes,  
20' Van, 2,500# Lift Gate, Translucent Roof,  
E-Track, 335,000 Miles, Good/Fair Cond.  
Call **717-733-4513**  
**7:00 A.M.-4:00 P.M. M-F**

**FOR SALE**

2000 Cargo Mate 24' enclosed trailer, 9900  
GVW 93" rear ramp door, 48" side entrance  
door, very low miles, plywood lined interior,  
**\$5,900**

**OF MYERTOWN**  
800-451-5240  
Alvin, Bill or Dave

**35 TRUCKS AND TRAILERS**

24' flatbed w/mounted ratcheting tiedowns, \$1450. MAXON tuckaway liftgate, \$850 Chester Co., 610-399-5184.

1986 Peterbilt cab over, double bunk, one owner, tandem drive, 700,000+ miles, wet-line, 425 Cat, 15 spd road ranger, dual exhaust, 1122.5 tires, good condition. Call 8am-5pm, 717-626-5466

'79 Ford 8000 dump truck, \$4000. 717-653-5534 after 3:30pm

1979 F600 with 14 ft box, 5 speed trans, needs some work, \$400 OBO. 717-432-7930.

'95 Ford XL F150 4x4, 302 EFI, 5 spd, PS, PB, air, AM-FM, 74,000 orle owner miles, new radiats, excellent condition, \$9,300. 717-733-2873

'90 Ford Ranger XLT, long bed, V6 auto, PS, PB, AM-FM, dark green, 76,000 miles, excellent condition, \$3,975. 717-733-2873

'94 Ford XL F150 super cab, 2WD, 300 EFI, 5 spd, PS, PB, AM-FM cassette w/cap, excellent condition, \$6,700. 717-733-2873

'95 GMC SL 1500, 4x4, 4.3 V6, 5 spd, PS, PB, AM/FM, 6,100 GVW, 44,000 miles, \$9,900. 717-733-2873

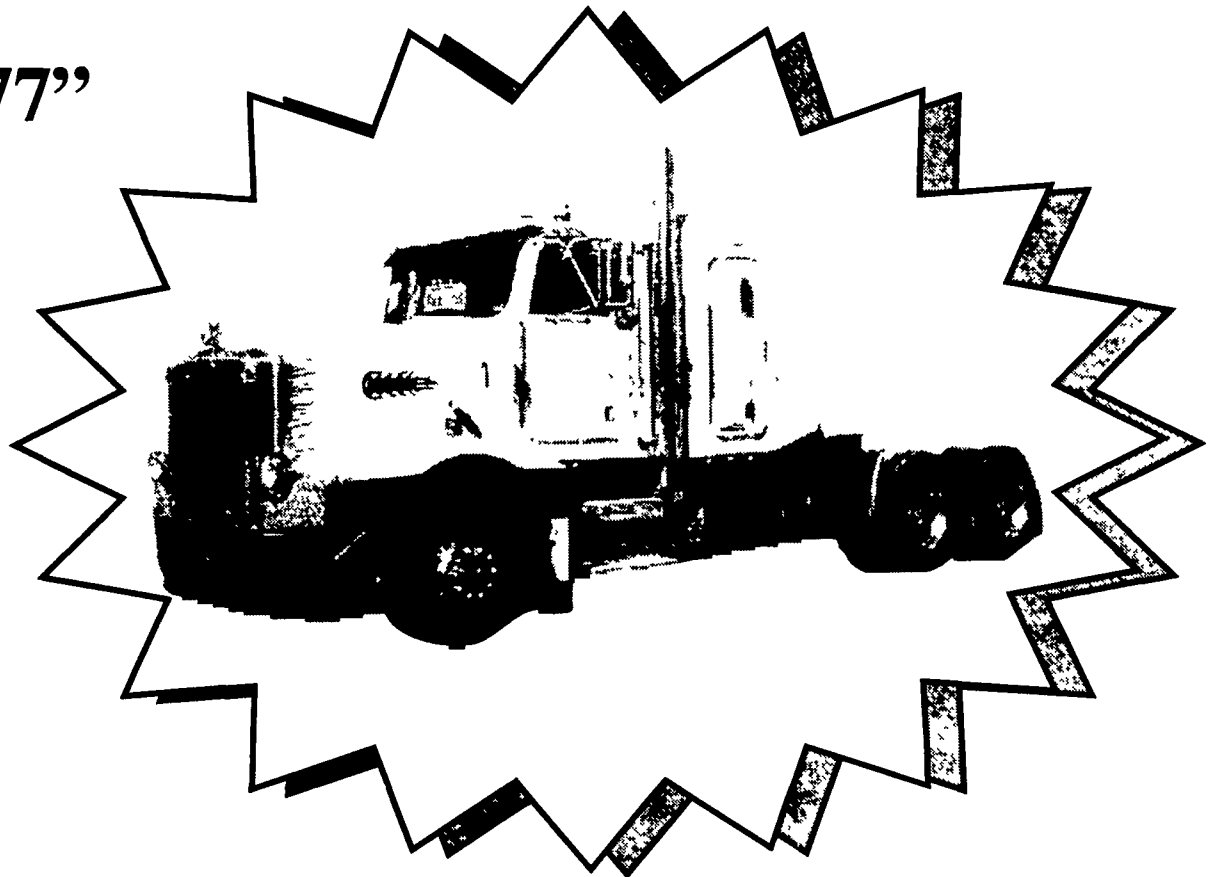
'95 Ford XL F150 4x4 super cab, short bed, 300 6 cyl. 5 spd, PS, PB, air, new radiats, 55,000 miles, excellent condition, \$10,500. 717-733-2873

'92 Chevy Silverado 2500 extended cab, 2WD, 454 auto, PS, PB, cruise, tilt, air, towing package, 8,600 GVW, 67,000 miles, excellent condition, \$8,975. 717-733-2873

2000 Stoll livestock trailer, 24' gooseneck, rubber floor, new, \$7,000. 410-790-5619.

**Peterbilt (1991) "377"**

- 36" Sleeper
- Cat 3406B (350 H.P.)
- 9 Speed Overdrive Transm.
- Air Ride Suspension
- Jake Brake
- New Drive Axle Tires
- State Inspected
- Aluminum Wheels
- Low Mileage



**\$12,900**

Stock #303259

2355 North Reading Road  
Denver, PA 17517  
Exit 21 of PA Turnpike  
1-800-769-9887



**SELECTRUCKS of Harrisburg**

4400 Chambers Hill Rd.  
Harrisburg, PA 17111  
Exit 19 of PA Turnpike  
1-800-871-1935