

**SANDBLAST EQUIPMENT - AIR COMPRESSORS**



- 175 Ingersoll Rand Detroit 353 Diesel \$2,500
  - 1986 Ingersoll Rand 750 C FM L-10 Cummins \$7,500
  - 1990 Ingersoll Rand 185 J.D. Diesel \$4,500
  - 1988 Ingersoll Rand 175 J.D. Diesel \$4,500
  - 1987 4BT-3.9 Cummins Diesel Engine Power Unit \$1,500
  - 800 Lb Blast Pot with Hose and Nozzle, Rebuilt \$1,200
  - 36x24 Blast Cabinet With Dust Collector \$825
  - (2) 600 Lb Blast Pot with Deadman \$800
  - 1980 Ingersoll Rand 185 J.D. Diesel \$3,800
  - 105 C FM Ingersoll Rand Gas Powered \$800
- Always Buying Blast Equipment and Compressors**  
 NEW AND USED Sandblasters,  
 Blast Cabinets, and Air Compressors  
 Repairs on Air Compressors &  
 Sandblast Equipment - Trade-ins Welcome
- Titan Abrasive Systems, Inc.**  
 570/648-4774

**1A CONSTRUCTION EQUIPMENT**

For rent/sale. 14 ton R.O. Stinger on a 1990 Ford 8000. \$1985 monthly, \$43,500 to buy. 610-987-3798 or 215-285-9215

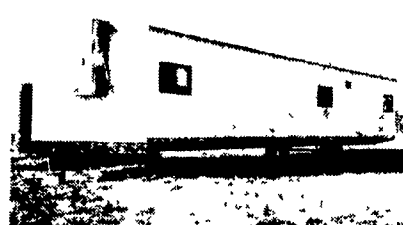
Ford Backhoe, 1973, 4500 series, parts or whole. 732-657-3777.

Cat D-8, hydraulic blade, excellent undercarriage, rebuilt motor, \$4800. 607-225-4320

Takeuchi TB35S mini excavator, 7000lbs, rebuilt engine, new paint, backfill blade, plumbed for hammer, \$8900. 717-859-3501

2000 ft, 3 ft wide metal rollers, best offer. 717-394-1078

Forklift 10,000 lb Clark, solid tire, LPG, side shift, old but runs good, \$1800. 410-574-4700



Acton 12'x60' Mobile Job Trailer  
**\$10,500**  
 717/468-8811



SK024 Kobelco, 2,700 hrs, rubber track, blade, diesel, good condition  
**\$9,750 OBO • (717) 626-1394**

**Jonestown Ag Repair Shop**

Complete Skid Loader Repairs Our Specialty



**NO FLAT TIRES**  
 Guaranteed "Soft-Fill"  
 Good prices, excellent wear

Galaxy skid loader tires & other brands  
 Painting & Sandblasting

170 Old Rt. 22, Jonestown, PA 17038  
 Darvin Weaver

717-865-9427 717-865-9096 Fax

**RUNNING SAWMILL**

Forestall modular mill with vertical edger, 56 inch saw, 150hp motor

- 60 foot Fulgum vibrating conveyor
- Morbark 48" chipper with 150hp motor
- 30 foot green chain conveyor
- 20 foot roof top conveyor, 3 strand
- 12 foot transfer deck, 4 strand
- 20hp air compressor
- 30 foot log deck, 3 strand to the debarker
- HMC debarker with eveneder & bark conveyor
- 30 foot log deck to mill
- Berlin machine band resaw
- 213 dairy feed
- Webster vibrating conveyor
- All bark & sawdust conveyors, motors, disconnects, etc.
- 235KW generator set

540-721-2150 days • 540-721-2643 nights

**Binkley & Hurst Bros. Inc.**  
**AT YOUR SERVICE!**  
**Dig with a GEHL!**

Compact Excavator from Binkley & Hurst Bros. Inc.

**DISCOUNT SAVINGS ON NEW RENTAL RETURN QUALITY GEHL EXCAVATORS!**

Call Binkley & Hurst Today  
**1-800-414-4705**



Closed Labor Day!

**Model GE 342 Rental Return**

- Digging Depth of almost 11 feet • Rubber tracks • Dozer blade
- Great digging force • Tilt cab for easy service access
- 24" & 12" Trenching buckets

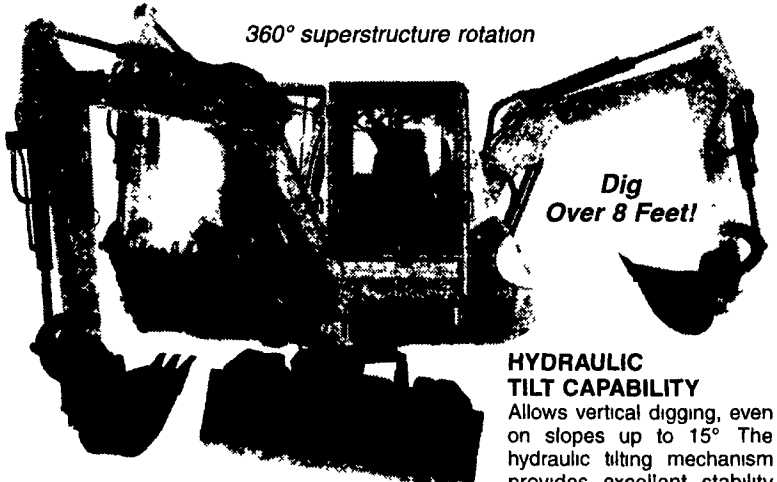
List Price Over \$40,296

**DISCOUNT RENTAL RETURN PRICE**  
**\$29,500**

Ask about standard rate financing!

Want to dig a straight ditch on a hillside slope? You need a **GEHL EXCAVATOR** from Binkley & Hurst Bros. Inc.

**IN STOCK - GEHL MODEL GE222**



360° superstructure rotation

Dig Over 8 Feet!

**HYDRAULIC TILT CAPABILITY**

Allows vertical digging, even on slopes up to 15° The hydraulic tilting mechanism provides excellent stability under difficult conditions. It's available on Models 222, 292 and 362

**RUBBER TRACKS** are great for lawn travel Ideal for working in cemeteries with steep slopes & landscaping.

**BINKLEY-HURST BROS. INC.**  
 Fax 717-626-0996

133 Rothsville Station Rd.  
 P.O. Box 0395  
 Lititz, PA 17543-0395  
 (717) 626-4705  
 1-800-414-4705



**Hyman Equipment**

See Our Ad In Farm Equipment Section!

Baltimore, MD

410-574-4700 Days 410-337-3570 Eves

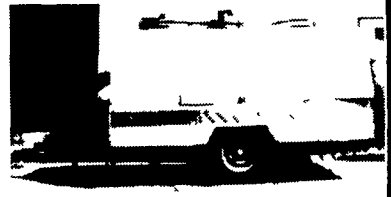
Check out our website [www.hyeq.com](http://www.hyeq.com) For Entire Inventory



50 Ton P&H Very Good Cond., 2 Winches, Full Boom \$110,000

**375 CFM G-D COMP.**

Turbo Cummins, Low Hours \$3,500



17.5 Ton Bantam Good Cond. \$12,000

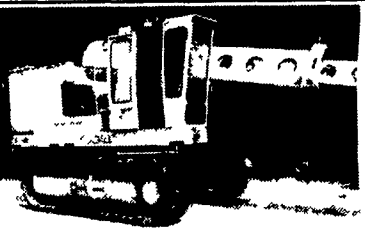


40,000# Clark @ 36" Rebuilt Detroit Dsl. \$30,000 Also 46,000 lb. Hyster, 8' Forks \$20,000

**Bridge Cranes**

- 30' Span 2.5 Ton.....\$2,000
- 32' Span 5 Ton.....\$3,000
- 46' Span 6 Ton.....\$5,000
- 70' Span 10 Ton.....\$6,000

All With Runways



GRADALL G660E, 1990 Turbo Cummins, V.G. Cond. \$27,500

**JERRE MARTIN REPAIR**

391 N. Farmersville Rd., Ephrata, PA 17522 (Just minutes off RT 222)

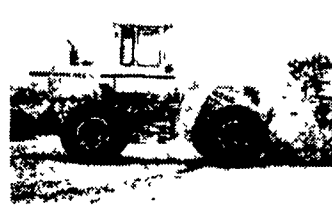
(717) 859-3283

Financing Available

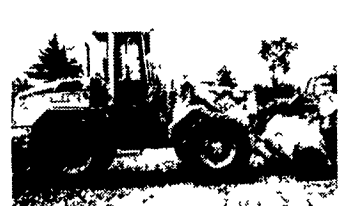
Rentals Repairs



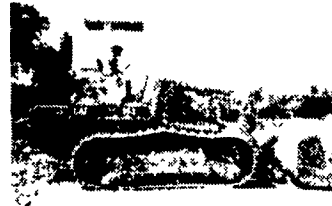
'98 Cat D5 MXL, 1800 Hrs \$70,000



'89 JD 624E \$35,000



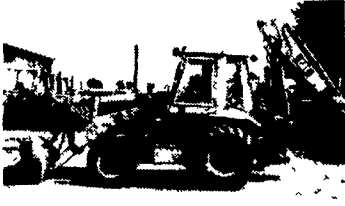
'98 JD 344 H 1200 Hrs \$45,000



'92 Cat 963 \$47,000



'96 Cat 963B 10,000 Hrs. \$80,000



'86 CAT 416 E-Hoe, 4x4, Choice of 2 \$15,500

Sales Service

Road Service Available Now Custom Repairs On All Makes Construction Equipment

**WE ARE BUYERS FOR LATE MODEL CONSTRUCTION EQUIPMENT NEEDING REPAIRS**

- Case 850B, good condition.....\$13,000
- '93 Cat D5C w/6-way blade.....\$32,000
- '90 Cat D6H, straight blade w/tilt, diff steer.....\$62,000
- Cat 613 Scraper.....\$13,500
- '95 Cat 939, good cond.....\$38,000
- '81 Cat 943.....\$27,000
- Cat 955K crawler loader, 90% S.A.L.T. U/C.....\$16,500
- '96 Cat 963B, 10,000 Hrs.....\$80,000
- '89 JD 455G crawler loader, cleaned & painted.....\$22,000
- '94 JD 455G.....\$27,000
- '98 JD 544H 1610 hrs., J.R.B. coupler.....\$75,000
- JD 755 crawler loader.....\$19,500
- '74 JD 860A motor scraper.....\$16,000
- Ingersoll Rand, SD100DD Roler.....\$28,000
- Available: Rebuilt exchange motor for Cat 953.....\$5,000/Exchange
- Kubota KX101 Excavator.....\$14,000
- '89 Dresser TD12.....\$16,500
- '91 Dresser TD7G w/6 way blade.....\$20,000
- Dresser 175C Crawler Loader, Like new U/C.....\$11,500
- '87 7038 Sky Track high lift.....\$25,000
- '79 Lull 844, extend-a-boom w/gas engine.....\$16,000
- '97 Manitou 1130L telescopic boom lift, 6,000 lb 34' lift.....\$27,000
- Terex Wheel Loader.....\$7,500
- '89 Liebherr 621B crawler loader, rebuilt trans.....\$25,000