

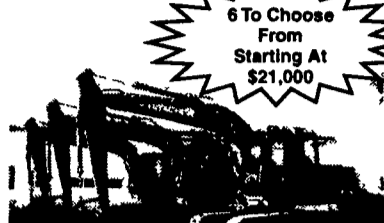
1A CONSTRUCTION EQUIPMENT

NEW ADDITIONS

- JD 490 D Excavator Long Stick
- JD 555 Crawler Loader, 4 in 1 Bucket, Backhoe Attachment \$1,750
- 94 Hitachi EX30, 6600lbs, side swing boom, rubber tracks \$12,500
- 98 Thomas T173H, Hi-Flo, 800 hrs \$10,500
- JCB 165 Skid Loaders, 900 hrs, 2 to choose from \$9,500
- 98 JCB 532 Extenda Boom



87 Komatsu PC150LC-3, Thumb, 8'6" Wide \$19,500



6 to Choose From Starting At \$21,000

94 Hitachi EX120-3, 5000 Hrs \$28,500



87 Cat 953, Cab, 90% UC, 4-in-1 or GP Bucket \$38,000

93 Hitachi EX120-2, 4500 Hrs, 3rd Valve w/Plumbing, New Paint \$27,000

91 Hitachi EX120-2, 5700 Hrs, Thumb New Paint \$26,000

91 EX120-2, High Hrs \$21,000

90 EX120-2, 3rd Valve w/Plumbing \$23,500



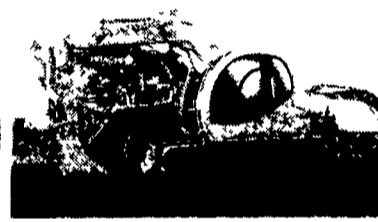
93 Cat 312, 4700 Hrs, New Paint \$33,500

96 Cat 312, Long Stick, High Hrs \$27,500



89 JD 455G, 4100 Hrs., Good U/C w/9300G Backhoe Attachment, 1 Owner \$24,000

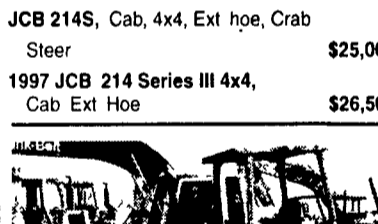
96 JD 7775, 2800 Hrs., Cab Encl, Weight Kit \$9,900



1994 Kobelco SK60, Rubber Bolt-On Pads on Steel Tracks, Backfill Blade \$22,500

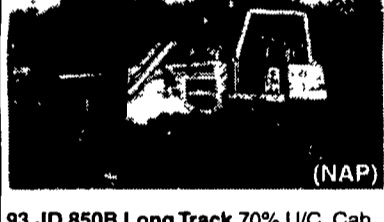
97 Kobelco SK200LC, 3000 Hrs, 3rd Valve \$47,500

91 Cat EL200B, 3rd Valve, Quick Coupler \$29,500



JCB 214S, Cab, 4x4, Ext hoe, Crab Steer \$25,000

1997 JCB 214 Series III 4x4, Cab Ext Hoe \$26,500



93 JD 850B Long Track 70% U/C, Cab w/AC, 5600Hrs \$42,000



1993 Cat D4C Series II \$27,500

Komatsu D20A-6, 6-way Blade \$11,500

Liebherr TR721C, Cab \$15,500

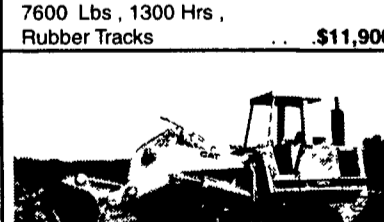


Link Belt 1600, 15,000 lb Excavator, backfill blade \$13,500

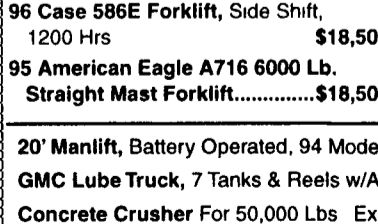
Daewoo DH50, 11,000 lb Excavator, Cab \$13,500



84 Cat 518 Log Skidder, w/Winch, Good Tires \$18,500

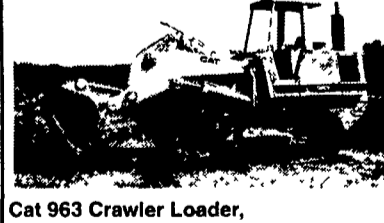


96 Daewoo 035 Mini Excavator, 7600 Lbs, 1300 Hrs, Rubber Tracks \$11,900



96 Case 586E Forklift, Side Shift, 1200 Hrs \$18,500

95 American Eagle A716 6000 Lb. Straight Mast Forklift \$18,500



Cat 963 Crawler Loader, Open ROPS \$33,000

87 Cat 963, Cab \$44,000

83 Cat 973, Cab, New Tracks, Rebuilt Trans \$38,000

79 JD 755, Rebuilt Hydros \$21,000

- 20' Manlift, Battery Operated, 94 Model \$2,700
- GMC Lube Truck, 7 Tanks & Reels w/Air Compressor \$13,500
- Concrete Crusher For 50,000 Lbs Excavator \$4,500
- Coleman Light Tower, Kubota Dsl \$3,500

Above payments are with approved credit for 60 months no penalty for early payoff 0% Down 2 Payments Due Immediately \$1 Buy Out Trades welcome

Rentals Available Day, Week, or Month Financing and Lease Purchase Available No Sunday Calls

Weaco Equipment
Ask for Jay Weaver
Reinholds, PA 717/336-7375

RUNNING SAWMILL

Forestall modular mill with vertical edger, 56 inch saw, 150hp motor

- 60 foot Fulgum vibrating conveyor
- Morbark 48" chipper with 150hp motor
- 30 foot green chain conveyor
- 20 foot roof top conveyor, 3 strand
- 12 foot transfer deck, 4 strand
- 20hp air compressor
- 30 foot log deck, 3 strand to the debarker
- HMC debarker with evenender & bark conveyor
- 30 foot log deck to mill
- Berlin machine band resaw
- 213 dairy feed
- Webster vibrating conveyor
- All bark & sawdust conveyors, motors, disconnects, etc.
- 235KW generator set

540-721-2150 days • 540-721-2643 nights

BUYING & SELLING USED CONSTRUCTION EQUIPMENT, NEW & USED PARTS & ATTACHMENTS

CALL

H.E.L.P., INC.
(717) 469-0039

(717) 469-7679 FAX

Specializing In Caterpillar Parts also available for Case, Fiat, IHC, Komatsu, Deere, Etc.
ALL PARTS AT DISCOUNT PRICES!

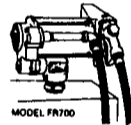
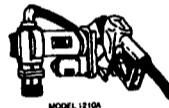
****PARTS LOCATING SERVICES****
Call Us For Your Parts & Service Manual Needs

HEAVY EQUIPMENT LOADER PARTS, INC.

10070 Allentown Blvd. Grantville, PA 17028

FILL-RITE PUMPS
Farm/Construction

MODEL FR1210
12 V DC
\$222.00



MODEL FR 700
115 V AC
\$315.00

MODEL FR 112
\$99.00



Master Card/VISA
www.cpt-online.com
FREE DELIVERY WITHIN OUR AREA

Most pumps in stock.



FORKLIFTS
For Sale or Rent



1995 Hyster 3,000 Lb., 3-Stage Mast, Side Shifter, Cushion Tire, LP Gas, 4500 Hrs. \$7,900

Call For Pricing On New, Used and Reconditioned Forklifts

- Used Forklift Mast For Back Of Tractors
- Heavy duty fork extensions. Call For Prices
- Don't trade or throw out that old engine. Have it overhauled for a fraction of the cost of new! All work is guaranteed.
- Skid Loader & Forklift Rentals

SAM'S MECHANICAL SERVICE

SAM STOLTZFUS
5917 Plank Rd.
Narvon, PA 17555
For Service Calls
717-442-9334

Pipe threaders: Beaver geared threaders 2, 2 1/2, 3, 4, 5, 6, whole set \$500. 215-416-3157

1982 Cat 953 LGP, good running cond, \$32,500. Case 580SK, loader backhoe, 4WD, cab, extend-a-hoe, \$23,500. E-mail pictures avail 301-668-6013

1995 Case 580 Super L, 4x4, cab, e-hoe, 4,400 hrs, new rubber, \$25,000. 724-667-8613.

Northwest crawler crane, model 6, runs good, 302-593-8593, 684-4898.

- '98 Power Screen Chleffen screening plant, like new \$53,000
- Fiat Allis 4 yd. rubber tire loader \$13,000
- Hough 100 4 yd. loader, Cummins \$13,000
- 1066 Kohring 2 bkt V-12-71 \$20,000 offer
- Kohler 25KW generator, like new \$3,500
- JD690B rblt motor \$12,000
- Gardner Denver air tugger winch \$1,500
- '78 Dresser TD25C U/C 60% \$8,900
- Welder DC 300 amp, HD \$3,500
- Hydraulic shoring system for trench w/pump, 8'x48" \$975
- Garwood 3/4 yd drag line \$5,500
- IH bucket truck, Cat diesel, auto trans, very good \$5,500
- JD 410, 1978, very good \$12,000
- Dresser 520B, RT loader, 1986, low hrs \$18,500

PA TRACK & WELDING

Complete Undercarriage Repair
New/Used Parts / All Makes

FOR SALE

- 1 set) 951C/955K/L Track Groups, Good Rails, Excellent P&B, Assem w/New 15" 2 Bar Pads. Will Fit JD-655 Also \$2100/set
- 1 set) 941 Track Groups, New P&B, Assem w/14" Reg. Pads. \$1900/set
- 1 set) 951/955/953 Reshelled Bottom Rollers 6)SF, 6)DF \$1600/set
- 1 set) D-3B Rails Only, New P&B, Split Links \$850/set
- 1 set) 955L Track Groups, 8" Pitch / Turned P&B, 17" 2 Bar Pads \$1600/set
- 1 set) New 963 Track Groups, Lubed Pro-Line Rails, Assem. w/New 18" 2 Bar Pads \$4400/set

Call 1-888-387-2510

OR

814-383-2510

- #7929 Case 1840 Uniloader, 1999, Aux hyd, drt bkt, 300 hrs, very clean \$15,500
- #7926 Case Loader Backhoe, 1987, 2wd, Cab, Ext, tires good \$15,900
- #7922 Case 9020 Excavator, 1993, 36" bkt, 6400 hrs, good cond \$35,900
- #7923 New Holland LX885 Skidloader, 1997, cab, good tires, tracks, 2500 hrs \$16,900
- #7895 Case 450 C Dozer, 1989, new undercarriage, 5800 hrs \$19,000
- #7873 Case 85XT uniloader, 1999, Cab w/heat, 750 hrs \$22,900
- #7894 Case 680K Loader Backhoe, 1985, 2WD, Cab, Ext. Hoe \$14,900
- #7786 Case 580L Loader Backhoe, 1998, 4WD, Cab, Ex, 1274 Hrs \$43,900
- #7668 Gradall G660 Excavator, 22,000 Miles, 422 Hrs., 36" & 60" Buckets \$17,900
- #7699 Case 580K Loader Backhoe, 1987, 2WD, Can, Ext. \$17,500
- #7822 Case 580C Loader Backhoe, 1977, 2WD, Can, Std, Very Good Cond., 6300 Hrs. \$10,900
- #7726 Case 780D Loader Backhoe, 1990, 2WD, Can, Ex, 4-N-1 Bkt \$18,900
- #7723 Case 1845C Uniloader, 1986, Aux. Hyd, Drt. Bkt, New Tires, 2740 Hrs. \$13,900
- #7729 Case 580SL Loader Backhoe, 1995, 4WD, Cab, A/C, Stereo, Deluxe Int, Ex, 3320 Hrs. \$36,900
- #7519 Case 580SL Loader Backhoe, 1997, 4WD, Cab, Ex, 2332 Hrs. \$43,900
- #7491 Case 1840 Uniloader, 1998, Aux. Hyd., Drt. Bkt., 1212 Hrs. \$14,500
- #7517 Case 580K Loader Backhoe, 1987, 2WD, Can, Ex., 4661 Hrs. \$16,900
- #7516 Case 580K Loader Backhoe, 1989, 2WD, Cab, Ex., 5917 Hrs. \$19,900
- #7364 Case 95XT Uniloader, 1997, Cab w/Heat, Hyd. Coupler, 82" Bucket, 1550 Hrs. \$27,900
- #7362 JD 410 Loader Backhoe, 1978, 2WD, Canopy, Standard, 3100 Hrs. \$12,900
- #7870 Case 570LXT Tractor/Loader, 1996, 4WD, Canopy, 3 Point Hitch, Filled Tires, 500 Hrs. \$24,900
- #7872 Case 580L Loader Backhoe, 1998, 4WD, Cab, Ex., 500 Hrs. \$43,500

Vernon E. Stup Co.

5859 Urbana Pike, Frederick, MD 21701
301-663-3185