



A COMPLETE LIQUIDATION AT AUCTION



IMPERIAL, INC.
MANUFACTURERS OF SPECIALITY FURNITURE

ON SITE IN **HAGERSTOWN • MARYLAND**
WEDNESDAY • AUGUST 29, 2001 • 9:00 A.M.

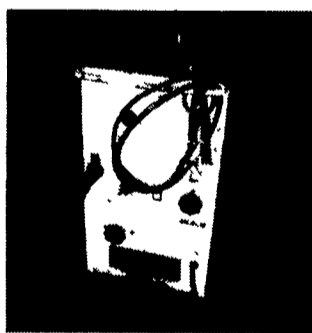
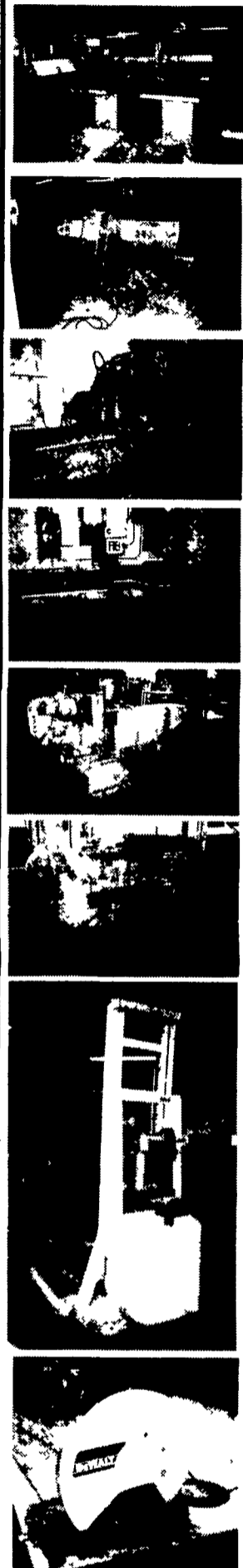
MAJOR INDUSTRIAL MACHINERY & TOOLS

HOLZMA HTK EL-85 12' Computerized Panel Saw, with rear loader; HOLZMA EL-100 10' Front Loading Panel Saw; MORBIDELLI UNIVERSAL 9 Point to Point Boring Machine, with PC based controller; HOMAG KL350 Edge Bander, with end trim, top and bottom trim, fine top and bottom trim, with scrapers and (2) buffers; BRANDT D2000 Edge Bander, with top and bottom trim and buffing; OLYMPIC Edge bander, with end trim, top and bottom trim and fine trim; EKSTROM CARLSON 444 4-Head Router, with vacuum table; SCM R8 Overhead Pin Router; PORTER 612 Overhead Pin router; HOLZ 1978-4 Power Feed; ROCKWELL 43-350 Heavy Duty Wood Shaper; ALBERTI F5-CN 5-Head Point to Point Boring Machine, with PC based controller; SCM FM25 Spindle Horizontal and Vertical Boring Machine; WH NICHOLS Horizontal Milling Machine; GRASS Hinge Machine; BINKS GCM 200 Powder Coating Machine; EVANS 100PDL 12' Manual Post Forming Machine; RITTER R500H Case Clamp; ROCKWELL Overarm Router/Shaper; POWERMATIC, ROCKWELL and CRAFTSMAN Drill Presses; FARR TENKAY Filtered Dust Collector; HAMMOND DK12555 6-Bag Dust Collector; OLIVER 416D 36" Band Saw; POWERMATIC 10" and 12" Table Saws; DARRA JAMES 10" Table Saws; POWERMATIC and ROCKWELL 14" Band Saws; POWERMATIC 8T Band Saw; DELTA 12" Radial Arm Saw; DeWALT Chop Saw; PEERLESS Power Hack Saw; Double-Headed Saw, with table; PORTER CABLE 15" Disk Sander; NEWTON 24" Horizontal Edge Sander; WYSONS Vertical Sanding Machine; 4x8 Glue Table; LeBLOND REGAL 24" Lathe; WHITNEY-JENSEN 129-Punch Press; E. W. BLISS CO. 58-Punch Press; FEDERAL No. 3 Punch Press; V&O PRESS CO. Punch Press; ROUSSELLE 4W Machine Press; WEST MFG. CO. Punch Press; GARVIN Punch Press; BERKOHMASTER Punch Machine; Pinch Press; T-Nut Insert Machine Press; LANDIS Threading Machine; PINES Tube Bender and Dies; Tube Cutting Machine; Hydraulic Sheers; 30" Metal Forming Roller; 8' Coil Steel Straightening Roller; PRODUCTION 101 Polisher; STANDARD Buffer; FOLEY 357 Sharpening Machine, for carbide

blades and other Foley equipment; Fiberglass Machine; PLASTIC-VAC 4x8 Vacuum Former; LUCIFER Heat Treating Oven; GIBSON BROTHERS Parts Tumbler; WINTER MPL Laminate Slitter; Click Die Machines; Paint Spraying Equipment; Metal and Plastic Banding Machines; Commercial Sewing Machines; PIQUA 40 Baler; WORTHINGTON 30 Hp. and 25 Hp. Air Compressors; (4) KELLOGG 5 Hp. Air Compressors; (2) ATLAS COPCO FD118 Air Dryers; LINDE 225 MIG Welder; JET JWG-34 Band Saw Blade Welder; DAYTON 42425 Spot Welder and Other Welders; 150,000 and 350,000 BTMS Space Heaters; Various Industrial Fan Units; Parts Washer; 5,000 PSI Power Washer; 5 Hp. Hydraulic Cabinet Unit; Industrial Shop Tables and Work Stations; Large Inventory of Heavy Duty Pallet Shelving; Shop and Material Handling Carts; Pallet Jacks; Platform Scales; Conveyors; Sealed Air Foam Packing Machine; Shipping Supplies; A Large Inventory of Power Tools Including: portable sanders, drills, routers, nailers, saws, grinders; Bar and C-Clamps; Power Cords; Air Hose; Load Binders; Chain Hoists; Electric Motors; A Very Large Inventory of Hardware Including AMEROCK and Other Manufacturers; FORMICA and WILSON ARTS Laminate Materials; Large Inventory of Remaining Lumber of All Kinds; Inventory of Mirror and Glass Stock; Aluminum Molding; Large Selection of 3/4" and 1" Tubing in 20' Lengths; Skids of 4" PVC Pipe; Remaining Inventory of Vinyl Rolls; Remaining Inventory of Styling and Shampoo Stations; Inventory of Chair Seats and Backs; A Complete Modular Pharmacy Station, new; Office Equipment and Supplies Including: Monroe RL 922CE copier, storage cabinets, shelving, desks, drafting tables, Repro-Technology blueprint machine and many other related items not listed.

FORKLIFTS, TRUCK & TRAILERS

KOMATSU FG25, 5,000-Lb. Propane Pneumatic Tire Forklift, s/n 104272; YALE 2500 Warehouse Forklift, with side shift; CROWN Electric Forklift; Electric Loading Lift; 10,000-Lb. Scissorlift; Forklift Extensions; 1989 INTERNATIONAL S1700 Diesel 20' Box Truck, with liftgate; (2) 40' Storage Trailers; 20' Pup Trailer, for storage and other related equipment not listed.



ABSOLUTELY NO BUYER'S PREMIUM

DIRECTIONS • ACCOMMODATIONS • TERMS

EXIT 29



DIRECTIONS Exit 29 off Interstate 70 at Hagerstown onto Maryland Route 65 North into the city, then right onto East Wilson Boulevard to the Action 9 (watch for auction signage).
AUCTION SITE PHONE (301) 733-3080 INSPECTION Tuesday, August 28 - 9:00 A.M. to 5:00 P.M.
AREA ACCOMMODATIONS Sleep Inn....(301) 766-9449, Plaza Hotel....(301) 797-2500, Ramada Inn....(888) 528-6738
AIRPORT Hagerstown Regional Airport is located nearby. (1-888-428-4322)

**** Call For Free Color Brochure At (301) 739-0538 Or Visit www.ipkoke.com/cochran TERMS INCLUDE CASH OR APPROVED CHECK ON DAY OF AUCTION WITH POSITIVE IDENTIFICATION REQUIRED FOR REGISTRATION. NOT RESPONSIBLE FOR ACCIDENTS. NO BUYERS PREMIUM**

JAMES G. COCHRAN - CEO/Auctioneer • THOMAS E. BIKLE - Director of Marketing

J.G. Cochran

AUCTIONEERS & ASSOCIATES LTD.
PROFESSIONAL AUCTIONEERS & APPRAISERS SINCE 1972
7704 Mapleville Rd., P.O. Box 222, Boonsboro, MD 21713-0222
(301) 739-0538 • TOLL FREE (MD) 1-800-310-2844 • FAX (301) 432-2844
PA Lic. # (AS000832-L) www.ipkoke.com/cochran



NATIONALLY RECOGNIZED - AWARD WINNING AUCTIONEERS SINCE 1972

-- CLIP THIS AD FOR IT WILL ONLY APPEAR ONCE --