



**1978 Ford Tri Axle 73 280**  
GVW, 290 Cummins, Rebuilt Engine, Reman Trans, Tarp, 900 Rubber, 13 Speed, 17 1/2 Ft Steel Bed, Air Gate  
**\$17,500**



**1992 Ford 8000 Tandem**  
240 HP, Ford Eng., 8 Speed, 56,000 GVW, 15 Ft. Heated Steel Body, 75K, Sharp, Clean  
**\$25,000**

**(717) 328-2007**



**(New) Nissan UD 1400**  
16 ft. Van Body, Auto Trans



**(New) Nissan UD 2300**  
24 ft. Van Body, Auto Trans.



**92 Nissan UD 1800**  
Jerr-Dan Wrecker, Sticks in Line 6 Diesel  
**\$12,900**

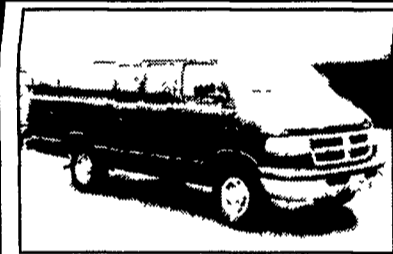


**2001 Nissan UD 1400**  
w/14 ft Stake Dump, Auto Trans., A/C, AM/FM



**1998 International 4700**  
DT-466-190 HP, 5 Spd. Trans., 19' Jerr-Dan Rollback w/Wheel Lift, 70,000 Mi., **\$32,900**

**INTERNATIONAL TRUCKS**  
**CENTRAL GARAGE, Inc.**  
South 2nd St. (Rt. 419) Womelsdorf (Berks Co.) Pa  
**610-589-4581 or 800-860-4581**



**00 Dodge 3500 12 Pass**  
Maxi Van 360 Auto, PS, PB, PW, PDL, Dual Air, Tilt, AM/FM/Cass, Privacy Glass, Black, 24,000 Mi  
**\$18,900**



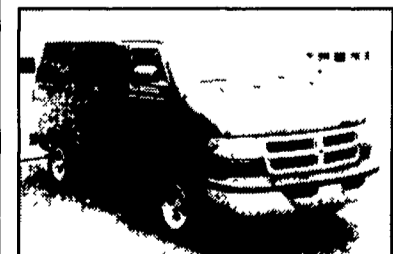
**1999 Dodge 2500 12 Pass**  
318 Auto, PS, PB, PW, PDL, Cruise, Tilt, Dual Air, AM/FM/Cass, Privacy Glass, Full Running Boards, 23,000 Mi, Dark Green  
**\$16,500**



**98 Dodge 2500 8 Pass.**  
360 Auto, PS, PB, Cruise, Tilt, Air, AM/FM Cass, Towing Pkg, Privacy Glass, 48,000 Miles, New Michelin Radials, Black  
**\$11,995**



**98 Dodge 2500 12 Pass.**  
318 Auto, PS, PB, Dual Air, AM/FM Cass, Vinyl Seats, 50,000 Miles, New Michelin Radials, Ex. Cond  
**\$11,995**



**1998 Dodge 1500 8 Pass**  
Short Wheel Base, 3.9 V6, Auto, PS, PB, PW, PDL, Cruise, Tilt, Air, AM/FM/Cass, New Michelins, 35,000 1 Owner Miles, Ex Cond  
**\$12,900**



**1995 Dodge 2500 SLT**  
Halfback Conversion Van, 318, Auto, PS, PB, PW, PDL, Cruise, Tilt, Air, AM/FM Cass, 78,000 Miles, Exc. Cond  
**\$7,950**

**A&J AUTO SALES**  
798 E. Main St., Rt. 322 East, Ephrata, PA 17522  
• 717-733-2873

**"Load, Haul and Dump"**  
  
**1988 Ford F-700 Dump Truck with Crane and Clam Shell Bucket**  
Diesel, Automatic Trans, Stabilizers, 32,000 GVW, 150K Miles, Good Tires, Runs Good...**\$5,499**  
**Ask for Ray 856-424-6300**

**1987 R Model Mack Has '93, 350 4 Valve, AC Eng. Brake, Low Miles On Rebuild, '93 Eaton 13 Sp. Trans., Air Ride, 20 Ft. Frame Behind Cab, 10 Alum. Wheels, 24.5 Low Pros, \$11,500**  
**For Sale Or Rent: '92 Utility Reefer, 94' Carrier Unit, 48-102, Air Ride Spread, Low Pros, 24.5 on 8 Alum. Wheels, Stainless Front & Rear, \$18,000**  
**Call For Info 717-354-6495**

 <b>99 DODGE B3500 EXT. VAN, 15 Pass, 5.9L FI Magnum V8, AT/OD, Dual AC &amp; Heat PW, PDL, Tilt, Cruise, AM-FM Cass, Privacy Glass, Dk Green, Only 49,000 Miles \$14,900</b>	 <b>94 DODGE RAM 1500 SLT, 4X4, 5.2L, Magnum V8, AT/OD, AC, PW, PDL, Tilt, Cruise, AM/FM Cass, Airbag, Chrome Wheels, Green/Silver, 100,000 Miles \$9,800</b>	 <b>99 GMC G2500 SAVANA CARGO VAN, 5.0L FI Vortec V8, AT/OD, AC, PS, PB, AM-FM, Cargo Divider, Ladder Rack, White, Only 17,000 Miles, Factory Warranty \$15,995</b>
 <b>96 FORD F150 XLT, 4X4, 5.0L FI V8, AT/OD, AC, PW, PDL, Tilt, Cruise, Airbag, Tool Box, Bed Liner, Dual Tanks, Chrome Wheels, Maroon, 85,000 Miles, Local Truck, Extra Clean \$10,900</b>	 <b>96 CHEVROLET K1500 SILVERADO EXT. CAB, 4X4, Z71, 5.7L, FI Vortec V8, AT/OD, AC, PW, PDL, Tilt, Cruise, AM/FM Cass, Keyless Entry, Alloy Wheels, Towing Pkg, LT, Blue/White, Wow! What A Truck! \$12,900</b>	 <b>91 FORD SUPER DUTY UTILITY BUCKET TRK, 7.3L Diesel, 5 Spd, PS, PB, 14,500 GVWR, Dual Tanks, Versalift High Reach Bucket, Gray, Ready To Work For You!! \$9,800</b>
 <b>95 CHEV. TAHOE LT, 4 Dr, 4x4, 5.7L FI V8, AT/OD, AC, Leather, PW, PDL, Tilt, Cruise AM/FM Cass, Privacy Glass, Hitch, Green/Gold, 109,000 Miles \$12,495</b>	 <b>97 DODGE DAKOTA SPORT EXT CAB, 2WD, 3.9L Magnum V6, 5 Spd, AC, Dual Airbags, Alloy Wheels, AM-FM Cass, Dk Green, 72,000 Miles \$8,995</b>	 <b>94 CHEV. K1500 SILVERADO EXT. CAB, 4x4, Z71, 5.7L FI V8, AT/OD, AC, PW, PDL, Power Seat, Tilt, Cruise, AM/FM Cass, Alloy Wheels, Towing Pkg, Dk Blue/Silver, 124,000 Miles \$10,900</b>
 <b>16' BLUE FINN ALUM. FISHING BOAT, 60 HP Evinrude, Swivel Seats, Trolling Motor, Exterior Just Refinished, Interior Needs A Little Work \$2,800</b>	 <b>91 FORD E350 CHASSIS, w/Arm Lift High Reach Bucket, Being Sold For Parts Only, Bucket Works Good, Van Has Front End Damage &amp; Is Missing Motor &amp; Trans \$1,895</b>	 <b>97 CHEV. VENTURE LS EXT., Twin Doors, 3.4L FI V6, AT/OD, AC, PW, PDL, Tilt, Cruise, AM/FM CD, Modular Seating, Privacy Glass, Alloy Wheels, Red, 70,000 Miles, Serviced &amp; Insp \$10,995</b>

**FINANCING AVAILABLE**

CARS	VANS CONTD.
98 VW PASSAT GLS, LEATHER, 5 SPD \$11,500	93 FORD CLUB WAGON CHATEAU, MAROON/GOLD \$8,995
98 DODGE INTREPID, SLATE \$8,995	93 DODGE B150 MARK III CONVERSION VAN \$5,995
98 DODGE INTREPID, AUTUMNWOOD \$8,995	88 CHEV G10 CARGO VAN, W/14 HP GENERATOR \$1,995
98 PONTIAC GRAND PRIX SE BLACK \$8,995	<b>TRUCKS</b>
98 CHEVROLET MALIBU, 4 DR \$8,495	98 DODGE DAKOTA SPORT EXT CAB, 2WD, V6 \$9,650
98 DODGENEON, 4 DR, AT, AC, RED \$7,500	97 DODGE DAKOTA SPORT EXT CAB, 2WD, V6, 5 SPD \$8,995
98 CHRYSLER CIRRUS LXI, LEATHER \$7,495	97 FORD F150 XLT EXT CAB, 2WD, 5 SPD, LONG BED \$10,900
97 DODGE STRATUS ES BURGANDY \$6,995	97 ISUZU NPR BOX TRK, TURBO DIESEL, AT \$13,900
97 DODGE INTREPID \$7,995	97 DODGE RAM 1500, PU TK, V6, AT, AC, WHITE \$6,995
97 DODGE INTREPID \$5,995	96 CHEV K1500 SILVERADO EXT CAB, 4X4 \$12,900
96 VW JETTA TREK, 4 DR, 5 SPD \$7,800	96 FORD F150 XLT, 4X4, V8, AT/OD, AC, LOADED \$10,900
96 FORD CONTOUR GL, TEAL \$4,995	96 DODGE RAM 1500 SLT PU TK, V8, AT, AC \$7,995
95 HONDA ACCORD LX, 4 DR \$8,995	95 GMC K2500 SLE EXT CAB, 4X4, LOADED \$14,900
95 MITSUBISHI ECLIPSE GS, RED \$8,995	95 DODGE RAM 1500 SLT EXT CAB, 2WD, LOADED \$7,995
95 OLDS CIERA SL, 4 DR \$4,995	95 DODGE RAM 2500 SLT, 2WD, V10 \$10,800
95 SATURN SL2, 4 DR, AT, AC, CHAMPAGNE \$5,500	95 FORD F350 BOX TRK, POWER STROKE DIESEL \$12,995
95 SATURN SL2, 4 DR, AT, AC, WINEBERRY \$4,995	95 FORD F150 XLT EXT CAB, 4X4, 8 FT BED \$8,995
94 PONTIAC SUNBIRD, 2 DR, AT, AC, RED \$2,995	94 CHEV K1500 SILVERADO EXT CAB, 4X4, LOADED \$10,900
88 OLDS DELTA 88, 4 DR, BLACK \$650	94 DODGE RAM 3500 CAB & CHASSIS, V10, 5 SPD \$10,900
<b>SPORT UTILITIES</b>	94 DODGE RAM 1500 SLT, 4X4, V8, LOADED \$9,800
96 CHEV SUBURBAN LS, 4X4, LOADED \$13,995	94 DODGE DAKOTA SPORT EXT CAB, 4X4, V8 \$7,995
95 CHEV TAHOE LT, 4 DR, 4X4, LOADED \$12,495	94 FORD F150 XLT, 4X4, V8, AT/OD, AC, LOADED \$7,800
95 CHEV BLAZER LT, 4 DR, LOADED \$8,500	94 CHEV S10 LS PU TK, 4X4, V6, AT, AC \$6,995
94 JEEP CHEROKEE COUNTRY, 4X4, LOADED \$5,995	94 CHEV C1500, 2WD, V8, AT, AC, WHITE \$4,800
93 JEEP GRAND CHEROKEE LARADO, 4 DR, 4X4 \$6,500	92 ISUZU NPR 14 FT BOX TRK, TURBO DIESEL \$10,900
91 JEEP CHEROKEE LARADO, 4X4, AT, AC \$3,995	91 FORD F250 CUSTOM PU TK, AT, AC, 2WD \$2,995
<b>VANS</b>	91 FORD SUPER DUTY UTILITY BUCKET TRK, DIESEL \$9,800
00 DODGE B2500 PREM DECOR, LOADED \$16,500	90 FORD SUPER DUTY UTILITY BUCKET TRK \$9,800
99 DODGE RAM B3500 EXT VAN, 15 PASS, LOADED \$14,900	90 FORD SUPER DUTY UTILITY TRK \$7,995
99 GMC G2500 SAVANA CARGO VAN, WHITE \$15,995	89 FORD F350 UTILITY BUCKET TRUCK \$8,900
99 CHEV VENTURE, TWIN DOOR, CHAMPAGNE \$11,500	89 DODGE RAM 3500, 4X4, CUMMINS DIESEL, DUMP, SNOWPLOW \$11,900
98 FORD E350 CLUB WAGON XLT, 15 PASS, BLACK \$14,995	88 FORD F350 UTILITY BUCKET TRK \$5,995
98 FORD WINDSTAR GL 7 PASS, LOADED \$9,800	88 DODGE RAM 350 STAKE BED \$3,900
98 CHEVROLET VENTURE \$8,500	<b>CAMPERS</b>
98 CHEV ASTRO CARGO VAN, WHITE \$8,995	95 SHASTA 32 TRAVEL TRAILER W/SLIDE OUT, SLEEPS 6 \$10,900
97 CHEV VENTURE LS EXT, TWIN DOORS \$10,895	<b>ODDS &amp; ENDS</b>
97 PONTIAC MONTANA EXT, TWIN DOORS \$9,800	99 16' BASS TRACKER PRO V ALUMINUM BOAT \$8,995
97 PLY GRD VOYAGER RALLY, TWIN DOORS \$7,995	16' BLUE FIN ALUMINUM BOAT, 60 FP, TRAILER \$2,800
96 FORD E350 CLUB WAGON, XLT, 15 PASS, LOADED \$12,800	HIGH REACH VAN BODY BUCKET ASSEMBLY \$1,895
96 DODGE GRD CARAVAN ES, TWIN DOOR, LOADED \$8,995	PICKUP TOOL BOX \$45
96 DODGE B2500 SLT VAN, 8 PASS, LOADED \$10,900	VEHICLE LP TANKS \$45
96 CHEV ASTRO LS AWD, 8 PASS, BURGANDY \$10,500	
95 FORD E150 CARGO VAN \$7,600	

**717-738-2242**  
**PINE TREE MOTORS**  
Rt. 322 & Clearview Rd., Clay, Lancaster Co., PA