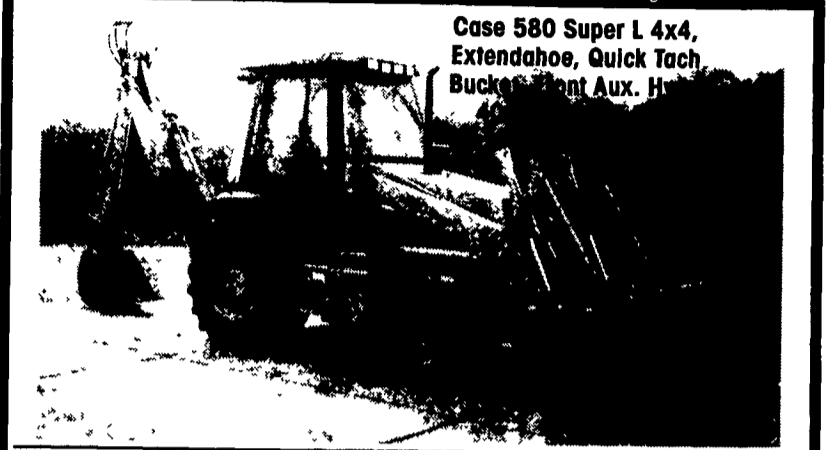


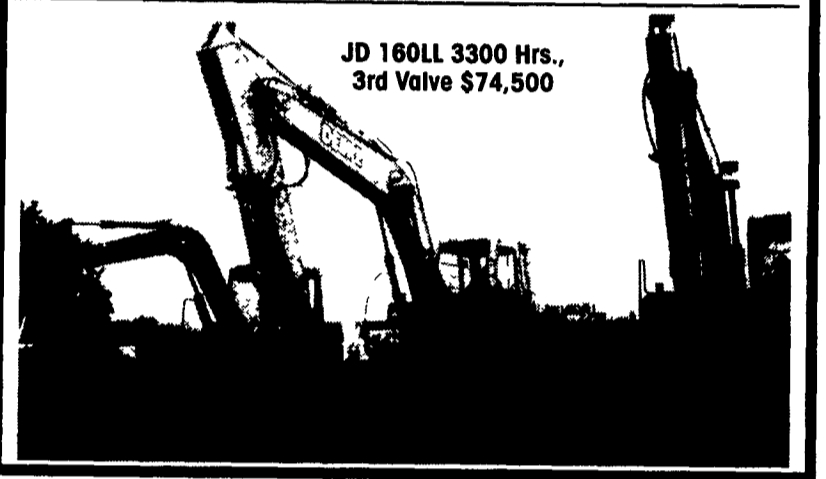
BUY, SELL, TRADE OR RENT THROUGH THE  
**CLASSIFIED ADS**  
 PHONE: 717-626-1164 or 717-394-3047  
 FAX 717-733-0058  
 Mon., Tues., Wed., Fri. 8 AM to 5 PM; Thurs 7 AM to 5 PM

**1A CONSTRUCTION EQUIPMENT**

**WENGER'S OF MYERSTOWN**  
 CONSTRUCTION EQUIPMENT & PARTS  
 800-552-5080 • Nights 717-272-9583  
 Rt 501 South Myerstown, PA 17067  
 HOURS Mon-Fri • 7:30-5:00 Saturday • 7:30-Noon  
 www.wengers.com kbaum@wengers.com



**Case 580 Super L 4x4, Extendahoe, Quick Tach Bucket, Rent Aux. H...**



**JD 160LL 3300 Hrs., 3rd Valve \$74,500**

- #7929 Case 1840 Uniloader, 1999, Aux hyd, drt bkt, 300 hrs, very clean ..... \$15,500
- #7926 Case Loader Backhoe, 1987, 2wd, Cab, Ext, tires good.. ..... \$15,900
- #7922 Case 9020 Excavator, 1993, 36" bkt, 6400 hrs, good cond. .... \$35,900
- #7923 New Holland LX885 Skidloader, 1997, cab, good tires, tracks, 2500 hrs ..... \$16,900
- #7895 Case 450 C Dozer, 1989, new undercarriage, 5800 hrs ..... \$19,000
- #7873 Case 85XT uniloader, 1999, Cab w/heat, 750 hrs. .... \$22,900
- #7870 Case 570LXT Tractor Loader, 1996, 4wd, can, 3 pt hitch, filled tires ..... \$24,900
- #7894 Case 680K Loader Backhoe, 1985, 2WD, Cab, Ext. Hoe. .... \$14,900
- #7786 Case 580L Loader Backhoe, 1998, 4WD, Cab, Ex, 1274 Hrs ... \$43,900
- #7668 Gradall G660 Excavator, 22,000 Miles, 422 Hrs., 36" & 60" Buckets ..... \$17,900
- #7699 Case 580K Loader Backhoe, 1987, 2WD, Can, Ext... ..... \$17,500
- #7822 Case 580C Loader Backhoe, 1977, 2WD, Can, Std, Very Good Cond., 6300 Hrs. \$10,900
- #7726 Case 780D Loader Backhoe, 1990, 2WD, Can, Ex, 4-N-1 Bkt ..... \$18,900
- #7723 Case 1845C Uniloader, 1986, Aux Hyd, Drt Bkt, New Tires, 2740 Hrs.. \$13,900
- #7729 Case 580SL Loader Backhoe, 1995, 4WD, Cab, A/C, Stereo, Deluxe Int, Ex 3320 Hrs ..... \$36,900
- #7519 Case 580SL Loader Backhoe, 1997, 4WD, Cab, Ex, 2332 Hrs ..... \$43,900
- #7491 Case 1840 Uniloader, 1998, Aux Hyd., Drt. Bkt., 1212 Hrs ..... \$14,500
- #7517 Case 580K Loader Backhoe, 1987, 2WD, Can, Ex., 4661 Hrs ..... \$16,900
- #7516 Case 580K Loader Backhoe, 1989, 2WD, Cab, Ex., 5917 Hrs. ... \$19,900
- #7364 Case 95XT Uniloader, 1997, Cab w/Heat, Hyd. Coupler, 82" Bucket, 1550 Hrs ..... \$27,900
- #7362 JD 410 Loader Backhoe, 1978, 2WD, Canopy, Standard, 3100 Hrs ..... \$12,900
- #7870 Case 570LXT Tractor/Loader, 1996, 4WD, Canopy, 3 Point Hitch, Filled Tires, 500 Hrs. .... \$24,900
- #7872 Case 580L Loader Backhoe, 1998, 4WD, Cab, Ex., 500 Hrs ..... \$43,500

**Caterpillar 955K w/Ripper  
 Mechanic's Special  
 \$6,500**

**Heavy Equipment Loader Parts, Inc.**  
 10070 Allentown Blvd., Grantville, PA 17028  
 (717) 469-0039

|  |  |
|--|--|
| <b>SOLD</b><br>Huber Grader F-1700 Series, Diesel Power Shift Trans, Full Cab Heaters Lights, Work Ready \$7,500               | Michigan 55-B Wheel Loader, 2 1/2 Yard Detroit Diesel, Full Cab, Good Condition \$13,500   |
| Fiat-Allis FL-7 Crawler/Loader, SN# L7AIT251426, Full ROPS Cab 4-in 1 Bucket 95% UC, Needs Nothing Original 970 Hours \$16,500 | Mack Fuel Truck, 29 000# GVW, Dual Compartments, Dual Pumps and Reel Lines, Excellent Working Condition \$8,500                                    |
| <b>SOLD</b><br>Dresser Dozer, 6 Way Blade, 5' U/C, Recent Engine Work, Well Kept, New Cutting Edges, Good Condition \$7,500    | International Sewer Jet, Diesel 5-Spd Trans P/S 1500 PSI Hale Pump, 500 On Reel All Attachments Included Low Miles and Hours Needs Nothing \$8,000 |

**WOODSIDE ENTITIES, INC.**  
 Rt. 940, Dilton, PA  
 (570) 636-1299

**Vernon E. Stup Co.**  
 5859 Urbana Pike, Frederick, MD 21701  
 301-663-3185

|   |  |
|---|--|
| Bartell B424 Edger w/Honda 4.0 GX122 Engine, Gas \$950  | <b>SOLD</b><br>ETN Forklift, 6 Cyl Model GL0120SBS096 12,000 Lb. Max. Cap. Lbs, In Good Condition, New Tires, Side Shift, Lifting Height 11', Forks Length 57" \$6,500 |
| Universal Concrete Form System App. 6000 Sq. Ft. In Good Condition, 2'x3', 2'x4', 2'x6', Misc. & Acces. \$7,000                       | (2) E Plus Motor Made by Megnetek, 15 HP, 60 HZ RPM 3500<br>(2) Balder Motor 3 Phase Electric, 15 HP, 3450 RPM<br>Aurora Cement Pump 6x6x9 JKPM \$250 Ea. <b>SOLD</b>  |
| (2) Razorback Rider Trowel Machines, Allen Engineering, High Performance Series, Kohler Command 25 HP Twin Power, 8' Wide \$5,000 Ea. | (3) Water Tanks 1,000 Gal Tank \$100 Ea.   |
| Davey Air Compressor (Gas), Ford eng., 6 Cyl \$1,200  | 1981 GMC Box Van (Gas) Gross Wt. 10,000, Insp. Good Till 8/02, Good Tires, Miles 167,900, Eng 350 \$2,000  |
| 1988 Ford F450 446CI 7.3L Super Duty Diesel Insp Good Till 3/02, 5 Speed \$3,900  | 1990 Ford F350 V8, 351, Auto Trans, Miles 150,000, Insp. Good Till 5/02, 4x4 \$2,000 <b>SOLD</b>   |

**717/432-8403**

**JERRE MARTIN REPAIR**  
 391 N. Farmersville Rd., Ephrata, PA 17522  
 (Just minutes off RT 222)  
 (717) 859-3283

**Financing Available** **Rentals Repairs**

|   |                                   |   |
|---|-----------------------------------|---|
| Late model JD wheel loaders '98,544H \$75,000, 89,624E \$35,000 '98,344H \$45,000 | Terex Wheel Loader \$7,500        | '94 JD 455G \$27,000  |
| '89 Dresser TD12 \$16,500   | '96 Cat 963B 10,000 Hrs. \$80,000 | Lull 844 42 Ft. Manitou 6,000 lb. 34 ft, Stytrack 7,000 lbs, 38 ft. |

**Sales Service** **Road Service Available Now**  
 Custom Repairs On All Makes Construction Equipment

**WE ARE BUYERS FOR LATE MODEL CONSTRUCTION EQUIPMENT NEEDING REPAIRS**

|  |   |
|--|---|
| Case 850B, good condition..... \$13,000                      | '74 JD 860A motor scraper..... \$16,000                                 |
| '93 Cat D5C w/6-way blade..... \$32,000                      | Ingersoll Rand, SD100DD Roler..... \$28,000                             |
| '90 Cat D6H, straight blade w/tilt, diff steer..... \$62,000 | Available: Rebuilt exchange motor for Cat 953..... \$5,000/Exchange     |
| Cat 613 Scraper..... \$13,500                                | Kubota KX101 Excavator..... \$14,000                                    |
| '95 Cat 939, good cond..... \$38,000                         | '91 Dresser TD7G w/6 way blade..... \$20,000                            |
| '81 Cat 943..... \$27,000                                    | Dresser 175C Crawler Loader, Like new U/C..... \$11,500                 |
| Cat 955K crawler loader, 90% S.A.L.T. U/C..... \$16,500      | '87 7038 Sky Track high lift..... \$25,000                              |
| '96 Cat 963B, 10,000 Hrs..... \$80,000                       | '79 Lull 844, extend-a-boom w/gas engine..... \$16,000                  |
| '86 Cat 963 crawler loader OROPS..... \$38,000               | '97 Manitou 1130L telescopic boom lift, 6,000 lb 34' lift..... \$27,000 |
| '89 JD 455G crawler loader, cleaned & painted..... \$24,000  | '96 Dresser TD8H, 6-way blade..... \$30,000                             |
| '98 JD 544H 1610 hrs., J.R.B. coupler..... \$75,000          |   |
| JD 555 crawler loader, new paint, new tracks..... \$15,000   |   |
| '89 JD 624E..... \$35,000                                    |   |