

35

TRUCKS AND TRAILERS

1986 18' Int. diesel, 5 sp., dual rear, complete overhaul in 2000, 10,000 miles on new eng., insp. 3/01, no CDL req., \$5,500. 717-332-5337.

1992 Chevy Kodiak 427 hewey alum. dump body 33000 gvw., exc. cond. \$14,000. 717-336-3106.

'98 UD-1400, 6cyl dsl, auto, 12 ft Morgan w/V250 Thermo King unit, 60,000 mi, ex cond, \$18,900. 717-264-7413

Used parts: power stroke dsl out of 1995 Ford truck, can hear run; front & rear axles, 4.10 ratio; transfer case; other misc. parts off 1995 F350. 570/539-8721

Demolition trailer, 30 ft, 50 yard box, barn gate, needs paint, \$3500. 215-416-3157

Steel dump trailer, 26 ft, barn gate, nice shape, \$3750. 215-416-3157

Demolition trailer, 32 ft, 60 yard, barn gates, \$4000. 215-416-3157

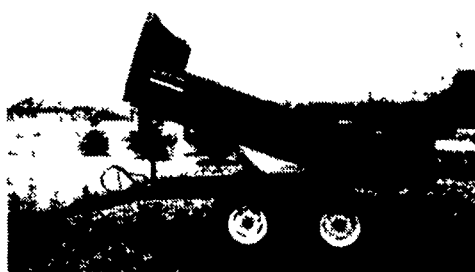
Demolition trailer, 30 ft single point suspension, needs floor, new steel goes with it, \$2500. 215-416-3157

'87 Ford LN8000, Cab 3208-T, 10 spd trans, 22' van body, 6 like new 11R22.5 tires, \$5000 obo. 717-677-9473

Parker 22' alum dump trailer, fair cond, \$3200 neg. 717-292-9274

FARM DUMP TRAILERS

(Direct from the Manufacturer)

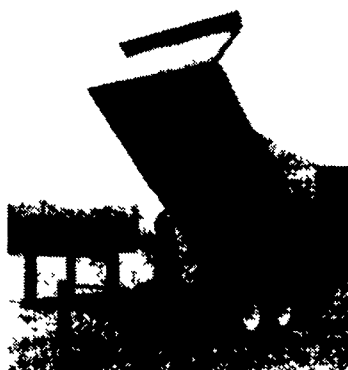


6-Ton Dump Trailer

- 10 ft. x 7 ft.
- Floating Tandem Axle
- 3 ft. Front, 3 ft. Tailgate & Grain Chute
- 16 in. Extendable Sides
- 10 ga. Floor & Sides
- 11Lx15 Flotation Tires
- 2-Way 4 in. x 24 in. Hydraulic Cylinder includes hoses

7-Ton Road Dump Trailer

- Fifth wheel or bumper type
- 16 ft. x 8 ft. deck 3 ft. front rack and pockets side & back
- D.C hydraulic pump & battery mounted in locking tool box.
- 12 ton drop leg jack
- 10 ga. floor
- 6x3x3/16 tube main frame
- Sealed beam lighting
- 7000 lbs. per axle rating
- Electric brakes on both axle
- 16" tires on white spoked rims
- \$6400 U.S. delivered in Northeast U.S.A.



BERKELMAN'S WELDING

RR 7, AYLMEER, ONTARIO, CANADA N5H 2R6
(519) 765-4230

NORTH EAST ENTERPRISES

WORLD'S LARGEST STOCKING LANDOLL

FONTAINE SPECIALIZED And

TRAIL-EZE DEALER!

SALES - SERVICE - PARTS - RENTALS



USED TRAILER INVENTORY

1986 Landoll Model 317 Traveling Axle Trailer 30 Ton Capacity, 48'x96", 20,000 LB Winch, Air Ride Forklift Pkg, Steel/Wood Deck, Remote Control, Front Extension, Dock Levelers Maroon - 30,000

1984 Landoll 317 Traveling Axle Trailer, 30 Ton Cap., 48'x96", 20,000 LB Winch, Air Ride, Steel Deck, Black \$27,000

20 ton Lowboy, gooseneck trailer w/beavertail, walking beam suspension, recent PA Insp Only \$4,500

1989 Landoll 300 Sliding Axle Trailer 47'x102", 12,000 lb Winch, Spring, 20 HP Power Unit, This Trailer has been modified to carry Containers 8 ton Capacity, Good Condition Only \$16,500

CALL TOLL FREE 1-877-526-3655

Web Address: www.etrailersales.com

Email: trailerinfo@neent.com

Ask for Wayne or Julie

'90 Freightliner, Cab over, 350, S60 Detroit, 9 spd, 8 new drive tries, very dependable, \$5000. '87 Chevy crew cab, very solid truck, cold AC, \$3500. '73 Chevy C50, 4 spd, 350 flatbed, \$1500. Or trade for dry van trailers. 908-213-8943

86 freight 350 Cat, 9 speed, strong truck, 530,000mi. Like new rubber \$4000 OBO. 717-337-3127 Evenings

1955 L190 int. pickup, fair cond. This antique truck is avail. for highest offer by 9/1. 717/232-8754

'69 Mack tandem cab & chassis, 38k, camelback rears, 250hp, long wheel base (180" c.t.) cab ex cond. 570-784-0111 days, 570-784-6359 eves

1986 F150 farm \$800; 1987 S10 4WD, ext cab, 73,000 mi. \$3800. 717-354-9152

Ephrata Township is selling a 1989 Ford F-250, 4x4 w/utility & plow. Contact the Township 717-733-1044 for details

Mack engines, 300 +, 237, Detroit, 6V92 Silver, 318, 671. Mack cabs, R model & DM. Many other parts. Haps Truck Parts 610-944-9871

26 ft Jerr Dan roll bed body for tandem axle truck, has tow bar for 2nd truck, strong bed, can haul 2 tandem trucks with it, \$7500. 610-944-9871.

Used swinging Pullrite towing hitch, 5 ton cap, fits med & HD Ford trucks, new \$1900, sell for \$500. 717-532-3957

1995 Pete 378 63" flat top, 550 Cat, 10 spd alum 24.5, OK blue, \$29,500. 717-762-4858.

GMC Brigadier, tandem axle, long double frame, make good farm truck, \$2000. 717-786-3433

1996 17.5' Gallon steel dump body, new paint & liner installed 11/00, no dents, reinforced bottom, exc. cond., asking \$8250. Lanc. Co. 800/551-5858

1988 Ford F700, cab & chassis, 30,000 GVW, 6.6 liter dsl, PTO, very good condition. 717-432-3514

1971 Ford F-350 Crew Cab, dual wheels, \$1,500/obo or will trade. 609-799-5411.

1993 Freightliner FLD 120, cab & chaise, 160" CA, 18' frame, 3406 Cat, 400 hp., 9 spd., air susp., good tires, \$9,500. 1989 FLD 120 tractor, w/60" nonintegral sleeper, 3406 cat, 425 hp., 15 spd., alum. wheels, \$6,900. 717-597-5623.

8'x24' alum Eby gooseneck livestock trailer, 1988, vacuum brakes, good tires, \$7750. 302-398-8058

Aluminum Gooseneck Trailer 2000, 20', same as new. 540-434-4909

'82 Ford LN8000, w/4 yr old 18 ft Scott silage body, big hoist, 55' dump angle, 5 spd trans w/2 spd rear, 33,000 GVW, 3208 Cat eng, good cond, \$15,000. 717-334-2760

'82 LTS 9000 Ford tri-axle dump truck, 73,280 GVW, 284,000 mi, 400 Cummins eng, 8LL trans, 18' dump, 90% rubber, air PTO & air tail gate, 1-owner truck, \$18,500. 717-865-4019

'68 Ford F750, dump, \$1700. '68 Chevy C30, dump, \$1100. '86 Ford F350, flatbed, \$2600. Or best offers. Sch Co. 570-739-4650

2000 Ford F350 XLT Lariat 4x4, dual wheels, 9800 mi, leather interior, dark green, gooseneck hitch, elect. brake control, \$33,900. 717-246-2271

'94 Freightliner, Cab over, 60 series Detroit, 10 spd. 717-244-8098

Wanted: Isuzu Trooper w/diesel engine. 302-398-8754

Combination cattle truck, grain dump, chip box, 1981 GMC, 10,000 GVW, Huey dump bed, \$6000 obo. 717-626-3019

Hudson 8' wide, 6 ton capacity, 16' flatbed, 3' Beaver tail, 5' ramps, tandem axle, \$4000 obo. 717-926-8682

16' Gooseneck Equipment Trailer

w/loading ramps. All new tires & spare. Good condition.

\$1,850

610/987-0055

EBY USED EQUIPMENT

LIVESTOCK BODIES

- 14'x96"x6'3" Eby
- 18'x96"x6'6" Eby
- 9'x94"x6'9" Eby
- 10'x92"x6'6" Eby Deck Rail & Winch
- 10'x96"x6'6" Eby Above Bodies

LIVESTOCK TRAILERS

- (1) 1998 Eby 28'x102"x6'6" Alum Gooseneck
- 1998 4-Star 30'x8'x6'6" Alum Gooseneck Hydraulic Brakes
- 1996 Delta 20'x7'x7' Gooseneck with 4' tack at front
- 1995 Eby 24'x7'x6'6" Hydraulic Brakes, Aluminum Gooseneck
- 1993 Barrett 26'x8'x6'6" Alum Gooseneck

M.H. EBY, INC.

1194 Main St. (Route 23) Blue Ball, PA 17506 (717) 354-4971 (800) 292-4752
4435 State Route 29 West Jefferson, OH 43162 (614) 879-6901 (800) 752-0507

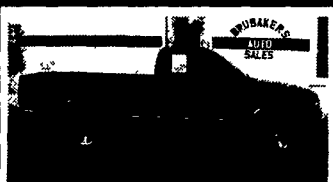
BRUBAKER AUTO SALES

PH. 717-866-5237

Hours: Mon-Fri. 8 a.m. - 5 p.m. Sat. 9 a.m. - 2 p.m.



99 CHEVY 1500 SUBURBAN LT 4x4, 8 Pass, White, 350, V8, AT, PW, PL, CC Dual-AC, AM/FM/Cass/CD, Pwr Seats, Leather, Keyless 59,730 Mi \$19,900



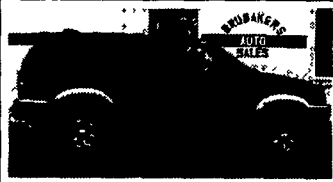
98 CHEVY S-10 LS 2WD, Brown, 4 Cyl., AT, AM-FM Cass, AC, CC, Tilt, 42,820 Mi \$9,900



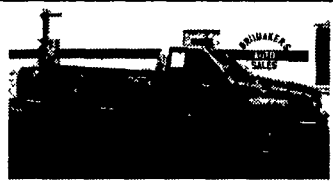
98 DODGE RAM 1500 4X4 Laramie SLT, Purple/Gry, 360 V8, AT, AM-FM Cas, AC, PW, PL, CC, Tilt, 45,070 Mi \$15,600



98 DODGE GRAND CARAVAN SPORT Green, 3.8 V6, AT, AM-FM Cas, PW, PL, CC, Tilt, Dual AC, Pwr. Seat, CD Changer, 53,125 Mi \$13,600



98 MITSUBISHI MONTERO LS 4 Dr, Sport, 4x4, Red/Tan V6, 5 Sp., AM-FM Cas, AC, PW, PL, CC, Tilt, 46,735 Mi \$14,900



97 GMC 2500 SIERRA SL 4x4 Tan, 350 V8, AT, AM-FM Cas, AC, CC, Tilt, 91,320 Mi \$11,800



97 FORD F-250 XLT 4X4 Ext-Cab, Maroon, 5.4 V8, AT, AM-FM Cas, AC, PW, PL, CC, Tilt, 73,360 Mi \$16,900



00 FORD EXPLORER 4X4 Eddie Bauer, Maroon/Tan SOHC V6, AT, AM-FM Cass, AC, PW, PL, CC, Sunroof, CD, Leather, Reverse-Sensing-System, PW Seats, 52,255 Mi. \$17,900

WHEN AGRICULTURE IS YOUR LIFE,



Eby's complete line includes models for every requirement

BODIES

- Gooseneck Trailers - Lengths 14--32', Widths 7', 7'6", 8' and 8'6"
- Bumper Hitch Trailers - Lengths 12' - 18'
- Grain Bodies - Lengths to 24', plus landscape and general purpose dumps to 12'
- Flatbed Bodies - Lengths to 32' in 5 widths
- Landscape Bodies - Lengths to 12'

GOOSENECKS

BUMPER HITCHES



Blue Ball, PA 800-292-4752

For quality equipment and customer service that works as hard as you do, nobody offers more than EBY.

THE EQUIPMENT CHOICE IS EBY.