

Carlisle Livestock

Carlisle, Pa.

Report Supplied by Auction
Tuesday, July 24, 2001

SLAUGHTER CATTLE: STEERS, ACTIVE! CHOICE 1050-1485 LBS. 75.00-80.00, 1500-1585 LBS. 75.00-77.50, SELECT AND LOW CHOICE 1000-1600 LBS. 70.00-74.85, HOLSTEINS CHOICE 1400-1700 LBS. 68.50-72.75; HEIFERS CHOICE 1000-1400 LBS. 75.00-79.00, SELECT AND LOW CHOICE 950-1250 LBS. 73.75-74.75; COWS, ACTIVE! BREAKERS 45.00-51.00, BONERS 44.00-49.00, LEAN 40.00-48.00, BIG MIDDLE/LIGHTS/LOW DRESSING COUPLE 34.75-44.25, SHELLEY 34.50 AND DOWN; BULLS YG#1 HEREFORD 1400-1835 LBS. 55.00-62.75.

FEEDER CATTLE: STEERS, DAIRY TYPES 400-900 LBS. 49.00-58.00; HEIFERS 400-900 LBS. 63.00-80.00; CALVES RETURNING TO THE FARM, HOLSTEIN BULLS #1 85-130 LBS. 100.00-140.00, HOLSTEIN HEIFERS #1 75-125 LBS. 170.00-450.00.

SWINE: HOGS US#1-3 240-280 LBS. 48.00-48.50; BOARS 220-600 LBS. 20.00-34.00; SOWS US#1-3 350-500 LBS. 38.00-39.50; FEEDER PIGS BY THE LB. 16-25 LBS. 117.50-150.00, 60-80 LBS. 68.00-80.00, ROASTERS 100-150 LBS. 70.00-75.00.

GOATS: BY THE HEAD, FANCY KIDS 61.00-73.00, FLESHY KIDS 45.00-60.00, SMALL/THIN KIDS 25.00-44.00.

LAMBS: GOOD AND CHOICE 50-60 LBS. 90.00-105.00, 65-115 LBS. 66.00-80.00.

SHEEP: ALL WEIGHTS 38.00-40.00. SALE EVERY TUESDAY 5 P.M. FOR RABBITS, POULTRY, EGGS; 6:30 P.M. FOR LIVESTOCK, STARTING WITH CALVES; SPECIAL FED CATTLE SALE TUES., AUG. 7; SPECIAL FEEDER CATTLE SALE TUES., AUG. 21; STATE GRADED FEEDER PIG SALES FRIDAY, JULY 27; PEN LOTS OF CATTLE SOLD IN ORDER RECEIVED; EARLYBIRD

PENS CLOSE TUES. 2 P.M.
SMALL ANIMAL SALE
TUES., JULY 24

RABBITS 1.25-6.25.
CHICKENS 3.00-4.50, BANTIES 2.25-2.85.
DUCKS 1.50-3.50.
COCKATIELS 33.00.
FERRETS 30.00-31.00.
QUAIL 1.25-2.75.
PIGEONS 2.70-4.25.
PHEASANTS 3.50.
PEACOCKS 30.00-36.00.
ALL ANIMALS SOLD BY THE HEAD.

Westminster Livestock

Hagerstown, Maryland

Report Supplied by Auction
July 24, 2001

SLAUGHTER COWS: 53 HEAD, STEADY. BREAKERS 44.50-49.25, BONERS 40.00-44.00, LEAN 35.00-40.00, THIN 35.00 DOWN.

BULLS: 7 HEAD. YG#1 58.00-63.00, YG#2 55.00-58.00.

FED STEERS: HIGH CHOICE TO PRIME 1200-1425 LBS. 75.00-77.75, 2 HEAD 1525 LBS. 74.25-76.75, LOW CHOICE 1100-1450 LBS. 72.00-75.00, 1 CHOICE HOLSTEIN AT 68.00.

FED HEIFERS: 1 CHOICE 1202 LBS. AT 74.75, LOW CHOICE 1000-1250 LBS. 67.00-70.50, SELECT 64.00-68.00.

CALVES: 137 HEAD, GOOD SLAUGHTER. 80-110 LBS. 50.00-70.00; HOLSTEIN BULLS RETURNING TO FARM 5.00-10.00 HIGHER. #1 90-120 LBS. 125.00-145.00, 80-88 LBS. 95.00-115.00; #2 90-120 LBS. 102.00-125.00, 80-88 LBS. 70.00-90.00; HOLSTEIN HEIFERS 20 HEAD. #1 90-115 LBS. 440.00-525.00, #2 250.00-400.00; 1 146 LBS. AT 225.00; BEEF X BULLS AND HEIFERS 75-95 LBS. 150.00-185.00.

BUTCHER HOGS: 21 HEAD, 1.00 LOWER. #1 AND 2 230-265 LBS. TO 47.75; #1 AND 3 44.00-46.00.

SOWS: FEW OFFERED. 500-600 LBS. 38.00-40.25.

BOARS: TO 23.00.

STOCK CATTLE: 97 HEAD. STEERS MED. AND LARGE FRAME 300-500 LBS. 83.00-98.00, 500-600 LBS. 76.00-86.00, 600-800 LBS. 70.00-75.00, 800-950 LBS. 63.00-75.00.

HEIFERS: MED. AND LARGE FRAME 300-500 LBS. 80.00-95.00, 500-700 LBS. 80.00-89.00, MEDIUM 600-800 LBS. 65.00-75.00.

BULLS: MED. AND LARGE FRAME 300-500 LBS. 80.00-98.00, 500-600 LBS. 70.00-80.00, 600-900 LBS. 61.00-69.50, 1 950 LBS. AT 62.00.

SHEEP: 29 HEAD. 30.00-46.00, FEW 50.00-68.00.

LAMBS: 86 HEAD, DEMAND WEAKER. HIGH CHOICE TO PRIME 100-120 LBS. 76.00-81.00, GOOD 70-110 LBS. 67.00-80.00, 50-70 LBS. 75.00-87.00; MEDIUM TO GOOD 50-95 LBS. 65.00-75.00.

GOATS: 89 HEAD, LARGE BILLIES AND WETHERS 79.00-122.00, MEDIUM BILLIES 40.00-65.00, LARGE NANNIES 60.00-97.00, MEDIUM 40.00-68.00.

PIGS AND SHOATS: 50 HEAD. BY THE HEAD 20-30 LBS. 19.00-28.00, BY THE LB. 40-60 LBS. TO 77.00, 75-85 LBS. 69.00-73.00; STOCK BOARS 248 LBS. AT 39.00.

Four States Livestock

Hagerstown, Maryland

Report Supplied by Auction
July 25, 2001

SLAUGHTER COWS. 69 HEAD, 1.00 HIGHER BREAKERS 46.00-50.00, FEW 51.00-53.25, BONERS 42.00-46.00, LEAN 38.00-42.50, THIN 38.00 DOWN.

BULLS: 9 HEAD, 2.00 HIGHER. YG#1 57.00-60.50, YG#2 52.00-58.00.

FED STEERS: 10 HEAD. CHOICE 3 1548 LBS. AT 72.50, LOW CHOICE 1100-1400 LBS. 71.00-74.25.

FED HEIFERS: 22 HEAD, BETTER QUALITY OFFERED. HIGH CHOICE TO PRIME 1050-1350 LBS. 75.50-77.25, CHOICE 2-4 73.00-76.50, LOW CHOICE 69.00-72.00.

CALVES: 170 HEAD, GOOD SLAUGHTER 55.00-70.00; HOLSTEIN BULLS RETURNING TO FARM, STEADY TO 5.00 LOWER. #1 90-115 LBS. 125.00-137.00; #2 105.00-125.00; #2 80-88 LBS. 75.00-95.00; HOLSTEIN HEIFERS 24 HEAD. #1 90-120 LBS. 450.00-550.00; #2 80-120 LBS. 340.00-450.00, 65-80 LBS. 140.00-230.00; BEEF X BULLS AND HEIFERS #1 140.00-200.00.

BUTCHER HOGS: #1 AND 3 200-265 LBS. 44.00-45.50.

SOWS: 300-400 LBS. TO 38.00.

BOARS: 525 LBS. TO 21.25.

STOCK CATTLE: 67 HEAD. STEERS 300-575 LBS. 83.00-94.00, 600-900 LBS. 64.00-76.00.

HEIFERS: 200-400 LBS. TO 101.00, 400-500 LBS. 89.99-99.00, 700-800 LBS. 65.00-71.00.

BULLS: 300-500 LBS. 74.00-90.00, HEREFORD X 400-700 LBS. 63.00-73.00.

DAIRY REPLACEMENTS: LARGE SPRINGERS 1285.00-1360.00.

LAMBS: 36 HEAD. HIGH CHOICE TO PRIME 90-110 LBS. 78.00-81.00, MEDIUM TO GOOD 70-95 LBS. 70.00-80.00.

GOATS: 20 HEAD. LARGE 64.00-77.00, MEDIUM 29.00-40.00, KIDS 10.00-27.00.

PIGS AND SHOATS: BY THE HEAD, 20-30 LBS. 15.00-19.00, 50-60 LBS. 39.00-50.00; 2 LARGE BRED SOWS 200.00 EACH; BY THE LB CULLS 120-150 LBS. TO 49.00.

NEXT WED., AUG. 1, WE WILL HAVE A 2 YEAR-OLD REG. HEREFORD BULL 1200 LBS., 20 BEEF COWS WITH CALF PAIRS. BLACKS, bwf, LIMOUSIN, SIMMENTAL, SELLING WITH LIMI SIRE CALVES.

Belknap Livestock

Belknap, Pa.

Report Supplied By USDA, PDA
July 25, 2001

CATTLE 95..(PDA).STEERS: couple Select 1-3 67.25 & 68.75, couple Standard 1-2 63.00 & 65.50.HOLSTEIN

STEERS: few Choice 2-3 1290-1375 lbs 65.50-68.00.

HEIFERS: one Choice 2-4 1308 lbs 70.00, few Standard 1-2 57.00-62.50.

COWS: Breakers 75-80% lean 42.00-46.00, few Boners 80-85% lean 40.50-44.50, Lean 85-90% lean 34.25-40.00 with lightweights down to 31.00. Shells down to 29.75.

BULLOCKS: few Select 1-3 1120-1240 lbs 59.00-64.00.

BULLS: one Yield Grade 1 1686 lbs 58.75, few Yield Grade 2 1120-1640 lbs 55.00-58.00.

FEEDER CATTLE: STEERS: Medium and Large 2 300-400 lbs 90.00-98.00, few Medium 2 422-836 lbs 69.50-77.00; HEIFERS: couple Medium 1 314 & 366 lbs 98.00 & 92.00; BULLS: few Medium 1-2 300-320 lbs 107.00-110.00.

CALVES 85..VEALERS: few Good and Choice 175-275 lbs 90.00-103.00, Standard and Good 70-106 lbs 33.00-67.50. FARM CALVES: No 1 Holstein bulls 90-130 lbs 115.00-140.00, No 2 75-115 lbs 67.50-110.00; few No 1 Holstein heifers 80-105 lbs 400.00-490.00, No 2 80-134 lbs 185.00-360.00.

Beef type bulls and heifers 70-100 lbs 160.00-205.00.

HOGS 46..BARROWS AND GILTS: 49-54% lean 240-250 lbs 46.00-46.75, few 45-50% lean 230-250 lbs 43.25-44.25, 40-45% lean 260-305 lbs 42.00-43.75.

SOWS few 1-3 460-612 lbs 36.00-39.25.

BOARS: few 480-708 lbs 19.00-21.00.

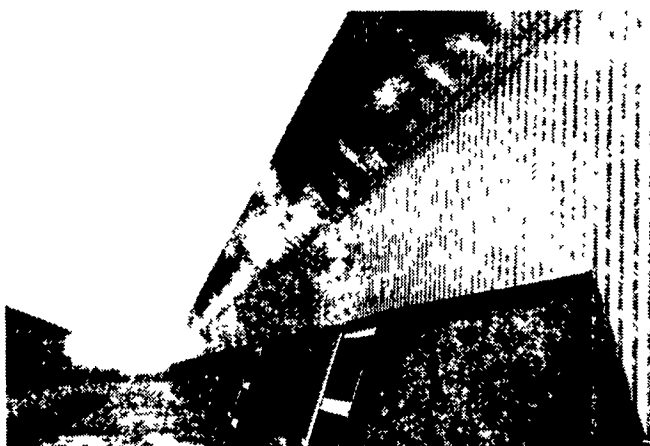
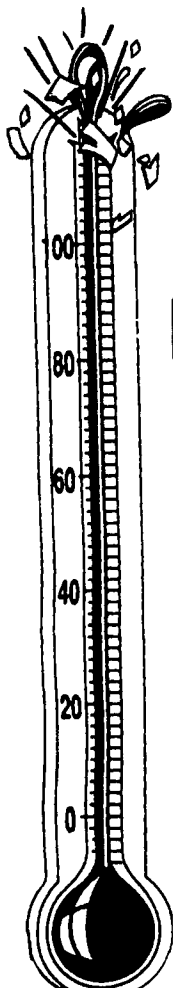
FEEDER PIGS 16..1-3 45 70 lbs 47.50-57.50 per head, few 160-186 lbs 46.50-61.00. — per cwt.

SHEEP 18..SLAUGHTER LAMBS: High Choice and Prime 100-125 lbs 74.00-77.50, Choice 75-90 lbs 83.00-85.00, one 66 lbs 93.00.

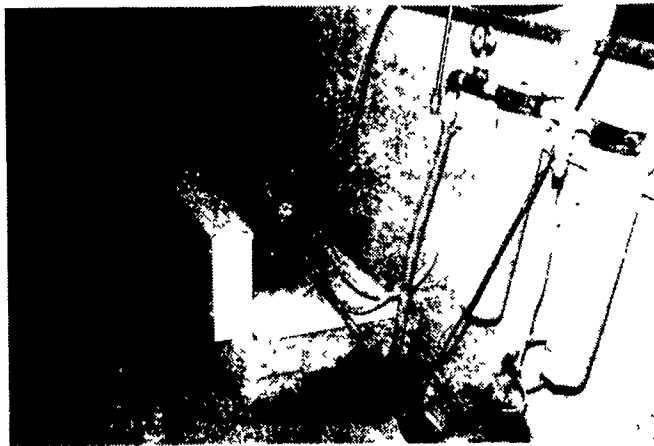
GOATS 34..(All sold by the head-).Couple Large Billies 71.00 & 80.00, few Medium 53.00-73.00, few Large Nannies 60.00-72.00, few Medium 35.00-53.00, Large Kids 34.00-50.00 with couple down to 10.00, couple Small 35.00 & 37.00.

**WHEN IT'S HOT
BEAT THE HEAT WITH . . .**

VAL WATERING SYSTEMS / POLAIR HIGH PRESSURE FOG/COOLING SYSTEM



All stainless steel pipes and nozzles are located to spray 1000-psi mist into inlet air stream for evaporative cooling (up to 10-degree lower temperature) lines are sloped for complete drainage during off cycles and winter months.



High pressure pump is controlled by temperature and humidity levels. Water is filtered and injected to prevent calcium build ups in lines and nozzles.

FOR MORE INFORMATION AND FREE ESTIMATES CALL:



255 PLANE TREE DRIVE, LANCASTER, PA 17603

1-800-432-0988 • (717) 393-5807
FAX (717) 291-1534

"YOUR PARTNER IN AGRI-BUSINESS"

Lancaster Farming
Check out our web site

www.lancasterfarming.com



Select Vermont Castings Gas Stoves
(While In Stock)



1060 Division Highway 322 East, Ephrata, PA 17522
1 Block East of Rt. 222
(717) 733-4973
800-642-0310
www.bowmansstove.com
Mon., Tues., Wed 10 to 6, Thurs. Fri 10 to 8, Sat. 10 to 4