

**Northeast Broiler Fryer Parts Part I**

ATLANTA, GA. July 25, 2001

Report Supplied By USDA

Trucklot buying activity was only fair at best during midweek trading as most dealers continued to limit purchases to most immediate needs. Offerings of bone-in breasts were well balanced and boneless-skinless breasts were clearing satisfactorily. Wings were at least adequate, and drums and thighs were available. Leg quarters were well cleared. Retail and distributive movement was no better than fair, however, good seasonal pickup was noted into fast food channels. The market tone remained steady on breast items, about steady on the balance.

ICE PACKED BROILER/FRYER PARTS, DELIVERED TO FIRST RECEIVERS IN POOL TRUCKLOT AND TRUCKLOT QUANTITIES, CENTS PER POUND. ITEM CURRENT NEGOTIATED TRADING BREAD - B/S 130 TENDERLOINS 135 BREAD - WITH RIBS 60-61 BREAD - LINE RUN 60 LEGS 42-43 LEG QUARTERS (BULK) 30-31 DRUMSTICKS 40-41 THIGHS 37-38 B/S THIGHS 88-89 WINGS (WHOLE) 87-88 BACKS AND NECKS (STRIPPED) 10-12 LIVERS (5 POUND TUBS) 30-35 GIZZARDS (HEARTS) 45-50

INCLUDES NEW YORK CITY METROPOLITAN AREA, NORTHERN NEW JERSEY, MASSACHUSETTS, CONNECTICUT, RHODE ISLAND, AND PENNSYLVANIA (NORTHEAST OF HARRISBURG).

**Northeast Broiler Fryer Parts Part II**

ATLANTA, GA. July 25, 2001

Report Supplied By USDA

ICE PACKED BROILER/FRYER PARTS, DELIVERED TO FIRST RECEIVERS IN POOL TRUCKLOT AND TRUCKLOT QUANTITIES, CENTS PER POUND CURRENT NEGOTIATED WTD VOLUME ITEM TRADING AVG /LBS BREAD - B/S 130 140.65 551,986 TENDERLOINS 135 136.10 97,040 BREAD - WITH RIBS 60-61 66.90 331,120 BREAD - LINE RUN 60 62.63 197,000 LEGS 42-43 41.77 390,040 LEG QUARTERS (BULK) 30-31 31.24 557,302 DRUMSTICKS 40-41 46.63 168,630 THIGHS 37-38 44.14 147,820 B/S THIGHS 88-89 91.31 66,960 WINGS (WHOLE) 87-88 94.89 381,440 BACKS AND NECKS (STRIPPED) 10-12 11.99 88,180 LIVERS (5 POUND TUBS) 30-35 39.72 121,920 GIZZARDS (HEARTS) 45-50 49.93 132,680

INCLUDES NEW YORK CITY METROPOLITAN AREA, NORTHERN NEW JERSEY, MASSACHUSETTS, CONNECTICUT, RHODE ISLAND, AND PENNSYLVANIA (NORTHEAST OF HARRISBURG).

**North Atlantic Eggs**

Atlanta, Georgia

Report Supplied by USDA July 25, 2001

In Philadelphia, prices were unchanged to 2 cents higher on the larger sizes and unchanged to 1 cent higher for mediums. In Boston, prices were unchanged to 2 cents higher for the larger

sizes and unchanged on mediums.

Prices paid to producers in New England were 2 cents higher on the heavier weight eggs, 1 cent higher on mediums, and unchanged on smalls. The market tone was fully steady to firm. Demand into all channels ranged moderate to good, best where featured. In the Philadelphia area, mediums eggs were on special for 59 cents per dozen with no restrictions. Supplies were adequate to close. Breaking stock offerings were sufficient for the moderate demand. Light type fowl were fully adequate to ample for slaughter needs.

PHILADELPHIA: PRICES TO RETAILERS, SALES TO VOLUME BUYERS, USDA GRADE A AND GRADE A, WHITE EGGS IN CARTONS, DELIVERED STORE DOOR, CENTS PER DOZEN. RANGE: EXTRA LARGE .58-.68, LARGE .56-.66, MEDIUM .39-.43

BOSTON: PRICES TO RETAILERS, SALES TO VOLUME BUYERS, USDA GRADE A AND GRADE A, BROWN EGGS IN CARTONS, DELIVERED STORE DOOR, CENTS PER DOZEN. RANGE: EXTRA LARGE .97-1.02, LARGE .84-.90, MEDIUM .59-.61

NEW ENGLAND: PRICES PAID TO PRODUCERS, CASES EXCHANGED, GRADE YIELD BASIS, BROWN EGGS LOOSE, AT FARM, CENTS PER DOZEN. RANGE: JUMBO 1.23-1.26, EXTRA LARGE .83-.86, LARGE .71-.74, MEDIUM .41-.44, SMALL .17-.20

**Eastern Region Frozen Eggs**

ATLANTA, GA.

July 20, 2001

Report Supplied By USDA

Values generally improved with mostly prices unchanged on salt yolk, unchanged to higher on whites and slightly higher on sugar yolks when compared to a week earlier. Supplies were

adequate for usually a light demand. Trade sentiment was fully steady on sugar yolks and generally steady on balance. Liquid and frozen eggs (ingredients included) processed under federal inspection in the Eastern region for the week ending July 14, 2001 were 16 % more than the previous week, but 15 % less than a year ago.

WHOLESALE SELLING PRICES (CENTS PER POUND IN 30 LB. CONTAINERS)

TRUCKLOTS LTL (MIN. 25 CONT.) RANGE MOSTLY RANGE WHOLE 41-44 49-56 BLENDS (f) TFEWR 64-80 WHITES 27-32 28-30 34-52 SUGARED YOLKS (MIN 43% SOLIDS) 75-80 77-80 80-85 SALTED YOLKS (MIN 43% SOLIDS) 71-78 71-74 77-79

(f) - WHOLE PLUS YOLK PLUS SWEETENER, GENERALLY 28-32% EGG SOLIDS.

**Belleville Poultry**

Belleville, Pa.

Report Supplied by Auction Wednesday, July 25, 2001

GEES: 3.00 EA. TURKEYS: 5.00 EA. GUINEAS: 7.00, CHICKS .50-1.50 EA.

ROOSTERS: 4.00-6.25 EA. BANTAMS: 2.00-3.50 EA. HEAVY HENS: 3.00-3.50 EA. SILKIES: 2.25-2.75 EA. MUSCOVY HENS: 4.75-5.50 EA. MUSCOVY DRAKES: 8.50-12.00 EA.

MIXED DUCKS: 4.00 EA. BARN PIGEONS: 1.75-2.75 EA. WHITE BIRDS: 2.60 EA. FANCY BIRDS: 4.00 EA. PEACOCKS: 21.00-31.00 EA. PHEASANTS: NONE. DOVES: 3.00 EA. QUAIL: CHICKS .30. GUINEA PIGS: .25 EA. RABBITS: UNDER 4 LBS. 1.50-3.50, 4-6 LBS. 4.00-6.00 EA., OVER 6 LBS. 6.00, ALL EACH.

For more information phone 717-242-2898.

**Eastern Region Miscellaneous Poultry**

Atlanta, GA.

July 20, 2001

Report Supplied By USDA

DUCKLINGS: Prices negotiated by first receivers, US Grade A, 4-5 pounds, delivered in trucklot and pool trucklot quantities: LONG ISLAND—Frozen 137; Fresh 143. MIDWEST—Frozen 122-126 mostly 122-124; Fresh— 123-127 mostly 123-125.

ROASTERS: Prices negotiated by first receivers, US Grade A and Plant Grade, 5 pounds and up, delivered: ICE

PACKED (12 per box) 68-69. VACUUM PACKED (6-9 per box) 62-85 mostly 63-71.

SQUABS: New York Wholesale Prices, Frozen, Plant Grade, dollars per dozen, 1 to 10 boxes: 12 oz. 60.48-69.66; 14 oz. 66.96-76.14; 16 oz. 73.44-83.43.

The eastern region includes: CT, DE, FL, GA, MA, MD, ME, NC, NH, NJ, NY, PA.

**Livestock Cooperative Auction Market of North Jersey Poultry & Egg**

Hackettstown, N.J.

Report Supplied by Auction Tuesday, July 24, 2001

HEAVY FOWL 2.25 EA., 40-.85 LB. MIXED FOWL 3.25 EA. ROASTERS 4.50 EA. PULLETS 1.75-5.50 EA. GEES 3.00 EA., .80 LB. BANTAMS 1.00-3.50 EA. ROOSTERS .75-6.00 EA., 1.35-1.50 LB.

BUNNIES .75-4.00 EA. DUCKS 3.25-7.50 EA., .90 LB. RABBITS .50-1.35 LB. PIGEONS 2.00-4.50 EA. GUINEAS 1.50-3.50 EA. GRADE A EGGS: WHITE JUMBO EX. LRGE. .67-.80, LARGE .59-.65; BROWN EGGS JUMBO, EX. LRGE. 1.01, LARGE .90-1.01, MEDIUM .62.

**Morrison's Cove Poultry & Rabbit**

Martinsburg, Pa.

Report Supplied by Auction Monday, July 23, 2001

ROOSTERS 3.00-6.25. BANTY ROOSTERS 2.00. HEAVY HENS .50-3.75. BANTY HENS 1.00-2.75. PIGEONS 1.75-2.00. GUINEAS 3.75. DUCKS 2.00-4.50. MUSCOVY HENS 4.50. MUSCOVY DRAKES 8.00. GEES 3.00. BUNNIES .10-1.50. RABBITS 1.50-5.50. WHITE DOVES 5.00. QUAIL .50-4.00. PEACOCKS 22.50. AUCTION EVERY MON., 7:30 P.M.

**Shippensburg Hay Auction**

Shippensburg, Pa.

Report Supplied by Auction July 21 and 24

Hay—Straw—Grain 32 LOADS. ALFALFA: 77.50-135.00. MIXED HAY: 65.00-90.00. TIMOTHY: 35.00-105.00. CLOVER: 82.50. BROMEGRASS: 90.00. STRAW: 82.00-102.50. EAR CORN: 65.00-70.00. OATS: 1.50 BU. MULCH: 10.00-22.00.

for the personal touch

**McCoy Cattle Co.**

Lancaster Stockyards

Your Marketing Link to the Eastern Cattle Feeder

Contact: Bill McCoy Pat McCoy  
Office: 717-397-5122 Res: 717-656-0296  
Res: 717-569-5044 Cell: 717-475-5122

**CONESTOGA VALLEY ENTERPRISES**

HI-MAG Agricultural Lime Spreading HI-CAL



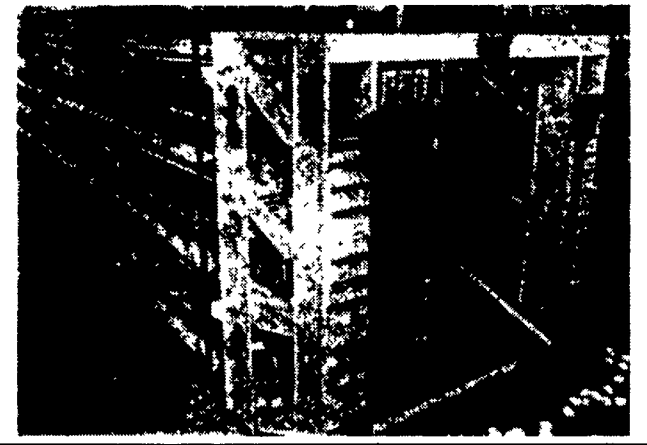
Cash Discount Savings on Delivery Call Toll Free day and evening 1-800-724-3277 Serving PA, MD, Delmarva, NJ, NY & (LI)

**LEESPORT FARMERS MARKET**  
LEESPORT, BERKS COUNTY, PA 19533 (610) 926-1307  
**LIVESTOCK AUCTION**  
EVERY WEDNESDAY - 1:00 P.M.

Farmers Market 9:00 AM to 8:00 PM  
Flea Market 7:00 AM to ??  
visit our website: www.leesportmarket.com

**Multi-Deck Layer Cage System**

- Automated system for feeding, watering, egg collection & manure removal
- Provides stress free environment
- Solid partition walls
- Plastic coated removable floor
- Produces more eggs per hens housed
- Lower feed conversion and mortality rate
- Increases profits



**COMPOST CAT™ HIGH-RISE LAYER HOUSE COMPOST SYSTEM**

The composting process eliminates methane gas and hydrogen sulfide odors while converting manure in a pathogen-free, weed seed-free organic product that will never revert to raw manure. The end product is a stable organic material which has retained most of its nutrients and is no longer a breeding source for flies, beetles or other insects.

**Farmer Automatic OF AMERICA, INC**  
1-800-683-2634  
Sheldon Goodine Regional Manager

**Zeiset Equipment**  
2187 North Penryn Rd., Manheim, PA 17545  
Phone (717) 665-4056 Fax (717) 665-2240

**HAY, STRAW & GRAIN SALE**  
Every Thursday at 12 NOON  
**Vintage Sales Stables, Inc.**  
(Rt. 30, Paradise, PA)  
For more information (717) 442-4181 (717) 768-8204

**HAY, STRAW & GRAIN SALES**  
Hay And Straw Sales Will Start At 10 A.M. Every Wed.  
**WOLGEMUTH'S AUCTION**  
formerly Good's Auction  
109 North Maple Ave.  
Leola, PA 17540  
717-656-2947