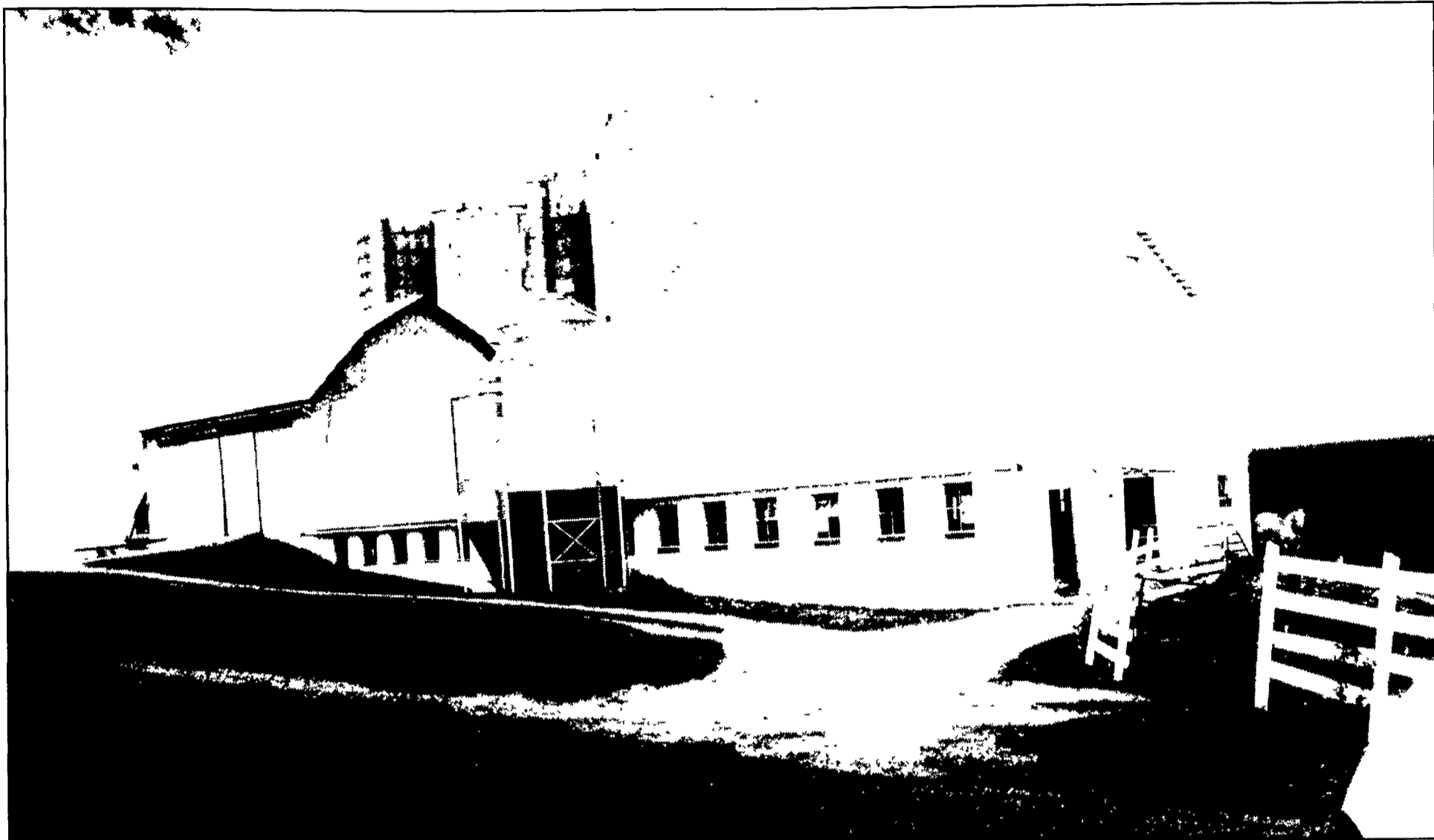


Susquehanna County Glemboski Farm



Featuring Holstein/Jersey crossbreds, this Susquehanna County farm is owned by Betty Glemboski. Glenn and Arlene Stevens recently took over its management.

Betty Glemboski said, "After spending our life working and building a farm to be proud of, we had to rent it out. It was the

answer to a prayer to have Glenn (Stevens) and his family come along. They are excellent caretakers and wonderful neighbors, especially since the illness and recent death of my husband of 52 years. I hope they have many more rewarding years here."



POWDER COATED STEEL DAIRY BARN EQUIPMENT

LOOP STALLS

All Loop Stalls Are Coated With Baked-On Top Grade Polyester TGIC Powder Coating After Fabrication

- Super Tough Finish • Protection From Rust & Corrosion • Resists Acid & Chemicals
- Chip Resistant • Superior Electrical Insulation • Smoother Finish Stays Cleaner

LOOP STALLS WIDE FRONT FEATURING

- The most versatile of all loop stall designs
- Greater cow comfort when entering and exiting stalls
- Sufficient lunge space for head and neck between top and bottom of loop



SUSPENDED COMFORT STALLS

Finished With Baked on Top Grade Polyester TGIC Powder Coating, After Fabrication

- Increased comfort for cows
- Easy cleaning
- Easy access for bedding & milking
- Adjustable tie rail
- Fewer trampled teat problems
- Durable powder coating resists manure acids & chemicals
- Powder coating helps insulate against stray voltage problems

Fabricated for Durability & Dependability

- All welded construction for many years of trouble free service.
- Stalls are constructed with 1.9 O D (.133) wall, high strength tube and 2" square post with 1/4" wall.



GATES & FENCING

Finished with Top Grade TGIC polyester Coating

All Gates & Fencing Made Of 1.9" Outside Diameter High Yield Steel Tubing With 13 Ga. Wall

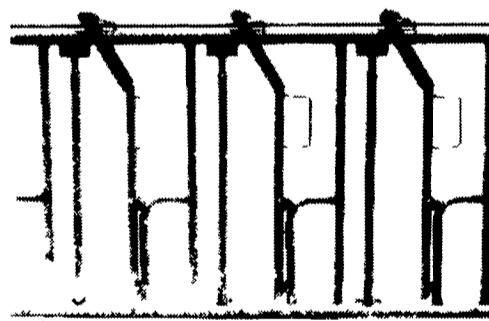


**Congratulates
The 2001
Award Winner**

**Dairy
of
Distinction**



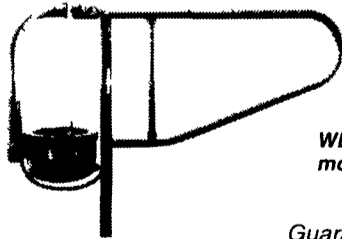
HEADLOCKS EXTRA HEAVY CONSTRUCTION



**Three
Sizes
Available
To Meet
All Your
Cattle
Handling
Needs**

New Zimmerman Water Bowls

IMPROVE YOUR AVERAGE Increase Milk Production... Naturally!

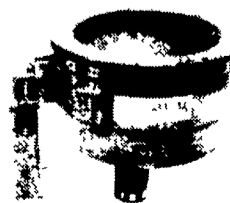


WB95P, mounted on stanchion

Guaranteed Unbreakable

Available in 2 models for both pressurized and gravity systems, they can be built into new, or added to existing, tie stall housing

Improve your average! Call today for more information



WB95G, with optional splash guard

Supplying fresh water continuously, with larger bowls & instant recovery, you get more milk... at no extra cost... naturally!

- 3 gallon capacity
- PVC construction
- Exceptional durability
- Minimize water waste



Hours Mon. Thru Fri. 7 to 5 295 Woodcorner Rd., Lititz, PA 17543-9165
717-738-7365 1 Mile West of Ephrata