

**St. Louis Feeder Cattle**

Greenville, IL  
July 26, 2001

Report Supplied By USDA

Cattle and calves: 550 head. Compared to last week slaughter steers and heifers were fully steady, except Holstein steers were firm to 1.00 higher. Supply was mainly Choice slaughter steers and heifers. Moderate supply of holstein steers.

Total Receipts this week: 550 Last week: 700 Last year: 725

SLAUGHTER STEERS: Choice 2-4 1025-1475 lbs 70.00-73.00; 950-1000 lbs 69.00-70.00; 1450-1650 lbs 68.00-70.00; YG 2-3 and Fancy 2-4 1125-1450 lbs 73.00-75.00; Prime 2-4 1175-1450 lbs

75.00-76.00. Select and Choice 2-3 950-1350 lbs 67.00-70.00. Select 2-3 950-1400 lbs 63.00-67.00.

HOLSTEIN STEERS: Choice 2-3 1250-1700 lbs 66.00-70.00. Prime 2-3 1300-1500 lbs 70.00-71.00. Select and Choice 2-3 1200-1500 lbs 63.00-66.00. Select 2-3 1250-1400 lbs 59.00-63.00, Low Yielding 55.00-59.00.

SLAUGHTER HEIFERS: Choice 2-4 1000-1375 lbs 70.00-73.00; 2-3 and Fancy 2-4 1150-1400 lbs 73.00-75.00. Prime 2-4 1150-1375 lbs 75.00-76.00. Select and Choice 2-3 875-1300 lbs 67.00-70.00. Select 2-3 850-1275 lbs 63.00-67.00.

HEIFERETTES: Medium and Large Frame 1050-1550 lbs 51.00-60.00.

FEEDER CATTLE: Compared with last week, feeder steers were 3.00-5.00

higher. Feeder Heifers and Holstein steers were steady. Overall quality was above last weeks level. Large buyer attendance.

FEEDER STEERS: Medium and Large Frame 1-2: Thin: 300-400 lbs 100.00-110.00, fancy 110.00-121.00 400-500 lbs 95.00-103.00, fancy 103.00-109.00 500-600 lbs 92.00-100.00, fancy 100.00-104.00 600-700 lbs 87.00- 94.00 700-800 lbs 84.00- 90.00 Moderately Fleishy: 500-800 lbs 82.00- 92.00

Holsteins Large Frame 2-3: 100-200 lbs 110.00-130.00 200-300 lbs 109.00-112.00 300-400 lbs 85.00-100.00 400-600 lbs 78.00-86.00

FEEDER HEIFERS: Medium and Large Frame 1-2: Thin: 300-400 lbs 90.00-100.00 400-500 lbs 87.00-95.00 500-600 lbs 83.00-90.00, fancy 90.00-

•North Central - OH, IN, IL, MI & WI.  
•Northeast - MA, MD, PA, NY, NJ, DE, CT & VT.

WEEKLY DISTRIBUTIVE/LCL EAST COAST AREA VEAL CUTS TRADE, SPECIAL FED: Market for Tuesday, July 24 - Compared to last week: Distributive special fed veal cuts are mostly steady. Movement is slow on light to moderate offerings and demand.

Prices per hundredweight: Carcass, hide-off, 200-250 lb 225-245.00; foresaddles 85-110 lb 165-180.00; kosher foresaddles 90-110 lb 185-200.00; hind-saddles 85-115 lb 270-300.00; loins, regular 17-25 lb 250-300.00; loins, 4x4, trimmed 12-18 lb 400-525.00; hotel racks, 8 rib 15-21 lb 350-400.00; hotel racks, 7 rib 14-20 lb 375-435.00; hotel racks, 6 rib 13-17 lb 470-525.00; chuck, square cut 36-47 lb 95-105.00; shoulder, full 14-20 lb 130-170.00; legs, double 70-90 lb 270-310.00; legs, TBS 3-piece 24-32 lb 550-630.00; legs, BHS heel-out 27-35 lb 400-450.00; top round, trimmed, cap-off 8-10 lb 820-875.00; breast 10-12 lb 70-95.00; necks, bone-in 24-28 lb 100-130.00; stew meat, regular 150-225.00; boneless veal trimmings 75-80% lean 62-70.00; heavy nature green hides, per piece 43-52.00.

**Livestock Cooperative Auction Market Of North Jersey**

Hackettstown, N.J.  
Report Supplied by Auction  
Tuesday, July 24, 2001

CALVES .01-4.70.  
COWS .27-.55.  
EASY COWS .14½-.45½.  
FEEDERS 300-600 LBS. .19-1.12½.  
HEIFERS .45¼-.72.  
BULLS .48½-.60.  
STEERS .49½-.65½.  
HOGS NONE.  
ROASTING PIGS EACH NONE.  
BOARS NONE.  
SOWS .34.  
SHEEP .25-.69.  
LAMBS EA. 33.00.  
LAMBS PER LB. .50-1.23.  
GOATS EA. 30.00-135.00.  
KIDS EA. 5.00-72.50.  
HIDES 18.00.  
TOTAL: 592 HEAD.

**East Coast and North Central Veal Report**

Des Moines, Iowa  
July 25, 2001

Report Supplied By USDA

**CARLOT VEAL CARCASS REPORT:**

Northeast and North Central Basis: Compared to trading last week: Northeast special fed veal steady on mostly light to moderate offerings and demand. North Central not tested.

VEAL CARCASS, SPECIAL FED, HOT BASIS, FOB PRODUCTION POINTS: Hide-One, 240-300 lb: Northeast 650 head; North Central 0. Hide-Off, 215-275 lb: Northeast 210.00; North Central no quote.

CONTRACT INFORMATION: Hot Basis, Hide-Off, as of July 25 - Contract calves slaughtered this week: 210-213.00 Bottomside, 212-220.00 Topside. Packers calling market 208.50-210.00. Future contracts offered: Firm Bottom-Firm Top, 212-217.00 on Bottomside; 230.00 Topside. Firm Bottom, Split Top 214.00 Bottomside, 235 Topside. Firm Bottom-Open Top 215-217.00.

**Dewart Livestock**

Dewart, Pa.  
Report Supplied By Auction  
Monday, July 23, 2001

STEERS: 50.00-73.50.  
HEIFERS: TOO FEW TO QUOTE.  
GOOD COWS: 40.00-45.75.  
CANNERS AND CUTTERS: 20.00-40.00.  
BULLS: 1 AT 52.75.  
VEAL: 90-190 LBS. 100.00-475.00;  
70-90 LBS. 50.00-100.00.  
HOGS: 44.00-47.00.  
SOWS: NONE.  
FEEDER PIGS: 33.00-41.00 HEAD.

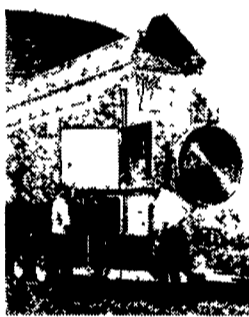
**YOUR GRAIN EQUIPMENT HEADQUARTERS**  
Sales • Service • Installation



provides personal service to every customer. That keeps us one step ahead of the rest.

- Weight-Tronix Feed Mill
- Bucket Elevators
- Feed Bins
- Air Drying Systems
- Transport Augers
- Strring Systems
- Wet Tanks
- Grain Dryers
- Utility Augers
- Grain Bins
- Parts & Motors

We Install Total Package.  
Or We Provide Free Bin-Jack Use With Your New Bin Purchase.



**AUTOMATIC BATCH OR CONTINUOUS FLOW GRAIN DRYERS**

The Competitive Edge  
"Smart system"  
eliminates guesswork.

Used GSI/Air Stream Automatic - Batch Grain Dryer Model #300AB - 250 BPH at 10 pt. LP Gas/1 Phase • Stainless Steel Sidewall Package Excellent Condition - 4 yrs. old



**ATTENTION GRAIN DRYER OWNERS**

Beat the Rush!  
Now is the time to have your grain dryer serviced.

We service all makes of dryers



**LAMBTON**  
CORPORATION  
**GALVANIZED BUCKET ELEVATOR**  
75 Years of Elevator Manufacturing Expertise

**TRUCKLOAD JUST ARRIVED!**

COMMERCIAL HEAVY DUTY SEALED BEARING FULLY ADJUSTABLE MOTORMOUNT  
HEAVY DUTY 3/4 THREADED HEIGHT ADJUSTMENT  
14 GA GALVANIZED TUBING  
HEAVY DUTY SPIDER CAGE GUARD  
10 GA HEAVY DUTY FLIGHTING  
DURABLE ONE PIECE MOTOR MOUNT  
DURABLE ABS SPOUT  
POWDER COAT LONG LASTING  
13' SIZE B 1 OR 2 GROOVE PULLEY



**MODEL 40 GRAIN CLEANER**  
Also available up to 3,000 bu/hr. capacity  
In Stock Now.  
Call For Pricing

**HIGH CAPACITY GRAIN UNLOADER**

**FASTIR™ STIRRING MACHINE**



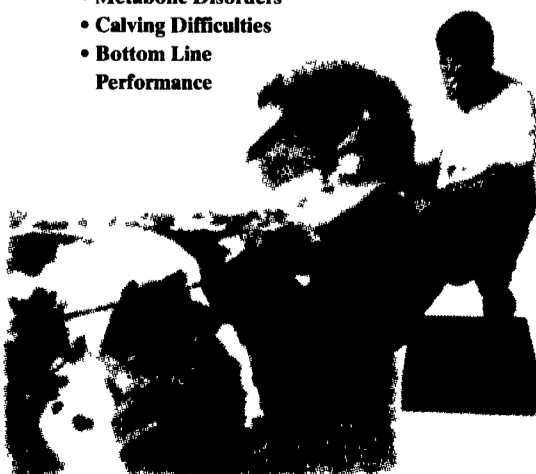
**Solutions Designed by Technology and Experience**

Cargill Animal Nutrition combines experience and technology to design solutions for challenges facing the dairy industry...

- Herd Health
- Metabolic Disorders
- Calving Difficulties
- Bottom Line Performance

Our Consultants design customer solutions using tools, technology and resources to operate your dairy at an optimum level, achieving...

- an increase in production
- goals and profits
- herd health
- nutrient management balance
- record analysis
- cow comfort evaluation
- commodities purchasing analysis



**CARGILL Animal Nutrition**

Dairy Focus

World Class Solutions. First Class People.

Lebanon, PA • Roaring Spring, PA • Walkersville, MD  
1-800-613-4459

**ACE Hardware**  
Your Helpful Hardware Folks!

**EMHERR EQUIPMENT, INC.**

**FARM & HOME CENTER**  
464-3321 or 800-732-0053

www.acehardware.com/emherr  
Herrville Rd & Rt 272 South  
2 1/2 Miles South of Willow Valley Square  
Not Responsible For Typographical Errors

Mon.-Fri. 6:30 am-8:00 pm

Sat 7:30 am-6:00 pm



UPS Drop Point