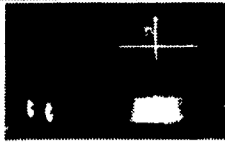




**HOSTETLER**  
**Truck Bodies & Trailers**  
**717-667-3921**  
 Milroy Exit off Rt. 322  
 Between Lewistown & State College



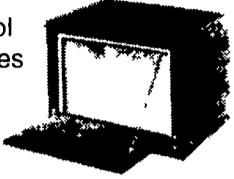
Corn Pro Bumper Pull Livestock Trailer, Corn Pro, Rubber Torsion Axles, Treated Pine Floor  
 6'x16' 3500# Axles **\$3,575**  
 6'8" Wide x 16' Long 3500# Axles **\$3,825**  
 6'8" Wide x 16' Long 6000# Axles **\$4,195**

**Financing & Leasing Available**



Gooseneck Roll Back Trailer 26' Long 20,000# GVW with Heavy Duty 10,000# axles, 10,000# Winch 2 Speed Jack Electric/Hydraulic Pump Spare Wheel & Tire  
**\$14,500** In Stock.

Tool Boxes



18 x18"x42" 36"x18"x18"  
 24"x18"x18" 42"x18"x18"  
 30"x18"x18" 48"x18"x18"



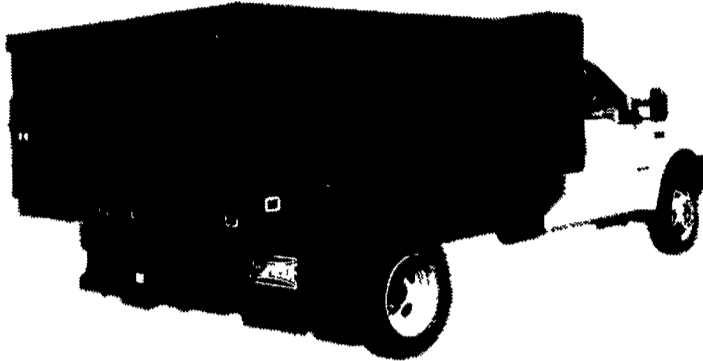
Hydraulic Tilt Deck Trailer  
 19' - 10,000 GVW **\$3,995**  
 19' - 12,000 GVW **\$4,295**  
 Also Available in 21



Moritz Livestock Trailers Semi Round Front, New Sides and Rear  
 6' x 16' 7000# GVW **\$3,575**  
 6'8" x 16 Long 7000# GVW **\$4,125**

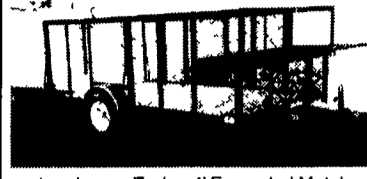
**FEATURE PRODUCT**

**LANDSCAPE BODY**



Bulk Cargo Doors, Side Cargo Door, Rear Cargo Doors, Double-Acting Tailgate, Center Metering Gate, Lockable Tool Storage, 11' Long With 40" High Sides

**CALL FOR MORE INFO**



Landscape Trailer, 4' Expanded Metal Sides, Tool Box Trimmer Rack, Ramp Gate, 7'x12'  
**\$1,650**



E Z DUMPER TRUCK INSERT DUMP 6,000# Capacity Self Contained  
**Special \$1,795**



E Z Dumper 610UDT Dump Trailer 10,000# GVW, Electric Hydraulic Pump & Hoist, Electric Brakes, H D Battery  
**\$3,295**



Moritz Skid Loader Trailers 82 Wide Between Fenders Rubber Torsion Axles Treated Pine Floor 10,000# Drop Leg Jack Spare Wheel & Tire Adj Coupler 10,000 GVW Available in 7 Colors  
**\$2,985**  
**\$3,150**



18' Deck Over Trailer, 16' Flat 4' Dovetail with 5' Ramps, 10,000 Lg GVW, Adj Coupler  
**\$3,695**

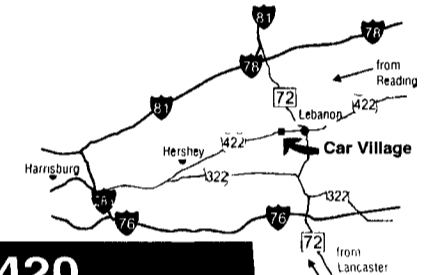


8' Pickup Replacement Flatbed Cash & Carry  
**\$675**

**Business Hours:**  
 Mon.-Fri. 9 to 9;  
 Sat. 9-4

2300 W. CUMBERLAND ST. (Rt. 422)  
 LEBANON, PA 17042  
 (Across From Lebanon Valley Mall)

**CAR VILLAGE**  
**HEAVY DUTY TRUCKS**



**PHONE 717-274-2000 Toll Free 1-800-650-1420**



L-PAK RACK BODY DUMP 87 DODGE 350 L-Pak Tool Boxes, 9 Ft Body, V8, 4 Sp, Only 78,000 Original Miles  
**\$8,500**



MECHANIC'S BODY 96 FORD SUPER DUTY Clean Tk, Ready For Work, 15,000 GVW, Powerstroke Turbo Diesel, AT, A/C, 9 Foot Body, Chrome Simulators, Will Sell As Chassis



ONLY 3,600 MILES 96 CHEVY STAKE BODY DUMP Sealing Is Believing, Very Nice Tk, 350 Vortec V8 AT, A/C, 12 Ft Dump Body, Rear Lift Gate, Plenty Of Uses For This Tk



6 SP, 4x4 2000 FORD F350 SUPER CAB DUALLY Opening Rear Doors, Strong Powerstroke Turbo Diesel, 6 Sp, A/C, Capt Chairs, Console, Loaded, XLT, Limited Slip Axle, Tow Pkg, New Tk Warranty



1 TON DIESEL - 99 FORD F350 4x4 Powerstroke Turbo Diesel, 6 Sp Trans, Trailer Tow Pkg 3 73 Limited Slip Axle, Heavy 9 900 GVW, Alum Wheels, Ready To Go



FARM DUMP TK. 85 FORD F350 Runs Great, Fuel Inj., V8, 5 Sp, Dual Tank, Nice Body



ONLY 10,000 MILES 95 FORD F350 4x4 MECHANICS TRUCK 95 DODGE 3500 Put It To Work, Cummins Turbo Diesel, AT, A/C, 8 ft Stahl Body, Ladder Racks, only 57,000 Miles



4x4 MECHANICS TRUCK 95 DODGE 3500 Put It To Work, Cummins Turbo Diesel, AT, A/C, 8 ft Stahl Body, Ladder Racks, only 57,000 Miles



**2000 DODGE 2500 SL QUAD CAB**

Like New, Only 27,000 Miles, Remaining New Truck Warranty. 24 Valve Cummins Turbo Diesel, 5 Sp, A/C, Front & Rear Dana Axles, Limited Slip Axle, Tilt, Cruise, Tow Pkg, Nice Truck! Great Price!  
**Priced Right \$26,900**



ONLY 10,000 MILES • 2000 FORD F350 SUPER CAB DUALLY 4 WHEEL DRIVE Like New, It's Perfect Powerstroke Diesel, AT XLT Lariat Pkg, Full Power, All Options, Tow Pkg, Aluminum Wheels



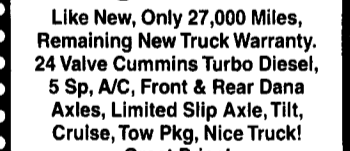
EBY ALUMINUM FLATBED 2000 FORD 450 4x4 Like New, Only 1300 Miles, Remaining New Tk Warranty, Powerstroke Diesel, AT, A/C, Loaded, XLT, Lots Cheaper Than New, Look At This One



4X4 FLATBED 95 FORD F350 Strong & good looking, powerstroke turbo diesel, AT, Vinyl Seat & Floor, Limited Slip Axle, 8 Ft Body, Removable Sides



EBY FLATBED 2000 FORD F-350 SUPER DUTY Great Hauling Machine, Only 6,900 Miles, Powerstroke Diesel, AT, A/C, Capt Chairs, Console, 6-Way Power Driver Seat, Gooseneck Ball, heavy 17,500 GVW



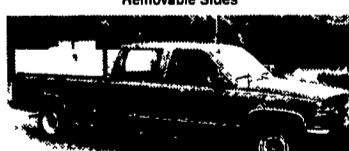
5 SP POWERSTROKE 96 FORD F250 4X4 Gorgeous Tk, 66,000 Original Miles, Powerstroke Diesel, 5 Sp, A/C, Dual Tank, Tow Pkg, Lock Out Hubs, Aluminum Wheels, You'll Like This One



\$21,500 99 FORD F250 SUPER DUTY PICKUP 4X4 Local 1 Owner Trade, Heavy Duty, 8800 G V W, Powerstroke Turbo Diesel, 6 Sp, A/C, Great Wk Tk, Cloth Seat, Vinyl Floor, Remaining New Tk Warranty



MECHANIC'S BODY 99 CHEVY HD 3500 Super Clean, Only 27,000 Miles, High Output 6.5 Turbo Diesel, AT, A/C, 11 Ft Reading Body, Tow Pkg, Remaining New Tk Warranty



WORKING MAN'S 4 DOOR 94 CHEVY C-3500 4 Door, Local 1 Owner Trade, Only 60,000 Miles, 350, V8, Auto, Vinyl Seat & Floors



\$21,900 97 DODGE 2500 CLUB CAB 4x4 Cummins Turbo Diesel, AT, A/C, Laramie SLT Pkg, Fact Tow Pkg, Class 4 Hitch, Chrome Wheels, New Service & Insp, Ready & Waiting For You



5 SP POWERSTROKE 96 FORD F250 4X4 Gorgeous Tk, 66,000 Original Miles, Powerstroke Diesel, 5 Sp, A/C, Dual Tank, Tow Pkg, Lock Out Hubs, Aluminum Wheels, You'll Like This One



4x4 DIESEL SUPER CAB 99 FORD F250 XLT LARIAT Nice Loaded, All Options, Powerstroke Diesel AT A/C, Capt Chairs, Console, Aluminum Wheels, Tow Pkg, Remaining New Tk Warranty



FLATBED DUMP 97 FORD F350 Very Clean, Only 50,000 Miles, 351 Fuel Inj., V8, AT, 9 Ft Steel Body



REAR LIFT GATE 2000 FORD E350 CUBE VAN Like New, Only 12,000 Miles, Powerstroke Diesel, AT, A/C, 11 Ft Body, Roll Up Rear Door, New Tk Warranty



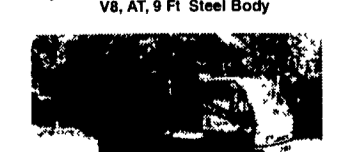
\$19,900 93 FORD F250 4X4 Heavy Duty 3/4 Ton, Nice Local Trade, 7.3 Diesel, AT, AC, Lock Out Hubs, Dual Tanks, Runs, Looks Great



\$19,900 97 DODGE 2500 4X4 Good Looks & Great Truck Cummins Turbo Diesel, AT, AC, Limited Slip Axle, Tow Pkg, Aluminum Wheels



5 SPEED CREW CAB • 95 FORD F350 DUALLY This Is One Awesome Towing Machine, Powerstroke Diesel With Banks, Power Pak - 5 Spd, 4 10 Gear Gooseneck Hitch, Only 41,000 Miles Aluminum Wheels



RARE FIND 99 MITSUBISHI FUSO 4WD, Only 7,000 Miles, Turbo Diesel, 5 Spd, A/C, 12 Ft Steel Body



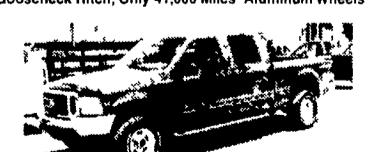
12 FT FLATBED 98 DODGE 3500 Nice, Clean, Only 30,000 Miles, 24 Valve Cummins, Turbo Diesel, 5 Spd, A/C, 4 10 Gear Tow Pkg



4 DOOR SHORTBED 97 FORD F250 4X4 Plenty of Power, Plenty of Room, Powerstroke Turbo Diesel, AT, A/C, Load'd XLT, Tow Pkg, Aluminum Wheels, Dual Tanks, All The Good Stuff



5 SP DIESEL 97 FORD F250 4x4 Heavy Duty 3/4 Ton, only 41,000 Miles, Powerstroke Turbo Diesel, 5 Sp, A/C, Loaded XLT, Lockout Hubs, Aluminum Wheels, Big Swing Out Mirrors



4 DOOR F250 99 FORD 4 Wheel Drive, Plenty of Room For The Family & Power To Tow, Remaining New Tk Warranty, Only 30,000 Miles Powerstroke, Turbo Diesel, AT, A/C, Loaded & Nice