

A20-Lancaster Farming, Saturday, July 21, 2001

**Four States Livestock**

Hagerstown, Maryland  
Report Supplied by Auction  
July 18, 2001

SLAUGHTER COWS: 112 HEAD, STEADY TO 1.00 HIGHER. BREAKERS 45.00-49.00, HIGH DRESSING 50.00-52.00, BONERS 40.00-45.00, LEAN 37.00-41.50, THIN 37.00 DOWN.

BULLS: 8 HEAD. YG#1 55.00-57.00, 1 HIGH DRESSING 1728 LBS. AT 62.00, YG#2 50.00-55.00.  
FED STEERS: LOW CHOICE 1100-1350 LBS. 66.00-70.00, SELECT 59.00-64.00.  
FED HEIFERS: LOW CHOICE 1108 LBS. AT 65.25, SELECT HOLSTEINS 52.00-56.00.

CALVES: 177 HEAD. 1 GOOD 175 LBS. AT 84.00, GOOD 80-110 LBS. 60.00-75.00; HOLSTEIN BULLS RETURNING TO FARM, STEADY PRICES. #1 90-120 LBS. 125.00-142.00, 75-90 LBS. 97.00-115.00; #2 90-120 LBS. 100.00-120.00, 75-90 LBS. 70.00-95.00; HOLSTEIN HEIFERS 24 HEAD. #1 90-115 LBS. 440.00-550.00, #2 80-115 LBS. 250.00-420.00, 60-80 LBS. 170.00-220.00; BEEF X BULLS AND HEIFERS #2 70-110 LBS. 140.00-155.00.  
BUTCHER HOGS: NONE.  
SOWS: 8 HEAD. 300-475 LBS. 36.00-38.75, 500-700 LBS. 35.00-40.00.  
BOARS: 2 HEAD. 400-650 LBS. 22.00.

STOCK CATTLE: 140 HEAD, IN-

CLUDES 47 HOLSTEIN HEIFERS. STEERS 200-400 LBS. 84.00-95.00, 500-700 LBS. TO 90.00, 700-900 LBS. 66.00-75.00.

HEIFERS: MED. AND LARGE FRAME 200-400 LBS. 83.00-95.00, FEW TO 109.00, 400-600 LBS. 83.00-94.00, 600-700 LBS. 68.00-77.00, 2 AT 87.00, 700-900 LBS. 65.00-72.50.

BULLS: MED. AND LARGE FRAME 200-400 LBS. 89.00-104.00, 400-600 LBS. 80.00-97.00, 600-700 LBS. 63.00-78.00.

DAIRY REPLACEMENTS: 31 HEAD, VERY ACTIVE SALE! LARGE SPRINGERS 1400.00-1735.00, MED. SPRINGERS 900.00-1200.00, LARGE FRESH 1200.00-1600.00, MED. FRESH 750.00-1050.00, SMALL 400.00-800.00; HEIFERS 47 HEAD. SHORT-

BREDS TO 1025.00, LARGE OPEN HEIFERS 825.00-1110.00, MEDIUM 500.00-900.00, SMALL 335.00-535.00; HOLSTEIN BULLS 11 HEAD. LARGE 525.00-600.00, MEDIUM 400.00-575.00.  
PIGS AND SHOATS: BY THE HEAD, 57 HEAD 20-35 LBS. 22.00-43.00, 4 HEAD 50 LBS. AT 51.00.

LAMBS: 14 HEAD. HIGH CHOICE TO PRIME 112 LBS. AT 78.50, 1 LOT 90 LBS. AT 84.00, 6 HEAD GOOD 53 LBS. AT 85.00.

**Middleburg Livestock Auction**

RR3 PO Box 185  
Middleburg, Pa. 17842  
Report Supplied by Auction  
July 17, 2001  
SMALL RABBITS 1.00-2.75.

MEAT RABBITS UP TO 8.75.  
GUINEA PIGS .25-1.00.  
DUCKS, MUSCOVY HENS 2.00.  
PEKIN DUCKS 2.00.  
GEESE 2.00-2.75.  
TURKEYS, YOUNG 9.00 EA.  
LARGE ROOSTERS 2.00-6.00,  
BANTAM 1.50-3.00.  
HENS 2.00-4.00, BANTAM 1.50-2.75.  
DUCKLINGS .50-.75.  
GOSLINGS .75.  
CHICKEN FAMILIES 4.00-7.00.  
CHICKS .25-1.25.  
BARN PIGEONS 1.00.  
WHITE PIGEONS 2.00.  
GUINEA CHICKS .50-1.25.

**Oklahoma Feeder Cattle Weekly**

Oklahoma City, OK  
July 18, 2001

Report Supplied By USDA

Oklahoma National Stockyards - Weekly Cattle Summary Compared to last week: Feeder cattle and calves steady to 2.00 lower. Demand good for feeder cattle. Demand moderate for new crop calves with buyers continuing to discriminate for kind and condition. Dry weather continues to bolster receipts with many Texas cattle still in the consist. Calves in medium to mostly fleshy conditions with several new crops. Receipts this week 12,700; last week 13,137; last year 10,693. Supply consisted of 64 percent yearlings over 600 lbs; 30 percent calves and light yearlings under 600 lbs; 6 percent cows and bulls. Heifers comprised 35 percent of feeder and calf supply.

Prices follow with weighted average weight and price in parenthesis.

**FEEDER STEERS:**

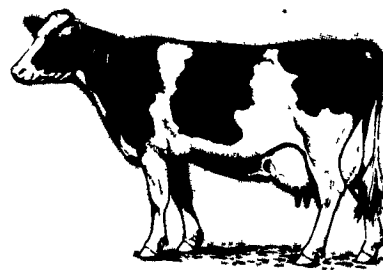
Medium and Large 1: CALVES. 400-450 lbs (435 lbs) 108.00-113.00 (109.96); 450-500 lbs (479 lbs) 101.00-113.50 (108.61), Fancy 450-500 lbs (487 lbs) 113.50-114.00 (113.90); 500-550 lbs (528 lbs) 96.00-104.00 (100.42); Fancy 500-550 lbs (531 lbs) 108.00-112.50 (109.20); 550-600 lbs (577 lbs) 94.00-102.00 (99.72); 600-650 lbs (625 lbs) 90.50-104.00 (97.99); 650-700 (672) 89.00-94.00 (92.45).  
YEARLINGS: 650-700 lbs (674 lbs) 94.00-98.50 (96.21); 700-750 lbs (735 lbs) 90.00-97.25 (91.95); 750-800 lbs (773 lbs) 88.50-92.50 (91.03); 800-850 lbs (821 lbs) 86.50-91.00 (88.97); 850-900 lbs (885 lbs) 86.75-87.75 (87.02); 900-950 lbs (909 lbs) 86.75-87.00 (86.80).  
HOLSTEINS: Large 3: 700-725 lbs 68.50-72.00.

**FEEDER HEIFERS:**

Medium and Large 1: CALVES: 350-400 lbs (373 lbs) 100.00-107.00 (102.90); 400-450 lbs (428 lbs) 97.50-105.00 (102.24); 450-500 lbs (462 lbs) 93.50-101.50 (94.96); Fancy 450-500 lbs (481 lbs) 105.50-106.00 (105.59); 500-550 lbs (525 lbs) 93.25-99.50 (96.90); 550-600 lbs (581 lbs) 90.25-95.00 (92.88); 600-650 lbs (618 lbs) 88.75-94.00 (91.23).  
YEARLINGS: 550-600 lbs (576 lbs) 90.50-99.00 (94.64); 600-650 lbs (618 lbs) 93.00-95.25 (94.02); 650-700 lbs (670 lbs) 86.75-90.75 (89.86); 700-750 lbs (730 lbs) 85.50-90.00 (87.06); 750-800 lbs (785 lbs) 86.50-87.00 (86.82); 800-850 lbs (835 lbs) 83.75-84.85 (84.72).



*The Huntsmans*



**Thanks & Congratulations**  
**Randy Huntsman**  
*Martinsburg,*

*Aluminum Tunnel  
Ventilated  
Freestall Barn*



*Freshening Pens*



*Total Curtain Gable Wall*

**KING CONSTRUCTION**

601 Overly Grove Rd.,  
New Holland, PA 17557

**717-354-4740**

• Custom Design And  
Construction Of All Types  
of Buildings  
For The Farm

Phil Van Lieu Home: 717-259-9077

**Lancaster Dairy Farm Automation**

"Large Enough to Serve You  
Small Enough to Care."

Lititz • Belleville  
• Martinsburg

**1-800-442-4587**

**PRECISE**

Concrete Walls, Inc.  
601 Overly Grove Rd.,  
New Holland, PA 17557

**717-355-0726**

See How Affordable Concrete Walls Can Be

"Quality Curtain Systems"

**Empire**

Agri-Systems, INC.  
404 Grant Ave. • Auburn, NY 13021  
**800-216-6029**



4754 State Rt. 233 P.O. Box 370  
Westmoreland, NY 13490  
**315-853-3936**  
Barn Equipment for the Commercial Dairyman



Ritchie  
Supplied by

**RYDER SU**

539 Falling Spr  
PO Box 2  
Chambersburg, PA 1  
Phone 717-26

