

## Whole Cottonseed

& Other feed ingredient needs:

For Competitive Prices & Timely Delivery

Call Perdue Commodities

Serving the dairy and feed industry

(717) 285-2694

## LOCUST AND LANCO

Fall Seed	Hauling
Alfalfa	Loader Work
Rye	Storage
Oats	Rent A Splitter
Barley	Rent A Saw
Wheat	Firewood
Timothy	Moving & Storage

2727 N. Colebrook Rd.  
Manheim, Pa. 17545

717-665-4821 Fax 717-665-9191

## SUPER CONDITIONED HAY

Softer & Sweeter

800 lb - 70 lb - 35 lb bales

Alfalfa Hay - Timothy -  
Timothy/Alfalfa Mixed - Wheat Straw

Heidel Hollow Farm

1-888-4BALAGE (422-5243)

www.baleinabag.net

## ALFALFA SEED \$1.40/Lb.

from the Dakota's Trask Family Seeds

- Features grower-to-grower direct seed sales
- SDSU tested
- Offered to growers for \$1.40/per lb in 60 lb bags plus freight
- Varieties: S D. Common, Vernal and others
- These alfalfa varieties are proven to compete with the expensive varieties in all conditions and always carry our money back guarantee

PA farmers have great hay crops with South Dakota alfalfa seed. Emery Zimmerman, Mifflin, PA says, "The South Dakota seed we planted in late April. It's good and thick, has good height, makes good haylage and excellent dry hay. Protein test 21.6 and RFV 132."

Join the numerous farmers in the PA/NY area harvesting wonderful alfalfa from South Dakota seed

Toll Free 877/798-5413 605/685-8601 Cell

Ask for references from your area

## GOOD QUALITY CORN SILAGE

From 2000 crop available now. Kernel processed & treated w/preservatives. Can deliver in your silo with blower & unloading truck or dump in your trench.

Call 717/872-9152  
or 717/371-5170  
for price

## BUYING EAR CORN

Shelled Corn & Soybeans  
Contract or Daily Price  
Picked Up At Field Or Delivered To Manheim  
(717) 665-9463  
FAX (717) 664-7533  
**NOLL GRAIN**  
Trailer loads of Mushroom Mulch available

## Farmers and Dairymen Want to Cut Bedding Costs?

Try Our Kiln Dried Wood  
Shavings/Sawdust  
Bulk or Bagged

Can Deliver

Berks, Lebanon & Lancaster Co.  
Extended Delivery into Nittany  
Valley, Nippinois, Sugar Valley  
& Brush Valley

Baumert's Wood Shavings

Call (570) 758-1744

or (570) 758-1745

## Wet Brewers Grain - Sawdust

Ernest J. Tomer  
Trucking, Inc.

3109 Belvidere Rd.  
Phillipsburg, NJ  
08865

908-475-2578

## Furst-McNess Company

Brewers Grain and  
Commodity Specialists

Wet Brewers Grains offers.

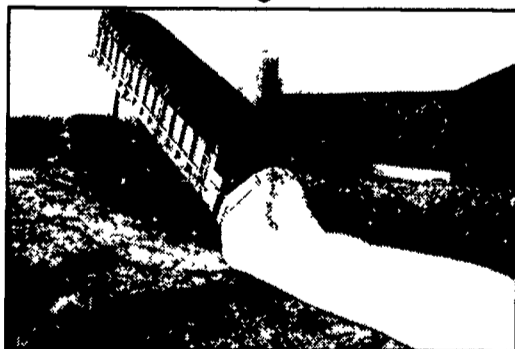
- Palatability that increases total feed intake
- Natural protein, possessing high rumen by-pass
- Digestibility and high energy
- Improved herd health
- **More Milk & profitable production**

For Superior Feeding Value, try a load.

Call Bob: 1-(800) 888-0230

Available bagged (pictured below) or bulk.

McNess



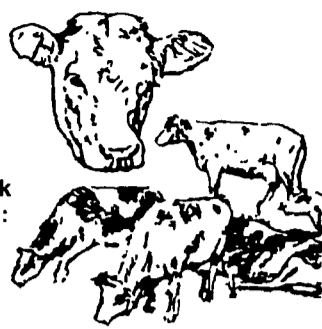
## GIVE'EM HELP WITH PRO-LIX

the profitable liquid feed  
for your cattle



They'll give it right back  
to you, with interest, in:

- Healthier Calves
- More Economical Production
- Better Reproduction Performance



PRO-LIX delivers the protein, vitamins and minerals your cattle need-when they need it and in the amounts they need. It increases cattle weight, fosters healthier calves and often helps to produce more calves. PRO-LIX is an extremely smart investment in the beef or milk that produces your profits-all year long.

WHITMOYER  
LIQUID FEED  
Myerstown, PA  
(717) 933-5011

Martin's  
AG SERVICE  
New Holland, PA  
(717) 354-4996

ROSS'S FEED  
& GRAIN  
Quarryville, PA  
(717) 786-7361



## Attention: Swine and Poultry Producers



Announcing:

Crude Soy Oil Now Available

With the addition of our new soybean processing facility, we now offer soybean oil as an animal nutrition product. Processing the soybeans ourselves allows us to utilize locally grown soybeans and support our local agricultural community!

### Crude Soybean Oil

A product of Keystone's expelling process, this oil can be used in a wide variety of on farm applications. Crude soy oil is a natural alternative to animal fats and provides needed energy in various rations.

### Uses of Crude Soy Oil Include:

- Use as a high energy feed ingredient in swine and poultry diets
- Especially useful in sow lactation diets, pig starter and grow/finish diets.
- Used as an added energy source in broiler, turkey and layer feeds
- Can be used for dust control purposes.
- Can be used as a lubricant for feeding systems

### Advantages of Crude Soy Oil:

- Use as a direct replacement for animal fat
- Vegetable based product.
- Holding tank does not need to be heated if temperature is above 30 degrees, which reduces storage and handling costs compared to animal fat.
- Bulk delivery, partial loads available direct to farm by Keystone Mills.
- Customer may pick up to save delivery costs

### Other Soy Products Available:

- Keystone offers Golden Pro 46 XP which is 46% protein - 6-7% oil, Golden Meal 40 which is 40% crude protein with 18% oil

### Keystone Mills Soybean Exchange Program

- We will take your soybeans in trade for Golden ProXP 46, Golden Meal 40.
- Contact Keystone Mills for details on our soybean exchange program featuring these quality nutritional products.



Keystone Mills

~Serving Agriculture ~ Since 1894 ~  
309 Martindale Road, Ephrata, PA 17522

717-354-4616 • 717-738-4251 • 1-800-733-4909

## QUALITY TIMOTHY HAY

4x4x8 Square bales  
For Horses or Cows  
\$75/TON

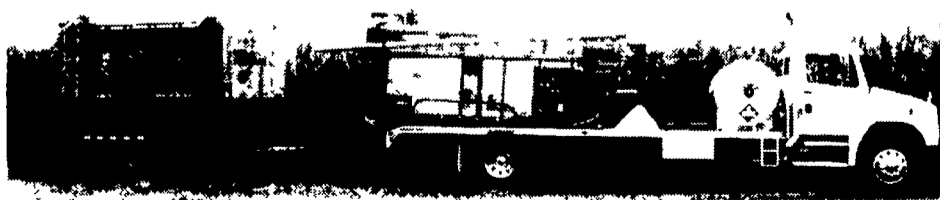
Free Delivery Within 100  
Miles

Lippy Brothers, Inc.

Hampstead, MD

410-239-3950 Daytime

## The ROAST-A-MATIC Grain Roaster & Cooler Unit is superior to other methods of heat processed grain



~ Prevents deterioration of elevator legs from hot grain condensation ~ Saves handling time ~ On the farm drying

Have your soybeans, corn, wheat, oats, sorghum and barley, roasted, cooled and stored on your farm

**SCHNUPP'S GRAIN ROASTING, INC.**

416 Union Rd., Lebanon, PA 17046

1-800-452-4004 717-865-6611

David N. Groff

Rt. #3, Lewisburg, PA 570-568-1420

- ~ Brings hot roasted grain to ambient temperature
- ~ No condensation on top of grain
- ~ Quality control - no hot spots from improper cooling
- ~ Grain can be put into storage cold

Contact us for the  
availability of roasted  
corn and soybeans.