

3 SILOS AND UNLOADERS

Silomatic 20' Ringdrive Silo Unloader, 2 yrs old, \$2,600; Hanson 24' Ringdrive Unloader, 1 yr old, \$3,000. 610-987-6136

20x70 Cropstore silo w/ unloader. 15x50 Cropstore slurry store. 610-932-8999

Goliath unloader, Spartan unloader, 35x20, 60x20, 80x20. 518-851-7517.

WANTED: Concrete stave silos, will remove. Fair prices paid. 610-273-3993, 1-800-860-3993.

S & S Silo Service

Buy ShotCrete Reroofing Tear Down Rebuild
Sell Extensions No Job Too Small or Too Large

Manufacturer & Builders of New Silos
Call For Free Estimate
610-273-3993 or 800-860-3993
3114 Compass Rd., Honey Brook, Pa. 19344

All Sizes of New S&S Silos Available



WARNING, ALL SILO OWNERS

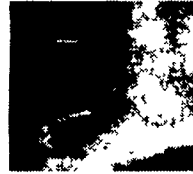
Check your silo now for rotten staves. If you have been using your silo for 10 to 15 years for either corn silage or haylage, it is time to SHOTCRETE

RESURFACES INTERIORS:

- Coats the silo's interior
- Protects feed in storage
- Durable, tough, acid-resistant
- Increase useful life
- Economical



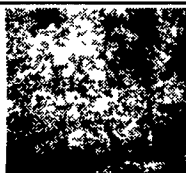
Before The silo's interior with plaster damage and stave exposed



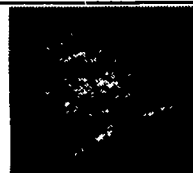
After The surface is reconditioned and a new thick tough surface will protect stored feed

REPAIRS HOLES:

- Repairs even large holes
- Up to twice the strength of the original stave
- Rapid application
- Durable surface



Before A hole is worn completely through the silo wall



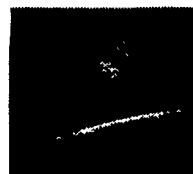
After With the hole repaired by ShotCrete and a new surface applied, the silo is ready for years of use

EXTENDS USEFUL LIFE:

- Support for old foundations
- Special repairs can be made.. quickly and economically
- Little or no forming needed
- Stronger than the original



Before The bottom part of the staves are completely worn away



After The ShotCrete System repairs and replaces the missing structure

S&S Silo Service Has More than 20 Years Experience
Recoating Silos With ShotCrete.
Call Us Today For An Estimate

USED SILOS & UNLOADERS AVAILABLE

- 24x8 **SOLD** stone
- 20' Hanson Centerdrive Unloader
- 18'x75' Lancaster Silo
- 20'x70' Lancaster Silo w/Hansom Ring Drive Unloader



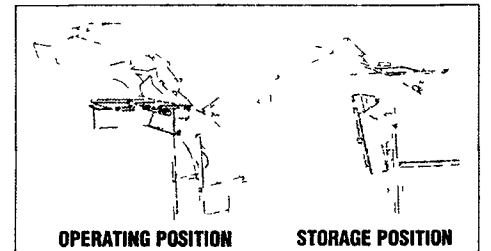
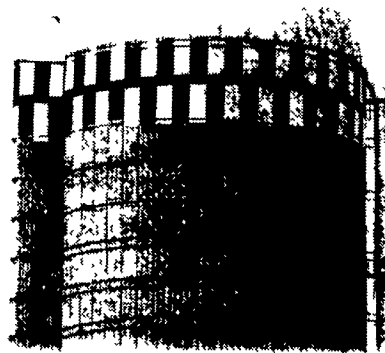
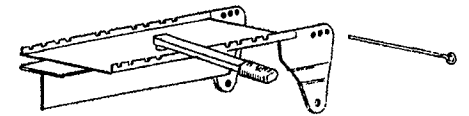
LANCASTER CONCRETE STAVE SILOS

MANUFACTURING and ERECTING CONCRETE STAVE SILOS FOR OVER 30 YEARS

FOR SILOS CALL 717-656-8636

2442 Creek Hill Rd., Lancaster, PA 17601

The New MaxPak™ Spreader Head



Now Silo Leveling Is 75% Faster

The New MaxPak™ Spreader Head for Multi-Flo® Silage Spreaders

- Specifically designed for topping off silos
- Direct silage precisely where you want it while standing on the fill platform
- Pack more silage into your silo
- Create a level surface for easier unloader start-up
- Easy to install, stores without tools
- Fits Multi-Flo Models 1030, 1200 BlueMax®



Silo equipment with a heritage of quality

Call today for the name of your nearest dealer

1-800-635-8708

www.lancasterlevel-flo.com

Main Office: Mount Joy, PA
Branch: Footville, WI

MaxPak patent pending

VOLUMAXX



GIVES YOU A CHOICE OF DISTRIBUTION

HI-LIFT LEGS



Volumaxx™ unloader. Expect the best from the leader.

We Carry The Complete Line Of Jamesway Products

Sales & Service

ROVENDALE AG & BARN EQUIP.

WATSONTOWN, PA 17777

570-538-9564 OR 570-742-4226

1-800-180 Watsontown Exit



“FARMERS CHECK OUT THE LATEST IN FEED STORAGE AND DELIVERY”

Standing under the elevated, drive-thru floor of a poured concrete silo are: Ken Mansfield and John Swope - salesmen for Star Silos, Mark and David Wolfskill, father - son farmers from Berks Co., and George Garman, Farm Manager of Detwiler Farms in New Enterprise, PA.

After punching in 1919 pounds of silage for his feed mixer, George pushed the button for his Big-Jim Quantum unloader to begin unloading, and it took 1 min. and 16 seconds to unload almost a ton of silage into the mixer. Asked if that was as fast as it would work, George said “no, but I don't want to overwork the unloader.”

To learn more about this new innovation in feed storage call:

SOLLENBERGER SILOS CORP.

1-800-909-6909

OR STAR SILOS, EASTERN DIVISION

1-800-431-7709

www.sollenbergersilos.com

