

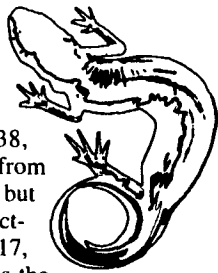


JULY 16-22, 2001

NEW MOON, JULY 20

HISTORICAL WRONG TURNS

The birth of "gerrymandering," the takeoff of "Wrong Way Corrigan," a good-bye to Ty, and the end to nickel-and-dime all share July 17 anniversaries. Elbridge Gerry, born July 17, 1744, gave his name to gerrymandering (trying to manipulate an electoral area) when he created a salamander-shaped district to favor his party. On July 17, 1938, pilot Douglas Corrigan took off from New York headed for California, but ended up a day later in an unexpected destination—Ireland. On July 17, 1961, Ty Cobb, known to many as the greatest baseball player ever, died of cancer. In 1997, Woolworth's announced that it was closing its 400 five-and-dime stores, ending a 117-year American tradition.



In order to become the master, the politician becomes the servant.

—Charles De Gaulle (1890-1970)

TIP OF THE WEEK

If your outdoor lights are on timers, adjust them for summer's shorter nights.

GREEN-TOMATO SALSA

- 1 red pepper, seeded and roasted
- 2 jalapeño peppers, seeded and roasted
- 4 or 5 large green tomatoes
- 2 small onions, chopped
- 3 cloves garlic
- 1 teaspoon sugar
- 1 teaspoon cumin
- 1/2 cup fresh cilantro or parsley salt and pepper, to taste

Blacken seeded peppers and jalapeños on a grill or under the broiler, turning until skins can be peeled. Combine all ingredients and chop coarsely. Season to taste, then refrigerate for at least 3 hours. Serve chilled, with chips.



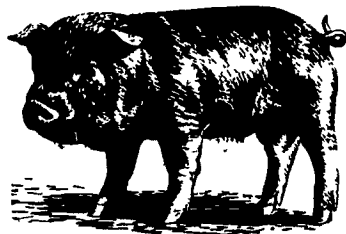
Makes 3 cups.

For recipes, gardening tips, and weather forecasts, visit www.almanac.com/go/uf7.

United Feature Syndicate

(Printed in the U.S.A.)

200 Madison Ave.
NY, NY 10016
(212-293-8500)



for the personal touch

McCoy Cattle Co.
Lancaster Stockyards

Your Marketing Link
to the Eastern Cattle Feeder

Contact: Bill McCoy
Office: 717-397-5122
Res: 717-569-5044

Pat McCoy
Res: 717-656-0296
Cell: 717-475-5122



PAINTING

All Types
Interior/Exterior
Including Aerial Work

Specialists in Sand Blasting and
Spray Painting Farm Buildings,
Feed Mills, Roofs, Tanks, Etc.

Also Roof Coating • Water Blasting
• Waterproofing on Stone and
Brick Buildings

Fisher's Painting

4056A Newport Rd.
Kinzers, PA 17535
On Rt. 772 Across From
Pequea Valley School

717-768-3239

OLD FARMER'S WEATHER PROVERBS



Pavements appear rusty before a rain.

Clear on St. Jacob's Day (20th) promises plenty of fruit.

Ne'er trust a July sky.

Old-Time Tomatoes
Re-create Grandma's garden with the help of our Guide to Heirloom Vegetables chart. Send \$3 to The Old Farmer's Almanac, Dept. HV, P.O. Box 520, Dublin, NH 03444, call 800-895-9265, ext. 220, or visit www.almanac.com/go/hv

Middleburg Livestock Auction

Middleburg, Pa.
Tuesday, July 10, 2001
Report Supplied By USDA
CATTLE 395...(PDA) (Supply included 153 steers and heifers, 127 cows, 12 bulls and 103 feeder cattle). Compared with last week's sale...steers steady to 1.00 higher, cows uneven 1.00 lower to 1.00 higher, bulls steady to 1.00 lower.
STEERS: High Choice and Prime 2-4 1290-1465 lbs 78.00-80.00, Choice 2-3 1100-1485 lbs 73.50-79.25, Select 1-3 69.00-75.00, Standard 1-2 64.50-67.50.
HOLSTEIN STEERS: High Choice and Prime 2-3 1310-1470 lbs 70.50-72.50, Choice 2-3 1170-1420 lbs 65.75-69.75, Select 1-2 58.75-66.00, few Standard 1-2 50.00-57.00.
HEIFERS: few Choice 2-4 1100-1250 lbs 74.25-77.50, few Select 1-3 68.50-71.50, few Standard 1-2 59.50-66.00.
COWS: Breakers 75-80% lean 45.00-50.00, Boners 80-85% lean 43.00-48.50, Lean 85-90% lean 39.50-47.00 mostly

Virginia Hay Auction

Richmond, Va.
Report Supplied By USDA
Thursday, July 5, 2001
Rushville Semimonthly Hay Auction, Harrisonburg, Va. on July 4: Price per ton FOB unless otherwise noted. Most loads delivered free within 10 miles of auction site. Delivery beyond 10 miles mostly 1.50 per mile. Prices mostly steady compared to two weeks ago. Volume - 94 tons.
Alfalfa: Large square, Premium 125-130.00.
Alfalfa/orchardgrass mix: Large round, Good 72.00 (1st cutting).
Mixed Grass: Small square, Good 1.80 per bale; Fair 1.10-1.15 per bale. Large round, Fair 22.00.
Orchard Grass: Large square, Premium 41.00 per bale (2nd cutting). Small square, Premium 117.00 (2nd cutting). Large round, good 55.00.
Straw: Large square 27-40.00.
Timothy: Small square, good 2.20 per bale.

CUSTOM MADE FEED BINS FOR FARMS - FEED MILLS



- Made of 13 gauge Steel
- All welded seams
- Gravity Flow or Auger

Free Estimates

Also - Steel Roof Trusses for Buildings - Portable Hog Buildings - Bucket Elevators - Grain augers Distributors - Flow Pipes & Accessories

We Sell, Service & Install

Ph: 570-345-3724

Fax: 570-345-2294

STOLTZFUS WELDING SHOP

Owner - Samuel P. Stoltzfus
RD 3, Box 331
Pine Grove, PA 17963

41.00-46.50. Shells 38.00 and down.
BULLS: Yield Grade 1 1100-2100 lbs 57.00-59.50, one 69.75, Yield Grade 2 1100-2020 lbs 54.25-56.25.
FEEDER CATTLE: STEERS: Medium and Large 1 520-565 lbs 86.50-89.00, one 930 lbs 74.50, Medium and Large 3 390-460 lbs 85.50-86.00, 500-750 lbs 66.00-80.00; HEIFERS: one Medium and Large 1 235 lbs 106.00, 745-825 lbs 71.50-74.00, Medium and Large 2 490-620 lbs 68.00-77.50, one Large 3 835 lbs 52.00; BULLS: few Medium and Large 1 730-760 lbs 70.00-70.50, 420-570 lbs 75.50-89.00, Medium and Large 3 315-385 lbs 63.00-80.50, 465-620 lbs 58.00-69.50.
CALVES 305...VEALERS: Standard and Good 70-110 lbs 40.00-60.00, Utility 55-90 lbs 10.00-35.00.
FARM CALVES: Holstein bulls 10.00 to 20.00 lower with late sales to 25.00 lower, Holstein heifers steady..No 1 Holstein bulls 90-120 lbs 140.00-167.00, with a few down to 135.00, 80-85 lbs 125.00-157.00, No 2 80-120 lbs 90.00-142.00 with weaker calves down to 70.00; No 1
Holstein heifers 85-120 lbs 380.00-565.00, No 2 70-115 lbs 200.00-360.00.
Beef type bulls and heifers 90-100 lbs 175.00-200.00.
HOGS 135...Barrows and gilts .25 to .50 lower, sows .50 higher. BARROWS AND GILTS: 45-50% lean 240-270 lbs 48.00-50.00, 40-45% lean 260-320 lbs 45.00-48.00.
SOWS: 1-3 335-485 lbs 42.25-44.25, 500-700 lbs 41.00-44.75.
BOARS: one 805 lbs 25.75, one lot 280 lbs 42.25.
FEEDER PIGS 22...Utility 40-60 lbs for slaughter 23.00-26.00. — per cwt.
SHEEP 10...Slaughter lambs 10.00 higher. SLAUGHTER LAMBS: Choice 40-50 lbs 105.00-114.00, couple 70 & 125 lbs 83.00 & 85.00.
SLAUGHTER SHEEP: one 52.00.
GOATS 15...(All sold by the head). Medium Billies 54.00-76.00, few Large Nannies 67.00-80.00, few Medium 50.00-52.00, Large Kids 24.00-45.00, few Small 21.00.

pick up the power

Are you ready for a STIHL?

Trimmers Starting at \$149.95

Chain Saws Starting at \$179.95

A powerful, lightweight saw for occasional use around the home that has many of the same design features as our professional models

TOOLS, NOT TOYS.

Available at these servicing dealers

Abbottstown MESSICK'S RD #1 Box 255A 717-259-6617	Hummels Wharf HUMMEL'S TEXACO Rt 11 & 15 570-743-7459	Ronks A & B SALES & SERVICE 370 Newport Road 2 Miles South of Rt 23 Along 772 Thru Monterey
Allentown LEHIGH AG EQ. INC. 3670 Ruppaville Rd. 610-398-2553 1-800-779-3616	Lititz/Lebanon BOMBERGER'S LAWN & GARDEN Lititz: 717-626-3301 Lebanon: 717-272-4155	Schaefferstown MARTIN'S EQUIPMENT CO. Rt 501 1 1/2 Miles South of Schaefferstown, PA 717-949-6817
Carlisle TRI-BORO CONSTRUCTION SUPPLIES 1490 RITNER HWY 1-800-248-6590	McAlisterville HOOBER, INC. 717-463-2191	Shippensburg CEDAR GROVE FARM STORE 1120 Ritner Hwy 717-532-7571
Dallastown TRI-BORO CONSTRUCTION SUPPLIES 435 Locust St. 717-246-3095 1-800-632-9018	Oxford DEER CREEK EQUIPMENT, INC. 6600 Limestone Rd. 610-932-8858	Waynesboro QUINCY HARDWARE Rt. 997 in Quincy 717-749-3653
East Earl GOODS LAWN & GARDEN CENTER Route 23 717-445-4490	Palmyra HERR'S REPAIR SHOP RD 2, Box 115A 717-838-1549	Hagerstown, MD EBY'S LAWN & GARDEN 16409 Fairview Road 301-733-4158
Elizabethtown MESSICK'S Rheems Exit-Rt. 283 717-367-1319, 717-653-8867	Palmyra WEAVER'S LAWN & GARDEN 740 W. Main St 717-838-5999	Cockeysville MD SUBURBAN SALES 10757 York Rd 410-785-2277
Ephrata WES STAUFFER ENGINES & EQUIPMENT 23 Pleasant Valley Rd 717-738-42150	Peach Bottom A.K. SAW SHOP 214 Peach Bottom Road	Whiteford MD DEER CREEK EQUIPMENT, INC. 720 Wheeler School Rd 301-879-5090
Gap GAP POWER EQUIPMENT Corner of Rt. 30 & Rt 897 717-442-8970	Pequea DREXEL AUTO SUPPLY 333 Steinman Farm Road 717-284-2916	Reamstown EAGLE RENTAL CENTER Rt. 272, Reamstown Traffic Light 717-336-3945

STIHL
www.stihlusa.com

DISTRIBUTED BY NORTHEAST STIHL