

Daily National Grain Market Summary

St. Joseph, MO
July 11, 2001

Report Supplied By USDA

Wheat bids were mixed, corn and soybean bids finished sharply higher. Prices continue to swerve for corn and soybeans following USDA's monthly report and concerns of drier weather were all factors today. Wheat bids closed mixed 7 cents lower to 3 cents higher. Corn 5 to 8 cents higher. Sorghum 15 cents higher and soybeans 3 to 8 cents higher.

Carryover strength from corn and soybeans prices supported wheat bids. Monthly supply and demand report was negative for wheat bids but no real big news to pressure bids lower. Corn prices continue to swerve after reports of hot and drier weather expected for the Corn belt areas. Soybean bids were sharply higher after USDA's report and weather concerns offered light support. Good overnight export sales and demand continue to improve limiting declines. EXPORT SALES: PURCHASER COMMODITY TONNAGE DELIVERY DATE CCC Malawi Hard Red Winter

2,000 July-Aug South Korea 11.5 pct protein HRW 5,200 Sep 14.0 pct protein DN Spring 4,600 White Wheat 12,100 Private Exporter Corn 165,000 Sep 01/02 crp yr Private Exporter Corn 120,000 Aug Taiwan Corn 20,000 Aug Soybeans 10,000

Totals: Wheat 23,900 tonnes. Corn 305,000 tonnes. Soybeans 10,000 tonnes
THESE MAY NOT BE THE ONLY EXPORT SALES THAT HAVE TRANSPIRED, BUT THEY ARE THE ONLY SALES THAT COULD BE CONFIRMED BY USDA GRAIN MARKET NEWS.

DATE CHANGE YEAR AGO TRUCK BIDS: 07/11/01 07/10/01 07/12/00 Wheat: Kansas City (HRW ORD) 2.93 up 2 2.65-2.67 Minneapolis (DNS 14pct) 3.50 ¼ dn 7 ½ 3.32 Portland (SWW) 3.30-3.32 up 3-unch 2.80-2.81 St. Louis (SRW) 2.62-2.63 up 3 2.23-2.24

Corn, US 2 Yellow: Kansas City 2.07 up 8 1.69-1.70 Minneapolis 1.91 ½ up 5 1.55 ¼ So. Iowa 2.03-2.04 ½ up 6 ½-7 ½ 1.64-1.69 Omaha 1.94-1.95 up 8 1.51-1.54 Soybeans, US 1 Yellow: Kansas City 5.25 up 8 4.90 Minneapolis 4.96 ½ up 3 ½ 4.66 ¼ So. Iowa 5.06-5.09 up 4-3 4.76-4.80 Cent. II Processor 5.20 ½-5.30

½ up 4 ½-7 ½ 4.85-4.97 ¼ Minneapolis truck wheat - to arrive 20 days

FUTURES: Kansas City (Sep) Wheat 3.07 ½ up 1 ½ 2.93 ¼ Minneapolis (Sep) Wheat 3.23 ¼ dn 2 ½ 3.12 Chicago (Sep) Wheat 2.72 ¼ up 1 ¼ 2.52 ½ Chicago (Sep) Corn 2.24 ½ up 8 1.85 ¼ Chicago (Aug) Soybeans 5.10 ½ up 7 ½ 4.72 ¼

EXPORT BIDS: Barge or rail, Port of New Orleans or North Texas Gulf.

Bids per bushel except sorghum per cwt.

US 1 HRW Wheat, Ord Protein: 3.27 ½-3.42 ½ - 3.04 ½-3.05 ½ US 2 Soft Red Winter Wheat: 2.86 ¾ up 7 ¾-4 ¾ 2.46 ½ US 2 Yellow Corn: 2.34 ½-2.35 ½ up 7-8 1.96 ¼-1.97 ¾ US 2 Yellow Sorghum: Rail 4.38-4.49 - - 3.17-3.24 Barge 4.35-4.40 up 36 3.62-3.63 US 1 Yellow Soybeans: 5.43 ½-5.44 ½ up 4 ½-5 ½ 5.12 ¼-5.13 ¼

Pa. Grain

July 9, 2001

Report Supplied By PDA

COMPARED WITH LAST MONDAY'S MARKET FOR EASTERN AND CENTRAL PENNSYLVANIA: CORN MOSTLY .03 TO .05 HIGHER, WHEAT .05 WITH SPOTS UP TO .10 HIGHER, BARLEY AND OATS FIRM, SOYBEANS STEADY TO .05 HIGHER,

EAR CORN MOSTLY 1.00 TO 2.00 HIGHER PER TON. PRICES PAID DELIVERED TO DEALERS DOCK, ALL PRICES PER BUSHEL, EXCEPT EAR CORN PER TON.

SOUTHEASTERN PENNSYLVANIA CORN NO. 2-Y RANGE 2.05-2.35, AVERAGE 2.23, CONTRACT FOR HARVEST 2.15-2.32; WHEAT NO. 2 RANGE 2.50-2.59, AVERAGE 2.53, BARLEY NO. 3 RANGE 1.25-1.45, AVERAGE 1.34; OATS NO. 2 RANGE 1.45-1.60, AVERAGE 1.58, SOYBEANS RANGE 4.52-4.85; AVERAGE 4.58, CONTRACT FOR HARVEST 4.48-4.53; EAR CORN RANGE 60.00-75.00, AVERAGE 65.57.

SOUTH CENTRAL PENNSYLVANIA

CORN NO. 2-Y RANGE 2.05-2.20, AVERAGE 2.13; WHEAT NO. 2 RANGE 2.0-2.50, AVERAGE 2.29; BARLEY NO. 3 RANGE 1.20-1.40, AVERAGE 1.29; OATS NO. 2 RANGE 1.05-1.30, AVERAGE 1.21; SOYBEANS NO. 1 RANGE 4.23-4.40, AVERAGE 4.35; EAR CORN RANGE 54.00-66.00, AVERAGE 58.90.

EASTERN AND CENTRAL PENNSYLVANIA SUMMARY

CORN NO. 2-Y RANGE 2.05-2.35, AVERAGE 2.20; WHEAT NO. 2 RANGE 2.00-2.59, AVERAGE 2.37; BARLEY NO. 3 RANGE 1.20-1.45, AVERAGE 1.33; OATS NO. 2 RANGE 1.20-1.60, AVERAGE 1.39; SOYBEANS NO. 1 4.10-4.60, AVERAGE 4.40; EAR CORN RANGE 54.00-70.00, AVERAGE 63.02.

WESTERN PENNSYLVANIA

CORN NO. 2 RANGE 1.90-2.40, AVERAGE 2.23; WHEAT NO. 2 RANGE 2.33-2.40, AVERAGE 2.36; BARLEY NO. 3 RANGE 1.32, AVERAGE 1.32; OATS NO. 2 RANGE 1.20-1.50, AVERAGE 1.40; SOYBEANS NO. 1 RANGE 3.96, AVERAGE 3.96; EAR CORN RANGE 50.00-61.00, AVERAGE 55.50.

CENTRAL PENNSYLVANIA

CORN NO. 2-Y RANGE 2.15-2.31, AVERAGE 2.23; WHEAT NO. 2 RANGE 2.00-2.40, AVERAGE 2.17;

BARLEY NO. 3 RANGE 1.25-1.45, AVERAGE 1.35; OATS NO. 2 RANGE 1.38-1.40, AVERAGE 1.39; SOYBEANS RANGE 4.00-4.60, AVERAGE 4.30; EAR CORN RANGE 60.00-61.25, AVERAGE 60.63.

LEHIGH VALLEY AREA

CORN NO. 2-Y RANGE 2.15-2.27, AVERAGE 2.23; WHEAT NO. 2 RANGE 2.45-2.59, AVERAGE 2.51; BARLEY NO. 3 RANGE 1.25-1.45, AVERAGE 1.35; OATS NO. 2 RANGE 1.20-1.75, AVERAGE 1.41; SOYBEANS NO. 1 RANGE 4.40, AVERAGE 4.40; PER HUNDREDWEIGHT, FEW REPORTED GR. SORGHUM RANGE 2.18-2.25, AVERAGE 2.21; EAR CORN RANGE 64.00-70.00, AVERAGE 67.00.

MONTH AGO

CORN NO. 2-Y 2.20; WHEAT NO. 2 2.41; BARLEY NO. 3 1.41; OATS NO. 2 1.41; SOYBEANS NO. 1 4.25; EAR CORN 60.82.

YEAR AGO

CORN NO. 2-Y 2.29; WHEAT NO. 2 2.14; BARLEY NO. 3 1.37; OATS NO. 2 1.43; SOYBEANS NO. 1 4.44; EAR CORN 73.14.

NORTH CENTRAL OHIO

(Prices FOB Truck)

CORN 1.85-1.98; WHEAT 2.26-2.43; OATS 1.25; SOYBEAN MEAL BULK 44% 174.90-180.00; BULK 48% 184.90-189.00.

New Holland Dairy

New Holland Sales Stables Report Supplied by Auction Wednesday, July 11, 2001

177 DAIRY COWS, 175 HEIFERS, 14 BULLS. MARKET STEADY.

LOCAL FRESH COWS 685.00-1425.00, FEW 1675.00-1900.00.

LOCAL SPRINGERS 760.00-1775.00.

BETTER FRESH COWS 1810.00-2050.00.

LARGE HEIFERS 1500.00-1775.00, 6 HEAD 1810.00-1885.00, SMALL HEIFERS 650.00-1350.00.

SHORTBRED HEIFERS 1000.00-1450.00.

OPEN BREEDING AGE HEIFERS 1135.00-1275.00.

BULLS 310.00-875.00, PUREBREDS 585.00-1025.00.

UPSTATE LOADS FRESH 850.00-2050.00.

FRESH HEIFERS 725.00-1575.00, 1 AT 1925.00.

REGISTERED HEIFERS 1000.00-2225.00.

SMALL OPEN HEIFERS 810.00-1050.00, SMALLER 185.00-410.00.

Eastern Cornbelt Direct Feeder Pig Weekly

Springfield, Ill.

July 6, 2001

Report Supplied By USDA

FEEDER PIGS: Eastern Cornbelt Feeder Pig Weekly: Receipts this week 15,885; last week 14,214. SEW 10 lb pigs were 1.00 to 2.00 higher firm and feeder pigs were trading mixed. Demand was moderate with light to moderate offerings.

FOB Eastern Cornbelt—Illinois, Indiana, Ohio, Michigan—Receipts this week 8,212; last week 8,144. Prices follow for estimated 50-54% lean value pigs by lot size, head count, prices per head with weighted average prices in parentheses where applicable.

EARLY WEANED PIGS, 10 lb BASIS: Under 250 lb: 125 head, 34.04; 250-750: 3,402 head, 27.19-37.18 (31.12); 750/up: 2,200 head, 31.75-37.18 (31.60). Total Composite: 5,727 head, 27.19-37.18 (31.60).

FEEDER PIGS: 40 LB BASIS: 250-750 lb: 625 head 50.50.

FEEDER PIGS: 50 LB BASIS: 250-750 lb 1,860 head 41.04-48.00 (43.04).

LEESPORT FARMERS MARKET
LEESPORT, BERKS COUNTY, PA 19533 (610) 926-1307
LIVESTOCK AUCTION
EVERY WEDNESDAY - 1:00 P.M.



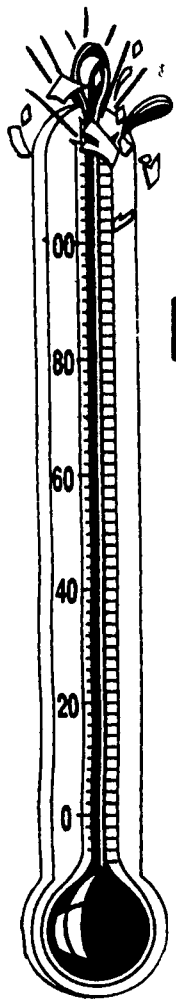
Farmers Market 9:00 AM to 8:00 PM
Flea Market 7:00 AM to ??
visit our website: www.leesportmarket.com

HAY, STRAW & GRAIN SALES



Hay And Straw Sales Will Start At 10 A.M. Every Wed.

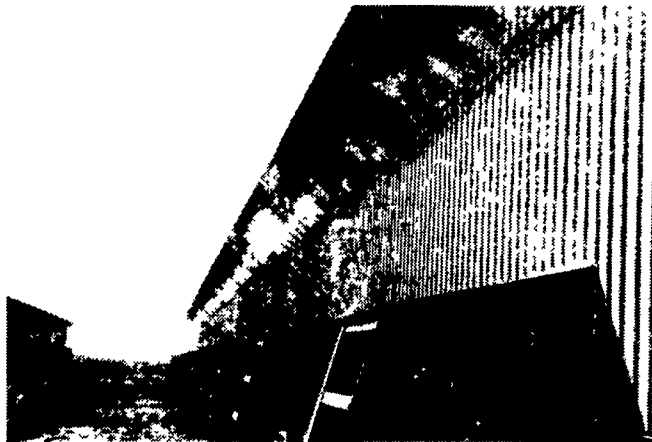
WOLGEMUTH'S AUCTION
formerly Good's Auction
109 North Maple Ave.
Leola, PA 17540
717-656-2947



WHEN IT'S HOT

BEAT THE HEAT WITH . . .

VAL WATERING SYSTEMS / **POLAIR** HIGH PRESSURE FOG/COOLING SYSTEM



All stainless steel pipes and nozzles are located to spray 1000-psi mist into inlet air stream for evaporative cooling (up to 10-degree lower temperature) lines are sloped for complete drainage during off cycles and winter months.



High pressure pump is controlled by temperature and humidity levels. Water is filtered and injected to prevent calcium build ups in lines and nozzles.

FOR MORE INFORMATION AND FREE ESTIMATES CALL:

HERSHEY
EQUIPMENT CO., INC.

255 PLANE TREE DRIVE, LANCASTER, PA 17603

1-800-432-0988 • (717) 393-5807
FAX (717) 291-1534

"YOUR PARTNER IN AGRI-BUSINESS"