

95.00 (93.31); 800-850 lbs (829 lbs) 87.25-92.75 (89.90); 850-900 lbs (882 lbs) 84.75-88.50 (86.84); 900-950 lbs (907 lbs) 83.75-86.25 (85.01); 950-1000 lbs (987 lbs) 80.00-83.50 (82.28). **HOLSTEINS:** Few Large 3 500-600 lbs 73.25-74.00; 700 lbs 71.00.

FEEDER HEIFERS: Medium and Large 1: few 300-400 lbs (350 lbs) 104.50-111.50 (108.03); 400-500 lbs (450 lbs) 103.50-111.75 (108.65); 500-600 lbs (550 lbs) 92.50-99.50 (95.14); 600-700 lbs (650

lbs) 89.00- 96.25, fleshy 84.00-92.75 (90.68); 700-725 lbs (713 lbs) 88.75-92.75 (91.15); 750-800 lbs (753 lbs) 86.50-88.00 (87.56); 800-850 lbs (822 lb) 82.75-87.50 (85.70).

Friend's Stockyard, Inc.

Accident, Md.
Report Supplied by Auction
Monday, July 9, 2001
STOCK STEERS AND BULLS 200-500 LBS. 65.00-98.00.

STOCK HEIFERS 200-500 LBS. 65.00-94.00.

SLAUGHTER STEERS GOOD TO CHOICE 75.00-78.00, MEDIUM TO GOOD 68.00-74.00, HEAVY CHOICE OVER 1450 LBS. 68.00-78.50.

HOLSTEIN STEERS HEAVY CHOICE 61.00-67.50, LIGHT 58.00-71.00.

SLAUGHTER HEIFERS GOOD TO CHOICE 75.00-78.00, MEDIUM TO GOOD 55.00-77.00.

BULLS HEAVY 57.00-64.00, LIGHT 55.00-66.00.

COWS UTILITY (HOLSTEINS) 49.50-49.75, COMMERCIAL TO GOOD 38.00-44.50, CULL COWS 37.00 AND DOWN.

VEALS GOOD TO CHOICE 50.00-121.00, MED. TO GOOD 50.00-67.00.

BOB CALVES 50.00 AND DOWN.

HOLSTEIN BULL CALVES RETURN TO FARM 90-120 LBS. UP

TO 175.00; HOLSTEIN HEIFER CALVES RETURN TO FARM 90-120 LBS. UP TO 460.00; BEEF CROSS CALVES RETURN TO FARM UP TO 230.00.

HOGS, TOP QUALITY, UP TO 53.00.

SOWS UP TO 40.00.


LAMBS, CHOICE, UP TO 80.00.

LIVESTOCK PRICES ARE ALL GIVEN PER HUNDRED WEIGHTS.

Heifer Service

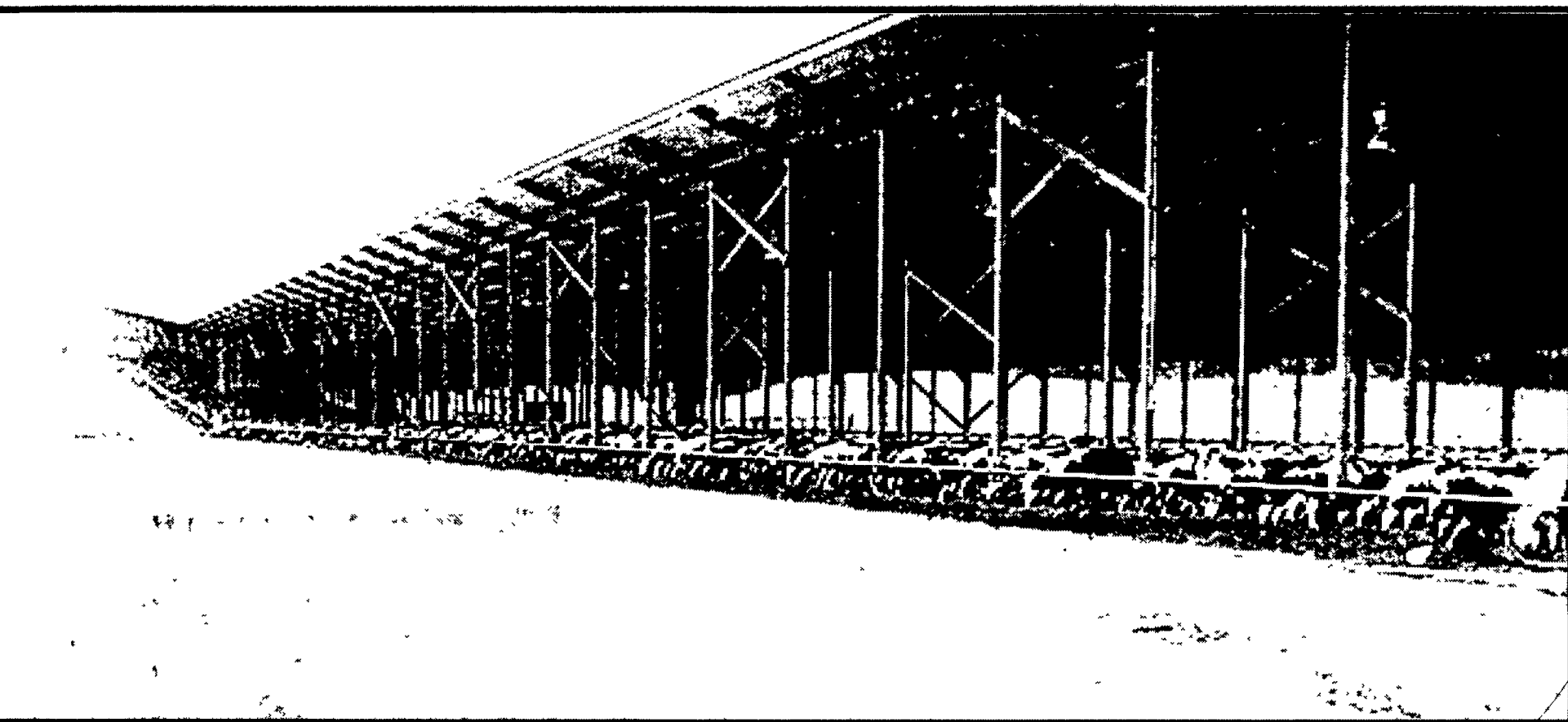
fer Facility

a.m. - 2:30 p.m.



Facility includes:


- (6) 192' wet barns each housing 46 calves
- (2) 192' weaning barns each housing 120 calves
- (5) freestall barns with flush, measuring 708', 918', 900', 768', 730' - 3084 total freestalls



DIRECTIONS:

South on I-81: Exit at Exit 10 and turn right at the stop sign. Go to the 2nd which is route 11 and turn left on 11 South (or King St.). Go thru 5 lights, lock past 5th light, turn right onto Spring St. Follow Spring St. (which Roxbury Rd.) 6 miles to a small village called Mongul. Mongul is on a hill, bottom of the hill (after crossing a small bridge); turn right onto Mongul mile to stop sign and turn right. We are the second farm on the left. At NOT turn right onto Mongul Hill Rd. - go past it about 1/2 mile.

From PA Turnpike: Get off at Exit 15 (Blue Mountain Exit). Go south to Rt. 997. Take Rt. 997 South one (1) mile to the second road on the left, which is Otterbein Church Rd. Go two (2) miles to the stop sign; turn east on Rt. 641, and immediately right on Paxton-Run/Otterbein Church Rd. Go 1.7 miles to the stop sign. Turn left on McClays Mill Rd. Go half a mile and bear right on Mongul Rd. (Portions of McClays Mill Rd. & Mongul Rd. are dirt roads). Go half a mile to the first road left, which is Dream Hwy. Facility is a half a mile on the left.



Westmoreland, NY 13490
3936
Commercial Dairyman

Since 1946
Eichelbergers, Inc.

107 Texaco Road, Mechanicsburg, PA 17055
717-766-4800 800-360-0660 FAX 717-691-6068

A Multifaceted
Ground Water
Resources Company
www.eichelbergers.com

David H. Martin Excavating Inc.

Residential Development, Commercial Site & Utility Construction
Septic Systems - Topsoil - Slate - Fill Blasting - Snow Removal

4961 Cumberland Hwy
Chambersburg, PA 17201
Ph. (717) 264-2168
Fax. (717) 264-6011

Kervin Ogburn
Estimator
Email:
kervino@hotmail.com

- **Chambersburg Farm Service (Woodchuck Dealer)**
717-264-3533
- **E & F Ag Systems**
Ronks, PA 717-392-6809
- **Intervet Animal Health**
John McFadden 717-898-4602
Bill Allen 717-770-0417

- **Land O'Lakes Animal Milk Product Co.**
Carlisle, PA
800-645-6455
- **Agway Energy Products**
Carlisle, PA
888-249-2924
- **Agway Feed & Nutrition**
Newburg, PA
717-530-7778

- **Genex Cooperative Inc.**
800-424-3639
Service Technicians:
Eldon Lehman
& Kurt Auchenbach

