

1A CONSTRUCTION EQUIPMENT

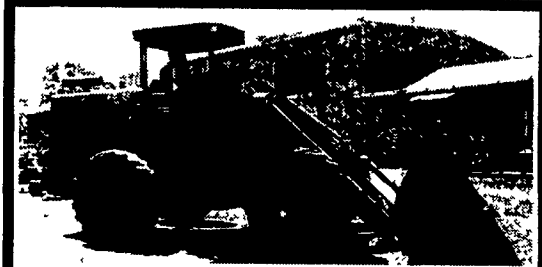
Clark 5000 lb forklift, triple mast, side shift, LP, good cond., \$3600. 717-733-0575

CAT 955L Track Loader, ROPS, Good condition, \$19,500. 570-676-3384.

PAVERS - New & used, mostly mauldins, very reasonable prices. 610-586-2710.

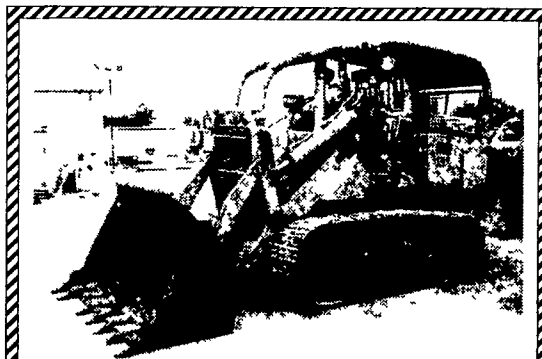


BOMAG K-300 Compactors,
V-8 Cat Diesel Clark 3-speed power-shift tranny, Clark axles 9' hydraulic blade, government surplus, low hours
\$35,000 904-362-2016



John Deere JD444C 4x4 Loader
** Weak Transmission ** **\$9,000**

Heavy Equipment Loader Parts, Inc.
10070 Allentown Blvd Grantville, PA 17028
No Sunday Calls (717) 469-0039



Case 1150 Crawler Loader Runs great. \$7,000.00 Heavy Equipment Loader Parts Rt. 22 Grantville, PA (717)469-0039



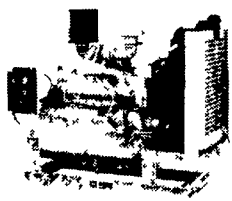
Cat 941/951 CRL Loader
5 Crawler Loaders To Choose From
Fiat/Cat/Komatsu - Sale Or Rent

Heavy Equipment Loader Parts, Inc.
10070 Allentown Blvd Grantville, PA 17028
No Sunday Calls (717) 469-0039

Diesel Engine Service

13 Pleasant Valley Road • Ephrata, PA 17522
PHONE: 717-733-3890 • FAX: 717-738-3146

JOHN DEERE & DETROIT DIESEL



• Engines • Power Units • Generator Sets • Complete Rebuilding • Parts & Service • Rockford & Twin Disc Clutches & Parts • **New JD Powertech Engines 20-500 HP**

HATZ • 20-70 HP Air Cooled Diesel **SilentPAK** Series Engines

- 75 HP 353 DD Power Unit or Engine **Call**
- 75 HP 4219D John Deere Power Unit **\$5,500**
- 170 HP 6414T John Deere Engine or Power Unit **Call**
- 220 HP 671N Detroit Diesel, Power Unit, Used **\$3,800**
- 230 HP 6076A John Deere, Power Unit, Like New **\$12,500**
- 110 KW Detroit Diesel, Gen Set **\$12,000**
- 50 KW Detroit Diesel, Gen Set **\$6,500**

Rubber tire loader, M.F.runs & operates, ex, 1 yd bkt \$6,000. 814-669-4621, 814-669-9584

Case 1835B, Backhoe attach. exc. cond. \$3,800. 301-371-9346.

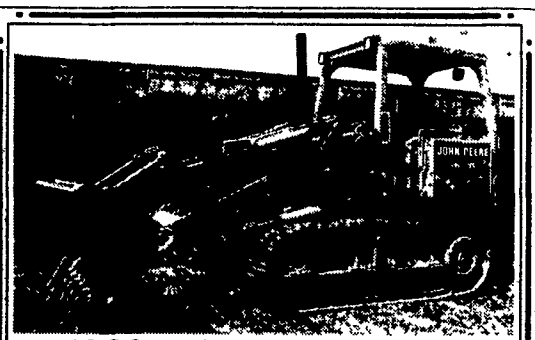
Bobcat 643, Diesel eng, encl cab, heat, \$6,300. 301-371-9346

Koehring excavator C-366 Bantam w/ Detroit 453 dsl engine, \$8500 OBO. 570-648-1239

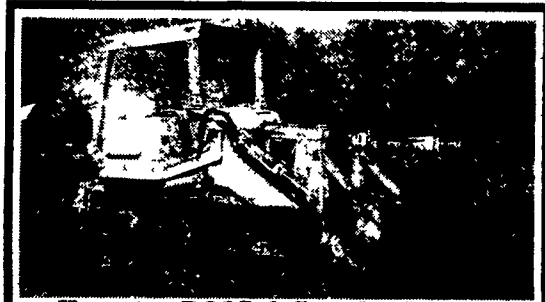
1990 JD 550G dozer w/ Bron cable plow w/many attachments, \$32,000; 1984 Ford L-8000 single axle dumptruck, \$10,000; 1956 Ford 841 farm tractor w/loader, 3 hitch, ps, pto, 2 bottom plow, scraper blade, \$7,000; 1988 Eager Beaver 20 ton trailer \$8,000. OBO for each. All In Fulton Co. Dan 215-696-0465.



Lull 844 Shooting Boom Forklift For Sale or Rent
\$22,500
717-336-3336



1989 John Deere 455G
500 Hrs. on New Engine, New Tracks and New Rollers; 20 Hrs. on New Sprockets, New Gaskets in The Hydraulics Cylinders and The Hydraulic Valve. New Paint.
\$24,000 OBO
717-656-4739



Komatsu D66S-1 Crawler Loader
\$20,000

Heavy Equipment Loader Parts, Inc.
10070 Allentown Blvd, Grantville, PA 17028
No Sunday Calls (717) 469-0039

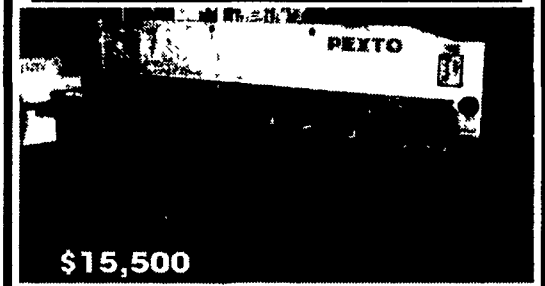
- Cat 426B Backhoe, 1995, Cab, X-Hoe, 4x4, 2705 Hr., Very Tight Machine \$27,900
- Ingersol/Rand FX130 Trench Roller, 33", New Paint, Remote Control. \$7,500
- Sakai SV500D VIB, Compactor 84" Smooth, 3,382 Hr., 1994.. . . . \$33,500
- Cat 312 Excavator, Good Paint, Excellent, 1993 \$37,500
- Choice of 2 Tramac BRH400s Ram Hammer, Just Rebuilt.. . . . \$9,800
- JD 310E Backhoe, 1998, 4X4, Cab, 1,759 Hrs., Aux. Hyd., Reg. Stick \$38,900
- JD 310D Backhoe, 1995, Cab, Heat, Aux. Hyd., Reg. Stick, 3,595 Hrs \$24,900
- Wain-Roy Q-Tach for JD 310D & E Backhoe, 24" Bucket Included \$375
- Ingersol-Rand FX130 Trench Roller, Manual Controls, 33" \$6,900
- Case 75XT Skid Loader, 2000, 179 Hrs, Aux Hyd. \$19,900

STONEY CREEK
CONTRACTOR SERVICES
EQUIPMENT RENTALS

415 Park Road FLEETWOOD, PA 19522 FAX 610/944-1562

610/944-5332 Cell 610/914-3161 TOLL FREE 877/944-1562

SHEARS FOR SALE



\$15,500
Pexto Hydraulic Shears, 10 ga. X 10 ft. Excellent
36" FOPBG, 3 Ft. Squaring Arm.
Lancaster 717-653-2239

- #7786 Case 580L Loader Backhoe, 1998, 4WD, Cab, Ex, 1274 Hrs. \$43,900
- #7768 Case 1845C Uniloader, 1999, Aux. Hyd., Drt. Bkt, New Tires, 2,000 Hrs. \$15,900
- #7668 Gradall G660 Excavator, 22,000 Miles, 422 Hrs, 36" & 60" Buckets. \$17,900
- #7699 Case 580K Loader Backhoe, 1987, 2WD, Can, Ext \$17,500
- #7822 Case 580C Loader Backhoe, 1977, 2WD, Can, Std, Very Good Cond., 6300 Hrs. . \$10,900
- #7726 Case 780D Loader Backhoe, 1990, 2WD, Can, Ex, 4-N-1 Bkt. \$18,900
- #7723 Case 1845C Uniloader, 1986, Aux. Hyd, Drt Bkt, 2740 Hrs. \$13,900
- #7729 Case 580SL Loader Backhoe, 1995, 4WD, Cab, A/C, Stereo, Deluxe Int, Ex 3320 Hrs. \$36,900
- #7522 Case 580SL Loader Backhoe, 1997, 4WD, Cab w/AC, Ex, 1500 Hrs \$44,900
- #7519 Case 580SL Loader Backhoe, 1997, 4WD, Cab, Ex, 2332 Hrs \$43,900
- #7491 Case 1840 Uniloader, 1998, Aux Hyd., Drt Bkt, 1212 Hrs \$14,500
- #7365 Case 1840 Uniloader, 1991, Aux Hyd, Drt Bkt, 3000 Hrs \$10,900
- #7517 Case 580K Loader Backhoe, 1987, 2WD, Can, Ex, 4661 Hrs \$16,900
- #7516 Case 580K Loader Backhoe, 1989, 2WD, Cab, Ex., 5917 Hrs \$19,900
- #7364 Case 95XT Uniloader, 1997, Cab w/Heat, Hyd Coupler, 82" Bucket, 1550 Hrs. . . \$27,900
- #7362 JD 410 Loader Backhoe, 1978, 2WD, Canopy, Standard, 3100 Hrs \$12,900
- #7870 Case 570LXT Tractor/Loader, 1996, 4WD, Canopy, 3 Point Hitch, Filled Tires, 500 Hrs \$24,900
- #7871 Case 580L Loader Backhoe, 1998, 4WD, Cab, Ex, 500 Hrs \$43,500

Vernon E. Stup Co.
5859 Urbana Pike, Frederick, MD 21701
301-663-3185

100% Financing w/Good Credit at 9% Int. in PA

1994 217 JCB 4x4, cab & ext. hoe, 36 & 24 in bucket, 3400 hr. \$26,500

1986 Cat 953, Good bottom, LGP, with Root Rake. \$37,000

Case 1150 Crawler Loader, 2900 Original hr. \$16,500

Cat 966D Wheel Loader, Nice, Good Rubber, New Paint \$41,000
1988 Komatsu WA120, New Paint, Good Rubber \$26,000

Cat E120 Hydraulic Ex. 1989 New Paint, Nice. \$24,000

95 JD 455G, 2200 Hrs., Extra Clean. \$31,500

Gehl 5625 Skid Loader. \$5,900
1989 JD 510C 4x4, Cab, Ext. hoe, 3700 hr. \$24,500
1987 Case 780C TLB 4x4, Cab, Cummins Diesel with turbo. \$17,500

89 JD 644E, Radial Tires, New Paint. Call

1989 Ford **SOLD hoe w/Cab, Nice. \$16,500**
Cat 953 w/Cab, Good Engine & Bottom, Lots of Rust. \$26,000
312 Hydraulic Excavator \$33,000

CRAWLER LOADER
95 JD 455G Crawler Loader, 2200 Hrs., New Paint. \$32,500
WHEEL LOADERS
Volvo Michigan L190, 6 yd Bucket. \$34,000

AA Equipment
717/529-2512
No Sunday Calls
1797 Robert Fulton Hwy., Quarryville, PA 17566
• We Buy & Sell • Financing Available