

## USED TRAILERS

**JIM MARINO**  
USED TRAILER MANAGER  
717-492-1806



### Great Dane Trailers

1831 AUCTION ROAD  
MANHEIM, PA 17545  
www.lancaster@greatdaneTrailers.com

## MOTORS

New & Rebuilt  
350, 366, 427, 454

6.2 Diesels

Rebuilt & Used

Will Install

**717-762-6415**



**18' Morgan Body With Thermoking Reefer,**  
**Rollup Rear Door \$2,800**  
**- 717/354-4966 -**

## Equipment Clean-Up Sale

### NEW EQUIPMENT

- Heil 9'x7'x26"x32" Body & Hoist . . . \$2,600
- Heil 8' Body w/Fold-down Sides & Hoist \$1,500
- 8'x96" Platform Body w/Bulkhead & Western style rear - long longills . . . \$800
- 14'x96" H D Platform Body w/Treadplate Floor & Bulkhead . . . \$1,500
- 10'x96" H.D Platform Body w/Wood Floor w/48" Bulkhead Slier Track & Winches . . . \$1,450
- 8'x96" H D Platform Body w/42" Bulkhead . . . \$1,250
- New Chevrolet take-off pickup bed . . . \$900

**Many Other New Bodies In Stock!**

### USED EQUIPMENT

- 10' Steel Dump Body with Hoist . . . \$550
- 10' Steel Dump Body without Hoist . . . \$450
- 12' Steel Dump Body w/25" Sides, 38" Gate w/Hoist - Good Shape . . . \$1,475
- 16'x96" Platform body . . . \$500
- Swenson Berming Machine - needs work \$550
- 10' H D. Plow w/Hitch & Power Unit \$1,875
- Western "V" Plow - 8-1/2' - Good Condition (Fits '96 Ford F350) . . . \$2,250
- Used Slip-In Spreader - 7-1/2' . . . \$850

**Complete Inventory of Dump Bodies, Stake Bodies, Tool Boxes, Fisher & Meyer Snowplows**

**E.M. KUTZ, INC.**  
Whitehall, PA Reading, PA  
**1-800-974-9779**

# BRUBAKER'S AUTO SALES

PH. 717-866-5237

Hours: Mon.-Fri. 8 a.m. - 9 p.m.; Sat. 8 a.m. - 6 p.m.

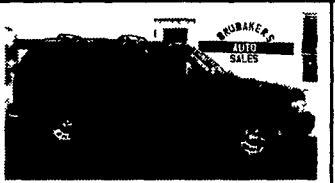
ROUTE 422  
MYERSTOWN, PA



**99 FORD RANGER XLT, 4x4, Ext Cab, Blue, 3.0, V6, AT, AM/FM/Cass., AC, PW, PL, 42,790 Mi \$14,900**



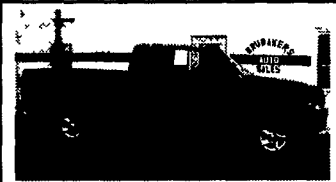
**99 FORD WINDSTAR LX, Blue, 3.8, V6, AT, AM/FM/Cass., PW, PL, CC, Tilt, Dual AC, Keyless Entry, 66,665 Mi \$12,900**



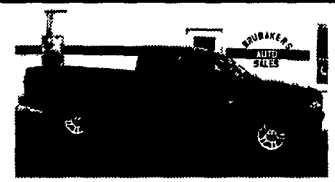
**99 FORD EXPLORER XLS, 4x4, Blue, V6, AT, AC, PW, PL, CC, Tilt, AM/FM/Cass/CD, 27,675 Mi \$15,900**



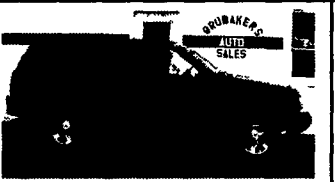
**98 CHRYSLER TOWN & COUNTRY LX Dark Gray, 3.8, V6, AT, AM/FM/Cass, PW, PL, CC, Dual AC, Trac-Control, CD, Pwr-Seat, Child Seats, Keyless, 34,590 Mi \$16,900**



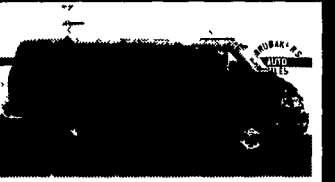
**98 DODGE RAM 1500 SPORT 4x4, Quad Cab, Green, 318 V8, AT, AC, PW, PL, CC, Tilt, AM/FM/Cass/CD, Pwr Seat, Keyless Entry, 61,475 Mi \$17,600**



**98 DODGE DAKOTA SPORT 4x4, Ext Cab, Purple, V6, 5 Spd., AM/FM/Cass, AC, CC, Tilt, 67,725 Mi \$13,900**



**98 JEEP GRAND CHEROKEE LAREDO, 4x4, Green, 6 Cyl., AT, AM/FM/Cass, AC, PW, PL, CC, Tilt, Keyless Entry, 45,260 Mi \$13,900**



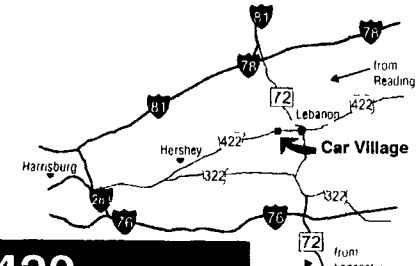
**00 DODGE RAM 3500, 15 Pass, Green, 360 V8, AT, PW, PL, CC, Tilt, Dual AC, AM/FM/Cass/CD, Keyless Entry, 26,800 Mi \$18,900**

**Business Hours:**  
Mon.-Fri. 9 to 9;  
Sat. 9-4

2300 W. CUMBERLAND ST.  
(Rt. 422)  
LEBANON, PA 17042  
(Across From Lebanon Valley Mall)

# CAR VILLAGE

HEAVY DUTY TRUCKS



PHONE 717-274-2000 Toll Free 1-800-650-1420



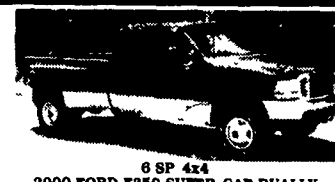
**4 DOOR STAKE BODY 96 CHEVY K3500**  
Great Tk For The Work Crew, 8 Foot Body, Ladder Racks, Removable Sides, High Output, 6.5 Turbo Diesel, AT, A/C, Only 59,000 Miles



**550 CREW CAB CHASSIS 4 WHEEL DRIVE 1999 FORD**  
Very Rare Find, XLT Powerstroke, Auto, 17,500 GVW, Trailer Tow Mirrors, New Truck Warranty



**MECHANIC'S SPECIAL • 95 FORD F350 4X4**  
1 Ton Pickup, Solid Front Axle, Powerstroke Turbo Diesel, 5 spd., A/C, Lock-Out Hubs, Dual Tank, 1 Owner Trade, Asking \$12,900



**2000 FORD F350 SUPER CAB DUALLY**  
Opening Rear Doors, Strong Powerstroke Turbo Diesel, 6 Sp., A/C, Capt Chairs, Console, Loaded, XLT, Limited Slip Axle, Tow Pkg., New Tk Warranty



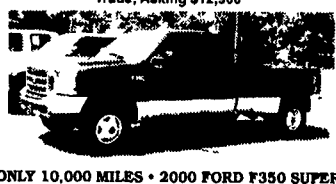
**1 TON DIESEL - 99 FORD F350 4x4**  
Powerstroke Turbo Diesel, 6 Sp Trans., Trailer Tow Pkg 3.73 Limited Slip Axle, Heavy 9,900 GVW, Alum Wheels, Ready To Go



**REAR LIFT GATE 2000 FORD E350 CUBE VAN**  
Like New, Only 12,000 Miles, Powerstroke Diesel, AT, A/C, 11 Ft. Body, Roll Up Rear Door, New Tk Warranty



**ENCLOSED UTILITY 99 FORD 450 SUPER DUTY MECHANICS BODY**  
Like New, 11 ft Reading Enclosed Body, Powerstroke Diesel, AT, AC, only 25,000 Miles



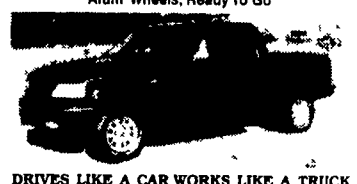
**ONLY 10,000 MILES • 2000 FORD F350 SUPER CAB DUALLY 4 WHEEL DRIVE**  
Like New, IT's Perfect Powerstroke Diesel, AT, XLT Lariat Pkg., Full Power, All Options, Tow Pkg., Aluminum Wheels



### 2000 DODGE 2500 SL QUAD CAB

Like New, Only 27,000 Miles, Remaining New Truck Warranty, 24 Valve Cummins Turbo Diesel, 5 Sp, A/C, Front & Rear Dana Axles, Limited Slip Axle, Tilt, Cruise, Tow Pkg, Nice Truck! Great Price!

**Priced Right \$26,900**



**DRIVES LIKE A CAR WORKS LIKE A TRUCK 2001 FORD F150 SUPER CREW XLT**  
Only 6,000 Miles, Remaining New Tk Warranty, Loaded XLT, V8, Auto, Alloy Wheels, Sliding Rear Window & Much More. Come See & Drive!



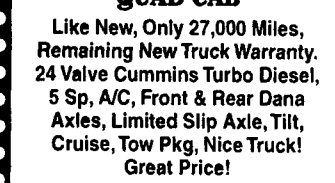
**MECHANICS BODY, 97 FORD F350**  
The Nicest Around Only 36,000 Miles, Gas, V8, 11 Ft. Body, Ladder Racks, Tow Pkg



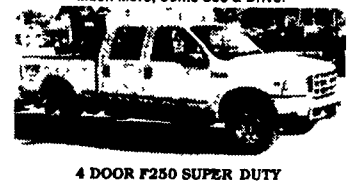
**FLATBED DUMP 97 FORD F350**  
Very Clean, Only 50,000 Miles, 351 Fuel Inj., V8, AT, 9 Ft. Steel Body



**SHORTBED SUPERCAB 99 FORD F250 4X4**  
A Real Good Lookin' Truck, Powerstroke, Turbo Diesel, 6 sp, AC, Loaded, XLT, Power Driver Seat, Aluminum Wheels & More



**BEAUTIFUL 99 GMC K3500 4 DOOR**  
4WD, Only 13,000 Miles, All Remaining Fact Warranty, High Output, 6.5 Turbo Diesel, 5 Spd., Capt Chairs, Console, Loaded, All Options



**4 DOOR F250 SUPER DUTY 99 FORD 4x4**  
Triton 5.4 V8, AT, A/C, Loaded XLT, Factory Step Boards, Tow Pkg, Aluminum Wheels, Only 26,000 Miles



**12 FT. FLATBED 98 DODGE 3500**  
Nice, Clean, Only 30,000 Miles, 24 Valve Cummins, Turbo Diesel, 5 Spd., A/C, 4.10 Gear, Tow Pkg



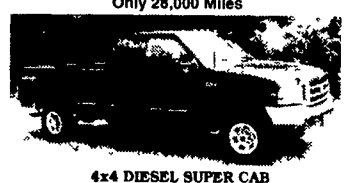
**4X4 FLATBED 95 FORD F350**  
Strong & good looking, powerstroke turbo diesel, AT, Vinyl Seat & Floor, Limited Slip Axle, 8 Ft Body, Removable Sides



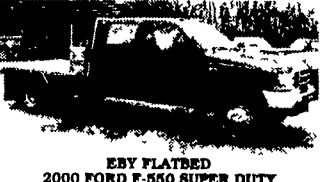
**\$21,900 97 DODGE 2500 CLUB CAB 4x4**  
Cummins Turbo Diesel, AT, A/C, Laramie SLT Pkg., Fact Tow Pkg, Class 4 Hitch, Chrome Wheels, New Service & Insp., Ready & Waiting For You



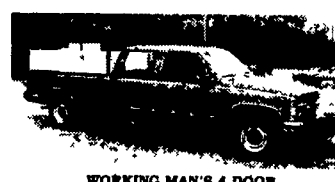
**\$19,900 97 DODGE 2500 4X4**  
Good Looks & Great Truck Cummins Turbo Diesel! AT AC, Limited Slip Axle Tow Pkg Aluminum Wheels



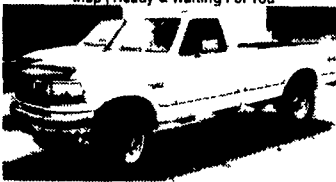
**4x4 DIESEL SUPERCAB 99 FORD F250 XLT LARIAT**  
Nice Loaded, All Options, Powerstroke Diesel AT A/C, Capt Chairs Console, Aluminum Wheels Tow Pkg, Remaining New Tk Warranty



**EBY FLATBED 2000 FORD F-550 SUPER DUTY**  
Great Hauling Machine, Only 6,900 Miles, Powerstroke Diesel, AT, A/C, Capt Chairs, Console, 6-Way Power Driver Seat, Gooseneck Ball, heavy 17,500 GVW



**WORKING MAN'S 4 DOOR 94 CHEVY C-3500**  
4 Door, Local 1 Owner Trade, Only 60,000 Miles, 350, V8, Auto, Vinyl Seat & Floors



**\$13,900 93 FORD F250 4X4**  
Heavy Duty 3/4 Ton Nice Local Trade, 7.3 Diesel AT, AC, Lock Out Hubs, Dual Tanks, Runs, Looks Great



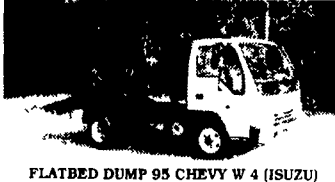
**6 SPD POWERSTROKE 99 FORD F250 QUAD CAB**  
4 Wheel Drive Farm Style, Vinyl Seat & Floor Tow Pkg Strong Powerstroke Diesel A/C



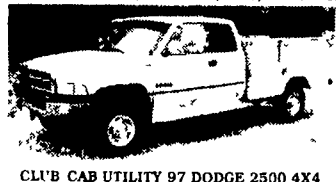
**5 SPEED CREW CAB • 95 FORD F350 DUALLY**  
This is One Awesome Towing Machine, Powerstroke Diesel With Banks, Power Pak - 5 Spd 4.10 Gear Gooseneck Hitch Only 41,000 Miles, Aluminum Wheels



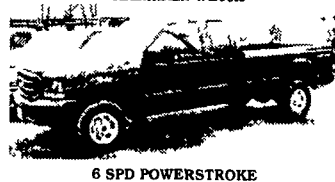
**RARE FIND 99 MITSUBISHI FUSO**  
4WD, Only 7,000 Miles, Turbo Diesel, 5 Spd A/C, 12 Ft Steel Body



**FLATBED DUMP 95 CHEVY W 4 (ISUZU)**  
Turbo Diesel AT, 12 Ft Steel Bed, Tie Down Straps Great Fuel Mileage Easy To Drive



**CLUB CAB UTILITY 97 DODGE 2500 4X4**  
Here's A Rare Find Strong Cummins Diesel AT A/C Only 42,000 Miles Limited Slip Axle, Clean Omaha Box



**4 DOOR F250 99 FORD**  
4 Wheel Drive, Plenty of Room For The Family & Power To Tow, Remaining New Tk Warranty Only 30,000 Miles, Powerstroke, Turbo Diesel AT, A/C Loaded & Nice