

CHEVROLET GMC

Sutliff

GM PARTS

GENUINE GM PARTS FOR ALL GM VEHICLES
800-932-0284

**Free Delivery Routes In
12 Counties In Central PA
Call For Specifics**

**25 PARTS PROFESSIONALS TO SERVE YOU
ENGINES - TRANSMISSIONS
A.C. DELCO - SHEET METAL
ALL IN STOCK AND PRICED RIGHT
IF YOU NEED GM PARTS
WE'VE GOT WHAT YOU NEED**

SUTLIFF GM PARTS

13th & Paxton
Harrisburg, PA



We Want Your Business

A Goodwrench Service Plus Dealer

The Plus means better.

CHEVY TRUCK

OLDS

BUICK

CADILLAC

PONTIAC



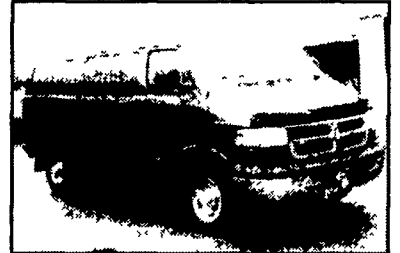
00 Dodge 3500 12 Pass
Maxi Van 360 Auto, PS, PB, PW,
PDL, Dual Air, Tilt, AM/FM/Cass,
Privacy Glass, Black, 24,000 Mi
\$19,500



1999 Dodge 2500 12 Pass
318 Auto, PS, PB, PW, PDL, Cruise,
Tilt, Dual Air, AM/FM/Cass,
Privacy Glass, Full Running Boards,
23,000 Mi, Dark Green
\$16,900



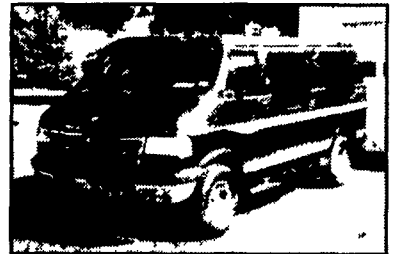
1999 Chevy Express LS
15 Pass 350 Auto, PS, PB, PW,
PDL, Cruise, Tilt, Dual Air,
AM/FM/Cass, Limited Slip Diff
37,000 Mi, Sandstone
\$16,900



00 Dodge 2500 8 Pass
360 Auto, PS, PB, PW, PDL, Cruise,
Tilt, Dual Air, AM/FM/Cass/CD,
4 10 Ratio Limited Slip, Towing
Package, 13,000 Miles with Bal of
Factory Warranty, Like New
\$18,500



1998 Dodge 1500 8 Pass
Short Wheel Base, 3 9 V6, Auto, PS,
PB, PW, PDL, Cruise, Tilt, Air,
AM/FM/Cass, New Michelins,
35,000 1 Owner Miles, Ex Cond.
\$12,900



1996 Dodge 2500 Mark III
Conversion Van 318 Auto, PS, PB,
PW, PDL, Cruise, Tilt, Air,
AM/FM/Cass, 55,000 1 Owner
Miles, Burgundy & Silver, ex cond,
\$10,900

A&J AUTO SALES

798 E. Main St., Rt. 322 East, Ephrata, PA 17522
• 717-733-2873

AL HAMILTON USED TRUCK SALES

PO Box 157 55 Doe Run Road, Manheim PA 17545 • Phone: 717-665-7145 Fax: 717-665-2137 • "CLEANEST TRUCKS AROUND"



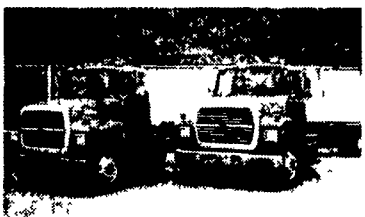
'93 INT 4900 C&C
DT-466, 210HP, 5 Spd Trans, Air
Brakes, A/C, 206 W.B., 138 C.A.
35,000 GVW **\$18,500**



'91 INT. 4600
8' Dump Bed, 7 3L-170 HP,
5 Spd Trans, 2 Spd Rear, Air Brakes,
Pintle Hook, 26,000 GVW **\$18,500**



'95 FORD LNT 8000 C&C
8 3 Cummins 225 HP, 9 Spd Trans, Air
Brakes, A/C, Custom Int, 260 WB, 192
CA, 58 GVW **\$28,500**



(2) '95 FORD LN 8000
8 3L Cummins 210 Hp, 6 Spd Trans,
Custom Int, A/C, Air Brakes, 258 W.B.,
192 C.A., 33,000 GVW **\$19,500 Each**



'91 FORD LN9000
10' Dump, L-10 Cummins, 9 Spd,
Trans, Custom Cab, Air Brakes, Pintle
Hook, 34,700 GVW **\$24,500**



'92 Ford Super Duty XLT C&C
7 3 Diesel, 5 Spd Trans, A/C, 84 C.A.,
14,500 GVW **\$9,500**



'85 Int 2300
10' Dump, L-10 Cummins, 7 Spd Trans,
Air Brakes, A/C, Pintle Hook,
35,000 GVW **\$19,500**



'95 FORD F8000 C&C 8 3 Cummins,
225 HP, 5 Spd. Trans, 2 Spd Rear, Air
Brakes, Custom Int A/C, 214 WB, 144
CA, 33,000 GVW, 17,000 Miles
\$28,500



'94 FORD LNT 9000 C&C
L-10 Cummins 280 HP, 9 Spd Trans,
Air Brakes, A/C, 264 WB, 192" C.A.,
58,000 GVW **\$30,500**



'93 FORD LN8000
C&C, 8 3 Cummins 210 HP, 6 Spd
Trans, Custom Int, A/C, 192 C.A.,
256 W.B., 33,000 G V W **\$18,500**



'94 FORD LN8000
New 10' Dump, 8.3 Cummins 210 HP,
6 Spd. Trans., Air Brakes, Custom Int,
35,000 GVW **\$27,500**



'84 INT. 2300
New 10' Dump, L-10 Cummins, 7 Spd.
Trans, Air Brakes, A/C, 35,000 GVW
\$19,500



'79 INT. 1900
10' Dump, 345 Gas, 5 Spd. Trans., 2 Sp
Rear, Air Brakes, Pintle Hook, 33,000
GVW, Nice Older Truck **\$9,500**



'95 INT. 4900 C&C
DT-466, 210 HP, 6-Spd. Trans, Custom
Int., A/C, 254" W.B., 185 C.A., Air Brakes,
35,000 GVW **\$20,500**



'91 INT 4900
w/New 14' Dump Bed, DT-466, 250HP,
7 Spd Trans, Air Brakes, 58,000 GVW
\$34,500



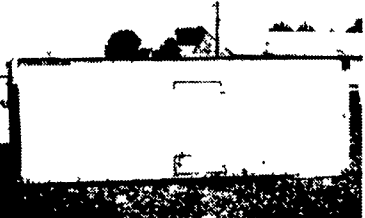
'79 INT. 1800
12' Dump w/New Hoist, DT-466 210 HP,
5 Spd. Trans, 2 Spd Rear, Hyd Brakes,
Pintle Hook, 26,000 GVW
First \$6,500 Takes Her Home



'86 MACK MIDLINER
C&C, 6 Cyl Diesel, 175 HP, 5 Spd Trans,
234" WB, 160" C.A., 26,000 GVW
First \$5,500 Takes Her Home



'85 INT 1900
C&C DT466, 210 HP, 7 Spd Trans, Air
Brakes, 218" WB, 150" C.A., 30,000
GVW First \$8,500 Takes Her Home



USED VAN BODIES
16'-26"
Starting At \$2,000



'93 EAGER BEAVER TRL.
Model 20 Hal,
19' Deck, 86" Wide to 96" Wide
\$10,500