

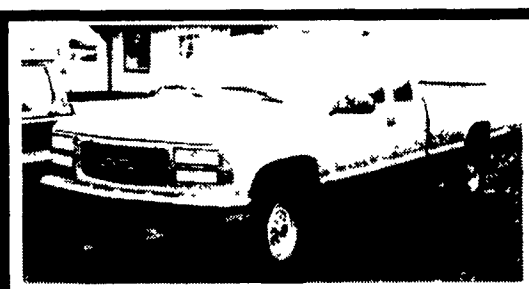
35 TRUCKS AND TRAILERS

'95 GMC SL 1500, 4x4, 4.3 V6, 5 spd, PS, PB, AM/FM, 6,100 GVW, 44,000 miles, \$9,900. 717-733-2873

Goosenk trl, 24ft, newer Dexter Axels 12,000 GVW. \$2800. 610-970-5240



94 FREIGHTLINER FLD 120
400 CAT, JAKE BRAKE, 9 SPD., 232" WHEEL BASE, 70" SLEEPER, AIR RIDE SUSP., 660,000 MILES - \$7,900
717/336-7375



00 GMC SL 2500
Extended Cab, 2WD, 350 FI, 5 Speed, PS, PB, Cruise, Tilt, Air, AM-FM Cass, 8600 GVW, 3.73 Ratio Limited Slip Diff, 6,000 Miles With Bal of Factory Warranty, Pewter, Like New
\$18,500

A&J AUTO SALES

798 E. Main St., Rt. 322 East, Ephrata, PA 17522
• 717-733-2873

- Air Ride Sliding Trailer Tandem, Hendrickson Vantrax off 1999 102" Reefer, Outboard Drums, 10 Hole Hub Pilot, Antilock Brakes, Automatic Slack Adjusters, Excellent Condition **\$2,400**
 - Sliding Trailer Tandem, Off 48x102" Reefer, 4 Spring, Outboard Drums, Automatic Slack Adjusters, 10 Hole Budd, Low Miles, Excellent Condition **\$750**
 - Landing Gear Off 102" Reefer Complete, Very Good Condition **\$200**
 - Freightliner 1997 Aluminum Grill, Fin Bent **\$.50 OBO**
 - Steering Tire (New) Mounted on Dayton Rim, 1000R20 Radial, 16 Ply **\$125**
 - Clark Electric Pallet Jack MO HWP40 4000# 12V with Charger, Very Good Condition **\$750**
 - Trailer Equalizing Hitch, By Pullrite, Fits 1988 And Up Chevrolet Fullsize Trucks, Like New. **\$350 OBO**
 - (2) Trailer Loading Ramps 13'x2' Fiberglass, 1500# Capacity **\$125 Each**
- Please Call Steve @ 800/752-9502, 717/362-8117 Mon.-Fri. 8 AM - 5 PM or 717/362-3678 nights and weekends

Specializing in Quality Built Trailers and Used Trucks



HUFFMAN TRAILER SALES
FRIENDLY, PROFESSIONAL SERVICE

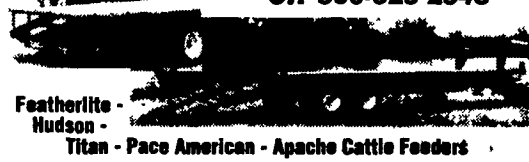
Peanut hulls available by self-unloading trailers

Division of Huffman Litter Service



Rt. 11 NORTH, NEAR EXIT 251 • HARRISONBURG, VA 22802

OFFICE: 540-434-3530 OR 800-825-2545



Featherlite - Hudson - Titan - Pace American - Apache Cattle Feeders

'94 Ford XL F150 super cab, 2WD, 300 EFI, 5 spd, PS, PB, AM-FM cassette w/cap, excellent condition, \$6,700. 717-733-2873

'94 Jeep Cherokee 4 dr., 2WD, 4.0 6 cyl., 5 spd, PS, PB, air, AM-FM cass., dark green, excellent condition, \$4,975. 717-733-2873

1989 Peterbilt 60 series, Detroit, 6" double bunk, 9 speed Fuller trans, air ride, cruise, AC, good rubber, good cond. \$12,500 obo 717-624-4342

1988 Ford F350 10' Eby all alum. stake body, 7.3L dsl, AC, PW, PL, CC, 5spd, \$5500. 717-442-8280

HEAVY TRACTOR

(4) 1994 CH 613 day cab, E7 400, 9 speed, 44,000 lb. rear on camelback fac double frame A.C., 450,000 miles. Wetline, 11x245 tires, dual 90 gal fuel tanks, air ride cab, 124" C.A., tilt-tel wheel
Choice \$24,500
717-733-0724 or 717-626-9050

89 Freightliner FLD120, 350 Cummins, Performance 9 Spd., New Steers, 50% Virgin on Rears, High Miles but Excellent Condition
\$7,000 - 610/683-0497

MOTOR TRUCK EQUIPMENT COMPANY

OPEN 24 HOURS

USED TRUCK SALES
Carlisle
800-692-7324

"WE BUY USED TRUCKS" Call: Tim Mitchell (717) 766-8000

SOLD

1997 MACK CL613 DAYCAB
E7 454HP, Engine Brake, Mack 13 sp., 14,000 lb front axle, 44,000 lb rears, double frame, 283,900 original miles
\$45,900

1995 KW T600
72" AeroCab Flattop, 12 7 Detroit, Jake Brake, RTX15710C, 10 alum. wheels, CLEAN TRUCK
\$24,950

Pickup Truck Rack

- Angle frame - allows you to attach straps anywhere
- 3/4" plate
- Expanded-metal catwalk
- Custom built
- Option-diamond plate side walk

C. K. Manufacturing
99 East White Oak Rd., Paradise, PA 17562 (Between Nickel Mines & Rte. 896)
610-593-7938

Bergey's
AUTOMOTIVE EXCELLENCE SINCE 1924

Dodge Trucks

VISIT OUR EXCLUSIVE DODGE TRUCK SHOWROOM!

CALL TOLL FREE **1-888-855-9061**

ASK FOR ONE OF OUR TRUCK SPECIALISTS! CARL, JIM OR JOE

FIVE STAR BusinessLink

SAVE! • GREAT DEAL! • V8 POWER! • 1-888-855-9061

2001 DODGE RAM 1500 PICKUP V8 POWER
V8 Automatic Anti-Spin Differential Air Cond Alloy Wheels AM/FM Stereo Cassette More! Stk# K3535 Sale Price Includes \$2000 Rebate!
\$16,643

SAVE \$3,741! • MUST SELL! • 1-888-855-9061

2001 DODGE RAM REGULAR CAB PICKUP
V6 Automatic 1500, P-Steering P-Brakes, Air Cond Am-Fm Stereo Cassette MSRP \$18 695 Stk# 3528 Sale Price Includes \$2000 Rebate
\$14,954

SAVE \$4,965! • 1-888-855-9061

2001 DODGE RAM QUAD CAB PICKUP
Stk# K3591 5.2L Magnum V8 Automatic 1500 A/C Alloy Wheels AM/FM Stereo with Cassette And More! MSRP \$23 805 Price Includes \$2 000 Rebate!
\$18,840

SAVE \$5,426 • 1-888-855-9061

2001 DODGE RAM QUAD CAB PICKUP 4X4
Stk# K3617 5.2L Magnum V8 Auto 1500 A/C PL PW, Cr/Tilt Alloy Wheels Cassette & More! MSRP \$28 650 Sale Price Include \$2 000 Rebate!
\$23,224

15 PASSENGER! • 1-888-855-9061

2001 DODGE RAM PASSENGER VAN
Stk# K3618 V8 Auto, 3500, 15-Passenger Dual A/C, PL PW PM, Cr/Tilt AM/FM Stereo Cassette, MSRP \$30,305 Sale Price Includes \$1 000 Rebate!
\$25,833

SAVE \$4,536 • 1-888-855-9061

2001 DODGE RAM WITH STAKE BODY
Stk# K3535 5.9L V8 Auto 3500 12 Stake Body A/C 4 10 Rear Anti Spin Diff MSRP \$28 535 Price Includes \$1 000 Rebate & \$800 Commercial Coupon!
\$23,999

SAVE 5,347! • 1-888-855-9061

2001 DODGE RAM WITH DUMP BODY
Stk# K3587 5.9L Magnum V8 Auto 2-3 Yard Dump Body A/C Anti-Spin More! MSRP \$33 659 Price Includes \$1000 Rebate & \$800 Commercial Coupon
\$28,312

SAVE \$5,413! • WORK SPECIAL

2001 DODGE RAM 2500 HD UTILITY 'DEMO'
Stk# K3078 5.9L V8 Auto Stahl Grand Challenger Utility Body A/C, PS PB MSRP \$27 908 Sale Price Includes \$1,000 & \$800 Commercial Coupon
\$22,495

ALL PRICES INCLUDE FREIGHT DEALER PREP ANY APPLICABLE FACTORY REBATES & FACTORY EQUIPMENT DISCOUNT PKG (IF APPLICABLE) COUPONS AND BERGEY DISCOUNT TAX LICENSE & DOCUMENT FEES COST EXTRA PRIOR DEALS EXCLUDED NOT RESPONSIBLE FOR TYPOGRAPHICAL ERRORS SEE BERGEY'S FOR DETAILS

Bergey's FIVE STAR
AUTOMOTIVE EXCELLENCE SINCE 1924

1201 N. BROAD ST. LANSDALE, PA 19446
Only 1 Mile Off Route 309 in Colmar!

215-855-9061
TOLL FREE 1-888-855-9061

www.bergeys.com
dodgemail@bergeys.com

HOURS: M-F (9A - 9P) SAT (9A - 4P)
Just off Fort Washington Exit 26 of PA Turnpike! Follow Rt. 309 North through Montgomeryville to Colmar Turn left onto N Broad St at Yum-Yum Bakery and just before Colmar Train Station!