

32 MISCELLANEOUS

Large dust/chip collector, panel saw, torflex ez lube axles, new trailers, drill press. 856-232-7686

Radio Tower, 160ft, free stand, \$1000. 717-632-7722
50+ used shopping carts, \$20/ea. 610/594-2147

Wanted: Place to hunt deer or geese within hr. drive of Hershey. Grew up on farm, have 25 yrs safe experience. 717/566-4835 Mark.

WANTED! Honda/CT70S in any condition, even for parts. Will pay cash. 717-397-9688.

Wood heat. Clean, safe and efficient Central Boiler OUTDOOR WOOD FURNACE. Heats multiple buildings. Available in carbon steel & titanium enhanced stainless. Call Kenneth Stauffer 570/539-4606, 888/539-4606.

**BUY,
SELL,
TRADE
OR
RENT
THROUGH
THE
CLASSIFIED
ADS
IN
Lancaster
Farming**

PHONE
717-626-1164

35 TRUCKS AND TRAILERS

1994 FL70 Freightliner, 9-spd w/Cummins motor, w/24' Eby cattle bed w/double deck rail, Will sell separate.

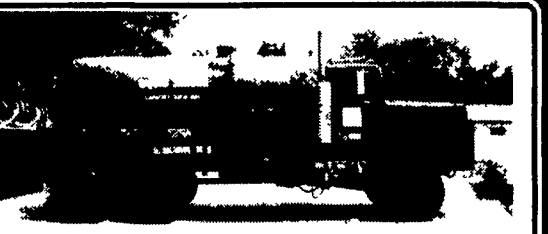
1984 Ford 8000 w/factory rebuilt 3208 Cat engine, 92,000 mi. on rebuild, 10-spd trans. w/20' dump feed box.
570-758-1744



1988 Chevy 2500, 4x4, 3/4 Ton, 350-V8, Auto., 111-K Miles, Plain Work Truck, Body Decent, Runs & Works Great! \$2,600 Cash Steals A Good Truck! Double-D-Auto Sales 717-774-5590, York County



Like New
2001 GMC 3500 SLE 4x4 Ext Cab Duramax Diesel Allison Auto 8,500 Mi, Gooseneck Hitch Pewter \$39,900
2001 Appalachian Trailer 10,000 GVW w/6000 Axles 16" Tires, 16' Deck, 4' Dovetail, 96" Wide \$3,400
717-665-7655

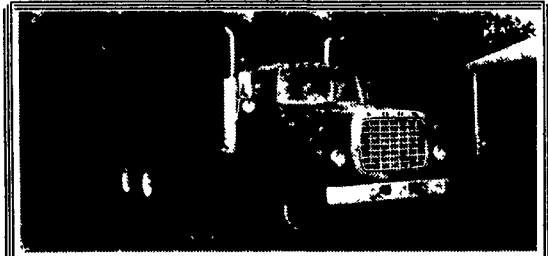


1980 International PS 5000, 6x6, AWD, 3200 Gal., Pres./Vacuum Tanker, 290 Cummins, Diesel, 10-Spd., GVW 64,000 Lbs., Includes New BK-up, PB 8-Vac./Pump.
\$35,000 OBO

717-495-9668 or 747-9614



1993 Chevy Xtra-Cab 4x4, Silverado, 350-V8, Auto, Loaded, 170-K Miles, Paint Fair, Very Good Cond, Runs & Works Great! \$6,500. Cash. Credit Cards or Financing Double-D-Auto's, 717-774-5590 York County



Ford Silage and Dump Truck, 30,000 mi. on rebuilt motor with Jake brake, 90 percent rubber. Too many new parts to mention. **\$22,000 OBO**
(540) 234-9043

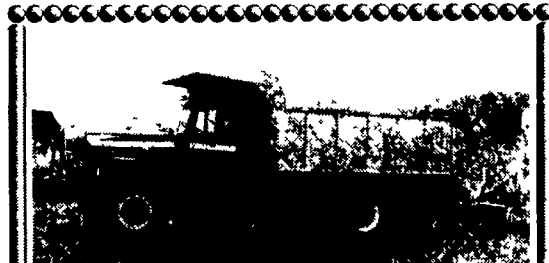


1990 International 4900 4x2 DT466 Engine, 210HP, 5spd-2spd Transmission, Air brakes, PS, AC, 32,900 GVW \$17,900 **717-626-8318**

Pocono Peterbilt Used Truck Department
RTS I-80 & 611 Bartonsville, PA 18321
800-776-2738



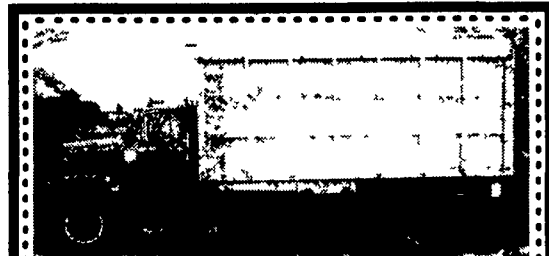
1995 Ford (2) Available
(1) L7000 / 175 HP / 24' Supreme body with lift gate
(1) L8000 / 210 HP / 22' Supreme body with lift gate
\$15,995 Each



'74 Brockway Rebuilt 290 Cummins, w/Jake Brake PS, Rebuilt Walking Beam
\$6,900 • 717/336-7375



1994 CHEVY 3500 1-Ton Pickup with New E-Z Dump Bed, 350-V8, Auto., A/C, Some Dents But Good Cond., Runs and Works 100%!
\$5,995 Takes All!
DOUBLE-D AUTOS
717-774-5590 York County



1979 Chevy Bruin Bulk Feed Truck with three compartments. Very good running condition, good rubber. Approx. 15,000 miles on replaced engine. GVW 35,500#, 15 Ton Hydraulic Lift.
717-243-2233 between 8-5 Mon-Sat



85 Western Star, 315 Cummins, 13 Speed, 46,000 RA, 14,000 FA, 14' Alum. Dump \$17,500
610/383-6818 610/380-3235

35 TRUCKS AND TRAILERS



1984 Cabover Pete, 350 Cat 13 Speed wet line, 11x24.5 Rubber
1995 379 LongHood Pete, 550 Cat 18 Speed Trans, 48" sleeper, air ride, wet line, American Class, 11x24.5 rubber
(717) 733-7226



1985 Freightliner 6V92TA Detroit Dsl, S/A Tractor, New Tires, PS \$4800. **717-776-7725**



(25) 28'x102" Stricks overhead doors, smooth sides
\$1,000 ea.



(15) 28x96 Freuhauf overhead doors, rib sides
\$900 ea.



36' 25 ton lowboy, excellent cond.
\$6,500

(2) 1992 Great Dane, 45', side door, OHRD 11RX 22.5 tires, like new
\$4,500 ea.
(2) 1995 Great Dane, 45' side door, OHRD, 11RX 22.5 tires, like new
\$5,000 ea.



Guest Trailer
3865 Old Harleburg Pike
Mt. Joy, PA
800-729-4900
1-717-898-5863