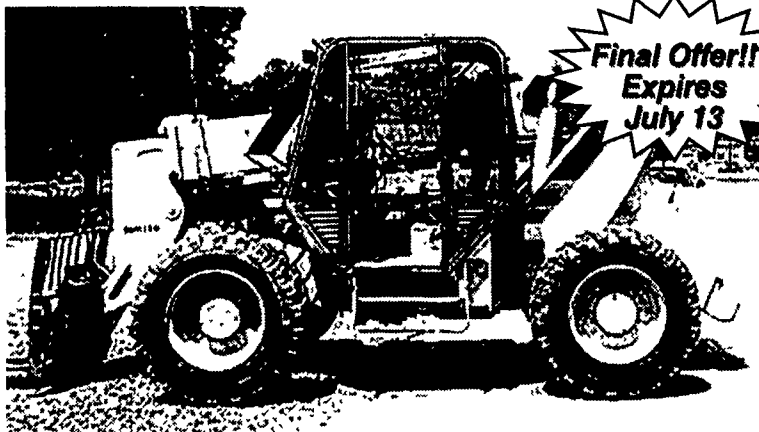


1A CONSTRUCTION EQUIPMENT

Blaw-Knox PF-65 Paver.
Good cond. Will sacrifice
for \$7000 obo. Call
717-233-5773

'86 Ford 655 backhoe,
2WD, cab, heater, 7100
orig hrs, 1-owner, 18" &
24" bkts, \$13,000 obo.
610-287-7894

OFF LEASE JCB LOADALLS
CHOOSE FROM 12 10 9 MACHINES
STARTING AT \$950.00 PER MONTH
FOR 36 MONTHS
1 YEAR WARRANTY AVAILABLE



Final Offer!!
Expires
July 13

6000 Lb. Capacity, 36' Lift Height
Available Options; Cab, Side Tilt Carriage Bucket

POWER PRO EQUIPMENT

WEB: powerproequipment.com

E-MAIL: powerpro@epix.net

CALL 1-800-832-2228

Ask For Paul Irvin or Earl Martin

Terms Subject to Credit Approval

Equipment

CHALK

Sales -150 Forklifts
In Stock



410-686-6800
BALTIMORE, MD

3

**SILOS
AND
UNLOADERS**

12x65 Terre Hill silo, good
cond., includes Jamesway
ring drive unloader, best
offer. 717/529-2831

Starline SS blower \$190.
Starline ring \$120. 18"
Starline auger \$140.
717-656-2615.

**Rebuilt Patz
98B silo
unloaders,
12-30 ft.**

Used, dropped and
worn out ones
taken in trade
Will install and/or
Deliver Anywhere
Call 716/532-2919
If no answer, leave
a message.

20x70 & 20x40 Cropstore
silos w/unloaders.
610-932-8999

Patz gutter cleaner, 18"
w/sunk pump, chain &
chute replaced recently,
\$4500. Patz 98B silo un-
loader, motor included,
\$4500. 716-595-3210



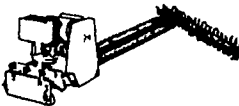
**BAKER'S
UNLOADER
SERVICE**
Lee Baker

717-834-3471

• Authorized Quality
Stahl Mfg., Inc.

Parts Dealer

• DO YOU MISS THOSE
GOOD OLD THOSE
WHEN YOUR
GOLIATH® UNLOADER
WAS NEW???



• CALL NOW AND SEE
HOW AFFORDABLE
IT IS TO HAVE YOUR
UNLOADER REBUILT
WITH STAHL
MFG. PARTS.

Not affiliated with A O Smith
Harvestore Products Inc

16' Jamesway Ring Drive
Unloader, v.g. cond.
\$1,900. Lebanon Co. PA
717-866-1888.

Van Dale Magnum silo
unloader, fits 12' to 14'
silos, 10 yrs old, vg cond,
\$2500. 410-756-6027

**RELINE SILOS WITH
SHOTCRETE**

Tear Down/Rebuild Silos • All Kinds of Silo Work
Manure Pits & Walls • Also Concrete Pumping

610/273-9211

S & N Pumping

2440 Beaver Dam Road
Honey Brook, PA 19344

REPLACEMENT SILO DOORS

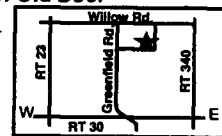
Many Kinds In Stock Silo Door Hardware

- Marietta
- Fickes
- Madison
- Terre Hill
- Lancaster
- Ribstone
- Butterfly Hinges
- Latches
- Steps
- Ladders

Silo Doors Made To Order
Bring Pattern Of Old Door

SAMUEL S. ZOOK

534 Willow Rd.
Lancaster, PA 17601
Only Farm On Greenfield Rd.
717-291-9579 8-8:15 AM



Zimmerman's

Harvestore® Repair

Oakland Mills, PA
717-463-9731

Specializing
Used Silos & New Tanks
Link Belt & Rexnord Chains

2 1/2 Yr. Warranty **Farm Plan**
A Service of FPC Financial

- * Demuth Goosenecks and Blower Pipe
- * Epoxy & Steel Replacement Floors
- * Complete Rebuilt Goliath and Hercules Unloaders
- * Replacement Roof for Harvestores®
- * AFS Hammermills and Augers
- * Rissler Spiro Mixers

Inventory

- | | |
|-------------------------|---------------------------|
| Used Harvestores | Used Slurrystores |
| (1) - 25x90 | (1) - 81x25 |
| (1) - 25x60 | (1) - 62x20 |
| (1) - 20x70 | (1) - 42x20 |
| (1) - 20x40 | (1) - 18" Harvestore Pump |
| (1) - 20x50 | Used Aqua-Stores |
| | (2) - 70x15 |

Used Unloaders & Equip.

- (1) - 20' Brg Jim
- (1) - A O. Smith Automatic Feeder
- (1) Corn Silage Roller Mill

TELMARK Leasing Available
www.telmark.com

MARTIN'S SILO REPAIR

Moving Concrete Stave Silos

- Gunite Relining
- Roofs
- Fill Pipes
- Replacement Doors
- Distributors
- General Repair

907 Centerville Rd.
New Holland, PA 17557
(717) 445-9834

DENLINGER AG SEED WAREHOUSE

★ SPECIAL PRICING ★

| | |
|----------------------------|-----------------------------|
| Sun Film Bale Wrap | Poly Twines |
| 20" \$45.25 /roll | Single Ball 20,000' \$11.45 |
| 30" \$54.75/roll | Double Ball 20,000' \$14.10 |
| Fabpro Bale Netwrap | Sisal Twines |
| 48"x9,840' | 9 & 10,000' \$16.65 |
| \$219.50/roll | 7,200' \$16.25 |
| | 16,000' \$18.65 |

Christiana, PA
610-593-3420 Toll Free 888-262-0411

**MAY-CO PLASTIC
SILO LINERS**

We are making a pleated liner with the
original white plastic to reduce the
stretching that takes place with grass silage.
Order early to guarantee delivery on time.

SHOP (717) 399-8232
MAY-CO SUPPLY CO., INC.
551 Cobblestone Lane, Lancaster PA 17601

**Concrete Stave
Silos**

Checked Tops
Available In
Choice of Colors
3 Popular Brands of
Door Frames and Silo
Staves Available For
Your Extension and
Repair Jobs

**Nickel Mine
Silo**

Home Of The
Checked Top Silo

406 E. White Oak Rd
Christiana PA 17509

For New Silos and
Silo Service Call
610-273-3993

For Silo Staves and
Door Frames Call
610-593-1172

100% Financing w/Good Credit at 9% Int. in PA



1994 217 JCB 4x4, cab & ext.
hoe, 36 & 24 in bucket, 3400 hr.....
\$26,500



1986 Cat 953, Good bottom, LGP, with
Root Rake.....\$37,000



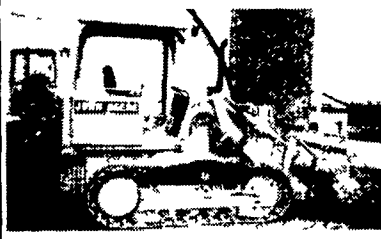
Case 1150 Crawler Loader, 2900
Original hr.....\$16,500

Cat 966D Wheel Loader,
Nice, Good Rubber, New Paint
\$41,000

1988 Komatsu WA120,
New Paint, Good Rubber
\$26,000



Cat E120 Hydraulic Ex. 1989 New
Paint, Nice.....\$24,000



95 JD 455G, 2200 Hrs.,
Extra Clean.....\$31,500



Gehl 5625 Skid Loader.....\$5,900



89 JD 644E, Radial Tires,
New Paint.....Call

1989 JD 510C 4x4, Cab, Ext.
hoe, 3700 hr.....\$24,500
1987 Case 780C TLB 4x4, Cab,
Cummins Diesel with turbo
\$17,500

1989 Ford **SOLD** hoe w/Cab,
Nice \$16,500

Cat 953 w/Cab, Good Engine &
Bottom, Lots of Rust.....\$26,000
312 Hydraulic Excavator
.....\$33,000

CRAWLER LOADER
95 JD 455G Crawler Loader,
2200 Hrs, New Paint. \$32,500

WHEEL LOADERS
Volvo Michigan L190, 6 yd
Bucket. \$34,000

AA Equipment

717/529-2512
No Sunday Calls

1797 Robert Fulton Hwy., Quarryville, PA 17566
• We Buy & Sell • Financing Available

Better Bilt Storage, Inc.

Sugarcreek, Ohio

330-852-4088

In Business 26 Years!

**Call us Now to order your
next Used Harvestore®
For Haylage, Cornlage, or
Hi-Moisture Corn.**

All structures include New Rebuild
Kits, and NEW or Completely Rebuilt
Unloaders - All Guaranteed.

Inventory In Stock!

- | | |
|----------------|-------------------------|
| 1-62x23 Slurry | 1-20x80 - 30" wide Unl. |
| 1-20x70 | 1-20x90 - 30" wide Unl. |
| 1-20x60 | 1-20x50 w/New PS Auger |
| 1-14x40 - 1981 | 1-25x80 - 1981 |

Rexnord - 20' cutter chain..... \$835
20' conveyor chain..... \$835

Check with us -
You'll be glad you did!

"Used Harvestores® is our Business Since 1975"